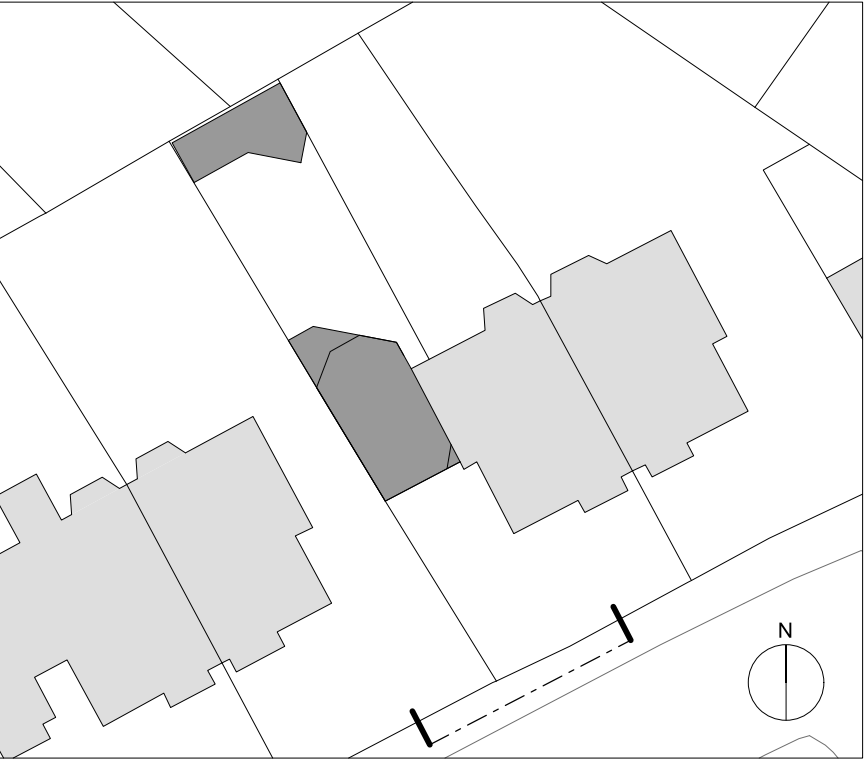




01 - LYNDHURST ROAD ELEVATION



Notes

- CONTEXT:
- 01. Entrance to 9 Lyndhurst Road front garden
 - 02. Entrance to 10 Lyndhurst Road front garden
 - 03. Stair to 10A Lyndhurst Road, basement flat
 - 04. Tiled stair to 10B-D Lyndhurst Road
 - 05. 10A-D Lyndhurst bin store
 - 06. Painted brick wall and railing to basement flat stair
 - 07. Stair to 9 Lyndhurst Road basement flat
 - 08. Stair to 9 Lyndhurst Road GF, FF, SF flats
 - 09. 9 Lyndhurst side passage railing and gate
 - 10. Windows to 9 Lyndhurst basement flat
 - 11. Manhole 1
 - 12. Manhole 2
 - 13. Manhole 3
 - 14. Brick wall to the pavement
 - 15. Bathroom to 10B Lyndhurst Road
 - 16. Bathroom window to 10B Lyndhurst Road
 - 17. Front brick vaults below the garden
 - 18. Rear vault below the garden
 - 19. London yellow stock brick
 - 20. Brick window lintels
 - 21. Brick corbel detailing
 - 22. White painted timber sash windows
 - 23. Slate roof
 - 24. White render
 - 25. White painted decorative detail
 - 26. Neighbouring gas supply
 - 27. Downpipes
 - 28. White painted window cills
 - 29. White painted window lintels
 - 30. Decorative tile band
 - 31. Painted timber front door with glazed fanlight
 - 32. Neighbouring tree

- PROPOSED:
- 100. Entrance to The Cottage, 10 Lyndhurst Road
 - 101. Garden path
 - 102. Bin store with sedum roof
 - 103. Garden studio
 - 104. New lawn
 - 105. Raised planter
 - 106. Planting beds
 - 107. Existing tree retained
 - 108. Paved garden terrace
 - 109. Basement courtyard
 - 110. Retained and refurbished brick boundary wall
 - 111. Entrance porch with niche
 - 112. Front door
 - 113. Triple glazed windows
 - 114. Triple glazed rooflights
 - 115. Garden studio door
 - 116. Flat roof
 - 117. Standing seam metal roof
 - 118. Stone façade
 - 119. Stone lintels and cills
 - 120. Stone coping
 - 121. Gutter
 - 122. Aluminium hopper and downpipes
 - 123. Air Source Heat Pump (ASHP) with acoustic enclosure
 - 124. New bathroom window to 10B Lyndhurst Road
 - 125. New brick boundary wall
 - 126. Metal balustrade
 - 127. New brick work to match existing
 - 128. New tree
 - 129. Water butt
 - 130. Garden tool store
 - 131. New low level brick wall

P00 13 02 24 Planning Issue

revision date amendment

MARY DUGGAN

Royle Studios, Unit 2, 23-41 Wenlock Road, London, N1 7SG +44(0)20 3327 0990
marydugganarchitects.com

DRAWING NOT FOR CONSTRUCTION. Any discrepancies to be reported to MD immediately. All areas provided are intended for illustrative purposes only. MD advise that the validity of all quantities and numbers be subject to a detailed check, audit and sign off by an RICS chartered surveyor. MD do not accept any liability for decisions or actions derived from interpretation, extrapolation or use of the areas information shown. Measurements have been calculated in accordance with the UK Government Code of Measuring Practice: Definitions for Rating Purposes. © Mary Duggan Architects 2023

LYNDHURST ROAD

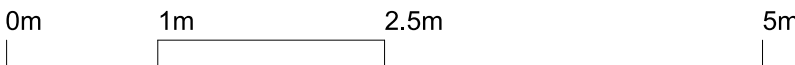
Title PROPOSED ELEVATION - LYNDHURST ROAD

Status FOR PLANNING

Scale 1:50 @A1 / 1:100 @A3

job no source zone element drawing no. revision

MD141 A - (01) 200 P00





01 - FRONT ELEVATION



02 - REAR ELEVATION



Notes

- CONTEXT:
01. Entrance to 9 Lyndhurst Road front garden
 02. Entrance to 10 Lyndhurst Road front garden
 03. Stair to 10A Lyndhurst Road, basement flat
 04. Tiled stair to 10B-D Lyndhurst Road
 05. 10A-D Lyndhurst bin store
 06. Painted brick wall and railing to basement flat stair
 07. Stair to 9 Lyndhurst Road basement flat
 08. Stair to 9 Lyndhurst Road GF, FF, SF flats
 09. 9 Lyndhurst side passage railing and gate
 10. Windows to 9 Lyndhurst basement flat
 11. Manhole 1
 12. Manhole 2
 13. Manhole 3
 14. Brick wall to the pavement
 15. Bathroom to 10B Lyndhurst Road
 16. Bathroom window to 10B Lyndhurst Road
 17. Front brick vaults below the garden
 18. Rear vault below the garden
 19. London yellow stock brick
 20. Brick window lintels
 21. Brick corbel detailing
 22. White painted timber sash windows
 23. Slate roof
 24. White render
 25. White painted decorative detail
 26. Neighbouring gas supply
 27. Downpipes
 28. White painted window cills
 29. White painted window lintels
 30. Decorative tile band
 31. Painted timber front door with glazed fanlight
 32. Neighbouring tree

- PROPOSED:
100. Entrance to The Cottage, 10 Lyndhurst Road
 101. Garden path
 102. Bin store with sedum roof
 103. Garden studio
 104. New lawn
 105. Raised planter
 106. Planting beds
 107. Existing tree retained
 108. Paved garden terrace
 109. Basement courtyard
 110. Retained and refurbished brick boundary wall
 111. Entrance porch with niche
 112. Front door
 113. Triple glazed windows
 114. Triple glazed rooflights
 115. Garden studio door
 116. Flat roof
 117. Standing seam metal roof
 118. Stone façade
 119. Stone lintels and cills
 120. Stone coping
 121. Gutter
 122. Aluminium hopper and downpipes
 123. Air Source Heat Pump (ASHP) with acoustic enclosure
 124. New bathroom window to 10B Lyndhurst Road
 125. New brick boundary wall
 126. Metal balustrade
 127. New brick work to match existing
 128. New tree
 129. Water butt
 130. Garden tool store
 131. New low level brick wall

P00 13 02 24 Planning Issue

revision date amendment

MARY DUGGAN

Royle Studios, Unit 2, 23-41 Wenlock Road, London, N1 7SG +44(0)20 3327 0990
marydugganarchitects.com

DRAWING NOT FOR CONSTRUCTION. Any discrepancies to be reported to MD immediately. All areas provided are intended for illustrative purposes only. MD advise that the validity of all quantities and numbers be subject to a detailed check, audit and sign off by an RICS chartered surveyor. MD do not accept any liability for decisions or actions derived from interpretation, extrapolation or use of the areas information shown. Measurements have been calculated in accordance with the UK Government Code of Measuring Practice: Definitions for Rating Purposes. © Mary Duggan Architects 2023

LYNDHURST ROAD

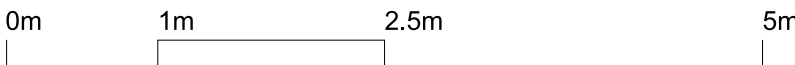
Title PROPOSED ELEVATIONS - FRONT & REAR

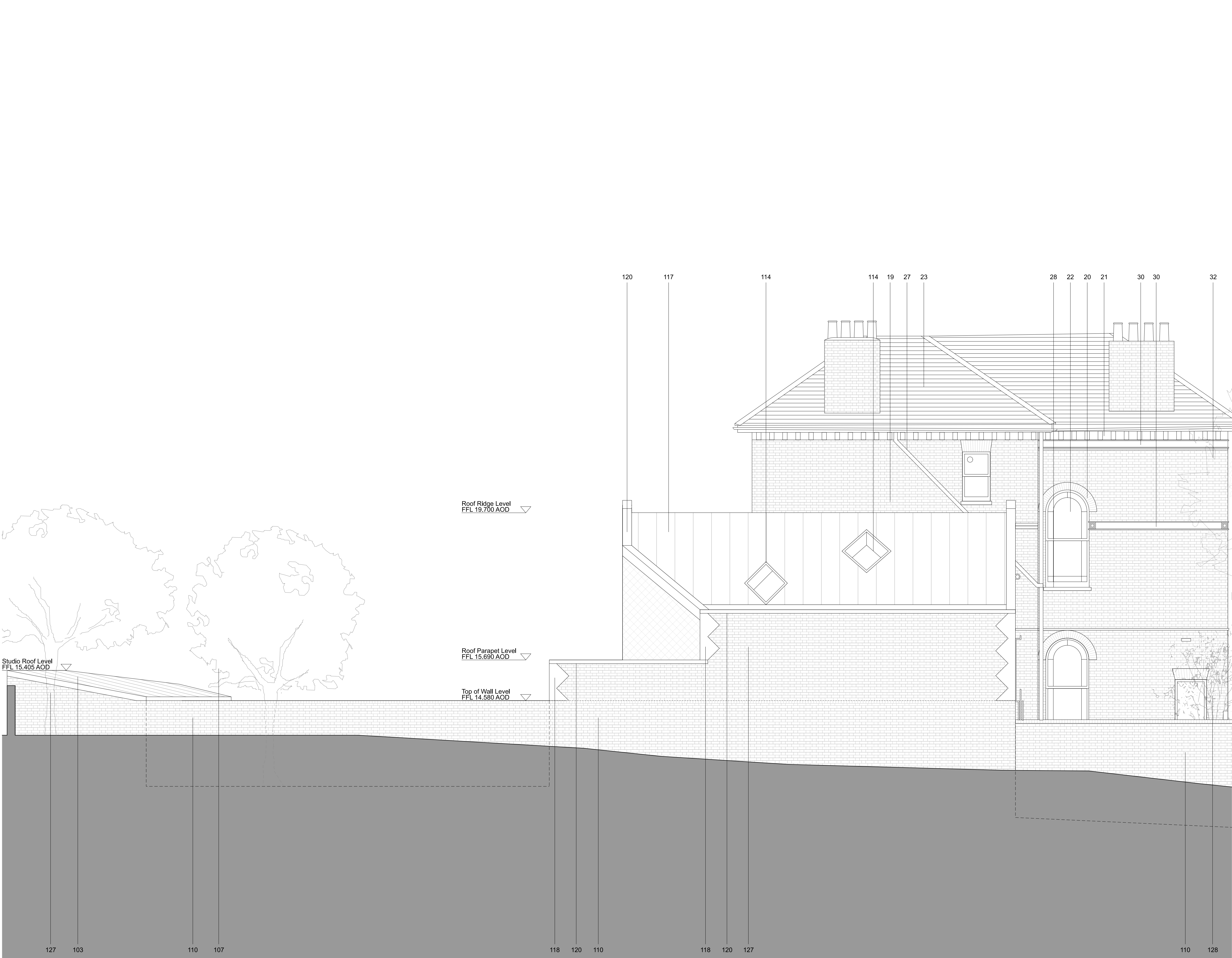
Status FOR PLANNING

Scale 1:50 @A1 / 1:100 @A3

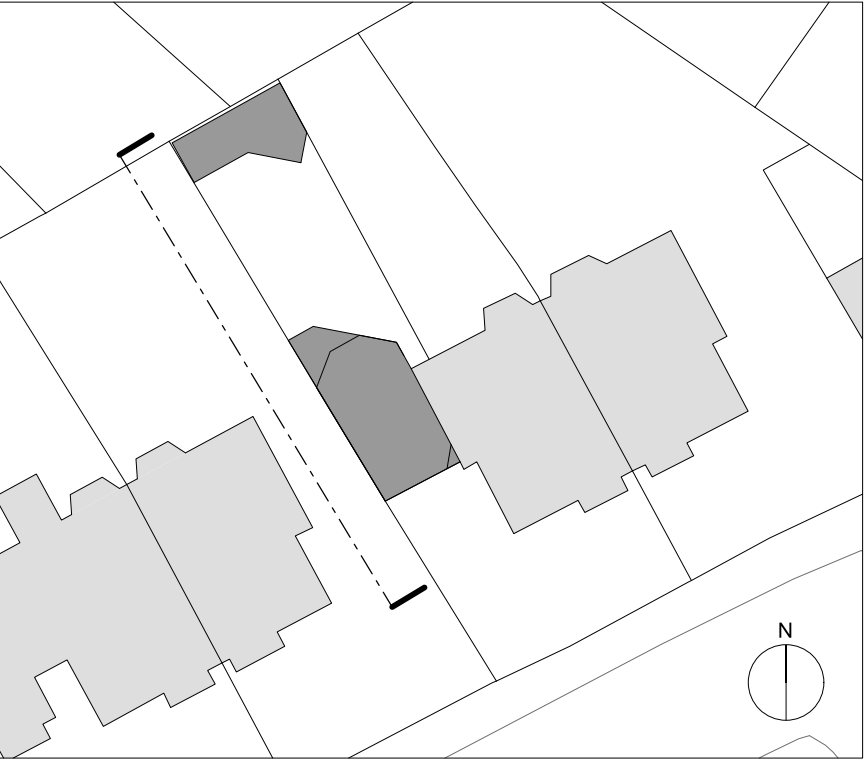
job no source zone element drawing no. revision

MD141 A - (01) 201 P00





01 - SIDE ELEVATION - 9 Lyndhurst Road



Notes

- CONTEXT:
- 01. Entrance to 9 Lyndhurst Road front garden
 - 02. Entrance to 10 Lyndhurst Road front garden
 - 03. Stair to 10A Lyndhurst Road, basement flat
 - 04. Tiled stair to 10B-D Lyndhurst Road
 - 05. 10A-D Lyndhurst bin store
 - 06. Painted brick wall and railing to basement flat stair
 - 07. Stair to 9 Lyndhurst Road basement flat
 - 08. Stair to 9 Lyndhurst Road GF, FF, SF flats
 - 09. 9 Lyndhurst side passage railing and gate
 - 10. Windows to 9 Lyndhurst basement flat
 - 11. Manhole 1
 - 12. Manhole 2
 - 13. Manhole 3
 - 14. Brick wall to the pavement
 - 15. Bathroom to 10B Lyndhurst Road
 - 16. Bathroom window to 10B Lyndhurst Road
 - 17. Front brick vaults below the garden
 - 18. Rear vault below the garden
 - 19. London yellow stock brick
 - 20. Brick window lintels
 - 21. Brick corbel detailing
 - 22. White painted timber sash windows
 - 23. Slate roof
 - 24. White render
 - 25. White painted decorative detail
 - 26. Neighbouring gas supply
 - 27. Downpipes
 - 28. White painted window cills
 - 29. White painted window lintels
 - 30. Decorative tile band
 - 31. Painted timber front door with glazed fanlight
 - 32. Neighbouring tree

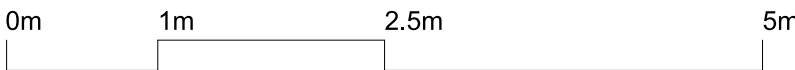
- PROPOSED:
- 100. Entrance to The Cottage, 10 Lyndhurst Road
 - 101. Garden path
 - 102. Bin store with sedum roof
 - 103. Garden studio
 - 104. New lawn
 - 105. Raised planter
 - 106. Planting beds
 - 107. Existing tree retained
 - 108. Paved garden terrace
 - 109. Basement courtyard
 - 110. Retained and refurbished brick boundary wall
 - 111. Entrance porch with niche
 - 112. Front door
 - 113. Triple glazed windows
 - 114. Triple glazed rooflights
 - 115. Garden studio door
 - 116. Flat roof
 - 117. Standing seam metal roof
 - 118. Stone façade
 - 119. Stone lintels and cills
 - 120. Stone coping
 - 121. Gutter
 - 122. Aluminium hopper and downpipes
 - 123. Air Source Heat Pump (ASHP) with acoustic enclosure
 - 124. New bathroom window to 10B Lyndhurst Road
 - 125. New brick boundary wall
 - 126. Metal balustrade
 - 127. New brick work to match existing
 - 128. New tree
 - 129. Water butt
 - 130. Garden tool store
 - 131. New low level brick wall

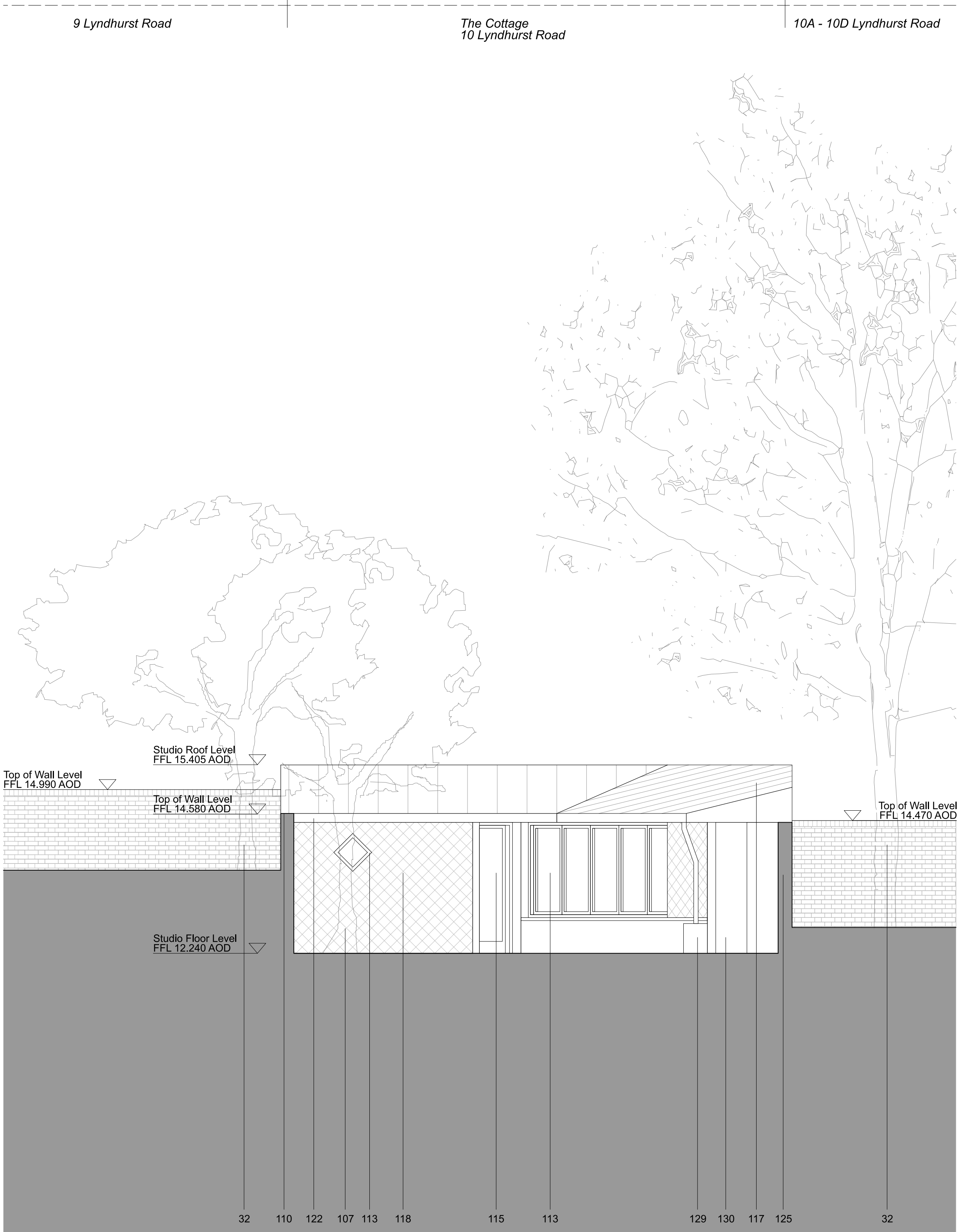
P00	13 02 24	Planning Issue
revision	date	amendment

MARY DUGGAN
Royle Studios, Unit 2, 23-41 Wenlock Road, London, N1 7SG +44(0)20 3327 0990
marydugganarchitects.com

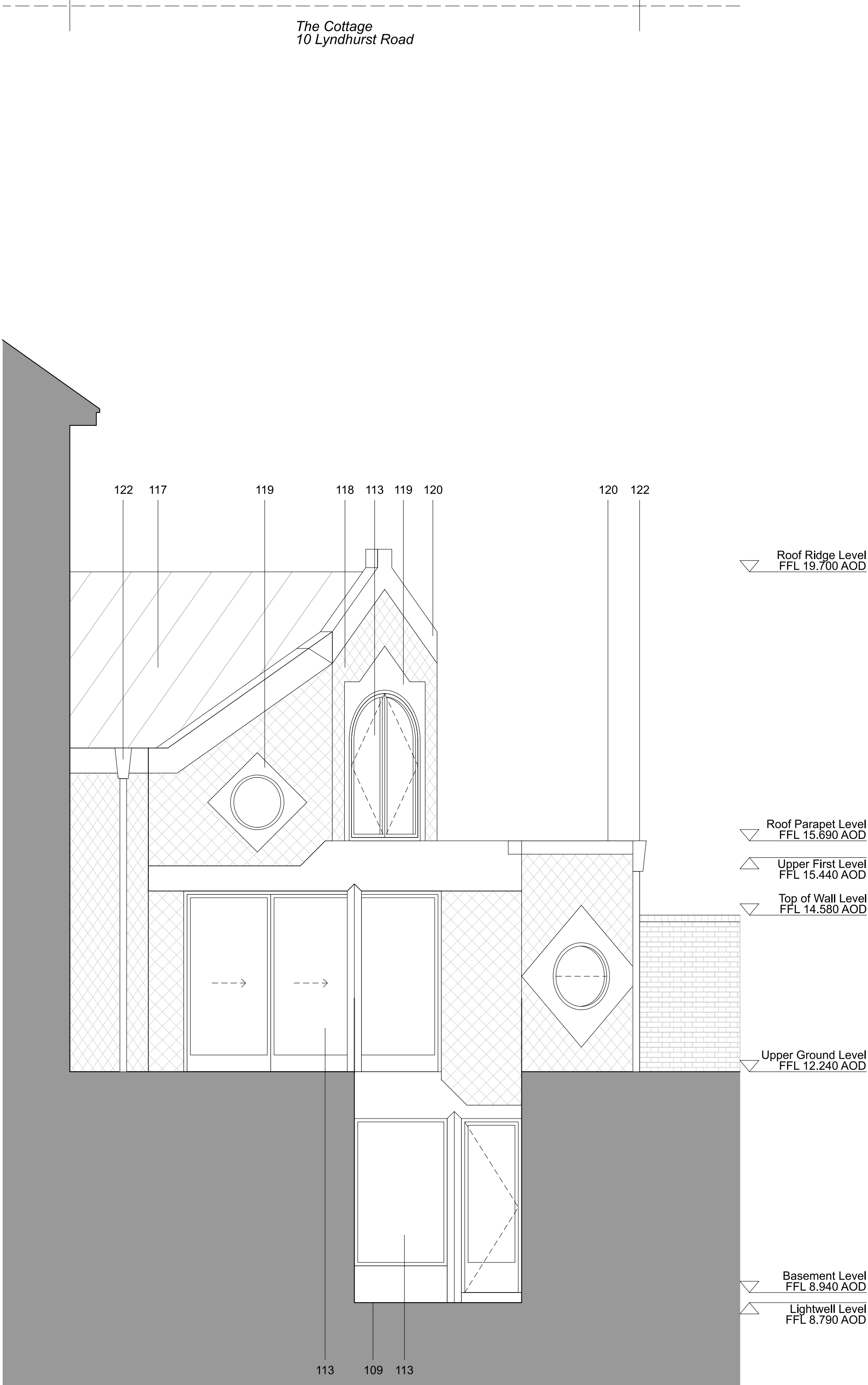
DRAWING NOT FOR CONSTRUCTION. Any discrepancies to be reported to MD immediately. All areas provided are intended for illustrative purposes only. MD advise that the validity of all quantities and numbers be subject to a detailed check, audit and sign off by an RICS chartered surveyor. MD do not accept any liability for decisions or actions derived from interpretation, extrapolation or use of the areas information shown. Measurements have been calculated in accordance with the UK Government Code of Measuring Practice: Definitions for Rating Purposes. © Mary Duggan Architects 2023

LYNDHURST ROAD					
Title	PROPOSED ELEVATION - SIDE				
Status	FOR PLANNING				
Scale	1:50 @A1 / 1:100 @A3				
job no	source	zone	element	drawing no.	revision
MD141	A	-	(01)	202	P00





01 - GARDEN STUDIO ELEVATION



02 - REAR ELEVATION OBLIQUE VIEW



Notes

- CONTEXT:
- 01. Entrance to 9 Lyndhurst Road front garden
 - 02. Entrance to 10 Lyndhurst Road front garden
 - 03. Stair to 10A Lyndhurst Road, basement flat
 - 04. Tiled stair to 10B-D Lyndhurst Road
 - 05. 10A-D Lyndhurst bin store
 - 06. Painted brick wall and railing to basement flat stair
 - 07. Stair to 9 Lyndhurst Road basement flat
 - 08. Stair to 9 Lyndhurst Road GF, FF, SF flats
 - 09. 9 Lyndhurst side passage railing and gate
 - 10. Windows to 9 Lyndhurst basement flat
 - 11. Manhole 1
 - 12. Manhole 2
 - 13. Manhole 3
 - 14. Brick wall to the pavement
 - 15. Bathroom window to 10B Lyndhurst Road
 - 16. Bathroom window to 10B Lyndhurst Road
 - 17. Front brick vaults below the garden
 - 18. Rear vault below the garden
 - 19. London yellow stock brick
 - 20. Brick window lintels
 - 21. Brick corbel detailing
 - 22. White painted timber sash windows
 - 23. Slate roof
 - 24. White render
 - 25. White painted decorative detail
 - 26. Neighbouring gas supply
 - 27. Downpipes
 - 28. White painted window cills
 - 29. White painted window lintels
 - 30. Decorative tile band
 - 31. Painted timber front door with glazed fanlight
 - 32. Neighbouring tree

- PROPOSED:
- 100. Entrance to The Cottage, 10 Lyndhurst Road
 - 101. Garden path
 - 102. Bin store with sedum roof
 - 103. Garden studio
 - 104. New lawn
 - 105. Raised planter
 - 106. Planting beds
 - 107. Existing tree retained
 - 108. Paved garden terrace
 - 109. Basement courtyard
 - 110. Retained and refurbished brick boundary wall
 - 111. Entrance porch with niche
 - 112. Front door
 - 113. Triple glazed windows
 - 114. Triple glazed rooflights
 - 115. Garden studio door
 - 116. Flat roof
 - 117. Standing seam metal roof
 - 118. Stone façade
 - 119. Stone lintels and cills
 - 120. Stone coping
 - 121. Gutter
 - 122. Aluminium hopper and downpipes
 - 123. Air Source Heat Pump (ASHP) with acoustic enclosure
 - 124. New bathroom window to 10B Lyndhurst Road
 - 125. New brick boundary wall
 - 126. Metal balustrade
 - 127. New brick work to match existing
 - 128. New tree
 - 129. Water butt
 - 130. Garden tool store
 - 131. New low level brick wall

P00	13 02 24	Planning Issue
revision	date	amendment

MARY DUGGAN

Royle Studios, Unit 2, 23-41 Wenlock Road, London, N1 7SG +44(0)20 3327 0990
marydugganarchitects.com

DRAWING NOT FOR CONSTRUCTION. Any discrepancies to be reported to MD immediately. All areas provided are intended for illustrative purposes only. MD advise that the validity of all quantities and numbers be subject to a detailed check, audit and sign off by an RICS chartered surveyor. MD do not accept any liability for decisions or actions derived from interpretation, extrapolation or use of the areas information shown. Measurements have been calculated in accordance with the UK Government Code of Measuring Practice; Definitions for Rating Purposes. © Mary Duggan Architects 2023

LYNDHURST ROAD

Title	PROPOSED ELEVATION - GARDEN & REAR				
Status	FOR PLANNING				
Scale	1:50 @A1 / 1:100 @A3				

job no	source	zone	element	drawing no.	revision
MD141	A	-	(01)	203	P00

