

MICROCLIMATE STUDY

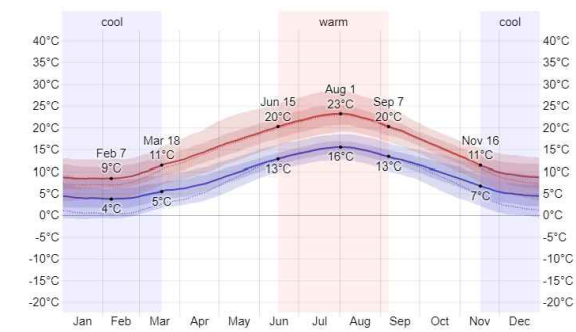
Average Weather in London, United Kingdom

In London, the summers are short, comfortable, and partly cloudy and the winters are long, very cold, windy, and mostly cloudy. Over the course of the year, the temperature typically varies from 4°C to 23°C and is rarely below -1°C or above 29°C.

Temperature

The warm season lasts for 2.8 months, with an average daily high temperature above 20°C. The cool season lasts for 4.0 months, with an average daily high temperature below 11°C. The coldest month of the year in London is February, with an average low of 4°C and high of 9°C.

Average High and Low Temperature



The daily average high (red line) and low (blue line) temperature, with 25th to 75th and 10th to 90th percentile bands. The thin dotted lines are the corresponding average perceived temperatures.

Sun

The length of the day in London varies extremely over the course of the year. In 2021, the shortest day is December 21, with 7 hours, 50 minutes of daylight; the longest day is June 21, with 16 hours, 39 minutes of daylight.

Hours of Daylight and Twilight

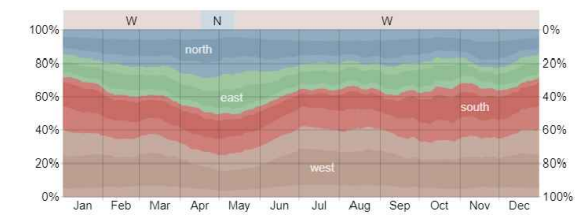


The number of hours during which the Sun is visible (black line). From bottom (most yellow) to top (most gray), the color bands indicate: full daylight, twilight (civil, nautical, and astronomical), and full night.

Wind Direction

The predominant average hourly wind direction in London varies throughout the year. The wind is most often from the west for 11 months.

Wind Direction

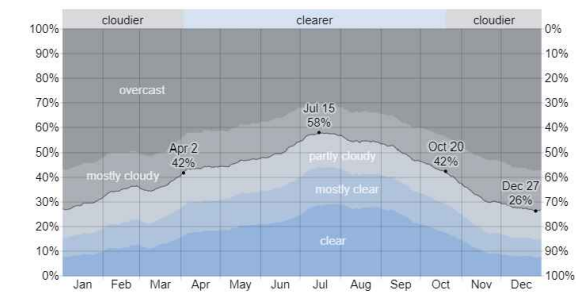


The percentage of hours in which the mean wind direction is from each of the four cardinal wind directions, excluding hours in which the mean wind speed is less than 0.4 m/s. The lightly tinted areas at the boundaries are the percentage of hours spent in the implied intermediate directions (northeast, southeast, southwest, and northwest).

Clouds

In London, the average percentage of the sky covered by clouds experiences significant seasonal variation over the course of the year. The clearer part of the year in London begins around April and lasts for 6.5 months. The clearest month of the year in London is July, during which on average the sky is clear, mostly clear, or partly cloudy 57% of the time. The cloudier part of the year begins around October and lasts for 5.4 months. The cloudiest month of the year in London is December, during which on average the sky is overcast or mostly cloudy 72% of the time.

Cloud Cover Categories

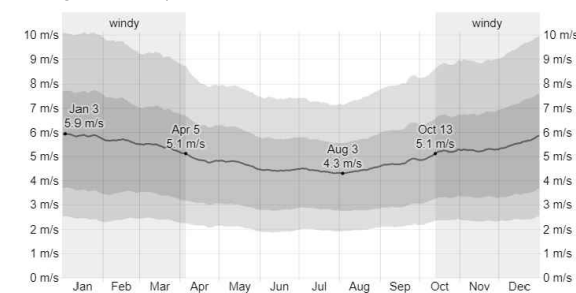


The percentage of time spent in each cloud cover band, categorized by the percentage of the sky covered by clouds.

Wind

The average hourly wind speed in London experiences significant seasonal variation over the course of the year. The windier part of the year lasts for 5.8 months, with average wind speeds of more than 5.1 m/s. The calmer time of year lasts for 6.2 months. The calmest month of the year in London is July, with an average hourly wind speed of 4.4 m/s.

Average Wind Speed

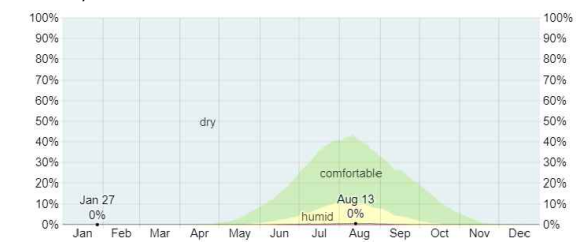


The average of mean hourly wind speeds (dark gray line), with 25th to 75th and 10th to 90th percentile bands.

Humidity

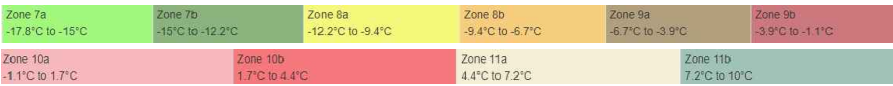
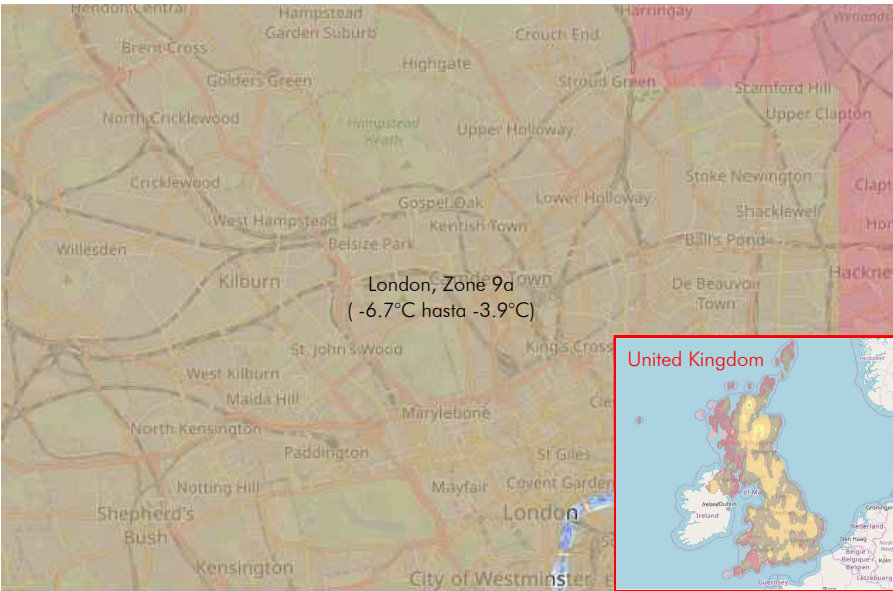
The perceived humidity level in London, as measured by the percentage of time in which the humidity comfort level is muggy, oppressive, or miserable, does not vary significantly over the course of the year, remaining a virtually constant 0% throughout.

Humidity Comfort Levels



The percentage of time spent at various humidity comfort levels, categorized by dew point.

PLANT HARDINESS ZONE MAP



Hardiness Zone of London, United Kingdom

A "Hardiness Zone" is a geographically defined area in which a specific category of plant life is capable of growing, as defined by climatic conditions, including its ability to withstand the minimum temperatures of the zone (table down). For example, a plant that is described as "hardy to zone 9a" means that the plant can withstand a minimum temperature between -6.7 °C and -3.9 °C.

Hardiness Zones

Hardiness Zone	Desde	Hasta
0 a	< -53.9 °C	
0 b	-53.9 °C	-51.1 °C
1 a	-51.1 °C	-48.3 °C
1 b	-48.3 °C	-45.6 °C
2 a	-45.6 °C	-42.8 °C
2 b	-42.8 °C	-40 °C
3 a	-40 °C	-37.2 °C
3 b	-37.2 °C	-34.4 °C
4 a	-34.4 °C	-31.7 °C
4 b	-31.7 °C	-28.9 °C
5 a	-28.9 °C	-26.1 °C
5 b	-26.1 °C	-23.3 °C
6 a	-23.3 °C	-20.6 °C
6 b	-20.6 °C	-17.8 °C
7 a	-17.8 °C	-15 °C
7 b	-15 °C	-12.2 °C
8 a	-12.2 °C	-9.4 °C
8 b	-9.4 °C	-6.7 °C
9 a	-6.7 °C	-3.9 °C
9 b	-3.9 °C	-1.1 °C
10 a	-1.1 °C	+1.7 °C
10 b	+1.7 °C	+4.4 °C
11 a	+4.4 °C	+7.2 °C
11 b	+7.2 °C	+10 °C
12 a	+10 °C	+12.8 °C
12 b	> +12.8 °C	

<div>CONSULTOR</div> <div></div> <div>INSTALLER</div> <div></div>	PROJECT		Vertical Garden in The Hall School	
	DRAWING		PLANTING DESIGN	
CODE	INT 24007	DRAWING NUMBER	10.01 V1	24-01-2024
				S-A3 No scale