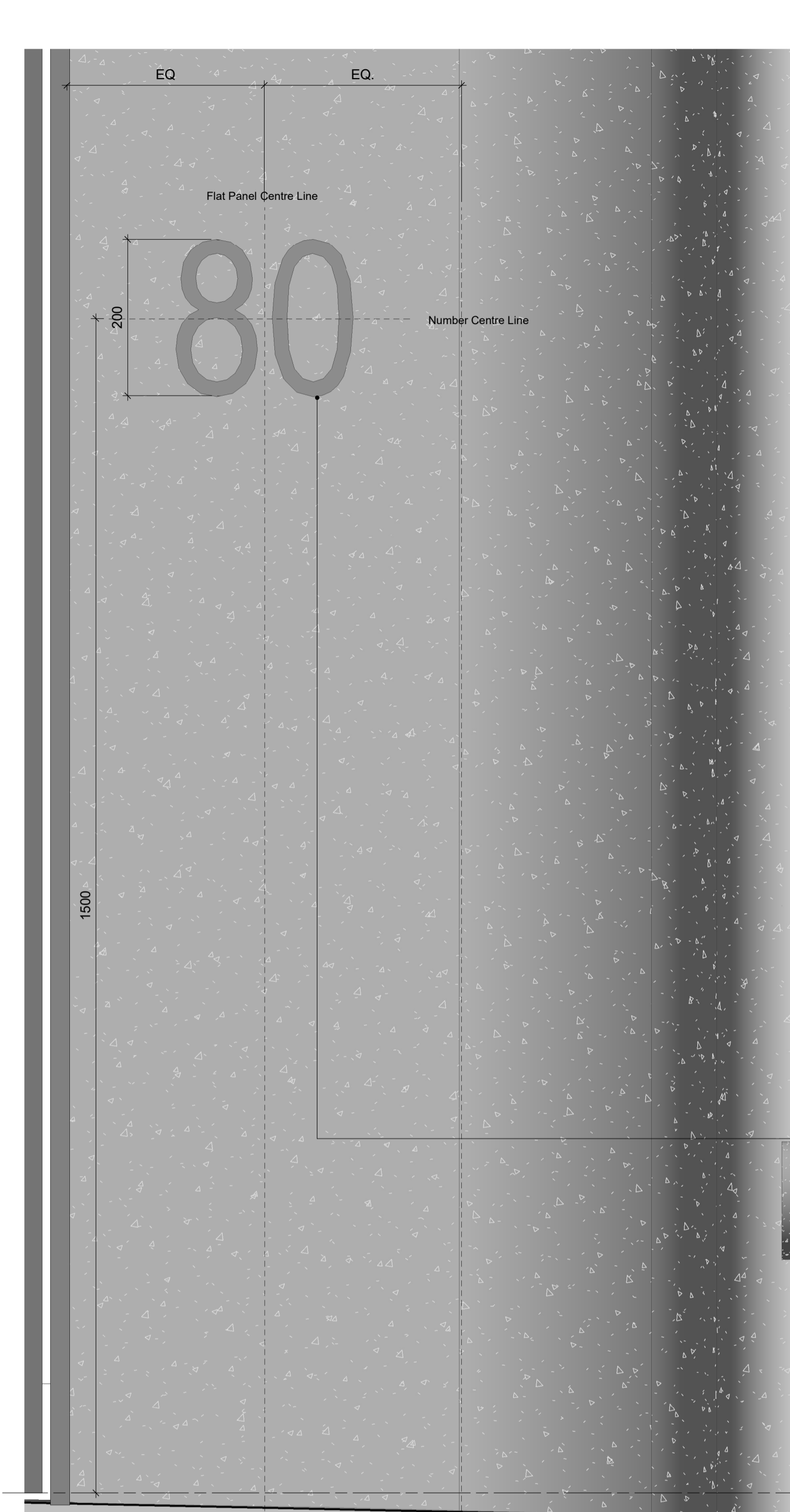
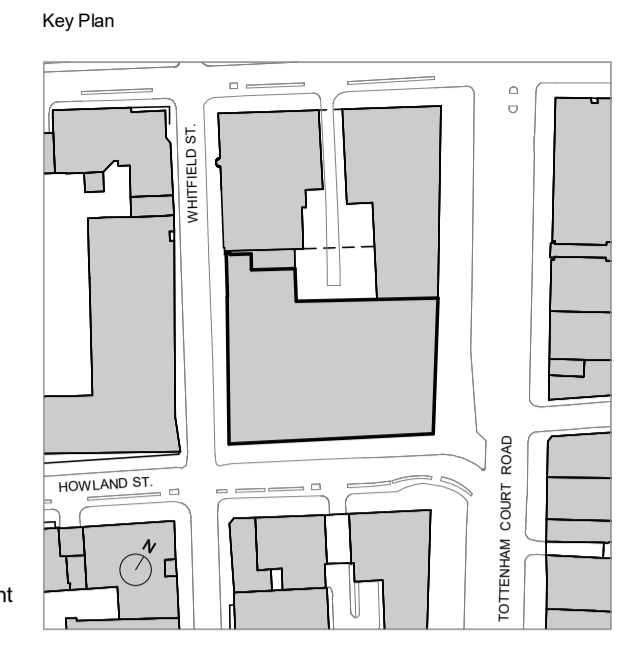
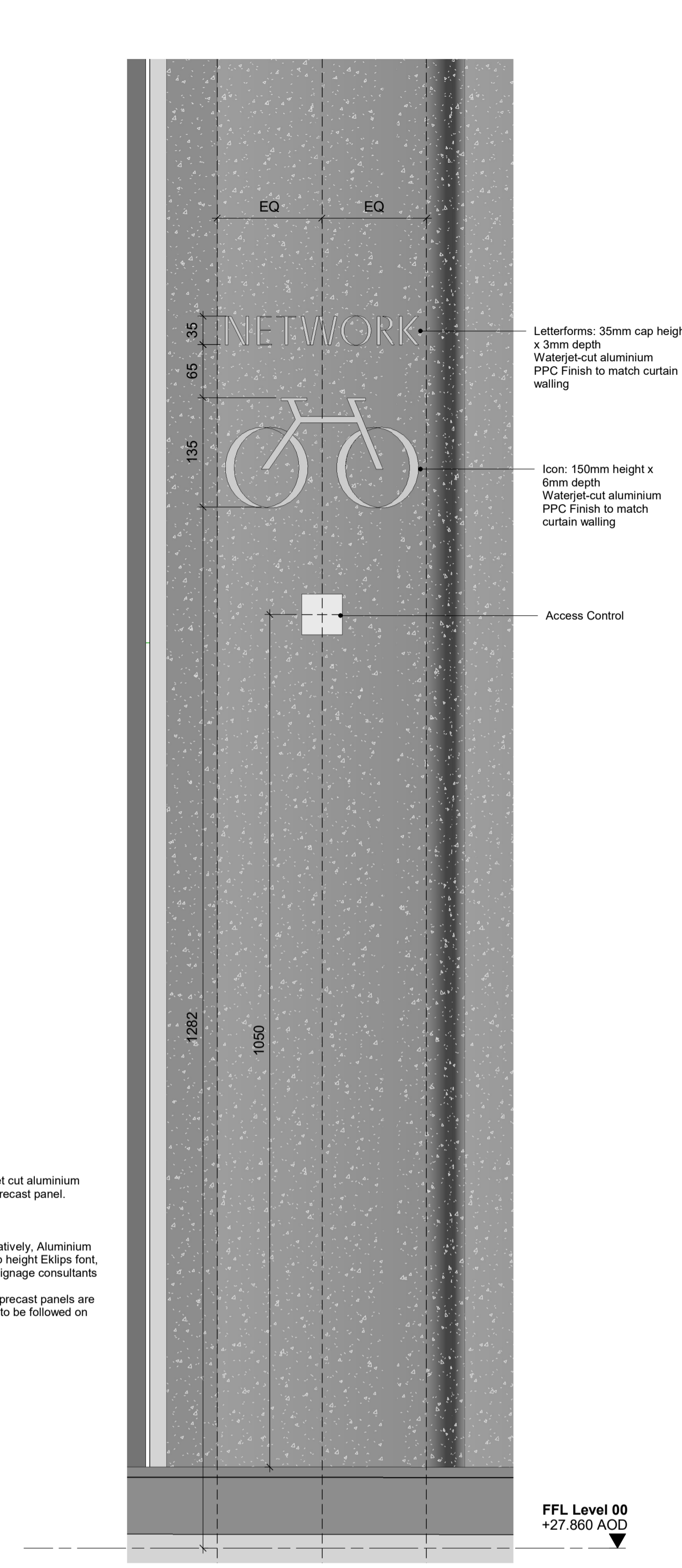


Building Number  
Recess - cast into precast panel, font shown indicatively on this drawing.  
Cast in numbers to be 400mm cap height Eklips font, refer to signage consultants information.  
Design of the recessed cast in profile TBC by PCO  
Note: TCR retail entrance precast panels are mirrored. Same principles to be followed on flat panel

Signage to be centred to the precast panel



Three sets of 6mm waterjet cut aluminium numbers post-fixed onto precast panel.  
1 off '80'  
1 off '95'  
1 off '100'  
Signage Font shown indicatively, Aluminium numbers to be 200mm cap height Eklips font, Finish RAL TBC, refer to signage consultants information  
Note: TCR retail entrance precast panels are mirrored. Same principles to be followed on flat panel



Do not scale from this drawing.

Check drawing on receipt and immediately report any discrepancies to the Architect.

Verify all dimensions and levels on site prior to construction.

The contents of this drawing are Piercy&Company copyright and shall not be re-used without their written permission.

Notes

**SPECIFICATION TAGS**

xxx-xxx Refer to FMDC Specification

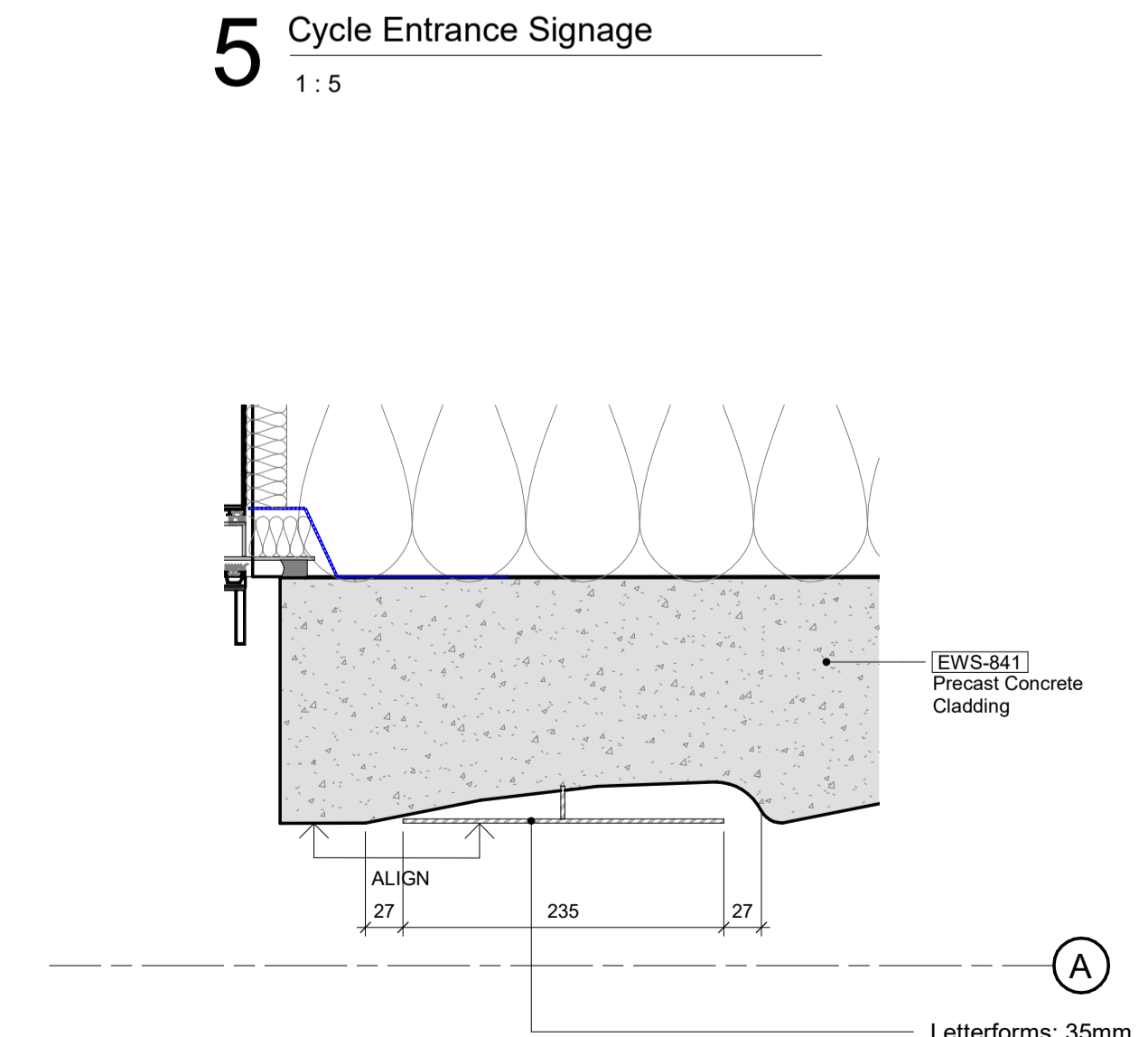
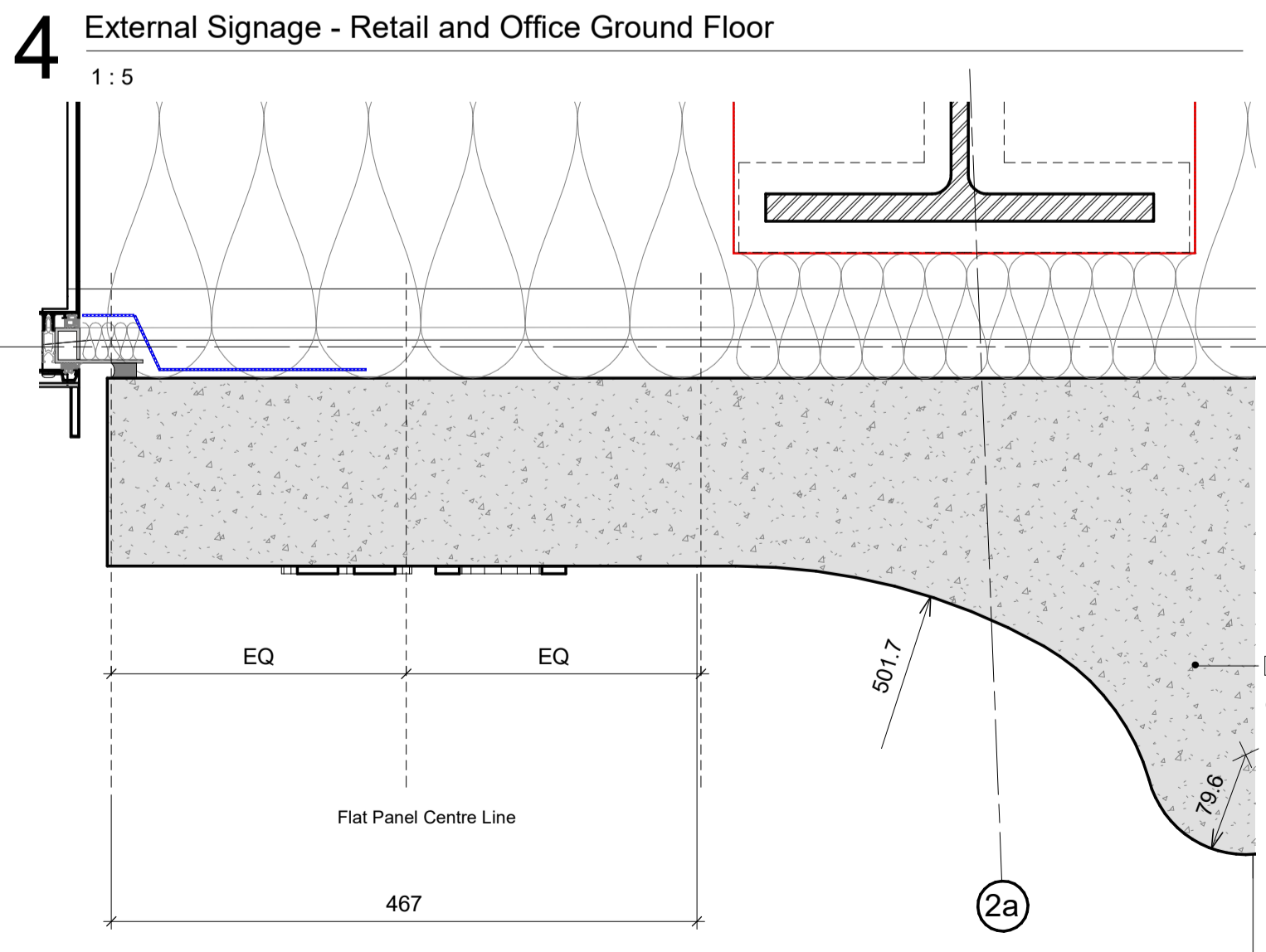
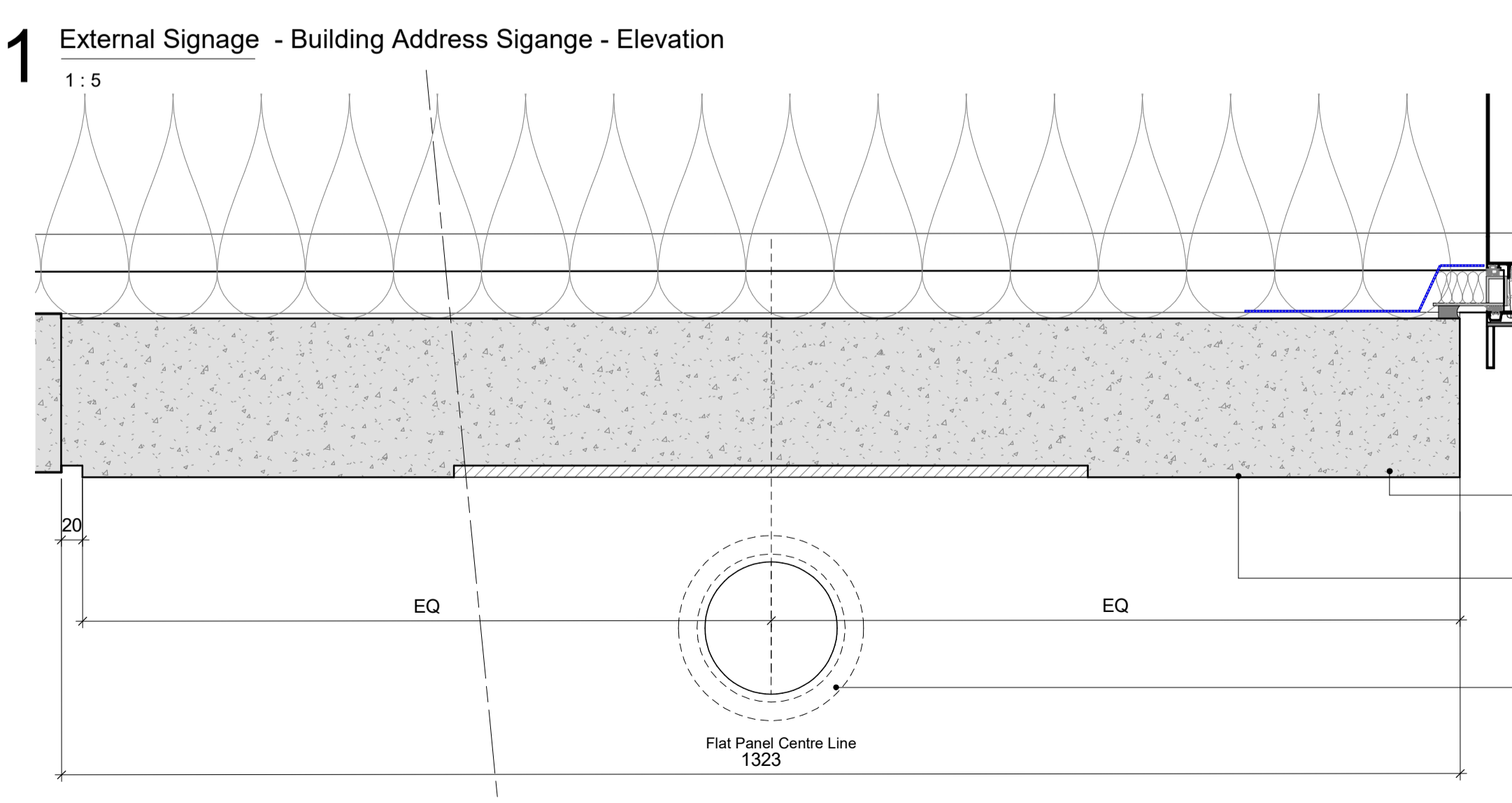
xxx-xxx Refer to P&Co Specification

Refer to FMDC Specification for Precast, Curtain Walling and Window & Doors performance specification  
For all facade pressings sealant, flashings, associated elements etc. refer to FMDC specifications and the systems descriptions/relevant clauses for the external wall type. Refer to signage consultants information for external signage design intent  
Refer to 21-100 - 21-104 scoping set for Facade Types  
Refer to 04 series for CW Scoping Types  
Refer to 22-100 for opening vent and Door Types  
**Refer to Door, Ironmongery and operation schedule for further information.**  
**External door operation and power/automation requirement under review. Sub contractor input required. All door hardware is indicative pending input - manufacturer to advise on shoot bolt suitability**

Waterproofing

Vapour Barrier

P03	09.10.23	Planning Issue - Discharge of conditions	KC
P02	16.01.23	Stage 4 - Employer's Requirements Issue	TM
P01	14.12.22	Stage 4 - Issue for Tender	TM
Rev	Date	Description	Issued



**Piercy&Company**

Piercy&Company  
39 Plender Street  
London NW1 0DT

T +44(0)20 74249611  
info@piercyandco.com  
www.piercyandco.com

Client  
**DERWENT LONDON**

Project  
**THE NETWORK BUILDING**  
**95-100 Tottenham Court Rd.**

Drawing Title  
**External Sigange - Building Number**

Drawing Status	Drawing: KC	Revision
<b>PLANNING</b>	Checked: HB	<b>P03</b>
Date:	Scale @ A1	Scale @ A3
<b>09.10.23</b>	<b>1 : 5</b>	<b>1 : 10</b>
Drawing No.	<b>13538-PCO-XX-XX-DR-A-79-601</b>	