

CONTROL NOTES:

CONTROLLED SYSTEM SPECIFIED BY OTHERS. NOTIONAL LOCATIONS FOR CONTROL PLATE POINTS SHOWN AS CODE 'CP'. ELECTRICIAN TO CHECK WITH CONTROL SYSTEM SPECIFIER ON PROPER CABLING TYPE REQUIRED TO THESE CONTROL PLATE POINTS.

ALL LIGHTING CIRCUITS DESIGNATED 'TRAIL' ARE TRAILING EDGE DIMMABLE. EACH CIRCUIT WILL REQUIRE 230V INDIVIDUAL FEED FROM CONTROL SYSTEM RACKS.

ALL LIGHTING CIRCUITS DESIGNATED '1-10V' ARE 1-10 VOLT DIMMABLE. EACH CIRCUIT WILL REQUIRE 230V INDIVIDUAL FEED FROM CONTROL SYSTEM RACKS AND SUITABLE INSULATED 2 CORE CABLE INFORMATION FEED FROM SAME RACKS.

ALL LIGHTING CIRCUITS DESIGNATED 'DALI' ARE DALI DIMMABLE. EACH CIRCUIT WILL REQUIRE 230V INDIVIDUAL FEED FROM CONTROL SYSTEM RACKS AND SUITABLE INSULATED 2 CORE CABLE INFORMATION FEED FROM SAME RACKS.

ALL LIGHTING CIRCUITS DESIGNATED 'SWIT' ARE SWITCHED, NOT DIMMABLE. EACH CIRCUIT WILL REQUIRE 230V INDIVIDUAL FEED FROM CONTROL SYSTEM RACKS.

ALL LIGHTING CIRCUITS DESIGNATED 'DMX' ARE DMX CONTROLLED. EACH CIRCUIT WILL REQUIRE 230V INDIVIDUAL FEED FROM CONTROL SYSTEM RACKS AND SUITABLE INSULATED CAT 5 FTP SCREENED CABLE INFORMATION FEED FROM SAME RACKS.

GENERAL NOTES:

ALL FITTINGS MARKED 'e' ARE EMERGENCY AND REQUIRE MAINS POWER AND DEDICATED DALI INPUT

FITTING TYPE NOTES:

PT-XG: SPIKE MOUNTED IP RATED ADJUSTABLE SPOTLIGHTS TO BE SET INTO PLANTERS WITH UP TO 2 METRES OF SPARE CABLING TO BE SUPPLIED BY CONTRACTOR TO ALLOW FINAL LOCATION OF FITTING ON SITE DURING COMMISSIONING. FITTINGS TO WIRE BACK TO REMOTE PT-XG DRIVER UNITS LOCATED UNDER RAISED FLOOR - UP TO 8NO PT-XG FITTINGS TO CONNECT BACK TO ANY PT-XG DRIVER UNIT.

PT-XG DRIVER: MANUFACTURER SUPPLIED IP RATED JUNCTION BOXES HOUSING 60WATT DALI ENABLED DRIVER. JUNCTION BOXES TO BE TAPPED AND GLANDED TO ALLOW UP TO 8NO OUTPUTS TO LIGHT FITTINGS FROM EACH UNIT. BOXES LOCATED UNDER RAISED FLOOR - UP TO 4NO PT-XG FITTINGS TO CONNECT BACK TO ANY PT-XG DRIVER UNIT.

PT-XH: STAND MOUNTED IP RATED ADJUSTABLE SPOTLIGHTS TO BE MOUNTED TO SUPPORT GROUNDS BY OTHERS UNDERNEATH ELEFANT GRATING AND PASS THROUGH GRATING. FITTINGS TO WIRE BACK TO REMOTE PT-XH DRIVER UNITS LOCATED UNDER RAISED FLOOR - UP TO 4NO PT-XH FITTINGS TO CONNECT BACK TO ANY PT-XH DRIVER UNIT.

PT-XH DRIVER: MANUFACTURER SUPPLIED IP RATED JUNCTION BOXES HOUSING 60WATT DALI ENABLED DRIVER. JUNCTION BOXES TO BE TAPPED AND GLANDED TO ALLOW UP TO 8NO OUTPUTS TO LIGHT FITTINGS FROM EACH UNIT. BOXES LOCATED UNDER RAISED FLOOR - UP TO 4NO PT-XH FITTINGS TO CONNECT BACK TO ANY PT-XH DRIVER UNIT.

PT-XJ: SOFFIT RECESSED IP RATED MINI DOWNLIGHT IN RECTANGULAR FORM - WILL REQUIRE HOLE TO BE CUT INTO STONE CLADDING TO ALLOW MOUNTING. REMOTE IP RATED DALI ENABLED DRIVER ACCESSED THROUGH FITTING CUT-OUT. FITTING HAS 14.5MM DROP BEZEL THICKNESS.

PT-XL: SOFFIT RECESSED IP RATED MINI DOWNLIGHT IN RECTANGULAR FORM - WILL REQUIRE HOLE TO BE CUT INTO STONE CLADDING TO ALLOW MOUNTING. REMOTE IP RATED DALI ENABLED DRIVER ACCESSED THROUGH FITTING CUT-OUT. FITTING HAS 14.5MM DROP BEZEL THICKNESS. REMOTE IP RATED AND DALI ENABLED 3HR EMERGENCY BATTERY SOURCE AND INVERTER LOCATED WITHIN OFFICE SPACE CEILING WITH CHANGE-OVER RELAY. CONTRACTOR TO PROVIDE FIRE/STUFF OR EQUAL FIRE-RATED SUPPLY CABLE BETWEEN LIGHT FITTING AND BATTERY.

PT-XK: INGROUND FLUSH RECESSED IP RATED UPLIGHT SOURCE WITH INTEGRAL DALI DRIVER. MOUNTED INTO GRAVEL ZONE OF PERIMETER. CONTRACTOR TO ENSURE ADEQUATE DRAINAGE WITHIN SUBSTRATE AS PER MANUFACTURERS INSTALLATION INSTRUCTIONS.

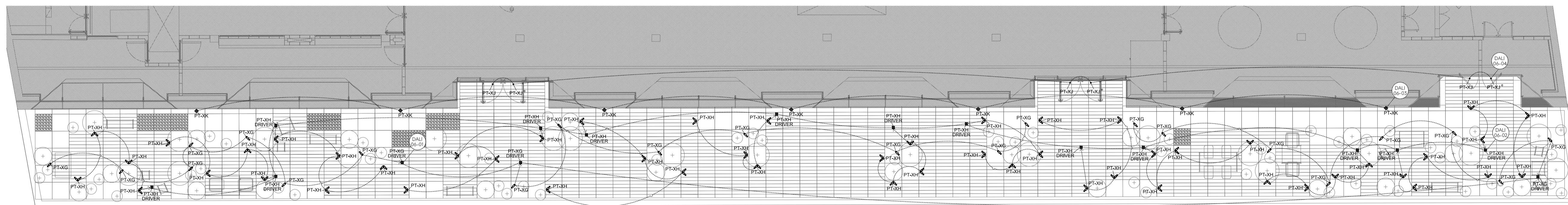


SITE MAP:

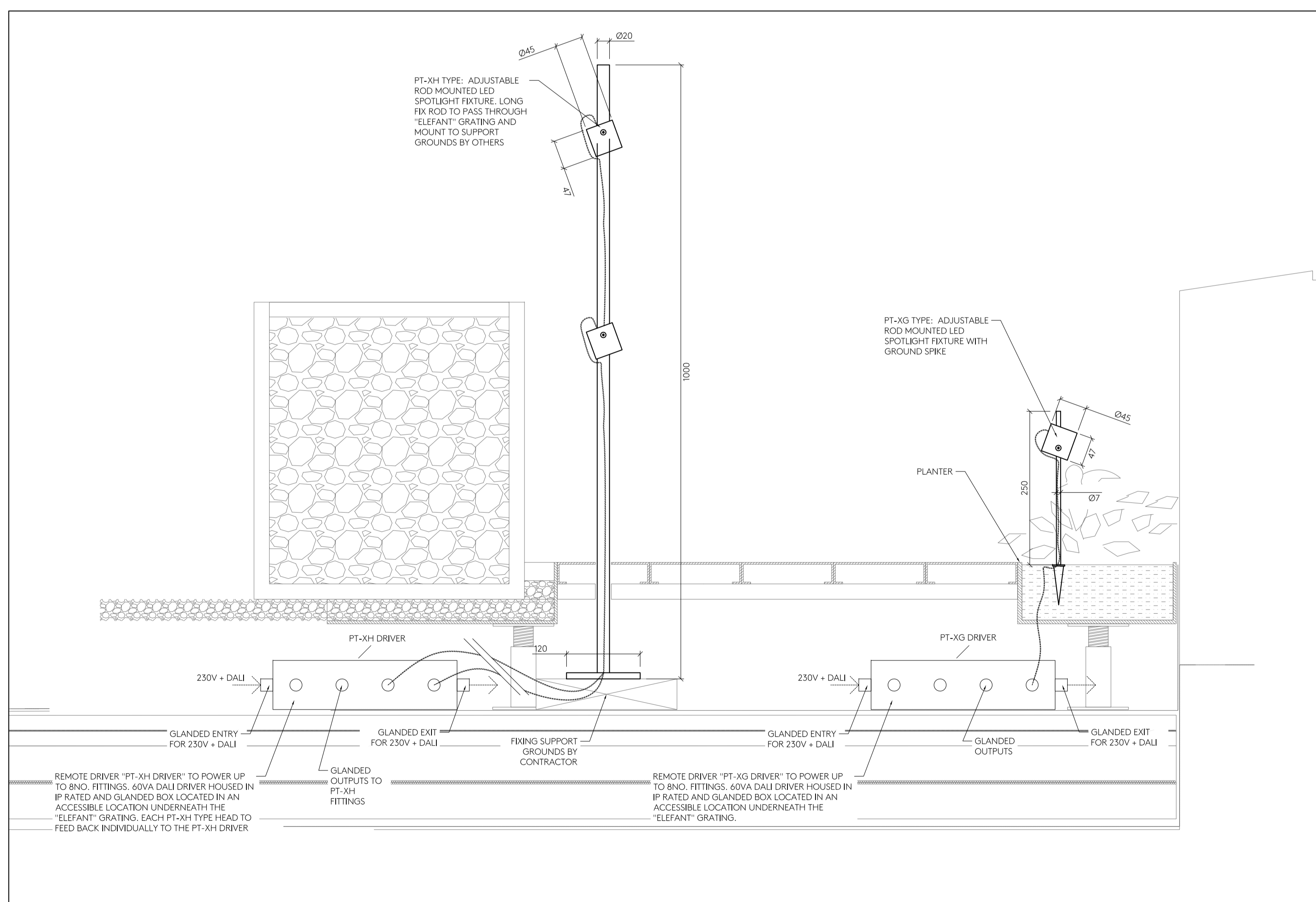
HATCH KEY:

LIGHTING BY OTHERS

LIGHTING BY PRITCHARD THEMIS REFER TO DRAWING NOTES FOR DRAWING NUMBER



A PROPOSED EIGHTH FLOOR PLAN - TERRACE
1:100



B SECTION DETAIL SHOWING PT-XG AND PT-XH TYPES
1:5

REV	DESCRIPTION	DATE	BY

THIS DRAWING IS THE PROPERTY OF PRITCHARD THEMIS LTD.

Drawing to be read in conjunction with PRITCHARD THEMIS LTD specification schedule.

All copyright is reserved and the drawing is issued on the condition that it is not copied, reproduced, retained or disclosed to any unauthorised person, either wholly or in part without the consent of PRITCHARD THEMIS LTD.

All electrical works associated with this drawing to be in accordance with the latest edition of IEE wiring regulations.

CLIENT:
LAZARI INVESTMENTS LTD

PROJECT:
MAPLE HOUSE PHASE 2

DRAWING TITLE:
LEVEL 8 BLOCK-A TERRACE
LIGHTING AND SECTION DETAIL

JOB NO:
PTL908

DRAWING NO:
PTL908 p06

FIRST ISSUED:
09.02.24

REVISION:
*

SCALE:
VARIOUS@A1

CREATED BY:
ET

Pritchard Themis

38 Bocking Street
London
E8 5EP

t: 00 44 (0) 207 650 0700
w: pritchardthemis.com