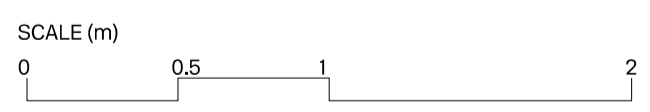


Area of elevation relevant to planning application

01 Section

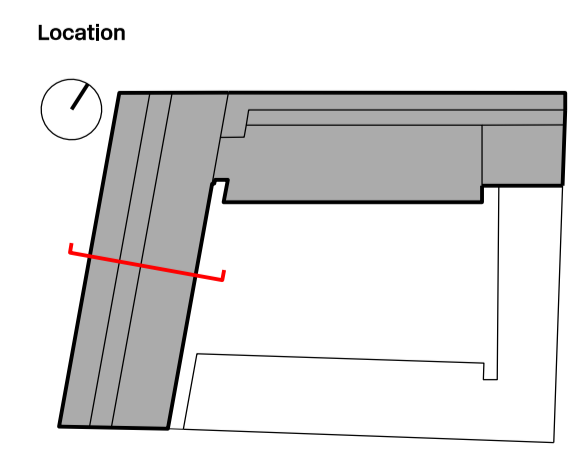


**Drawing Notes**

Rev	Date	Status	Note
01	09.02.2024	Planning	Planning Issue

Team	
Client	Lazari Investments Ltd
Architect	Gibson Thornley Architects
Landscape Architect	Studio ONB
Graphic Designer	BOB Design
Structural Engineer	Quadrant Harmon
Civil Engineer	GLP
MEP Engineer	GLP
Fire Consultant	Janson Hughes
Sustainability Consultant	GLP
Cost Consultant	C N Associates
Lighting Consultant	Pritchard Themis
Planning Consultant	CBRE
Approved Inspector	Salus
Project Manager	Cushman & Wakefield

- General Notes**
- Do not scale from this drawing.
  - All dimensions to be checked on site by the contractor and such dimensions to be his responsibility.
  - Report all drawing errors, omissions and discrepancies to the architect.
  - This document may be used in an uncontrolled CAD format to enable others to use it as background information to make alterations and/or additions. In that instance the file will be accompanied by a PDF version. It is for those making such alterations and additions to ensure that they make use of current background information.
  - Gibson Thornley Architects accepts no liability for any such alterations or additions to the background information or arising out of changes to background information which occur prior to alterations or additions being made.



**Gibson Thornley Architects**

Job Title: Maple House  
 Drawing Title: Proposed Eighth Floor Terrace & Roof Section

Drawn by: FOS  
 Checked by: LP  
 Scale: 1:25 @ A1 / 1:50 @ A3  
 Status: Planning

Project Zone Type Classification Drawing No Revision  
 20024B - AL [00] 364 01

Gibson Thornley Architects Limited  
 No. 4 The Hangar, Perseverance Works  
 25-27 Hackney Road  
 London E2 7NX

+44 (0)20 7729 7064  
 www.gibsonthornley.com