

01 Elevation

Drawing Notes

Rev	Date	Status	Note
01	09.02.2024	Planning	Planning Issue

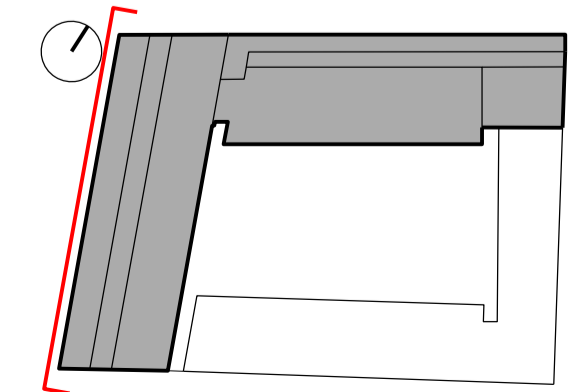
Team

Client
Lazari Investments Ltd
Architect
Gibson Thornley Architects
Landscape Architect
Studio ONB
Graphic Designer
BOB Design
Structural Engineer
Quadrant Harmon
Civil Engineer
GLP
MEP Engineer
GLP
Fire Consultant
Janson Hughes
Sustainability Consultant
GLP
Cost Consultant
C N Associates
Lighting Consultant
Pritchard Themis
Planning Consultant
CBRE
Approved Inspector
Salus
Project Manager
Cushman & Wakefield

General Notes

- Do not scale from this drawing.
- All dimensions to be checked on site by the contractor and such dimensions to be his responsibility.
- Report all drawing errors, omissions and discrepancies to the architect.
- This document may be used in an uncontrolled CAD format to enable others to use it as background information to make alterations and/or additions. In that instance the file will be accompanied by a PDF version. It is for those making such alterations and additions to ensure that they make use of current background information.
- Gibson Thornley Architects accepts no liability for any such alterations or additions to the background information or arising out of changes to background information which occur prior to alterations or additions being made.

Location



Gibson Thornley Architects

Job Title
Drawing Title
Maple House
Proposed West Elevation
Drawn by
Checked by
Scale
Status
FOS
LP
1:100 @ A1 / 1:200 @ A3
Planning

Project Zone Type Classification Drawing No Revision
20024B - AL [00] 210 01

Architects

Gibson Thornley Architects Limited
No. 4 The Hangar, Perseverance Works
25-27 Hackney Road
London E2 7NX

+44 (0)20 7729 7064
www.gibsonthornley.com