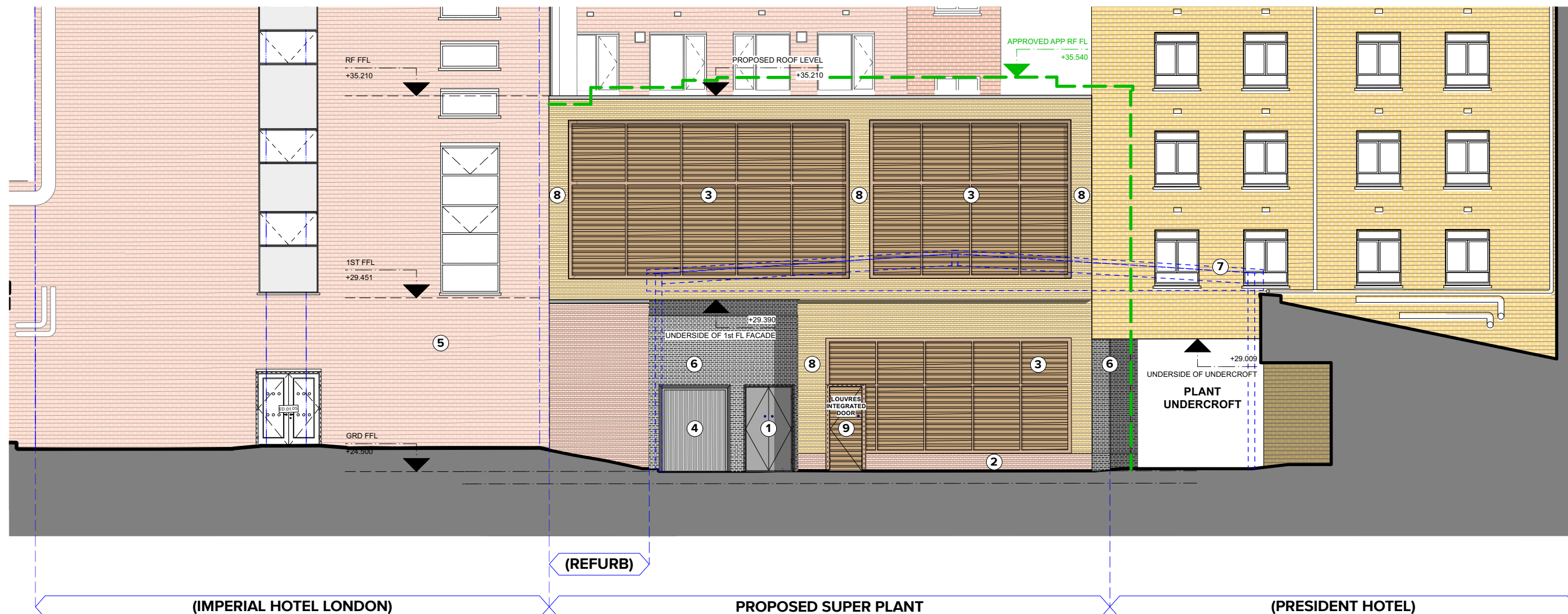


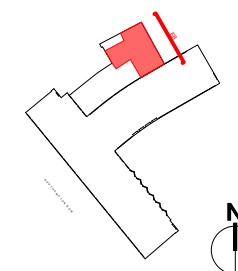
**PROPOSED SUPER PLANT - NORTH EAST ELEVATION
AS PER NMA APPLICATION**

PLANNING LINE AS APPROVED
APPLICATION REFERENCE: 2019/2766/P



SUPER PLANT AREA MATERIALS KEY

NB: NOTES HIGHLIGHTED REFER TO THIS ELEVATION		To be read in conjunction with 1417-P113 (A) Proposed Materials Board	
1	PROPOSED SOLID STEEL DOOR EXISTING TO BE REPLACED WITH SOLID STEEL DOOR.	5	EXISTING FAÇADE WHOLE FAÇADE TO BE CLEANED AND WASHED. TO MAKE GOOD WHERE NECESSARY.
1A	PROPOSED FIRE RATED DOOR FIRE RATED ALUMINIUM DOUBLE GLAZED UNITS WITH POLYESTER POWDER COATED FRAME.	6	EXISTING BRICKWORK STRETCHER BOND BLUE-BLACK BRICKWORK TO BE CLEANED & MADE GOOD.
2	PROPOSED BRICKWORK 01 STRETCHER BOND RUSTY-RED ENGINEERING BRICKWORK WITH GREY GROUTING.	7	REMOVAL OF EXISTING CANOPY TO BE ERECTED BACK AFTER PLANT WORKS. SEE PROPOSED CANOPY LAYOUT DRAWINGS.
3	LOUVRES ALUMINIUM PPC GRILLES TO MATCH WINDOW FRAMES. BRONZE FINISH.	8	PROPOSED BRICKWORK 02 STRETCHER BOND GREY-BLONDE ENGINEERING BRICKWORK WITH GREY GROUTING.
4	EXISTING LIFT DOOR TO BE REPLACED WITH POLYESTER POWDER COATED ALUMINIUM FRAME SHUTTER DOOR	9	STEEL DOOR WITH INTEGRATED LOUVRES FREE AIR OF THE LOUVRES TO BE IDENTIFY BY M&E CONSULTANT. BRONZE FINISH.



REF PLAN AS PER CURRENT APPLICATION. (1:500 @A3)

SOURCE INFORMATION:
Survey supplied by Maltby Surveys. Original data received on April 2018, with updates in October 2018 and March 2019. Dry Riser location, position to be confirmed by M&E specialist.

