



General Arrangement Notes

- Not in scope
- Area in scope
- Area not surveyed

0 1 2 5m

This document and its design content is © John Robertson Architects Ltd. It shall be read in conjunction with all other associated project information including models, specifications, schedules and related consultants documents. Do not scale from documents. All dimensions to be checked on site. Immediately report any discrepancies, errors or omissions on this document to the Originator. If in doubt ASK.

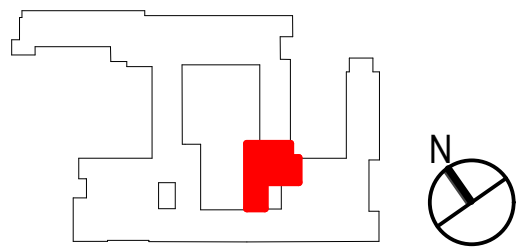
Source File: BIMModel: STBEM23 - BIMModel: Basic for ArchiCAD 291998 BMA House1998-JRA-02-02-M5A-0001
BMA House Team Model_WORKSTREAM2

| Rev | Date | Dwn | Chk | Description |
|-----|------------|-----|-----|--------------|
| P01 | 18/10/2023 | 08 | LM | For Planning |

| Rev | Date | Dwn | Chk | Description |
|-----|------|-----|-----|-------------|
|-----|------|-----|-----|-------------|

| Rev | Date | Dwn | Chk | Description |
|-----|------|-----|-----|-------------|
|-----|------|-----|-----|-------------|

KEY PLAN / NORTH SYMBOL



JRA
John Robertson Architects
111 Southwark Street,
London, SE1 1UF
02076335100
www.jra.co.uk
enquiries@jra.co.uk

Project
Tavistock House
London
Client
British Medical Association
BMA House, Tavistock Square London
WC1H 9LP
0200 123 1233
lbeach@bma.org.uk

| Drawing Title | |
|---|-------------------------------------|
| Block F - Proposed Fifth Floor Plan (Attic) | |
| Scale | 1:50 @ A0 Internal Project No. 1998 |
| Dwg No. | 1998-JRA-02-05-DR-A-0195 |
| Suitability | FOR INFORMATION S2 |
| Revision | FOR PLANNING P01 |