

General Arrangement Notes

Not in scope

Area in scope

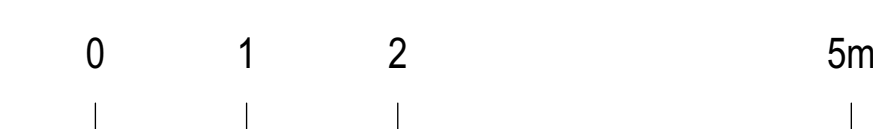
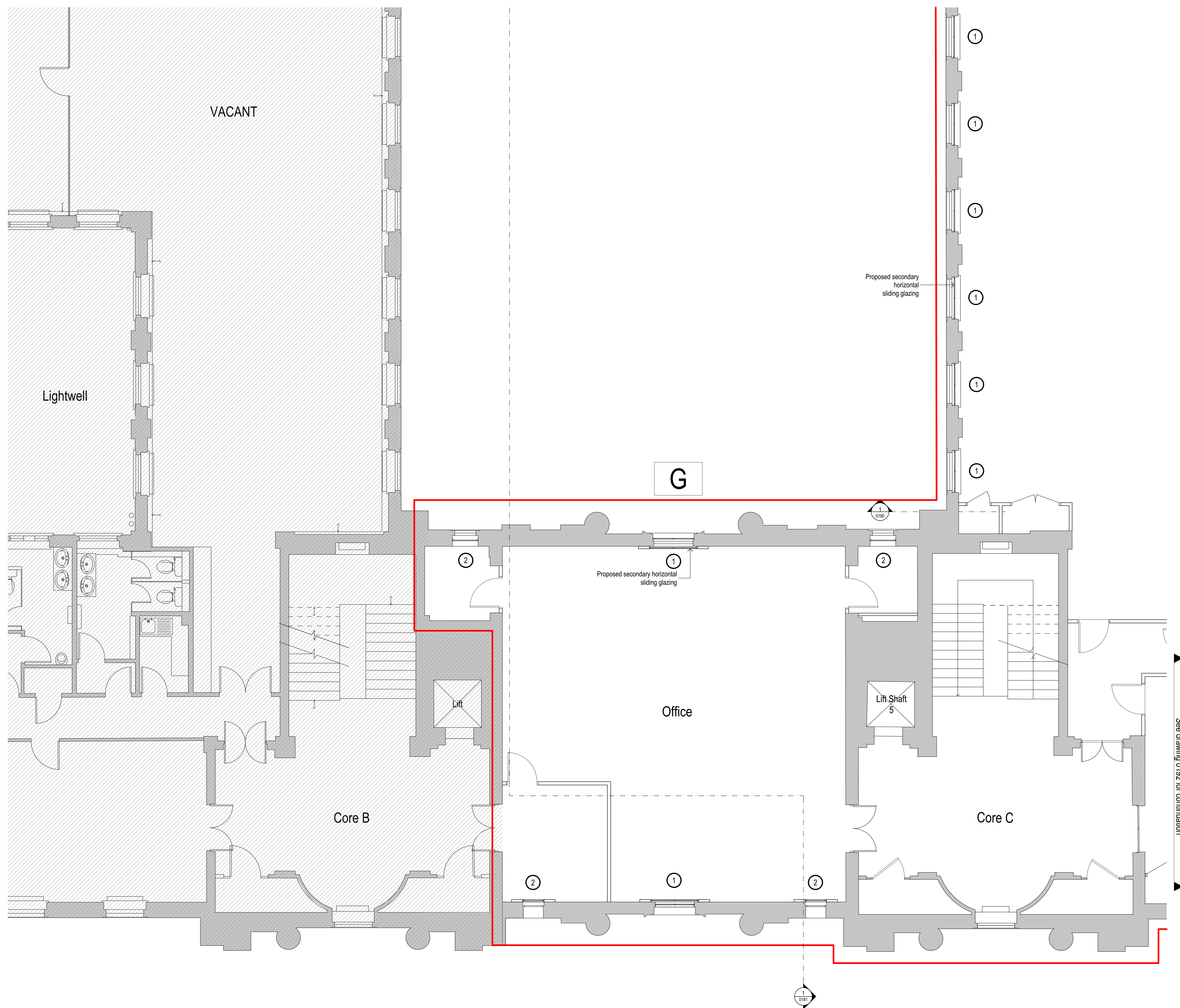
Area not surveyed

Proposed secondary sliding glazing, retained timber sill boards

Proposed secondary side hung glazing, retained timber sill boards

Proposed insulated panel behind existing frosted glass window with mechanical ventilation grill

Note:
1. Primary window to be made good internally. Solar film applied to internal face.
2. Where 's' denotes new timber sill board to match retained timber sill

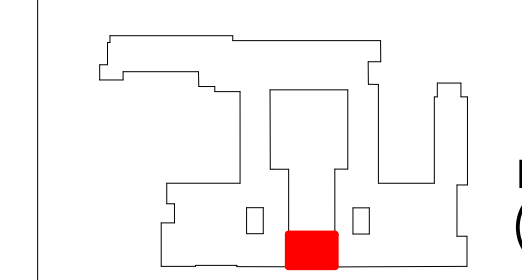


Rev	Date	Dwn	Chk	Description
P01	18/10/2023	OS	LM	For Planning

Rev	Date	Dwn	Chk	Description

Rev	Date	Dwn	Chk	Description

KEY PLAN / NORTH SYMBOL



JRA
John Robertson Architects
111 Southwark Street,
London, SE1 1UF
02076335100
www.jra.co.uk
enquiries@jra.co.uk

Project
Tavistock House
London

Client
British Medical Association
BMA House, Tavistock Square London
WC1H 9JP
0200 123 1233
bma@bma.org.uk

Drawing Title
Block G - Proposed Third Floor Plan

Scale 1:50 @ A0 Internal Project No. 1998

Dwg No. **1998-JRA-02-03-DR-A-0193**

Suitability FOR INFORMATION S2

Revision FOR PLANNING **P01**