

General Arrangement Notes

- Not in scope
- Area in scope
- Area not surveyed

0 1 2 3 4 5 10m

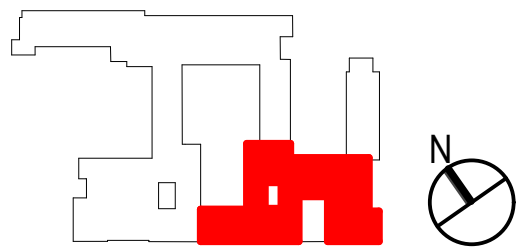
| Rev | Date | Dwn | Chk | Description |
|-----|------------|-----|-----|-----------------|
| P01 | 02/02/2023 | LM | LM | For Information |
| P02 | 24/07/2023 | PP | LM | For Planning |
| P03 | 01/08/2023 | PP | LM | For Planning |
| P04 | 18/10/2023 | OS | LM | For Planning |

Detail markers added

| Rev | Date | Dwn | Chk | Description |
|-----|------|-----|-----|-------------|
|-----|------|-----|-----|-------------|

| Rev | Date | Dwn | Chk | Description |
|-----|------|-----|-----|-------------|
|-----|------|-----|-----|-------------|

KEY PLAN / NORTH SYMBOL



JRA
John Robertson Architects
111 Southwark Street,
London, SE1 1UF
02076335100
www.jra.co.uk
enquiries@jra.co.uk

Project
Tavistock House
London
Client
British Medical
Association
BMA House, Tavistock Square London
WC1H 9LP
0300 123 1233
lbesch@bma.org.uk

Drawing Title
Block F & G - Proposed Third Floor
Plan
Scale 1:100 @ A0 Internal Project No. 1998
Dwg No. 1998-JRA-02-03-DR-A-0163
Suitability FOR INFORMATION S2
Revision FOR PLANNING P04