

▼ + TOP 68.480

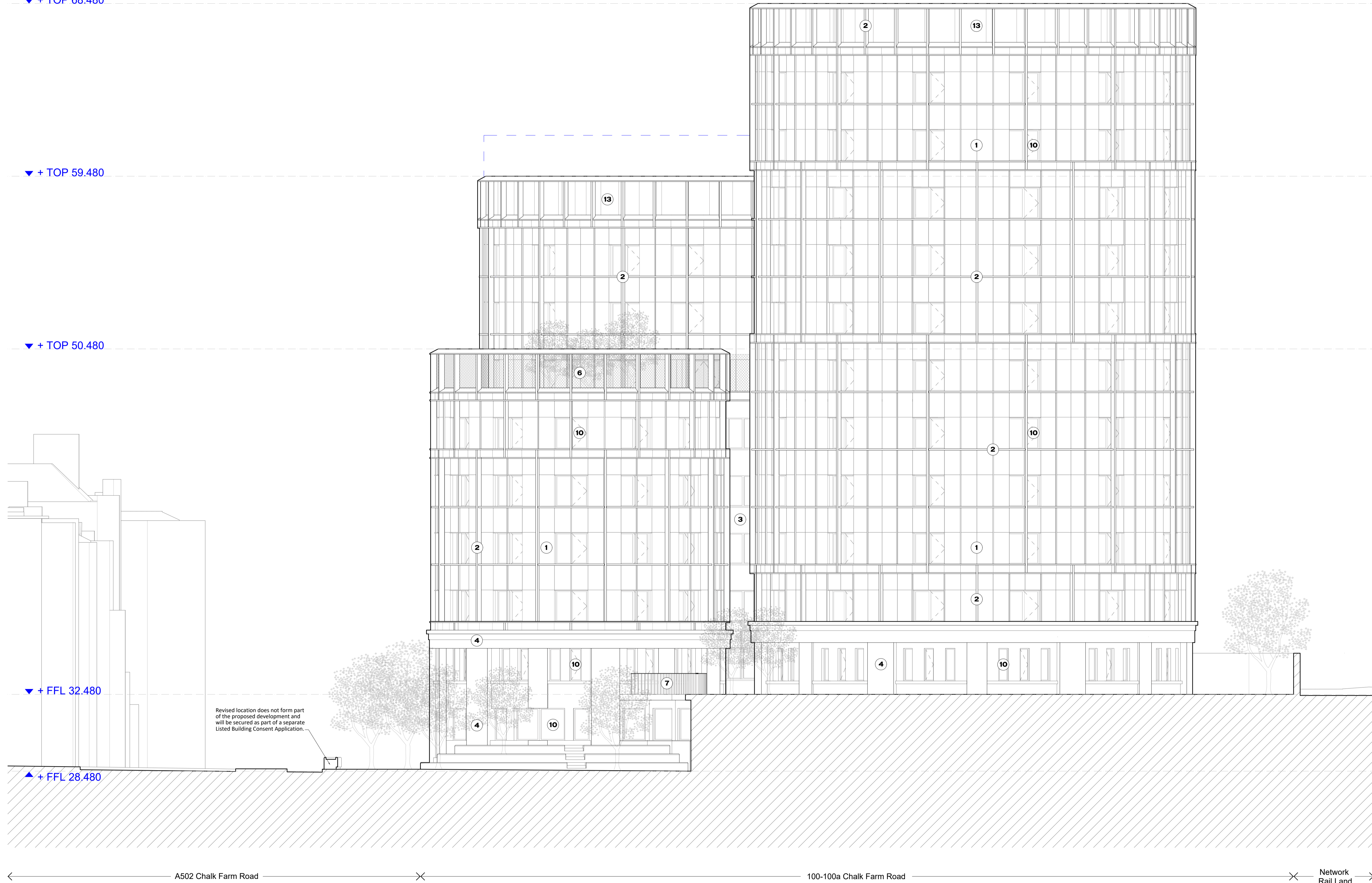
▼ + TOP 59.480

▼ + TOP 50.480

▼ + FFL 32.480

▲ + FFL 28.480

Revised location does not form part of the proposed development and will be secured as part of a separate Listed Building Consent Application.

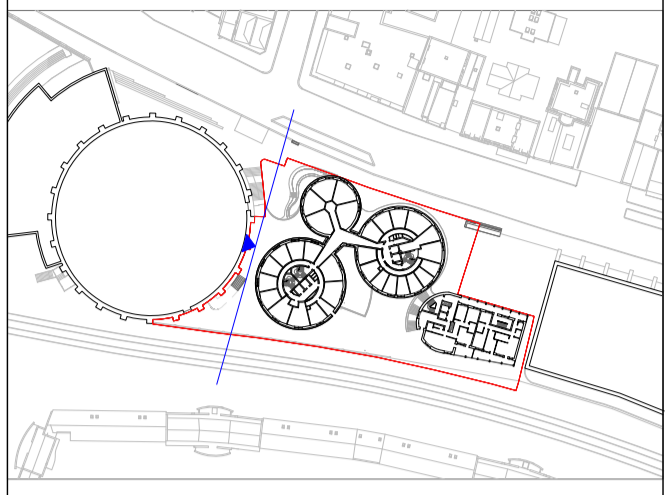


PBSA Building West Elevation 4-4



NOTES

Key Plan  
 ▼ Elevation Marker  
 Application Boundary



Drawing Key  
 Petrol Filling Station Consented Scheme, Planning Ref. 2022/3646/P

Material Key

- 1 - Terracotta Cladding
- 2 - Aluminium Profile
- 3 - Aluminium Cladding
- 4 - Brick
- 5 - Glazed Brick
- 6 - Metal Mesh
- 7 - Metal Balustrade
- 8 - Metal Fence
- 9 - Metal Gate
- 10 - Aluminium Framed Window
- 11 - Aluminium Framed Door
- 12 - Aluminium Louvers
- 13 - Plant Enclosure

A 31/01/24 Planning

# PLANNING

rev date check comments  
**DSDHA**  
 357 Kennington Lane London SE11 5QY  
 T 020 7703 3555  
 F 020 7703 3890  
 E info@dsha.co.uk  
 W www.dsha.co.uk

project  
100 Chalk Farm Road

drawing title  
PBSA Building West Elevation

drawn	size	date	scale
FI	A1	31/01/24	1:100

drawing number	revision
356_P30.123	A

REPORT DISCREPANCIES DO NOT SCALE FROM THIS DRAWING COPYRIGHT DSDHA  
 USE LATEST REVISION CHECK DIMENSIONS ON SITE