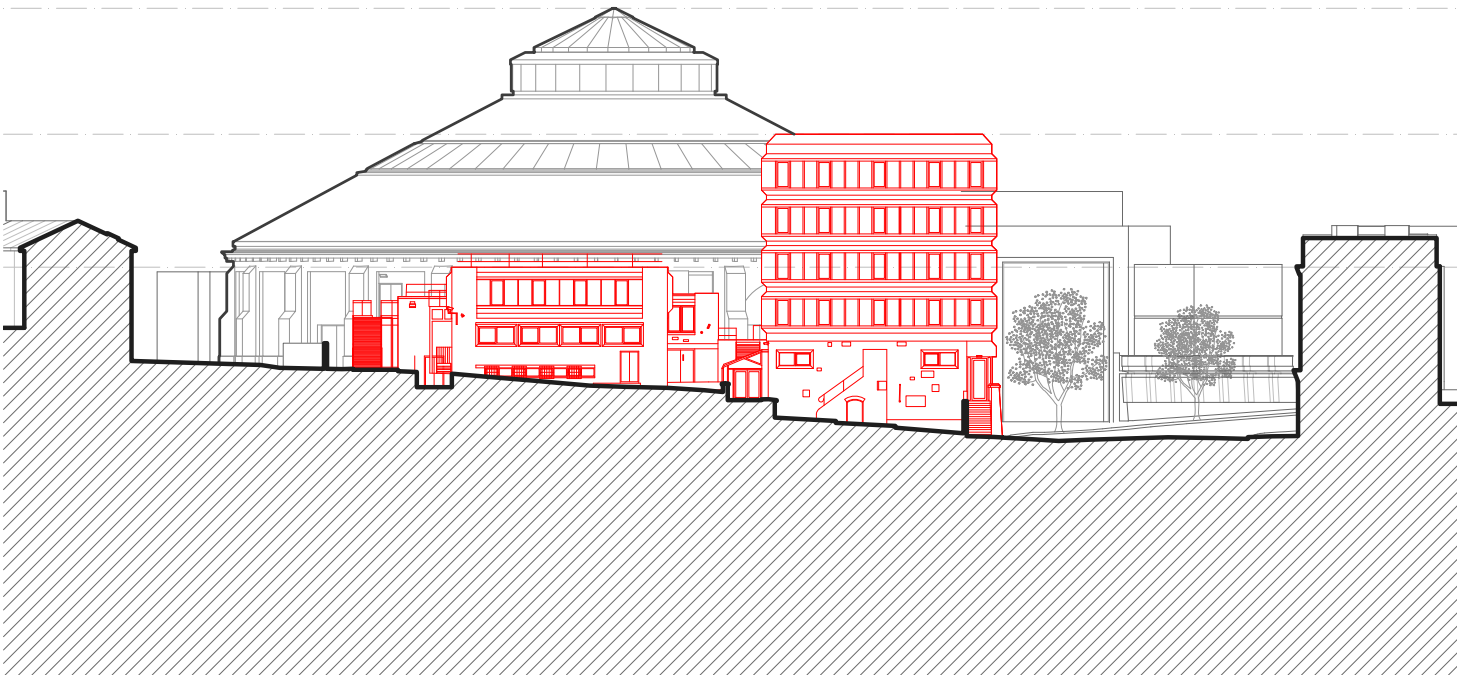


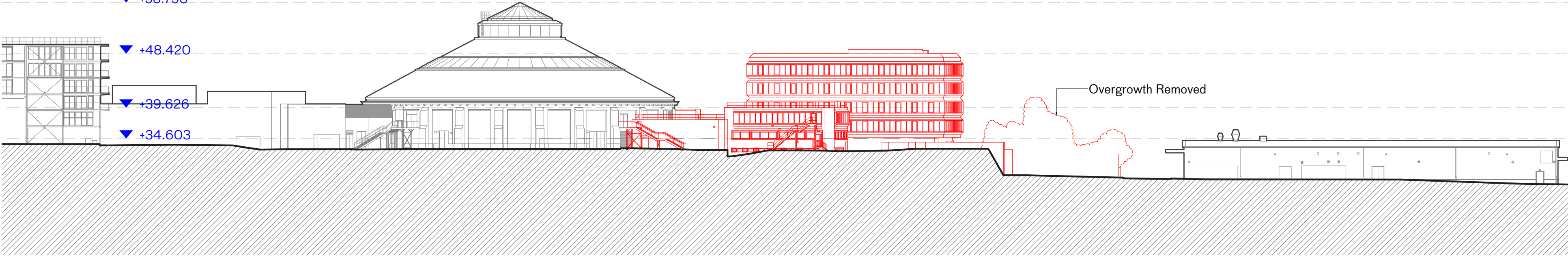
← Petrol Filling Station (PFS) Site 100-100a Chalk Farm Road The Roundhouse Theatre 212 CFR →

Elevation1-1



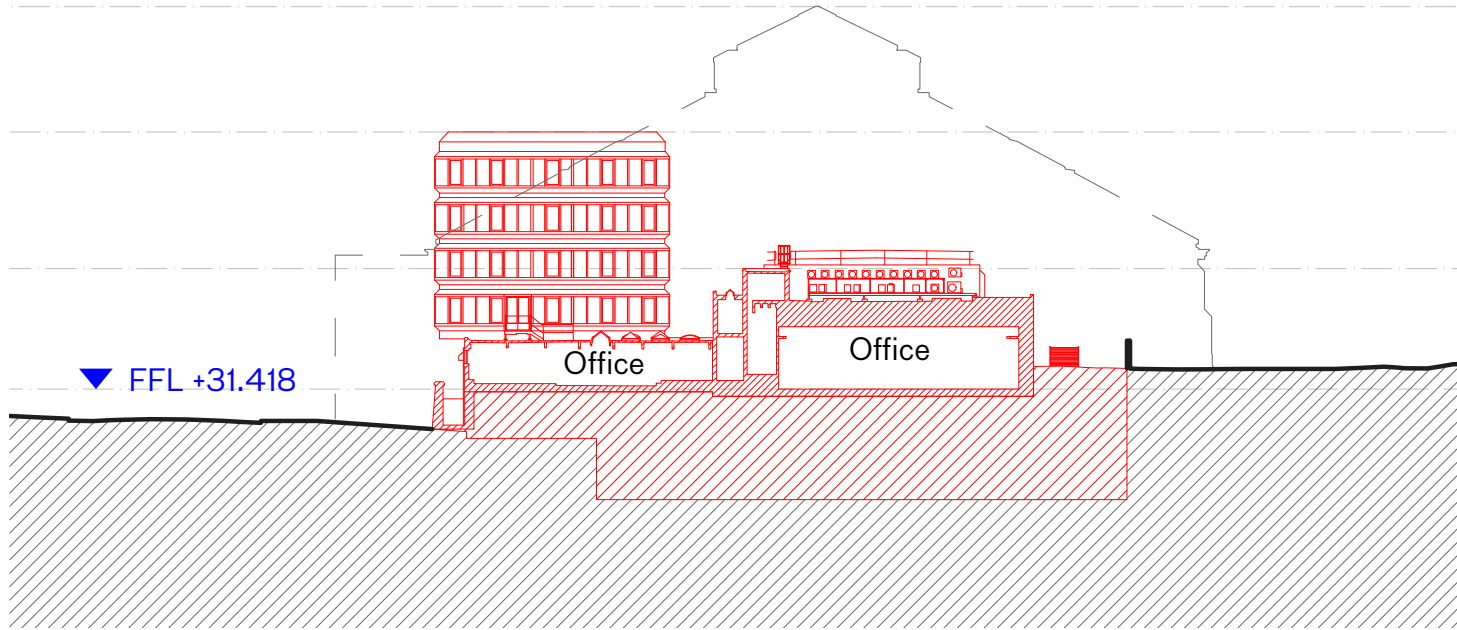
48 JC → Network Rail Land 100-100a Chalk Farm Road A502 CFR 68 CFR →

Elevation 3-3



212 CFR → The Roundhouse Theatre 100-100a Chalk Farm Road Petrol Filling Station (PFS) Site →

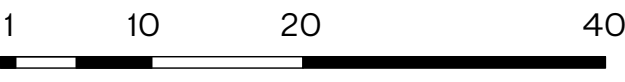
Elevation 2-2



A502 CFR 100-100a Chalk Farm Road Network Rail Land

Elevation 4-4

Demolition Context Elevations



NOTES

Key Plan

Elevation Marker

Application Boundary

Demolition

Drawing Key

CFT - Chalk Farm Road

PFS - Petrol Filling Station Site

JC - Juniper Crescent

A 31/01/24 Planning

PLANNING

rev	date	check	comments
<div>DSDHA</div> <div>357 Kennington Lane London SE11 5QY</div> <div>T 020 7703 3555</div> <div>F 020 7703 3890</div> <div>E info@dsdha.co.uk</div> <div>W www.dsdha.co.uk</div>			