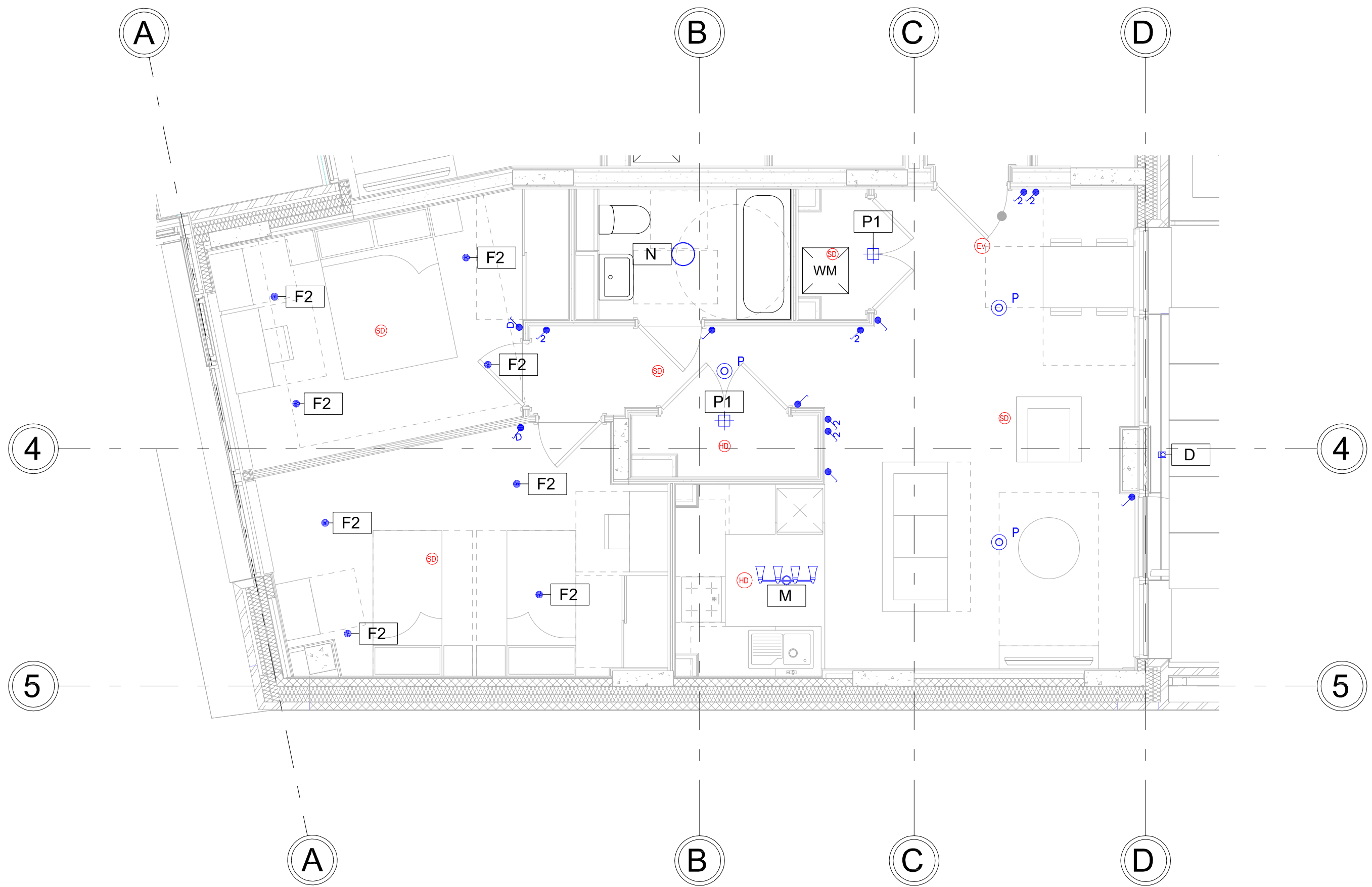
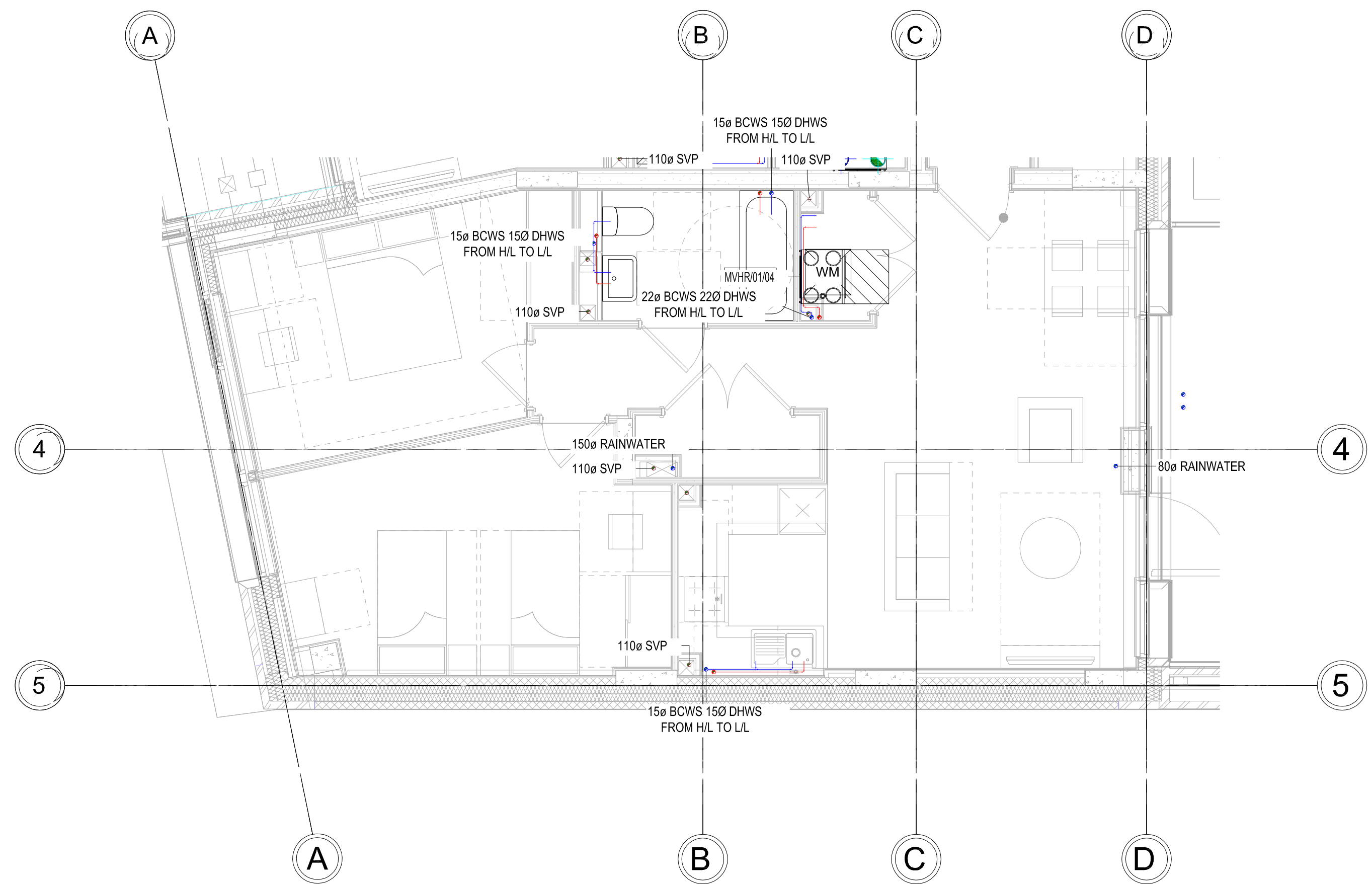


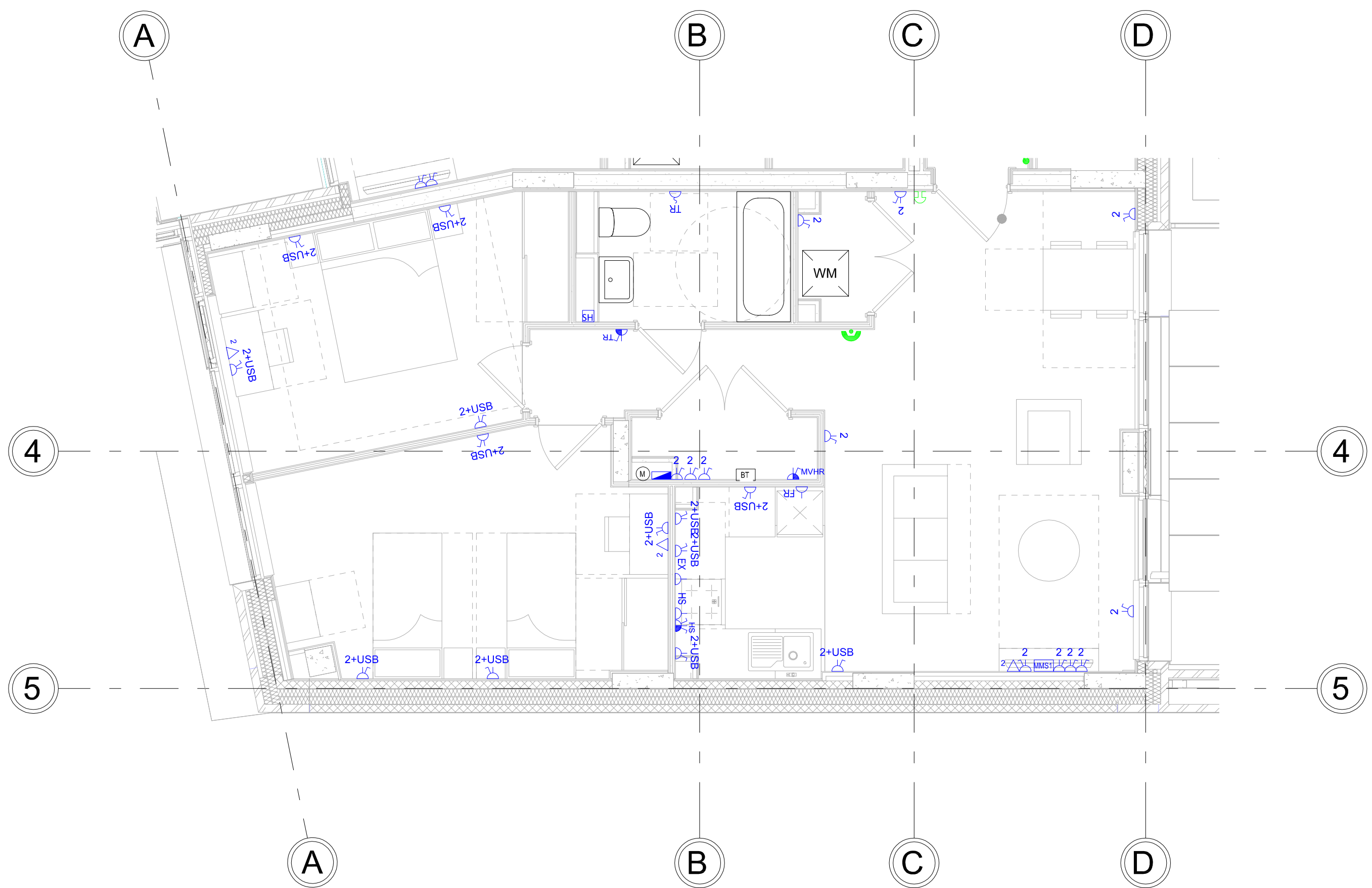
01 - Typical Apartment Type D2 - H/L
1 : 50



01 - Typical Apartment Type D2 - Lighting and FA
1 : 50



01 - Typical Apartment Type D2 - L/L
1 : 50



01 - Typical Apartment Type D2 - Small Power and AC
1 : 50

- TYPICAL ELECTRIC LEGEND:**
- BED BED HEAD CONTROL
 - BT BT SERVICES
 - DA DOOR ASSIST
 - DW DISH WASHER
 - EX EXTRACTOR FAN
 - FR FRIDGE
 - HS COOKER CONNECTION
 - MVHR MECHANICAL VENTILATION HEAT RECOVERY
 - PH PANEL HEATER
 - TR TOWEL RAIL
 - WM WASHING MACHINE
 - 1 SINGLE UN-SWITCHED SOCKET OUTLET
 - 1 TWIN UN-SWITCHED SOCKET OUTLET
 - 1 SINGLE SWITCHED SOCKET OUTLET
 - 1 TWIN SWITCHED SOCKET OUTLET
 - 1 TWIN SWITCHED SOCKET OUTLET WITH USB
 - 1 SINGLE UN-SWITCHED FUSED SPUR
 - 1 SINGLE SWITCHED FUSED SPUR
 - CONSUMER UNIT
 - 1 PHASE ELECTRIC METER
 - 1 SINGLE DATA OUTLET (WIFI-WIFI SOCKET)
 - 1 DOUBLE DATA OUTLET (WIFI-WIFI SOCKET)
 - 1 SHOWER SOCKET
 - 1 GRID SWITCH
 - 1 QUADRAPLEX OUTLET WITH 2 DOUBLE SOCKETS, DATA POINT, 2X SAT, TV, FMDAB
 - 1 DOUBLE SOCKET, DATA POINT, TV OUTLET (TV, FMDAB)
 - DOOR BELL
 - CCTV CAMERA
 - EMERGENCY OVERRIDE BUTTON
 - PUSH TO EGRESS BUTTON
 - INTERCOM
 - DOOR BELL SWITCH
 - VIDEO ENTRY PANEL
 - VIDEO ENTRY HANDSET
 - ORLIGHT TOWER 2
 - ORLIGHT 6009
 - ORLIGHT 6009 IP44
 - ORLIGHT HOXTON-BREZ7
 - XAL STRETTA SURFACE
 - ORLIGHT 1009 SURFACE 85
 - ORLIGHT IP65 RATED LED STRIP
 - ASTRO KOTO FOUR BAR
 - SYLVANIA GLOTTO 305
 - SCHNEIDER BATTEN HOLDER
 - SCHNEIDER PENDANT
 - 1 GANG 1 WAY SWITCH
 - 1 GANG 2 WAY SWITCH
 - 2 GANG 1 WAY SWITCH
 - INTERMEDIATE SWITCH
 - DIMMER SWITCH
 - STROBE BEACON WITH SOUNDER
 - FIRE ALARM INTERFACE
 - HEAT DETECTOR
 - HEAT DETECTOR WITH SOUNDER
 - HEAT DETECTOR WITH BEACON & SOUNDER
 - SMOKE DETECTOR
 - SMOKE DETECTOR WITH SOUNDER
 - SMOKE DETECTOR WITH BEACON & SOUNDER
 - EVACUATION ALERT SOUNDER

- TYPICAL FLATS LEGEND:**
- H/L HIGH LEVEL
 - L/L LOW LEVEL
 - F/A FROM ABOVE
 - F/B FROM BELOW
 - T/E TO ABOVE
 - T/B TO BELOW
 - F&R FLOW & RETURN
 - DHWSF DOMESTIC HOT WATER SERVICE
 - BCWS BOOSTED COLD WATER SERVICE
 - MCWS MAINS COLD WATER SERVICE
 - CAT 5 CAT 5 BOOSTED COLD WATER SERVICE
 - LTHW LOW TEMPERATURE HOT WATER
 - SK SINK
 - WHE WASH HAND BASIN
 - WC TOILET
 - SH- SHOWER
 - BT BATH
 - AF ACCESS PANEL
 - EPH ELECTRIC PANEL HEATER
 - TMV THERMOSTATIC MIXING VALVE
 - WM WASHING MACHINE
 - DW DISH WASHER
 - FR FRIDGE
 - EX EXTRACTOR FAN
 - Ov OVEN
 - HE HOB

- HIGH LEVEL PIPEWORK
- LOW LEVEL PIPEWORK
- BOOSTED COLD WATER SERVICE PIPEWORK
- DOMESTIC HOT WATER SERVICE PIPEWORK
- HEATING PIPEWORK
- SPRINKLER PIPEWORK
- SPRINKLER HEAD
- ELECTRIC TOWEL RAIL
- SUPPLY DUCT
- RETURN DUCT
- FRESH AIR DUCT
- EXHAUST DUCT
- ISOLATION VALVE
- PENUM BOX
- MVHR UNIT
- CIRCULAR EXTRACT GRILLE
- CIRCULAR SUPPLY GRILLE

NOTES:

- SPRINKLER LAYOUT INDICATIVE ONLY. SPRINKLER DESIGN IS TO BE COMPLETED BY SPECIALIST INCLUDING PIPE SIZING
- ALL WASH HAND BASINS, BATHS & SHOWERS TO INCLUDE THERMOSTATIC MIXING VALVES TO AVOID SCALDING.

T01 TENDER	WB	10/11/23
P01 PRELIMINARY	WB	10/10/23
Rev.	Amendment	Initial Date

Synergy
CONSULTING ENGINEERS
Sustainable Mechanical, Electrical and Public Health Building Services
8-14 St Pancras Way, 1 Canal Side Studios, London NW1 0QD
Tel: 020 7529 8950 Fax: 020 7380 5112 Email: info@synergymech.co.uk Web: www.synergymech.co.uk

Client
Precis Advisory/
Access Self Storage

Project
Acorn House
314-320 Grays Inn Rd, London
WC1X 8DP

Drawing Title
Typical Apartment Type D2

Scale(s)	1 : 50 @ A0				
Drawn Date	08/10/23	Initial	BW/AM	Approved	AF
Job Number	08580	Status	S4-For Tender		
Purpose of Issue	TENDER				