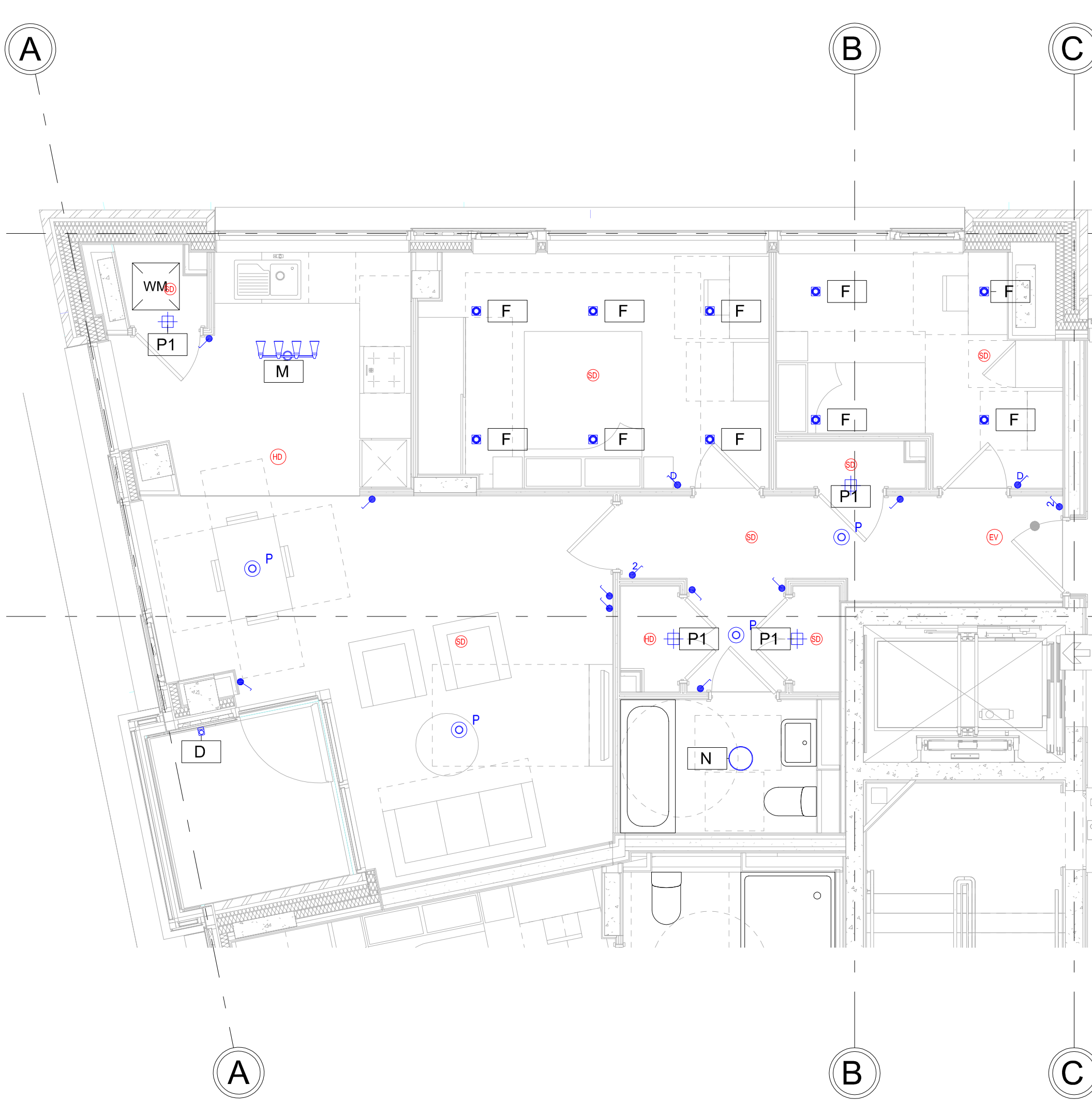
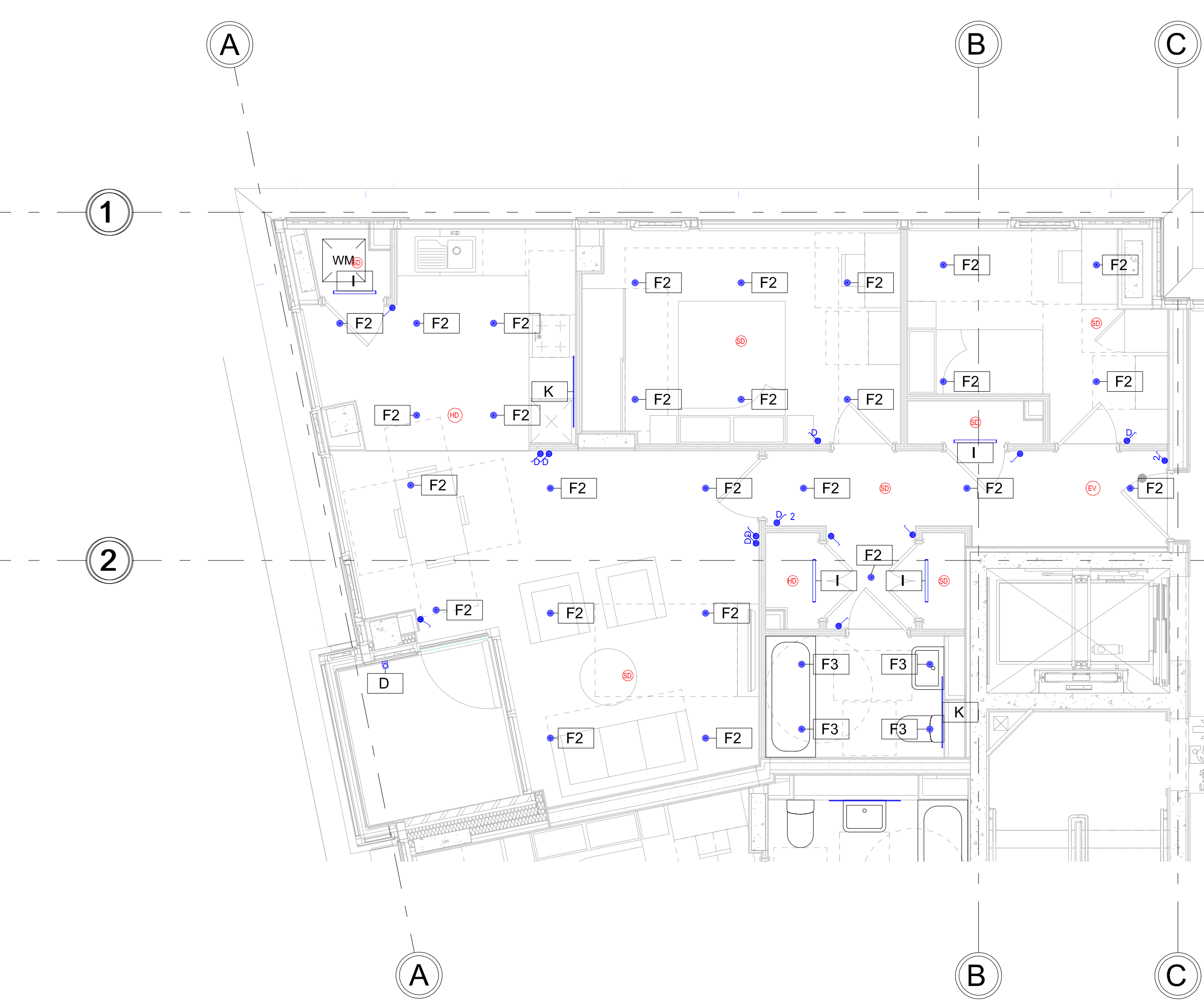


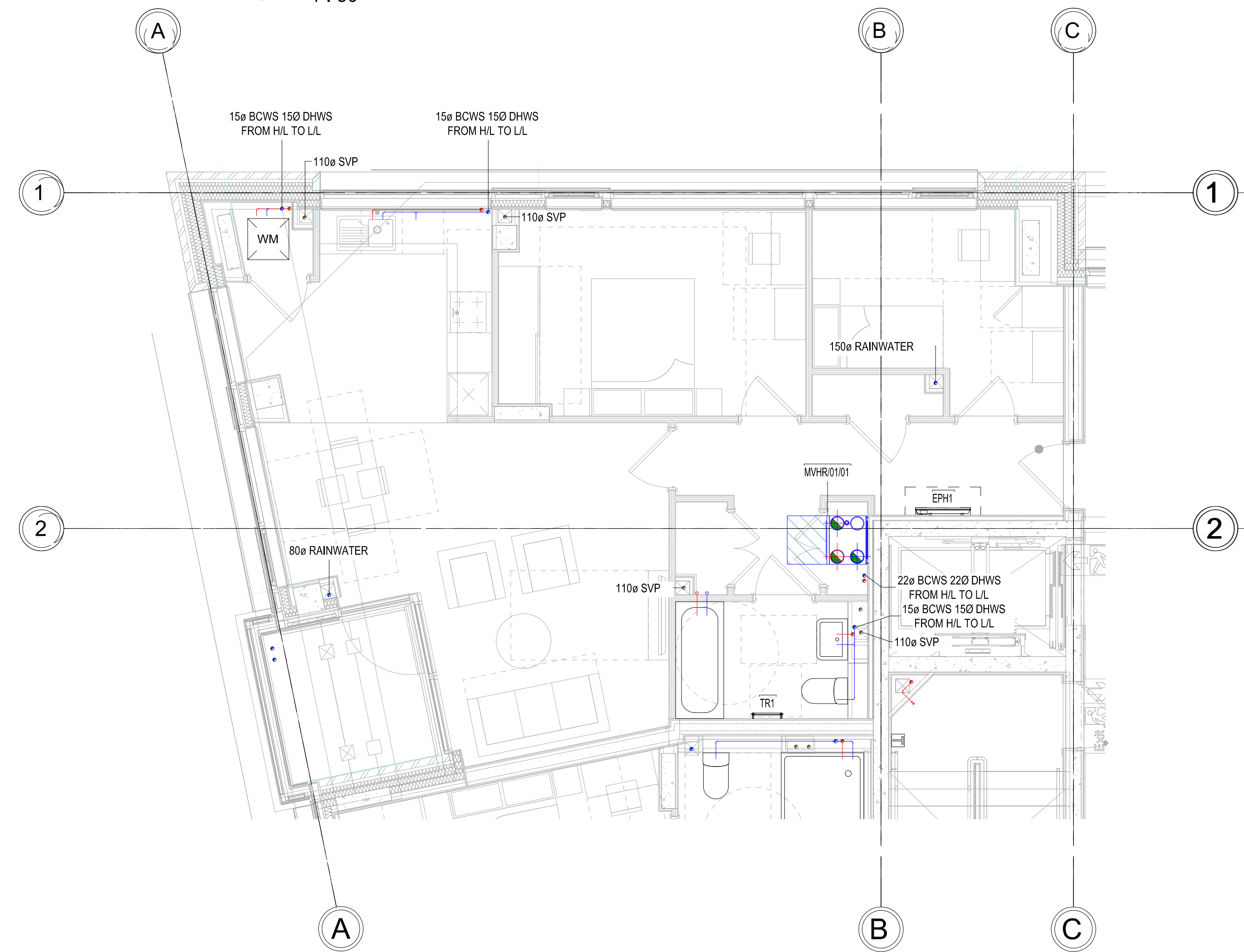
01 - Typical Apartment Type C - H/L
1 : 50



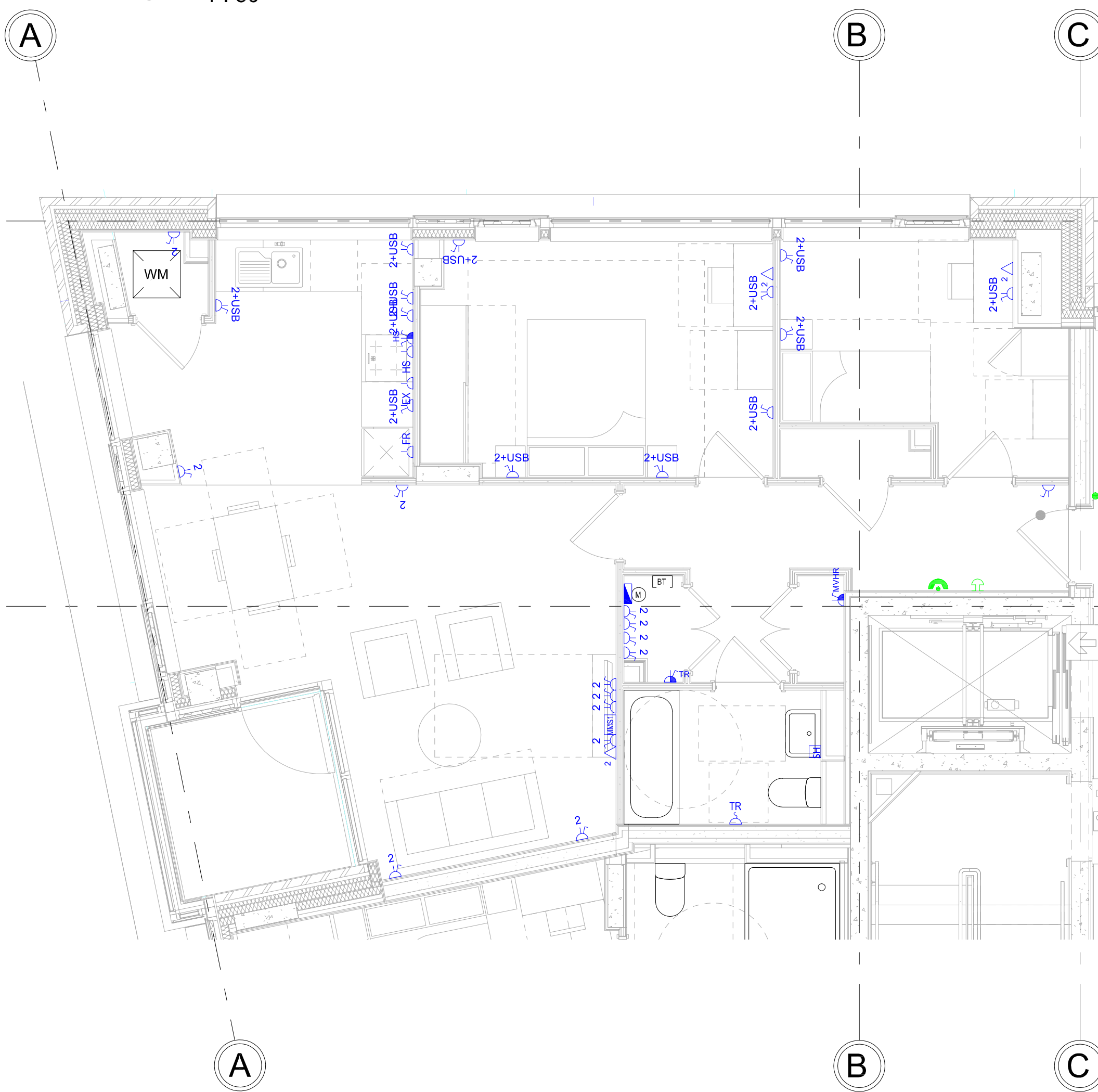
01 - Typical Apartment Type C - Affordable Rent -
Lighting and FA
1 : 50



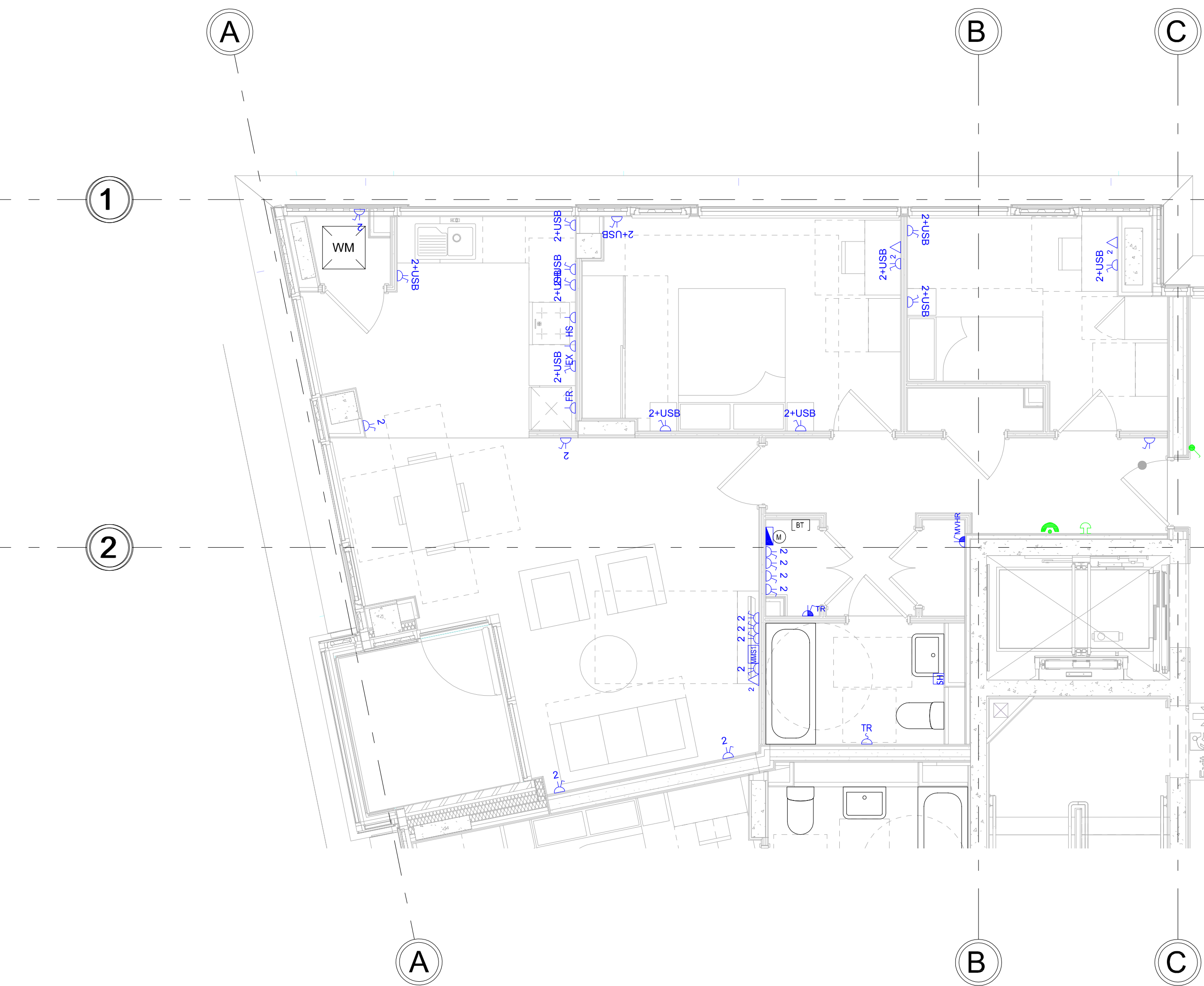
06 - Typical Apartment Type C - Intermediate Rent -
Lighting and FA
1 : 50



01 - Typical Apartment Type C - L/L
1 : 50



01 - Typical Apartment Type C - Affordable Rent - Small
Power and AC
1 : 50



06 - Typical Apartment Type C - Intermediate Rent -
Small Power and AC
1 : 50

TYPICAL ELECTRIC LEGEND:

- | | | | |
|------|------------------------------------------------------------------------|----|--------------------------------------|
| BED | BED HEAD CONTROL | OR | DOOR BELL |
| BT | BT SERVICES | OR | CCTV CAMERA |
| DA | DOOR ASSIST | OR | EMERGENCY OVERRIDE BUTTON |
| DW | DISH WASHER | OR | PUSH TO EGRESS BUTTON |
| EX | EXTRACTOR FAN | OR | CARD READER ACCESS |
| FR | FRIDGE | OR | INTERCOM |
| HS | COOKER CONNECTION | OR | DOOR BELL SWITCH |
| MVHR | MECHANICAL VENTILATION RECOVERY | OR | VIDEO ENTRY PANEL |
| PH | PANEL HEATER | OR | VIDEO ENTRY HANDSET |
| TR | TOWEL RAIL | OR | FIREMAN SWITCH |
| WM | WASHING MACHINE | OR | ORLIGHT TOWER 2 |
| 1 | SINGLE UN-SWITCHED SOCKET OUTLET | OR | ORLIGHT 6009 |
| 2 | SINGLE SWITCHED SOCKET OUTLET | OR | ORLIGHT 6009 IP44 |
| 3 | TWIN UN-SWITCHED SOCKET OUTLET | OR | ORLIGHT HOXTON-BR-E27 |
| 4 | TWIN SWITCHED SOCKET OUTLET | OR | XAL STRETTA SURFACE |
| 5 | SINGLE UN-SWITCHED FUSED SPUR | OR | ORLIGHT 1009 SURFACE 85 |
| 6 | SINGLE SWITCHED FUSED SPUR | OR | ORLIGHT IP65 RATED LED STRIP |
| 7 | CONSUMER UNIT | OR | ASTRO KOTO FOUR BAR |
| 8 | 1 PHASE ELECTRIC METER | OR | SYLVANIA GLOTTO 305 |
| 9 | SINGLE DATA OUTLET (WIFI-WIFI SOCKET) | OR | SCHNEIDER BATTEN HOLDER |
| 10 | SHOWER SOCKET | OR | 10 SCHNEIDER PENDANT |
| 11 | GRID SWITCH | OR | 16ANG 2 WAY SWITCH |
| 12 | QUADRAPLEX OUTLET WITH 2 DOUBLE SOCKETS, DATA POINT, 2X SAT, TV, FMDAB | OR | 26ANG 1 WAY SWITCH |
| 13 | 1 DOUBLE SOCKET, DATA POINT, TV OUTLET (TV, FMDAB) | OR | INTERMEDIATE SWITCH |
| 14 | | OR | DIMMER SWITCH |
| 15 | | OR | STROBE BEACON WITH SOUNDER |
| 16 | | OR | FIRE ALARM INTERFACE |
| 17 | | OR | HEAT DETECTOR |
| 18 | | OR | HEAT DETECTOR WITH SOUNDER |
| 19 | | OR | HEAT DETECTOR WITH BEACON & SOUNDER |
| 20 | | OR | SMOKE DETECTOR |
| 21 | | OR | SMOKE DETECTOR WITH SOUNDER |
| 22 | | OR | SMOKE DETECTOR WITH BEACON & SOUNDER |

Notes
It is the responsibility of the person reading this drawing to establish that they are using the most current version including all other documents produced either by Synergy Consulting Engineers or by any other parties to the project.
IF IN ANY DOUBT - ASK !
No scaling permitted from this drawing.
This drawing is copyright. ©

S4-For Tender

- TYPICAL FLATS LEGEND:
- | | | | |
|-------|----------------------------------|-----|-------------------------------------|
| HL | HIGH LEVEL | --- | HIGH LEVEL PIPEWORK |
| LL | LOW LEVEL | --- | LOW LEVEL PIPEWORK |
| FA | FROM ABOVE | --- | BOOSTED COLD WATER SERVICE PIPEWORK |
| FIB | FROM BELOW | --- | DOMESTIC HOT WATER SERVICE PIPEWORK |
| TE | TO BELOW | --- | HEATING PIPEWORK |
| T/A | TO ABOVE | --- | SPRINKLER PIPEWORK |
| F&R | FLOW & RETURN | --- | SPRINKLER HEAD |
| DHWS | DOMESTIC HOT WATER SERVICE | --- | ELECTRIC PANEL HEATER |
| BCWS | BOOSTED COLD WATER SERVICE | --- | ELECTRIC TOWEL RAIL |
| MOWS | MAINS COLD WATER SERVICE | --- | SUPPLY DUCT |
| CAT 5 | CAT 5 BOOSTED COLD WATER SERVICE | --- | RETURN DUCT |
| LTHW | LOW TEMPERATURE HOT WATER | --- | FRESH AIR DUCT |
| SK | SINK | --- | EXHAUST DUCT |
| WHE | WASH HAND BASIN | --- | ISOLATION VALVE |
| WC | TOILET | --- | PENUM BOX |
| SH | SHOWER | --- | MVHR UNIT |
| BT | BATH | --- | CIRCULAR EXTRACT GRILLE |
| AP | ACCESS PANEL | --- | CIRCULAR SUPPLY GRILLE |
| EPH | ELECTRIC PANEL HEATER | --- | |
| TMV | THERMOSTATIC MIXING VALVE | --- | |
| WM | WASHING MACHINE | --- | |
| DW | DISH WASHER | --- | |
| FR | FRIDGE | --- | |
| EX | EXTRACTOR | --- | |
| Ov | OVEN | --- | |
| HOB | HOB | --- | |

NOTES:
- SPRINKLER LAYOUT INDICATIVE ONLY. SPRINKLER DESIGN IS TO BE COMPLETED BY SPECIALIST INCLUDING PIPE SIZING
- ALL WASH HAND BASINS, BATHS & SHOWERS TO INCLUDE THERMOSTATIC MIXING VALVES TO AVOID SCALDING.

T01	TENDER	WB	10/11/23
P01	PRELIMINARY	WB	10/10/23
Rev.	Amendment	Initial	Date

Synergy
CONSULTING ENGINEERS
Sustainable Mechanical, Electrical and Public Health Building Services
8-14 St Pancras Way, 1 Canal Side Studios, London NW1 0QS
Tel: 020 7529 8950 Fax: 020 7380 5312 Email: info@synergymech.co.uk Web: www.synergymech.co.uk

Client
Precis Advisory/
Access Self Storage

Project
Acorn House
314-320 Grays Inn Rd, London
WC1X 8DP

Drawing Title
Typical Apartment Type C

Scale(s)	1 : 50 @ A0		
Drawn Date	08/10/23	Initial	BW/AM Approved AF
Job Number	08580	Status	S4-For Tender
Purpose of Issue	TENDER		