

Demolition Scope of Works

- Dumbwaiters as approved and installed as part of the base build consented scheme to be removed.
- Stud partitions and doors as approved and installed as part of the base build consented scheme, to be removed to allow for alterations to the basement Back of House and ancillary spaces.
- Bike storage rack to be removed to enable connection between Camden Centre Back of House and B.11. (Note: quantity of bike storage provision will not fall below planning condition requirement of 62 spaces). Rearrangement of racks to suit new layout.
- New builders works holes to be formed in slab to allow for services risers from basement to serve the Camden Centre with high level openings in masonry walls above ceiling line for horizontal distribution.
- Internal door to be removed to allow for acoustic upgrade.
- Partition to be removed to allow for back stage alterations.
- Minor alterations to stair arrangement of newly formed gallery platform
- Alterations to historic ceiling to allow for AV/Lighting rigging installation. 600x600mm openings formed for installing structural supports into L03 slab and services infrastructure - ceiling reinstated to match existing with 150mm diameter flush finished cover plates introduced
- Removal of non-original proscenium arch
- Removal of non-original glitter ball
- Removal and reconfiguration of terrazzo cubicle partitions to increase WC capacity. Terrazzo partitions to be reinstated where possible
- Column encasement removed and steel work treated for fire protection.
- Original walls demolished / doors removed and relocated for revised Back of House arrangement
- Consented but not built - Tonbridge Walk entrance lobby stairs, platform and screen arrangement to be revised
- Decorative soffit mouldings to be taken down and reinstated below new lowered bulkhead introduced for supply air distribution slot grille
- Section of ceiling to be taken down for installation of ventilation ductwork with new ceiling installed
- Portable timber stairs to be removed and stored on site
- Consented but not built - raised handrail design to be revised
- 50mm slot cut into masonry for supply air distribution
- New door opening from lobby G.44 into Stair A to match opening into Stair B
- Non-original door removed and opening in non-original partition enlarged

Notes:

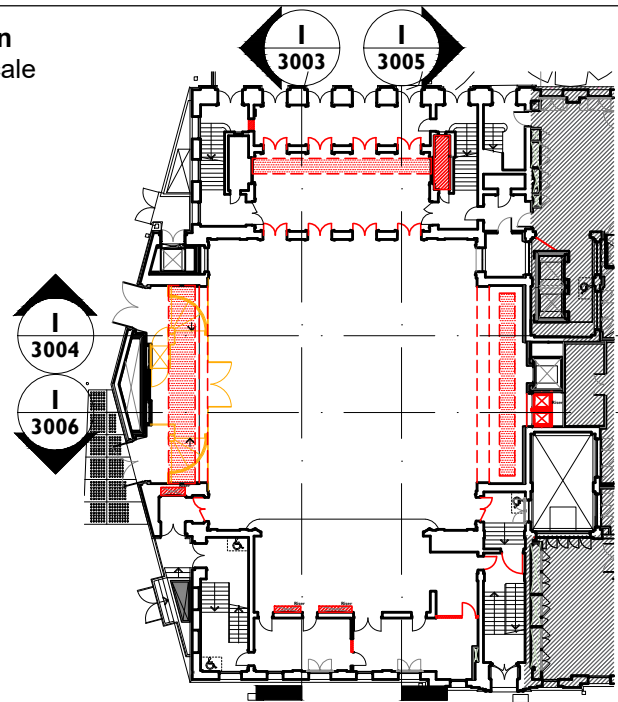
Drawings are based on survey data and may not accurately represent what is physically present.

All dimensions are to be verified on site before proceeding with the work.

All dimensions are in millimetres unless noted otherwise.

Purcell shall be notified in writing of any discrepancies.

Key Plan
not to scale



Proposed Works Key

- Proposed Element
- Demolition Element
- Demolition Overhead
- Consented but not built
- Temporary Element
- Area not included within application
- Window Number
- Door Number

C01	02.02.24	TF	OB	First Issue
REV	DATE	BY	CHK	DESCRIPTION

CLIENT

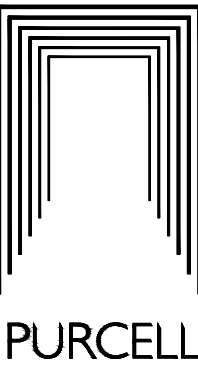
Il Bottaccio

PROJECT

Camden Town Hall Tenant Fitout

JOB NUMBER

242931



TITLE

DEMOLITION CAMDEN CENTRE ELEVATION 1

SIZE
A1L

SCALE
1:50

REV

C01

SUITABILITY/REASON FOR ISSUE

A3 - Spatial Coordination Approved

DRAWING NUMBER

242931-PUR-01-ZZ-DR-A-3003

1
3003

DEMOLITION CAMDEN CENTRE ELEVATION 1
1:50 @ A1

