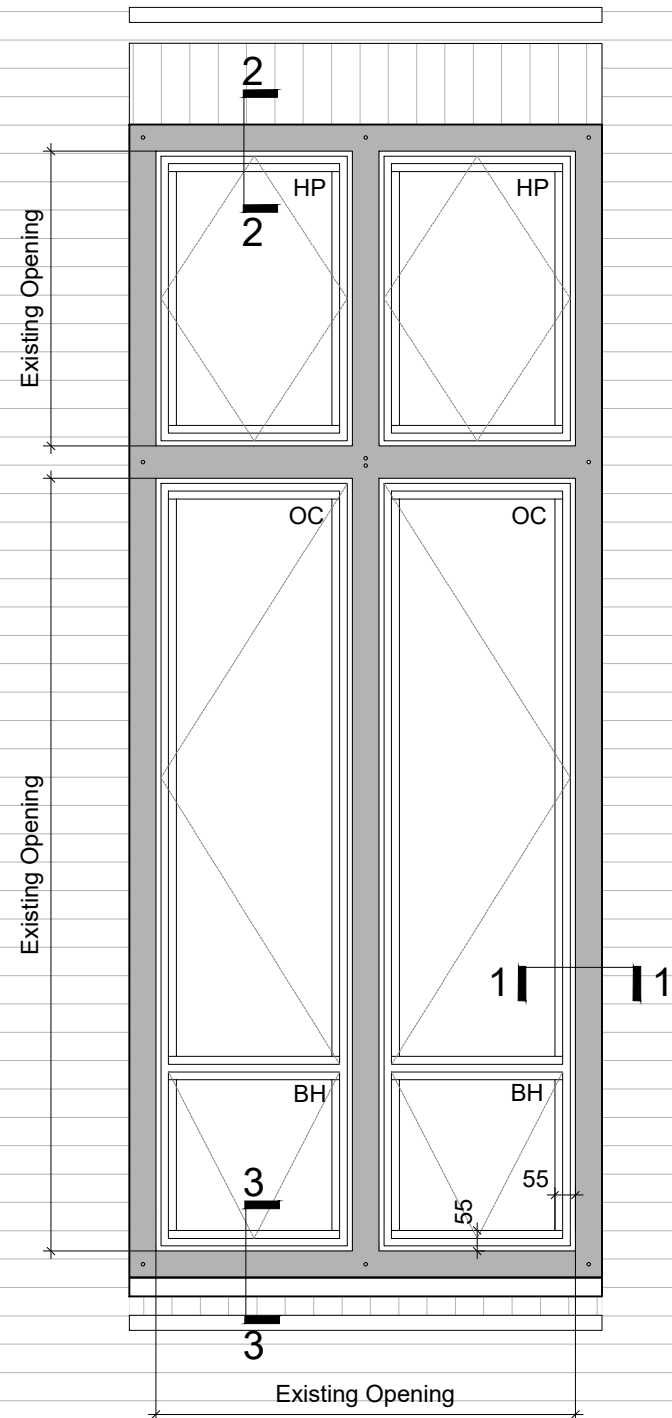


1. WINDOW TYPE 12



2. WINDOW TYPE 13

KEY:

FG = Fixed glazed unit

OC = Outward Opening Casement

BH = Bottom Hung Inward Opening Casement

HP = Horizontal Pivot Casement

Timber Frame - Restore and repair

Refer to drawing 3100 for typical window details.

DRAWING NOTES

1. filename: 788-RVCHB-4101-Window Types.dwg

2. Do not scale this drawing in either paper or digital form. Use figured dimensions only. Detailed site survey to be carried out to establish tolerances. Figured dimensions are in mm. All dimensions shall be verified on site before proceeding with the work. The architect shall be notified of any discrepancies.

3. This drawing has been produced for sole use on this project and is not intended for use by any other person or for any other purpose. © Copyright RSS (U.K.)

4. All printed copies should be made at 100% of the original page size. Use scale bars, where included, to check that the drawing has been printed to the intended scale as identified in the drawing title block.

5. This drawing is not intended for construction unless specifically described as such.

REVISIONS

REV DATE STATUS  
PL01 02.02.24 For Planning

Changes since last issue:

-

28 NAVIGATION ROAD LONDON E3 3TG  
T: 020 7739 8945  
E: rss@rssa.co.uk www.rivingtonstreetstudio.co.uk

rivingtonstreetstudio

job title Royal Veterinary College Hobday Building

drawing title Window Types Elevations

drawn by LA job no. 1058 suitability S4 revision PL01

scale 1:20@A3

PROJECT	ORIGIN.	VOLUME	LEVEL	TYPE	ROLE	NUMBER
RVCHB_	RSS	_ZZ	_ZZ	_DR	_A	_4107