

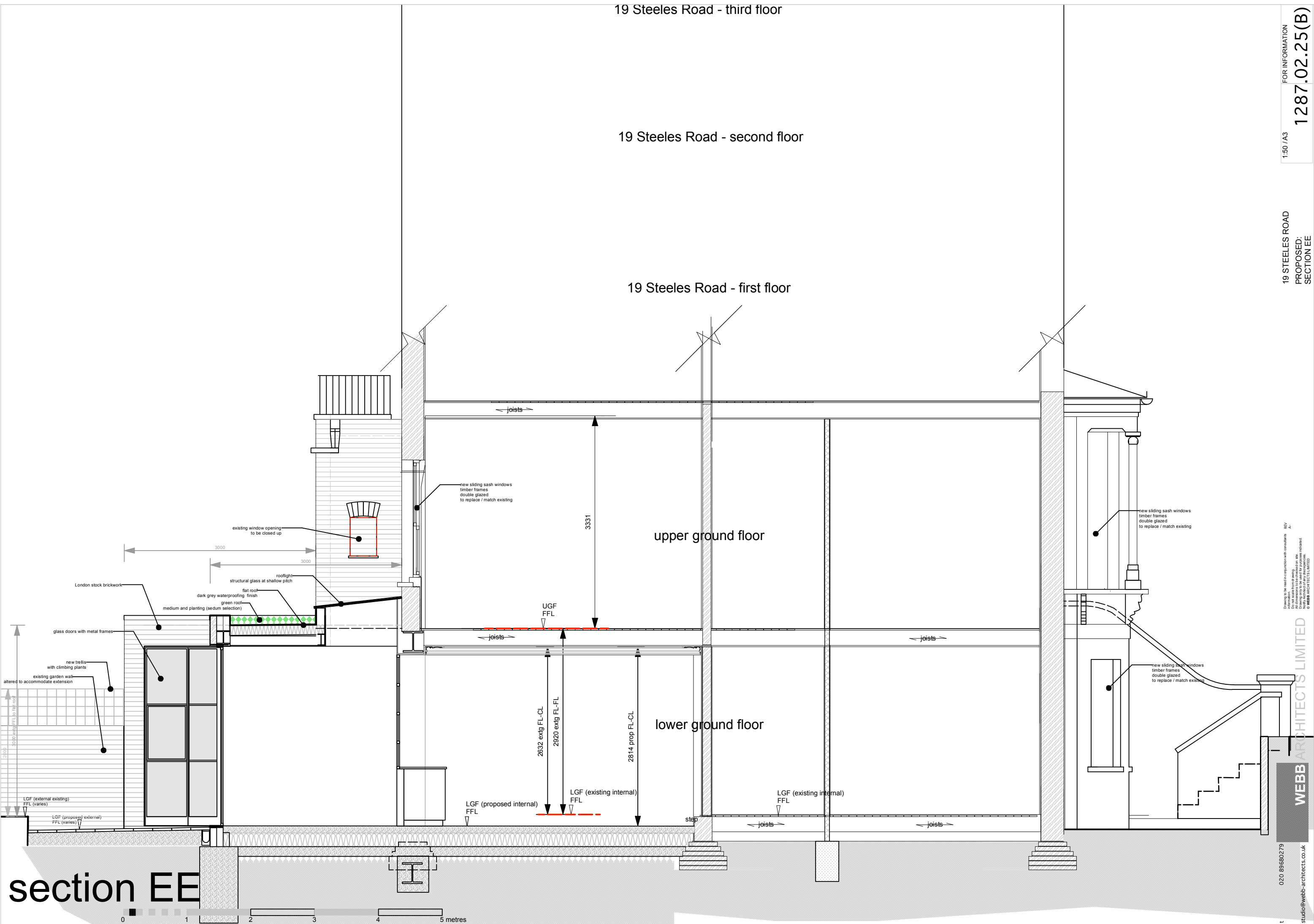
19 Steeles Road - third floor

19 Steeles Road - second floor

19 Steeles Road - first floor

FOR INFORMATION
1:50 / A3
1287.02.25(B)

19 STEELES ROAD
PROPOSED:
SECTION EE



section EE

Drawings to be used in conjunction with consultants' information. All dimensions to be checked on site. Copying, reuse or alteration without permission is prohibited. © WEBB ARCHITECTS LIMITED

WEBB ARCHITECTS LIMITED

020 89680279
studio@webb-architects.co.uk