

Legend:

Supply Ductwork

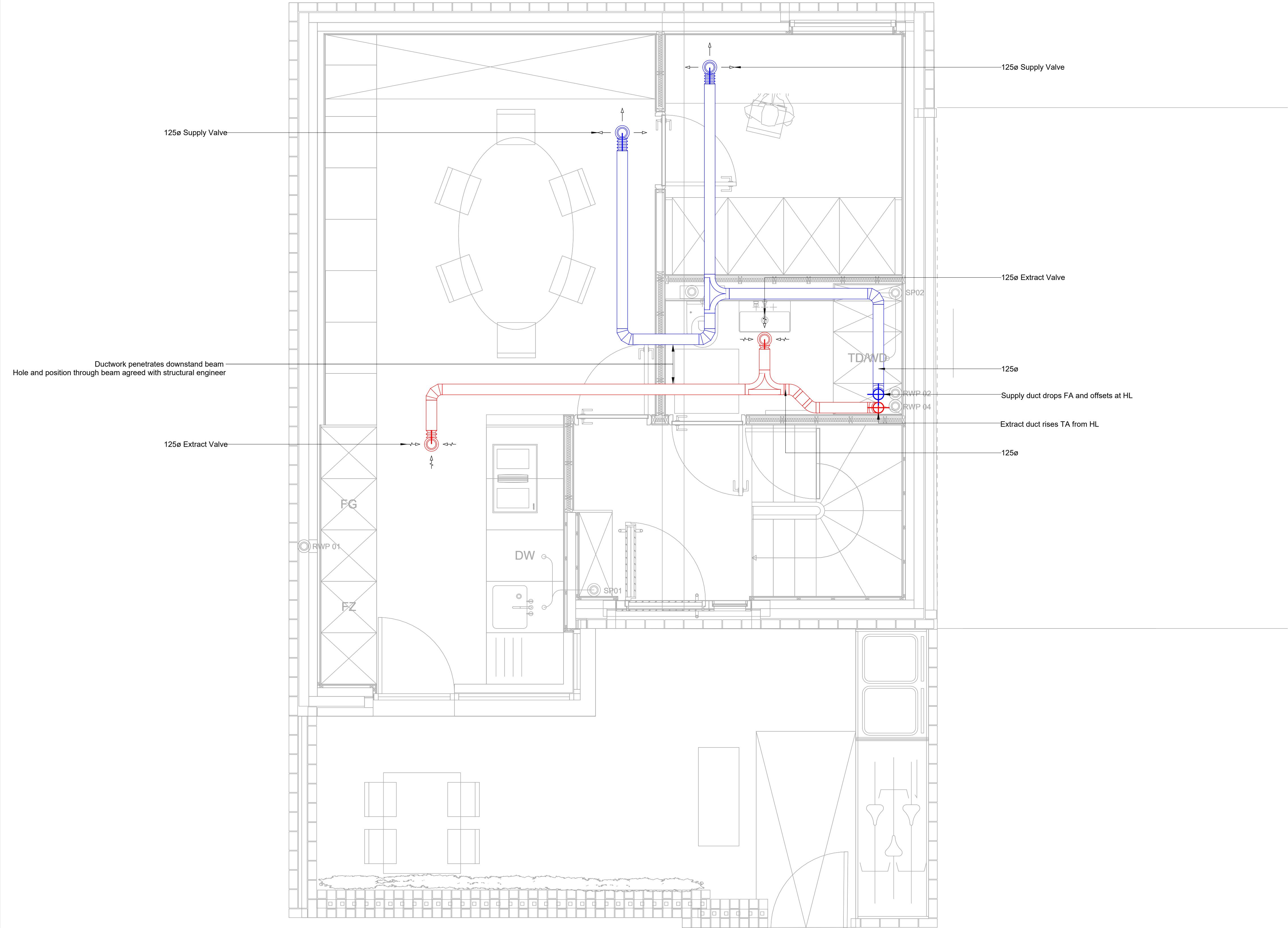
Extract Ductwork

Intake Ductwork

Exhaust Ductwork

Notes

1. Please read in conjunction with all Mesh information
2. Intake and exhaust ducts to be thermally insulated
3. Volume control dampers required to balance the system
4. TA - To Above
TB - To Below
FA - From Above
FB - From Below
HL - High Level
LL - Low Level



1	REVISED TENDER ISSUE	13/11/2023	IP	JB
0	TENDER ISSUE	06/11/2023	IP	JB
A	DRAFT FOR COMMENT	08/08/2023	IP	JB
REV	DESCRIPTION	DATE	DRAWN	CHKD

mesh.

DRAWN	13/11/2023	IP
CHECK	13/11/2023	JB
APPROVED	13/11/2023	JB
ISSUED	13/11/2023	IP
REVISION	1	
CONTRACT NO	23-0102	

1A Regency Lawn	
Ground Floor - Ventilation Layout	
SCALE 1 : 25	SIZE A1
DWG NO 23-0102 - 02 - 001	

Legend:

Supply Ductwork

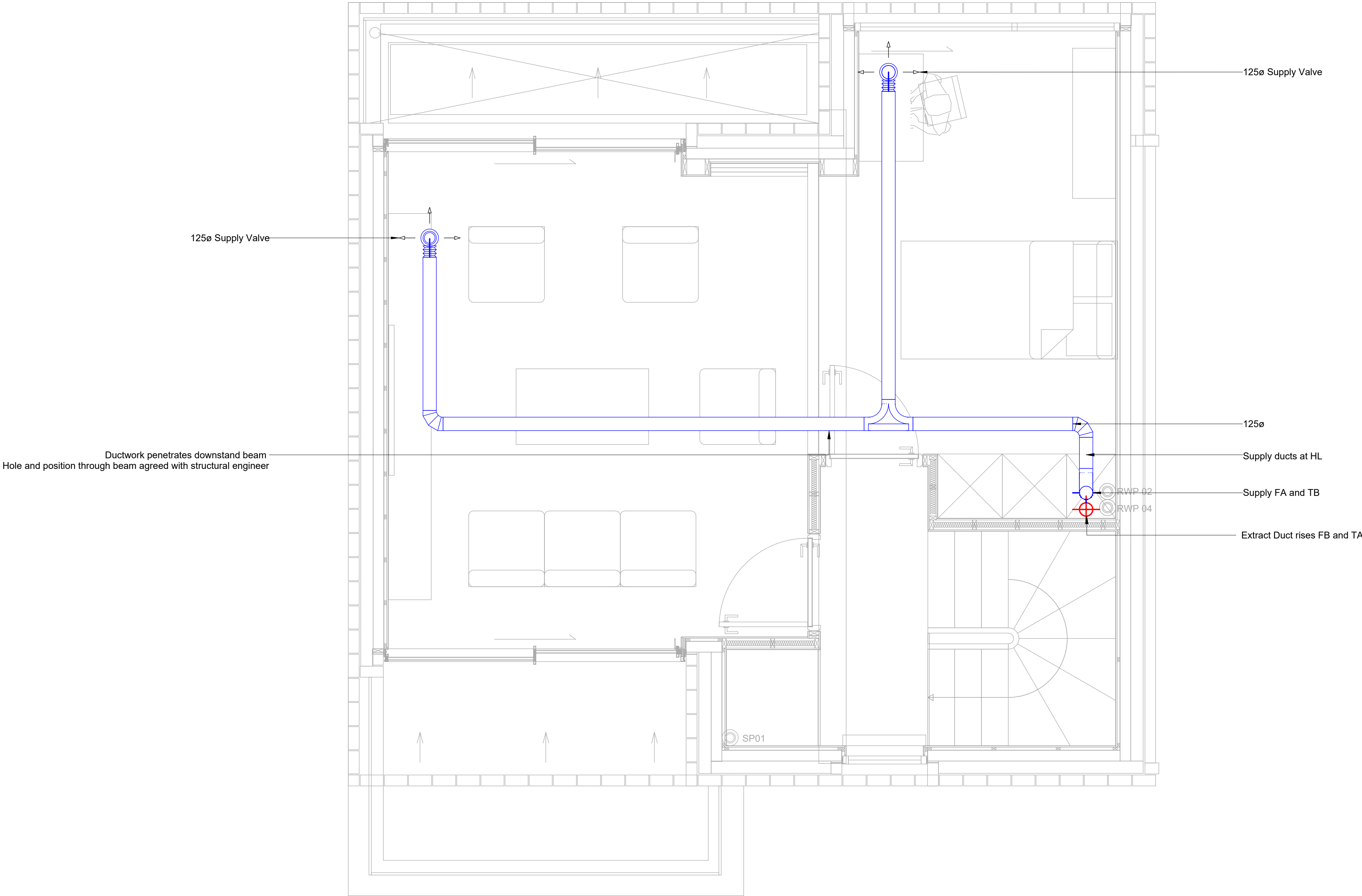
Extract Ductwork

Intake Ductwork

Exhaust Ductwork

Notes

1. Please read in conjunction with all Mesh information
2. Intake and exhaust ducts to be thermally insulated
3. Volume control dampers required to balance the system
4. TA - To Above
TB - To Below
FA - From Above
FB - From Below
HL - High Level
LL - Low Level



1	REVISED TENDER ISSUE	13/11/2023	IP	JB
0	TENDER ISSUE	06/11/2023	IP	JB
A	DRAFT FOR COMMENT	08/08/2023	IP	JB
REV	DESCRIPTION	DATE	DRAWN	CHKD

mesh.

DRAWN	13/11/2023	IP
CHECK	13/11/2023	JB
APPROVED	13/11/2023	JB
ISSUED	13/11/2023	IP
REVISION	1	
CONTRACT NO	23-0102	

1A Regency Lawn	
First Floor - Ventilation Layout	
SCALE 1 : 25	SIZE A1
DWG NO 23-0102 - 02 - 002	

Legend:

Supply Ductwork

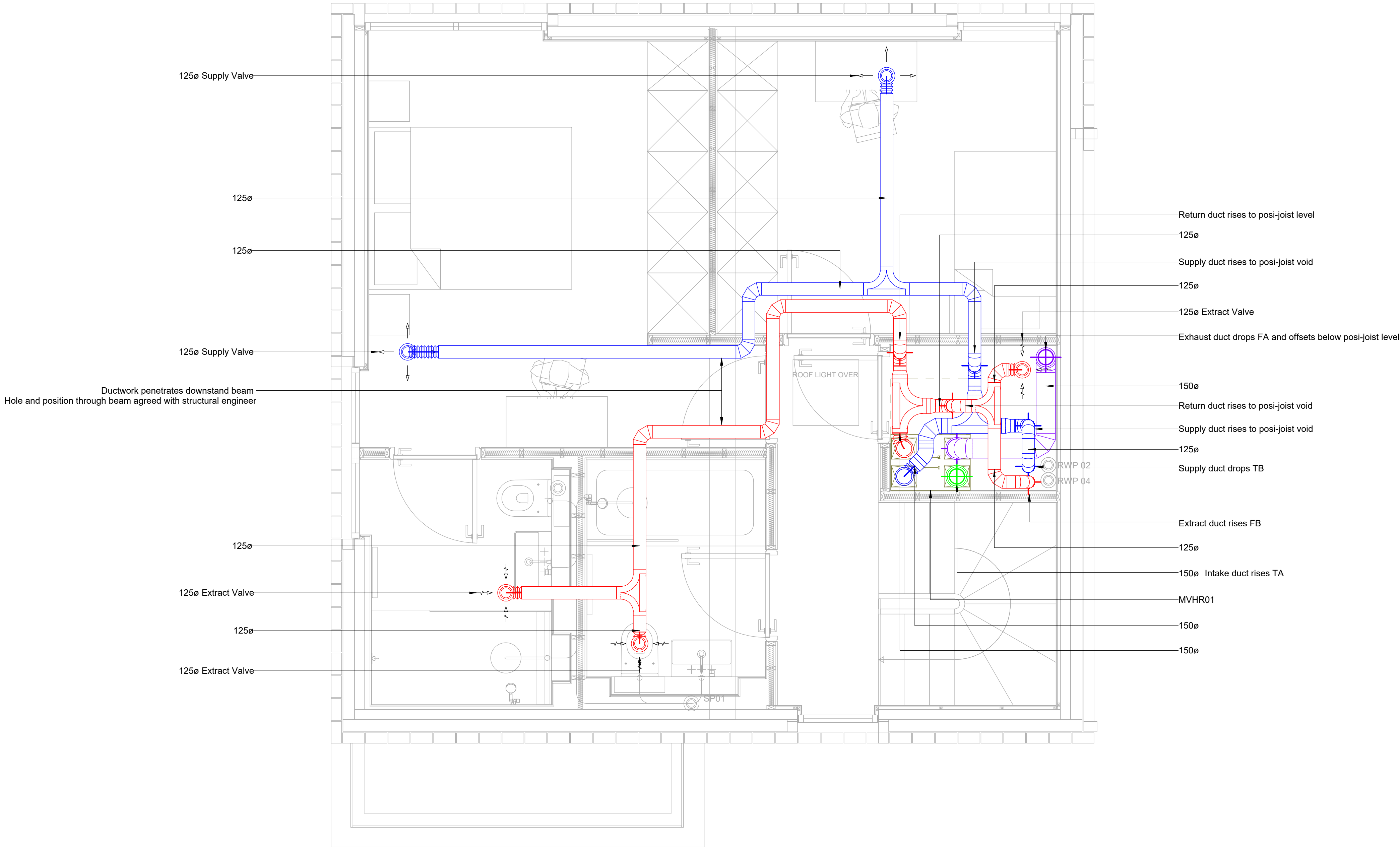
Extract Ductwork

Intake Ductwork

Exhaust Ductwork

Notes

1. Please read in conjunction with all Mesh information
2. Intake and exhaust ducts to be thermally insulated
3. Volume control dampers required to balance the system
4. TA - To Above
TB - To Below
FA - From Above
FB - From Below
HL - High Level
LL - Low Level



2	REVISED TENDER ISSUE	11/12/2023	IP	JB
1	REVISED TENDER ISSUE	13/11/2023	IP	JB
0	TENDER ISSUE	06/11/2023	IP	JB
A	DRAFT FOR COMMENT	08/08/2023	IP	JB
REV	DESCRIPTION	DATE	DRAWN	CHKD

mesh.

DRAWN	11/12/2023	IP	1A Regency Lawn Second Floor - Ventilation Layout	
CHECK	11/12/2023	JB		
APPROVED	11/12/2023	JB		
ISSUED	11/12/2023	IP		
REVISION	2		SCALE 1 : 25	SIZE A1
CONTRACT NO	23-0102		DWG NO 23-0102 - 02 - 003	

Legend:

- Supply Ductwork
- Extract Ductwork
- Intake Ductwork
- Exhaust Ductwork

Notes

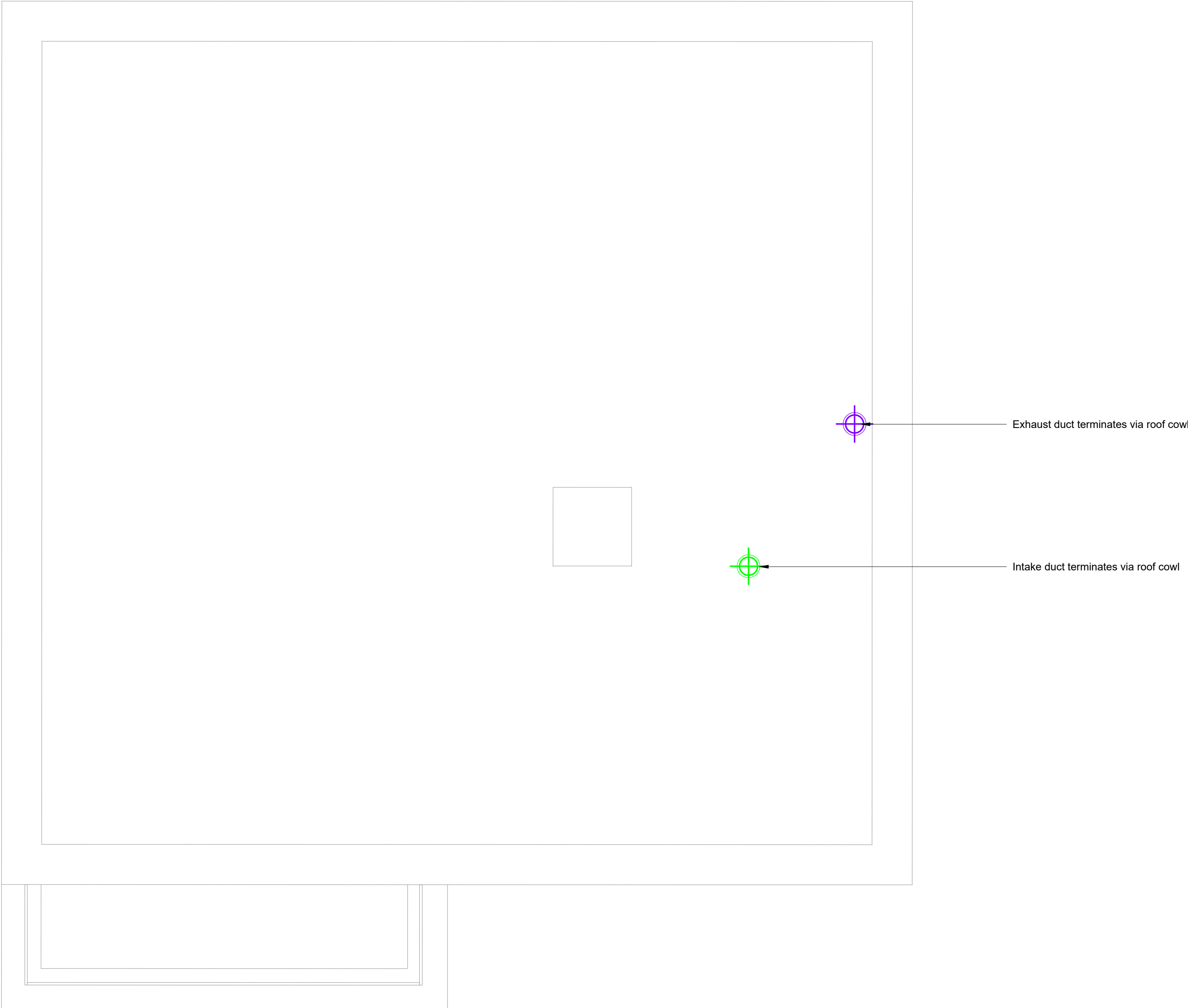
1.

Please read in conjunction with all Mesh information
2.

Intake and exhaust ducts to be thermally insulated
3.

Volume control dampers required to balance the system
4.

TA - To Above
TB - To Below
FA - From Above
FB - From Below
HL - High Level
LL - Low Level

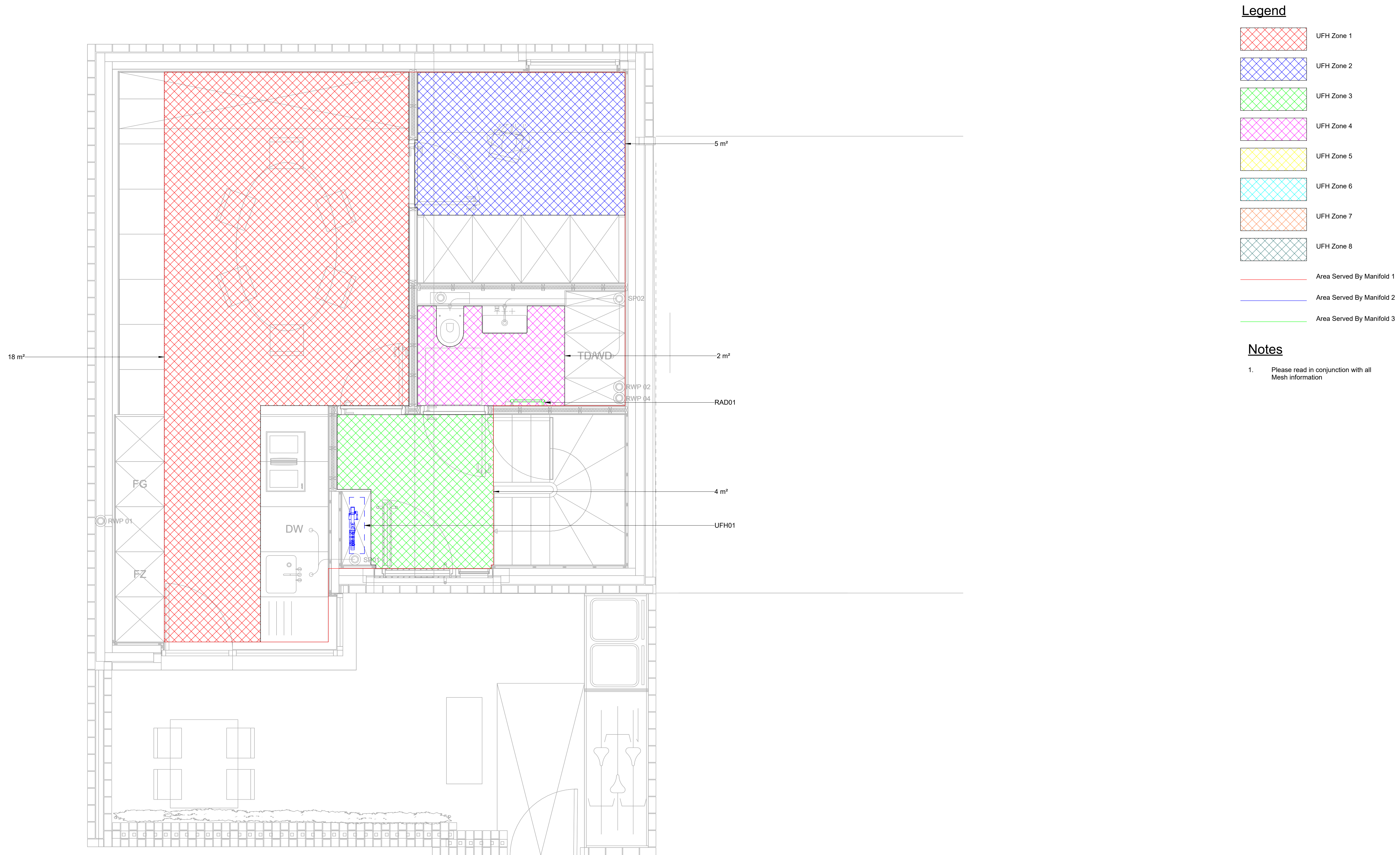


1	REVISED TENDER ISSUE	13/11/2023	IP	JB
0	TENDER ISSUE	06/11/2023	IP	JB
A	DRAFT FOR COMMENT	08/08/2023	IP	JB
REV	DESCRIPTION	DATE	DRAWN	CHKD

mesh.

DRAWN	13/11/2023	IP
CHECK	13/11/2023	JB
APPROVED	13/11/2023	JB
ISSUED	13/11/2023	IP
REVISION	1	
CONTRACT NO	23-0102	

1A Regency Lawn	
Roof Level - Ventilation Layout	
SCALE 1 : 25	SIZE A1
DWG NO 23-0102 - 02 - 004	

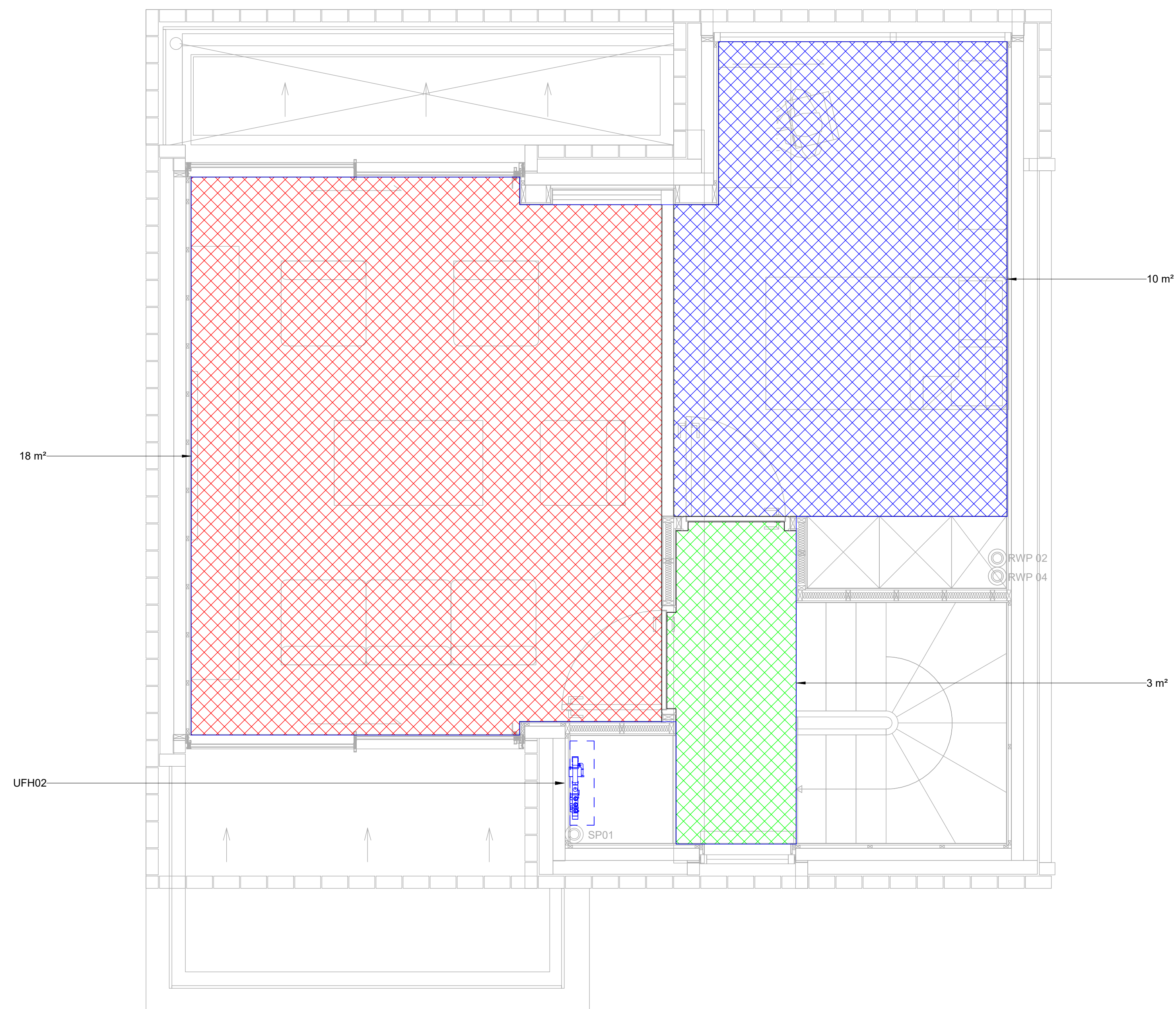


2	REVISED TENDER ISSUE	11/12/2023	IP	JB
1	REVISED TENDER ISSUE	13/11/2023	IP	JB
0	TENDER ISSUE	06/11/2023	IP	JB
A	DRAFT FOR COMMENT	08/08/2023	IP	JB
REV	DESCRIPTION	DATE	DRAWN	CHKD

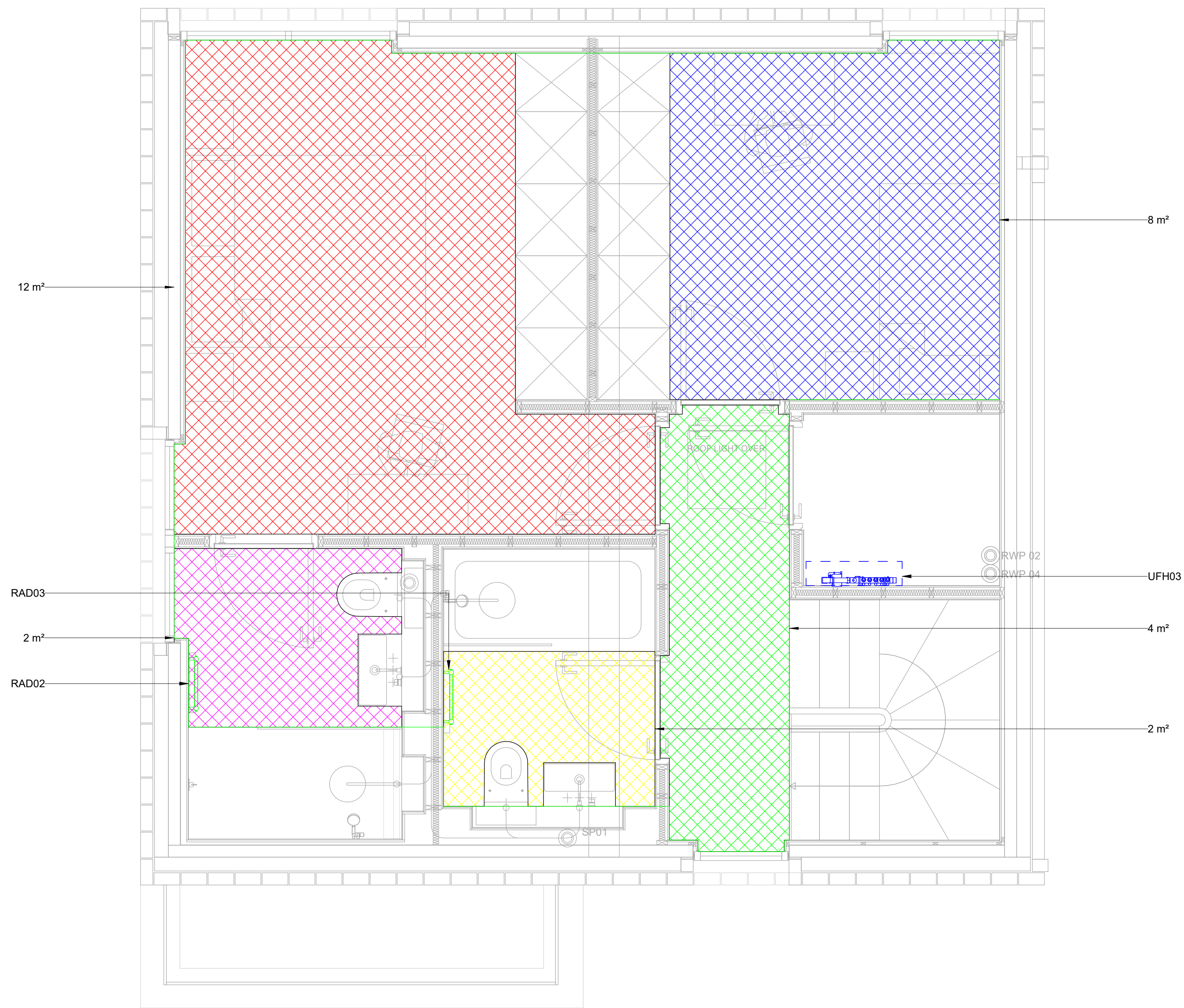


DRAWN	11/12/2023	IP
CHECK	11/12/2023	JB
APPROVED	11/12/2023	JB
ISSUED	11/12/2023	IP
REVISION	2	
CONTRACT NO	23-0102	

1A Regency Lawn	
Ground Floor - Space Heating Layout	
SCALE 1 : 25	SIZE A1
DWG NO 23-0102 - 03 - 001	



1A Regency Lawn	
First Floor - Space Heating Layout	
SCALE 1 : 25	SIZE A1
DWG NO 23-0102 - 03 - 002	



Legend

- UHF Zone 1
- UHF Zone 2
- UHF Zone 3
- UHF Zone 4
- UHF Zone 5
- UHF Zone 6
- UHF Zone 7
- UHF Zone 8
- Area Served By Manifold 1
- Area Served By Manifold 2
- Area Served By Manifold 3

Notes

- Please read in conjunction with all Mesh information

2	REVISED TENDER ISSUE	11/12/2023	IP	JB
1	REVISED TENDER ISSUE	13/11/2023	IP	JB
0	TENDER ISSUE	06/11/2023	IP	JB
A	DRAFT FOR COMMENT	08/08/2023	IP	JB
REV	DESCRIPTION	DATE	DRAWN	CHKD

mesh.

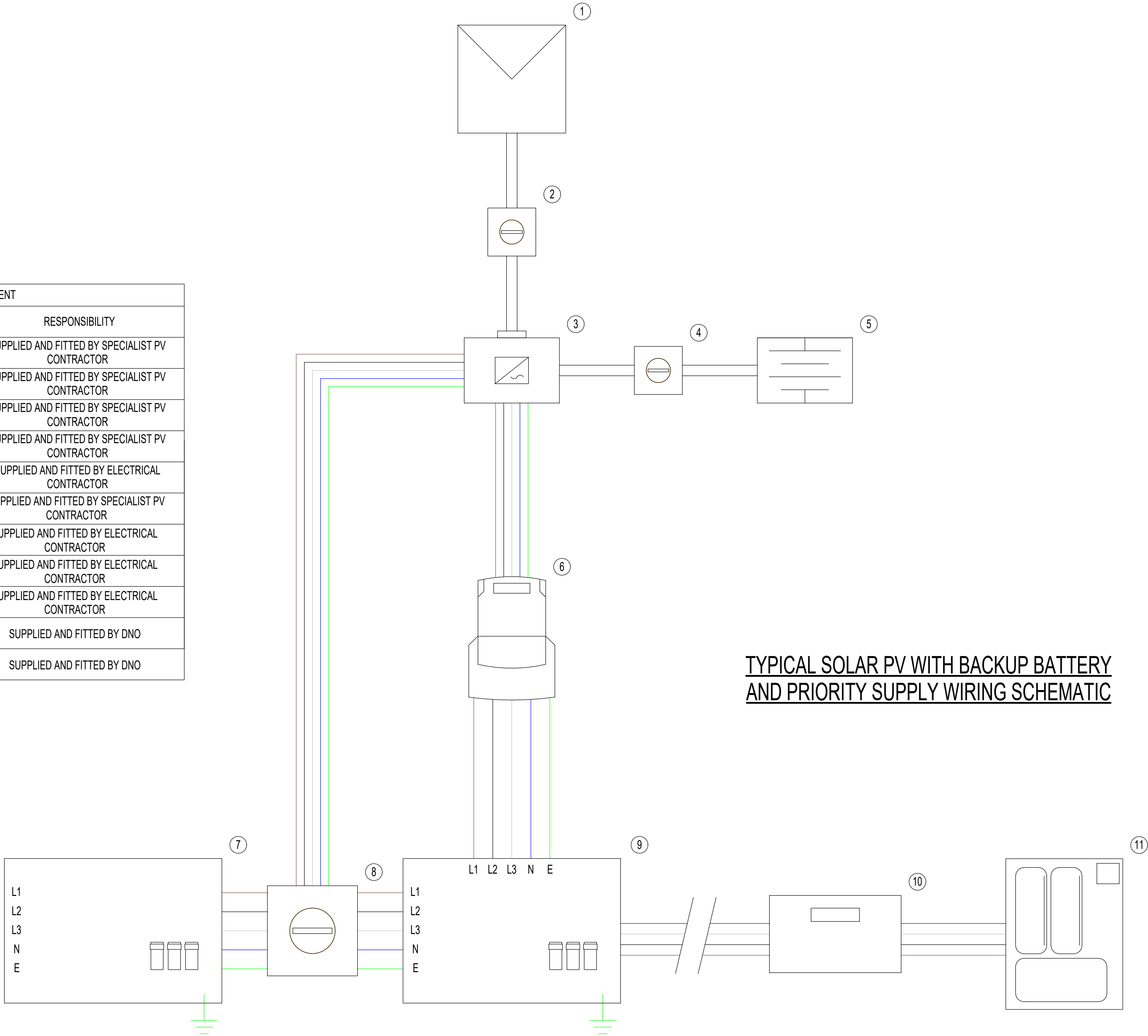
DRAWN	11/12/2023	IP
CHECK	11/12/2023	JB
APPROVED	11/12/2023	JB
ISSUED	11/12/2023	IP
REVISION	2	
CONTRACT NO	23-0102	

1A Regency Lawn	
Second Floor - Space Heating Layout	
SCALE 1 : 25	SIZE A1
DWG NO 23-0102 - 03 - 003	

Notes

1. Please read in conjunction with all Mesh information
2. Indicative PV and Battery schematic. Final installation schematic and operation to be by PV and battery contractor.

SOLAR PV SCHEDULE OF EQUIPMENT		
NO	SPECIFICATION	RESPONSIBILITY
1	SOLAR PV ARRAY	SUPPLIED AND FITTED BY SPECIALIST PV CONTRACTOR
2	DC ISOLATOR	SUPPLIED AND FITTED BY SPECIALIST PV CONTRACTOR
3	PV AC/DC INVERTER WITH BATTERY CONNECTION AND PRIORITY CIRCUIT	SUPPLIED AND FITTED BY SPECIALIST PV CONTRACTOR
4	BATTERY ISOLATOR	SUPPLIED AND FITTED BY SPECIALIST PV CONTRACTOR
5	LI-ION BATTERY ARRAY	SUPPLIED AND FITTED BY ELECTRICAL CONTRACTOR
6	OFGEM APPROVED GENERATION METER	SUPPLIED AND FITTED BY SPECIALIST PV CONTRACTOR
7	MINI-BOARD FOR PRIORITY CIRCUITS	SUPPLIED AND FITTED BY ELECTRICAL CONTRACTOR
8	MANUAL CHANGE OVER SWITCH (MINI-BOARD TO NORMALLY BE SUPPLIED BY PV INVERTER)	SUPPLIED AND FITTED BY ELECTRICAL CONTRACTOR
9	CONSUMER UNIT	SUPPLIED AND FITTED BY ELECTRICAL CONTRACTOR
10	UTILITY METER	SUPPLIED AND FITTED BY DNO
11	DNO's FUSED CUT-OUT	SUPPLIED AND FITTED BY DNO



TYPICAL SOLAR PV WITH BACKUP BATTERY
AND PRIORITY SUPPLY WIRING SCHEMATIC

0	TENDER ISSUE	06/11/2023	IP	JB
REV	DESCRIPTION	DATE	DRAWN	CHKD

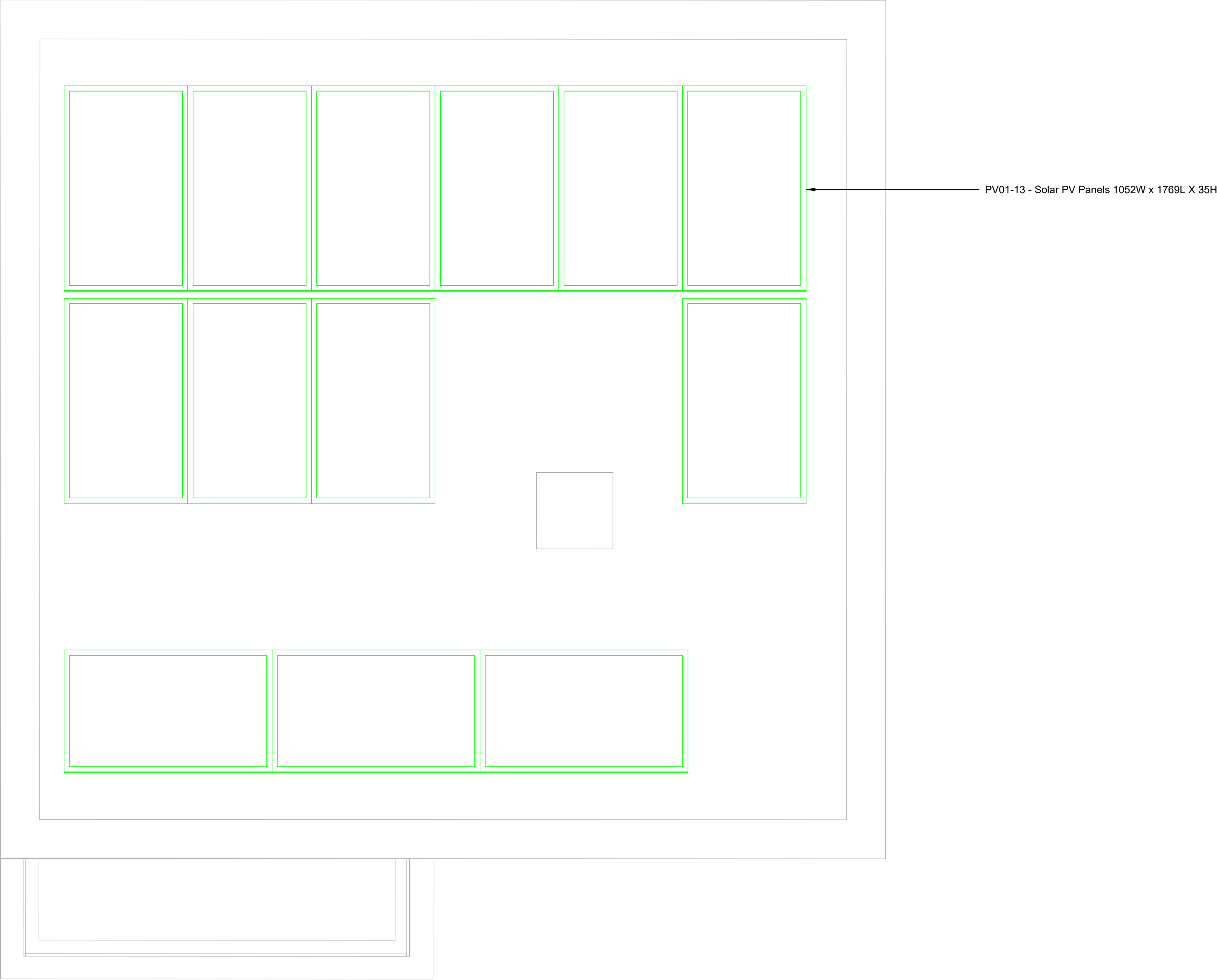
mesh.

DRAWN	06/11/2023	IP
CHECK	06/11/2023	JB
APPROVED	06/11/2023	JB
ISSUED	06/11/2023	IP
REVISION	0	
CONTRACT NO	23-0102	

1A Regency Lawn	
Indicative PV and Battery Schematic	
SCALE 1 : 25	SIZE A1
DWG NO 23-0102 - 04 - 000	

Notes

1. Please read in conjunction with all Mesh information



0	TENDER ISSUE	06/11/2023	IP	JB
A	DRAFT FOR COMMENT	08/08/2023	IP	JB
REV	DESCRIPTION	DATE	DRAWN	CHKD

mesh.

DRAWN	06/11/2023	IP
CHECK	06/11/2023	JB
APPROVED	06/11/2023	JB
ISSUED	06/11/2023	IP
REVISION	0	
CONTRACT NO	23-0102	

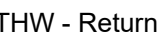
1A Regency Lawn	
Roof Level - PV Layout	
SCALE 1 : 25	SIZE A1
DWG NO 23-0102 - 04 - 001	

Notes

1. Please read in conjunction with all Mesh information
2. Indicative ASHP schematic, as provided by Ecoforest. Final installation schematic and operation to be by ASHP contractor.

					mesh.	DRAWN	06/11/2023	IP	1A Regency Lawn	
						CHECK	06/11/2023	JB	ASHP Schematic	
						APPROVED	06/11/2023	JB		
						ISSUED	06/11/2023	IP	SCALE	1 : 25
						REVISION	0		SIZE	A1
						CONTRACT NO	23-0102		DWG NO	
0	TENDER ISSUE	06/11/2023	IP	JB					23-0102 - 05 - 000	
REV	DESCRIPTION	DATE	DRAWN	CHKD						

Pipework



1. Please read in conjunction with all Mesh information

2. Final Plantroom pipework connections and ancillary equipment positions to be detailed by contractor.

3. TA - To Above
TB - To Below
FA - From Above
FB - From Below
HL - High Level
LL - Low Level



Pipework rises TA from below ground

Pipework below ground

HP01-

—Pipework from HL TB with branch at LL

mesh.

1A Regency Lawn	
Ground Floor - Heating and Cooling Layout	
SCALE 1 : 25	SIZE A1
DWG NO 23-0102 - 11 - 001	

Legend

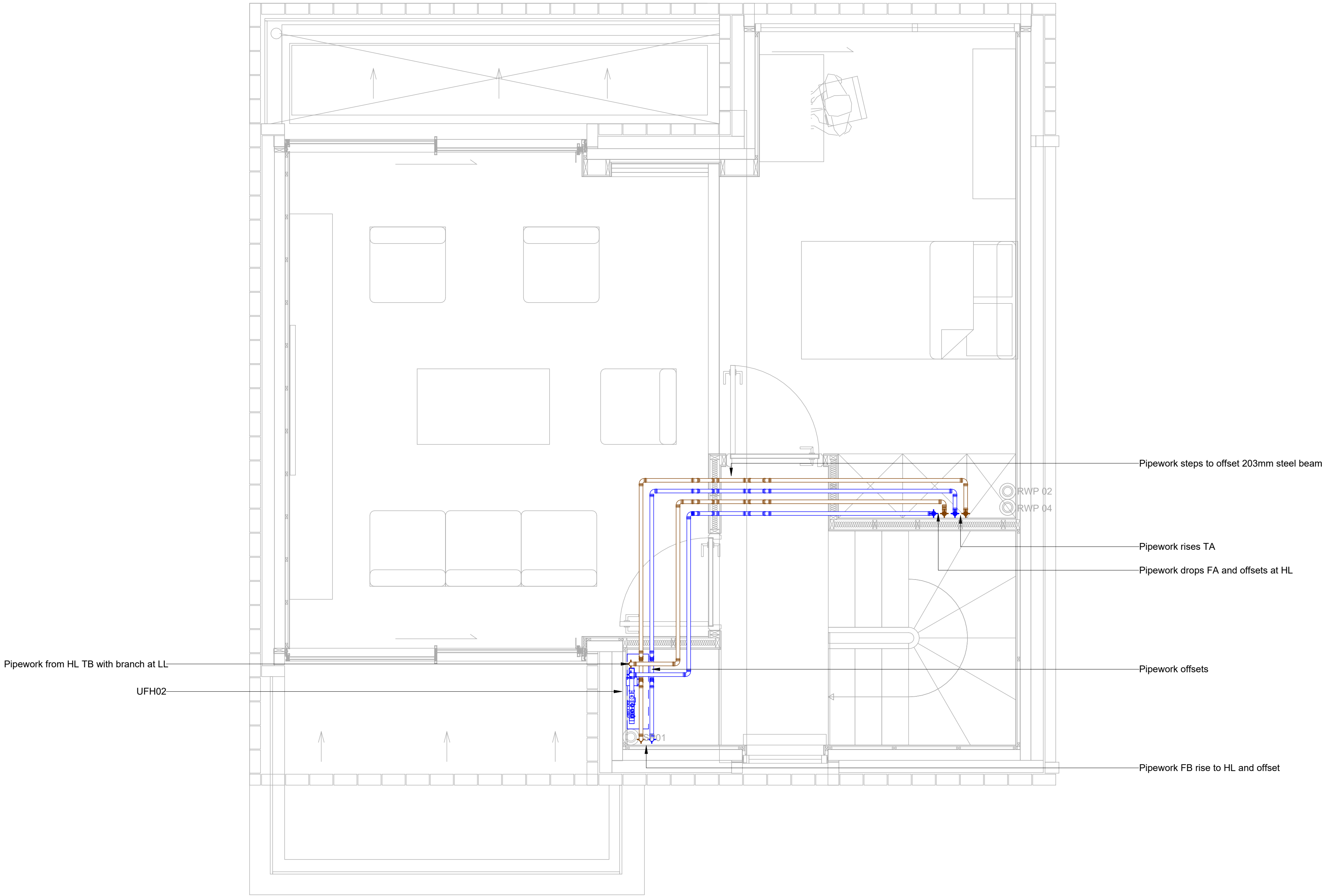
Pipework

LTHW - Flow

LTHW - Return

Notes

1. Please read in conjunction with all Mesh information
2. Final Plantroom pipework connections and ancillary equipment positions to be detailed by contractor.
3. TA - To Above
TB - To Below
FA - From Above
FB - From Below
HL - High Level
LL - Low Level



2	REVISED TENDER ISSUE	24/01/2024	IP	SC
1	REVISED TENDER ISSUE	13/11/2023	IP	JB
0	TENDER ISSUE	06/11/2023	IP	JB
A	DRAFT FOR COMMENT	08/08/2023	IP	JB
REV	DESCRIPTION	DATE	DRAWN	CHKD



DRAWN	24/01/2024	IP
CHECK	24/01/2024	SC
APPROVED	24/01/2024	SC
ISSUED	24/01/2024	IP
REVISION	2	
CONTRACT NO	23-0102	

1A Regency Lawn	
First Floor - Heating and Cooling Layout	
SCALE 1 : 25	SIZE A1
DWG NO 23-0102 - 11 - 002	

Legend

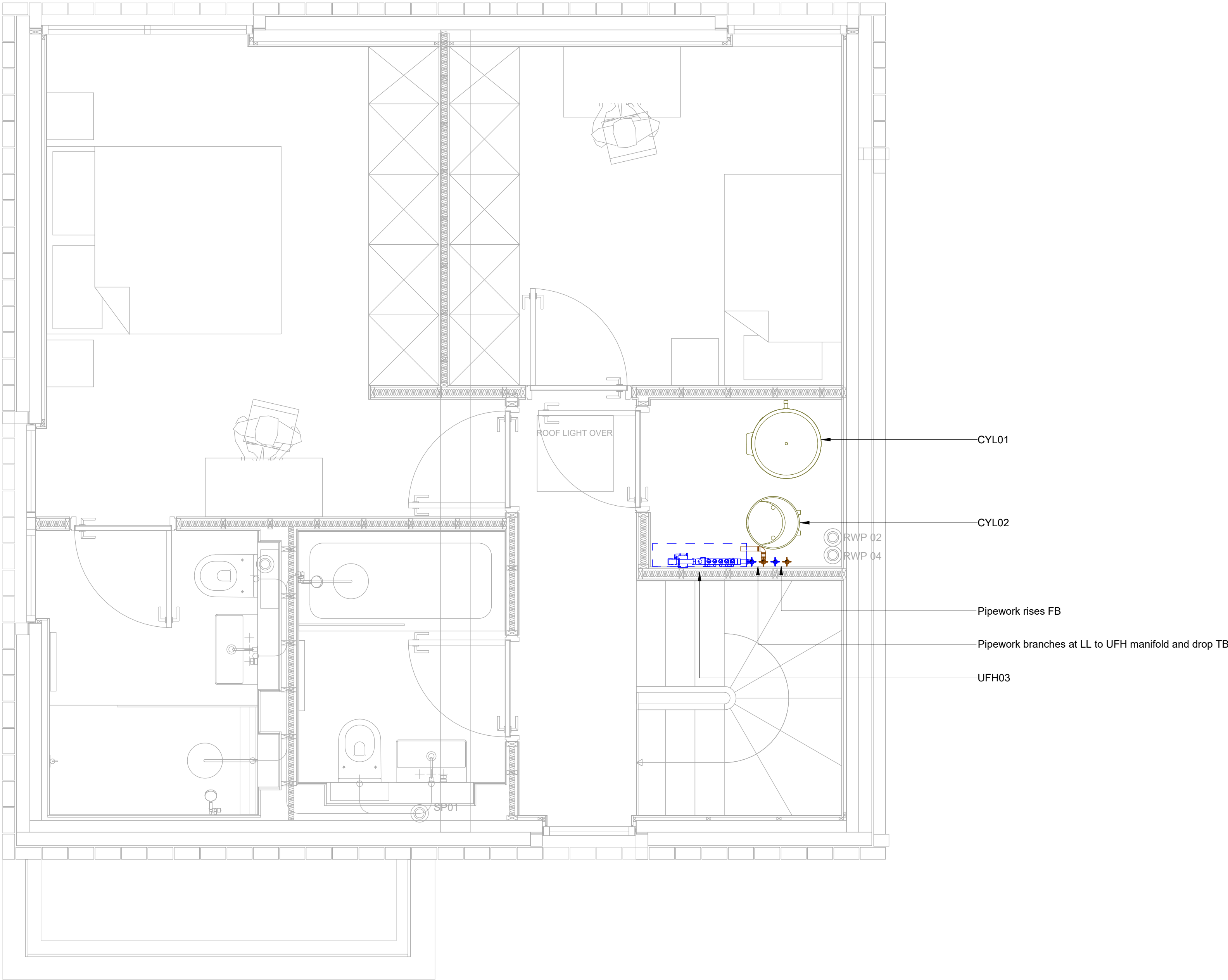
Pipework

LTHW - Flow

LTHW - Return

Notes

1. Please read in conjunction with all Mesh information
2. Final Plantroom pipework connections and ancillary equipment positions to be detailed by contractor.
3. TA - To Above
TB - To Below
FA - From Above
FB - From Below
HL - High Level
LL - Low Level



2	REVISED TENDER ISSUE	24/01/2024	IP	SC
1	REVISED TENDER ISSUE	13/11/2023	IP	JB
0	TENDER ISSUE	06/11/2023	IP	JB
A	DRAFT FOR COMMENT	08/08/2023	IP	JB
REV	DESCRIPTION	DATE	DRAWN	CHKD

mesh.

DRAWN	24/01/2024	IP
CHECK	24/01/2024	SC
APPROVED	24/01/2024	SC
ISSUED	24/01/2024	IP
REVISION	2	
CONTRACT NO	23-0102	

1A Regency Lawn	
Second Floor - Heating and Cooling Layout	
SCALE 1 : 25	SIZE A1
DWG NO 23-0102 - 11 - 003	

Electrical Equipment		
Level	Mark	Comments
Level 1	BAT01	Pylontech Force H2 HV System 10.66kWh
Level 1	INV01	EH1 Solis Energy Storage 5kW Hybrid 5G Inverter with DC switch
Roof Level	PV01-013	13No. JA Solar 370W PERC Double Glass Panel
Level 0	RAD01	Electric Towel Rail - sized by others
Level 2	RAD02	Electric Towel Rail - sized by others
Level 2	RAD03	Electric Towel Rail - sized by others

Mechanical Equipment		
Level	Mark	Comments
Level 0	HP01	ecoFOREST ecoAIR+ 1-7 PRO
Level 2	MVHR01	Vent Axia Sentinel Kinetic High Flow
Level 2	CYL01	Vaillant 300L uniSTOR
Level 2	CYL02	Lapesa 80L Geise Inertia GX4-80IF

Pipe Accessory Schedule		
Level	Mark	Comments
Level 0	UFH01	Wavin 4 - Port Manifold
Level 1	UFH02	Wavin 3 - Port Manifold
Level 2	UFH03	Wavin 5 - Port Manifold

2	REVISED TENDER ISSUE	11/12/2023	IP	JB
1	REVISED TENDER ISSUE	13/11/2023	IP	JB
0	TENDER ISSUE	06/11/2023	IP	JB
REV	DESCRIPTION	DATE	DRAWN	CHKD



DRAWN	11/12/2023	IP
CHECK	11/12/2023	JB
APPROVED	11/12/2023	JB
ISSUED	11/12/2023	IP
REVISION	2	
CONTRACT NO	23-0102	

1A Regency Lawn	
Equipment Schedule	
SCALE	SIZE A1
DWG NO 23-0102 - 12 - 000	