

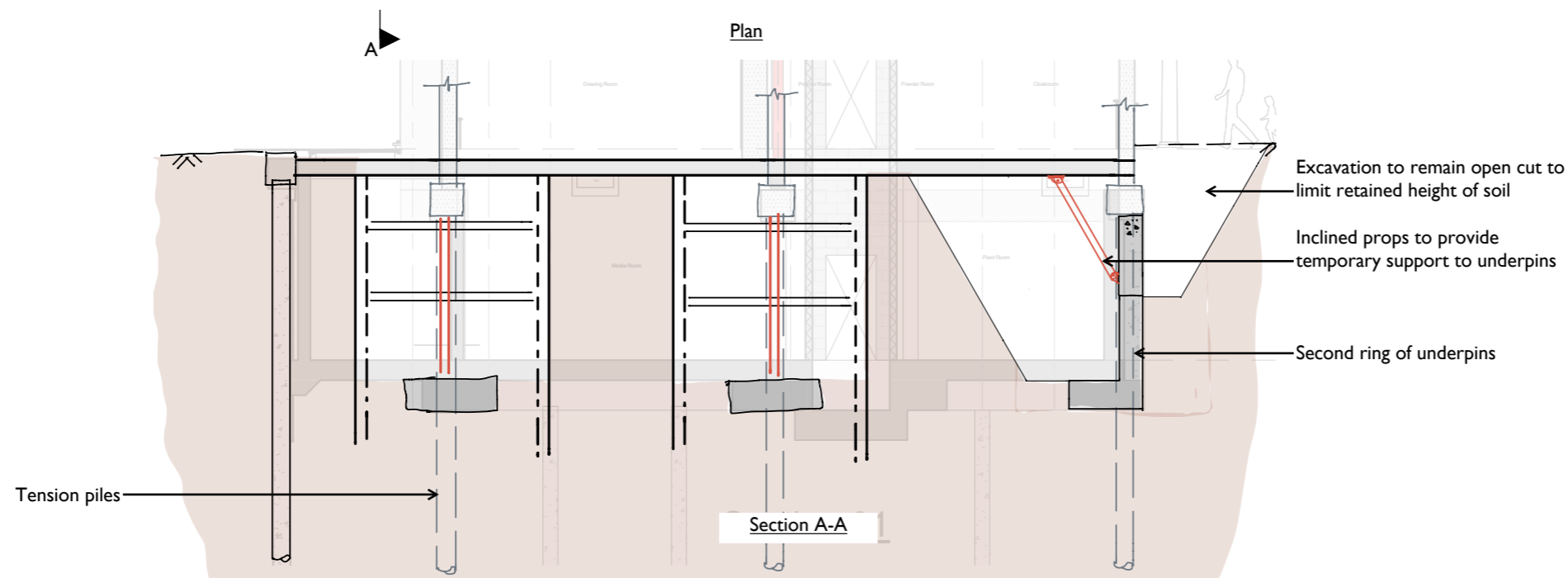
STEP 6

Install inclined props between first ring of underpins and ground floor slab for temporary support as shown in section

STEP 7

Excavate to formation level and install second ring of underpins in hit and miss sequence

Complete second ring of underpins to formation level throughout perimeter requiring underpins
 - pins in between piles to be cast prior to those encompassing piles to allow temporary stability of structure



STEP 8

Carry out excavation to formation level of basement
 - Avoid impact to temporary props supporting the ground beams during bulk excavation

STEP 9

Install tension piles using low head height piling rig

Notes

- Not to scale
- For information only
- Final construction sequence by main contractor

**WEBB
YATES** ENGINEERS

020 3696 1550
 london@webbyates.com
 www.webbyates.com

Drawing No.

J5106-S-SK-0033

Project

Maresfield Gardens

Status

S9

Drawing Title

Construction sequence (3 of 4)

Date

23.01.24

Drawn by

NW

Scale

NTS

Revision

01