

STEP 3

Install ground level slab and beams to swimming pool area to provide lateral support to the tops of piles prior to the bulk excavation

Install ground level slab to main house using Pynford beam system with local cut outs
 - to allow access to subsequent excavation work
 - to cast mass concrete columns to internal piles subsequently

STEP 4

Carry out local excavations under internal ground beams to provide temporary vertical support prior to bulk excavation, as piles may lose load carrying capacity once soil around is removed (presence of reinforcement within piles to investigated during detailed design stage)

Install concrete bases to support temporary works.

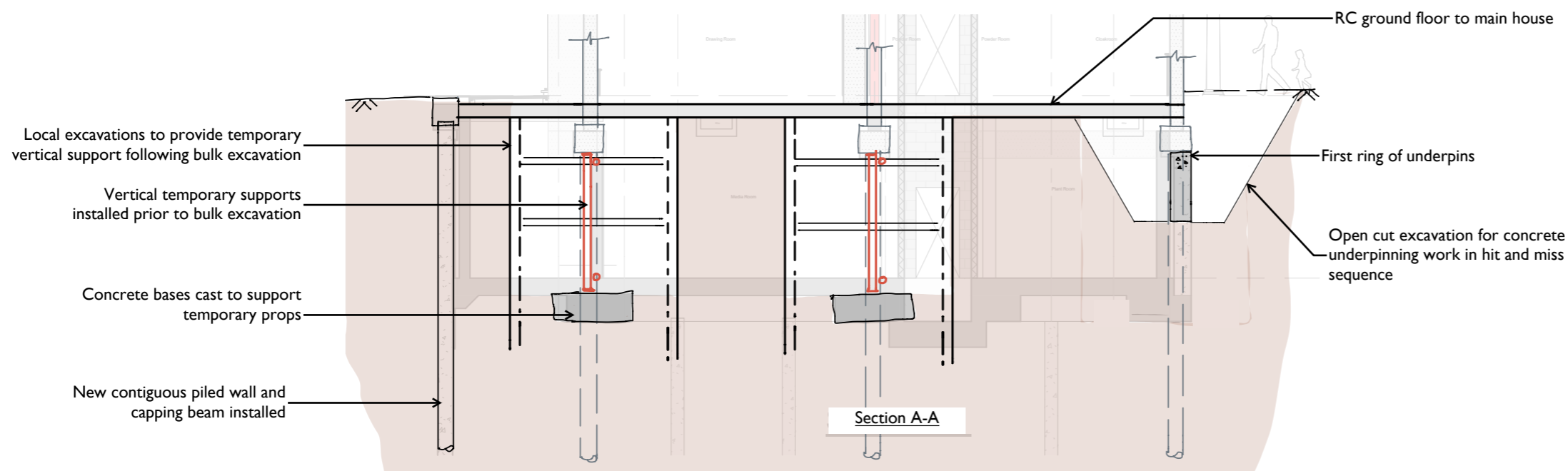
Carry out strengthening works to ground beams where internal forces (moments, shear forces) will change due to new supports

Install temporary props (eg: Megashor) to provide vertical support in temporary case

STEP 5

Excavate local excavations in hit and miss sequence for concrete underpins to approx 2m below ground level

Complete first ring of underpins to 2m below ground level throughout perimeter requiring underpins
 - pins in between piles to be cast prior to those encompassing piles to allow temporary stability of structure



Notes

- Not to scale
- For information only
- Final construction sequence by main contractor

**WEBB
YATES** ENGINEERS

020 3696 1550
 london@webbyates.com
 www.webbyates.com

Drawing No. J5106-S-SK-0032		Project Maresfield Gardens		Status S9
Drawing Title Construction sequence (2 of 4)				
Date 23.01.24	Drawn by NW	Scale NTS	Revision 01	