

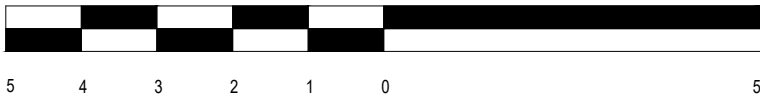
Lower Ground Floor plan

tasou  
associates

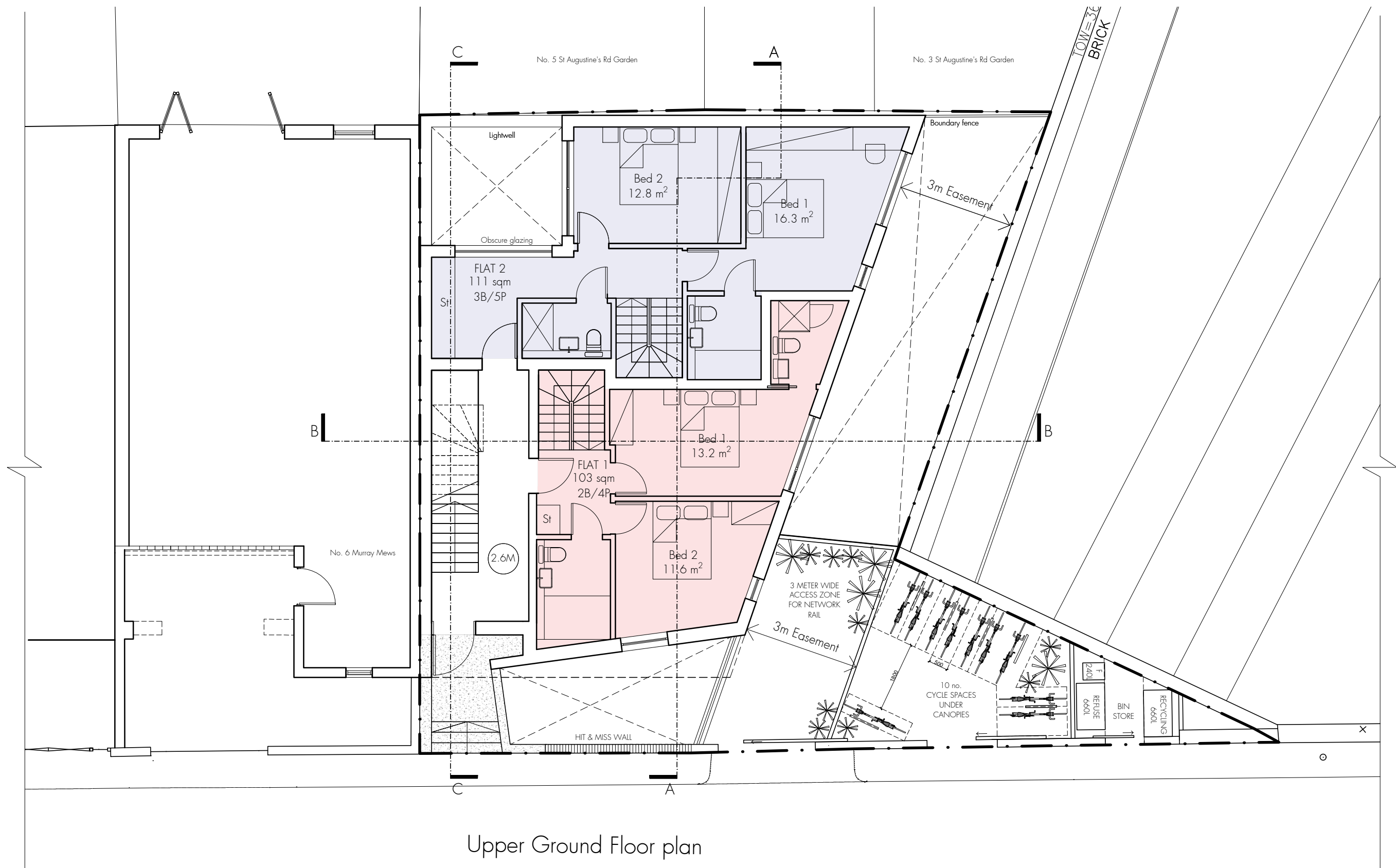
architects + structural engineers

4 Amwell Street, London. EC1R 1UG T:020 7713 7070 F:020 7713 7071 E:tasou@tasou.co.uk

- A. 19.09.2023 - FRONT LIGHT WELL ENLARGED AND BEDROOM 3 OMITTED  
B. 18.01.2024- REVISIONS TO ELEVATION FOLLOWING DESIGN REVIEW PANEL FEEDBACK



project	4 Murray Mews, London, NW1 9RJ		
dwg title	Proposed Lower Ground Floor		
job no.	1116	dwg no.	PP.01
date	Oct 2021	scale @ A3	1:100
		rev.	B



Upper Ground Floor plan

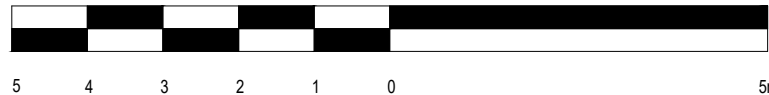
tasou  
associates

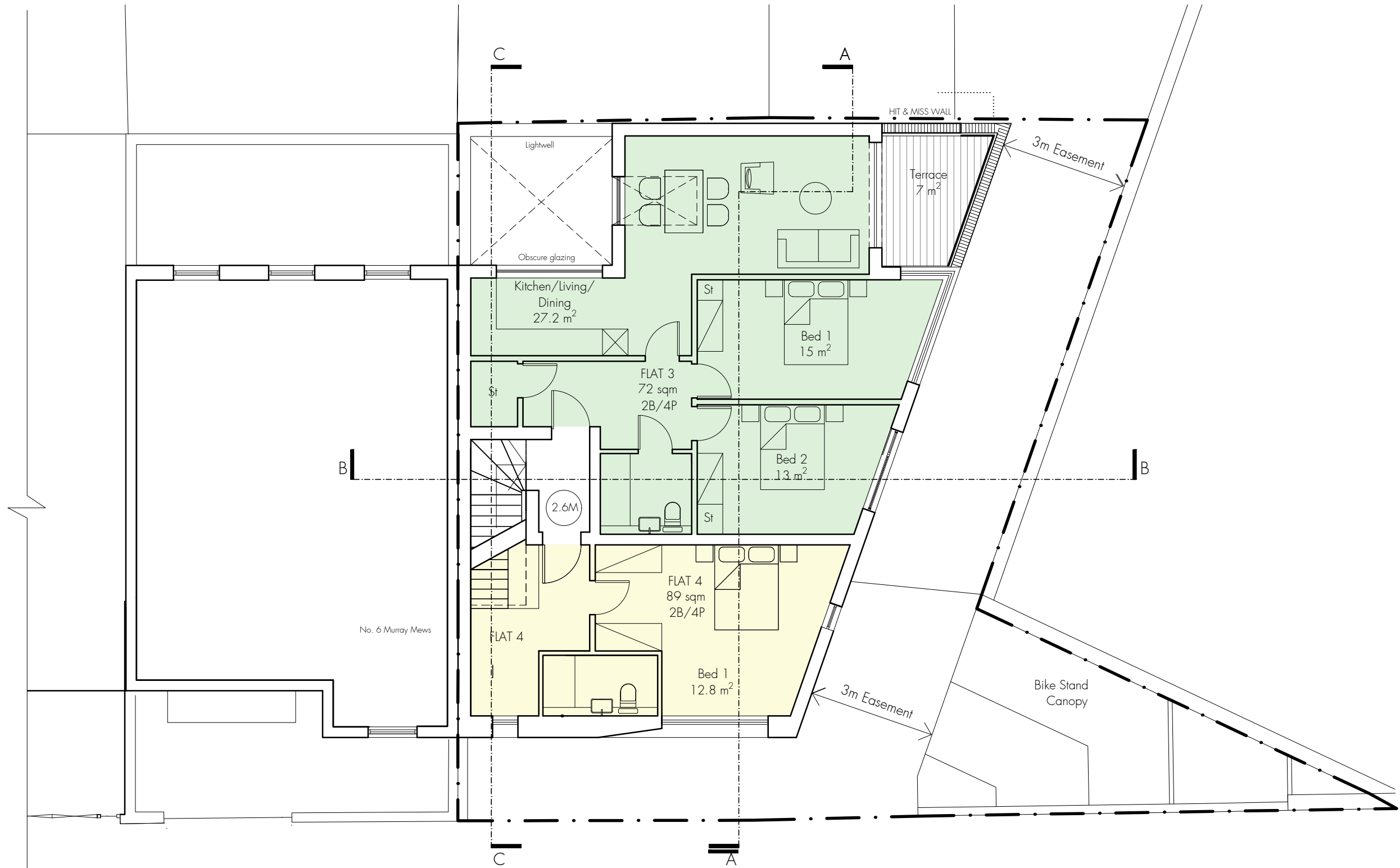
architects + structural engineers

4 Amwell Street, London. EC1R 1UG T:020 7713 7070 F:020 7713 7071 E:tasou@tasou.co.uk

project	4 Murray Mews, London, NW1 9RJ		
dwg title	Proposed Upper Ground Floor		
job no.	1116	dwg no.	PP.02
date	Oct 2021	scale @ A3	1:100
		rev.	C

- A. 20.02.2023 - GATE ACCESS PROVIDED IN ACCORDANCE WITH NETWORK RAIL EASEMENT  
- PLANTERS TO REAR OF PROPERTY REMOVED  
B. 23.10.2023 - FRONT LIGHT-WELL ENLARGED  
C. 18.01.2024 - REVISIONS TO ELEVATION FOLLOWING DESIGN REVIEW PANEL FEEDBACK





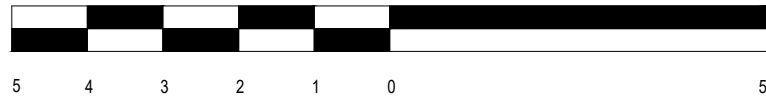
First Floor plan

tasou  
associates

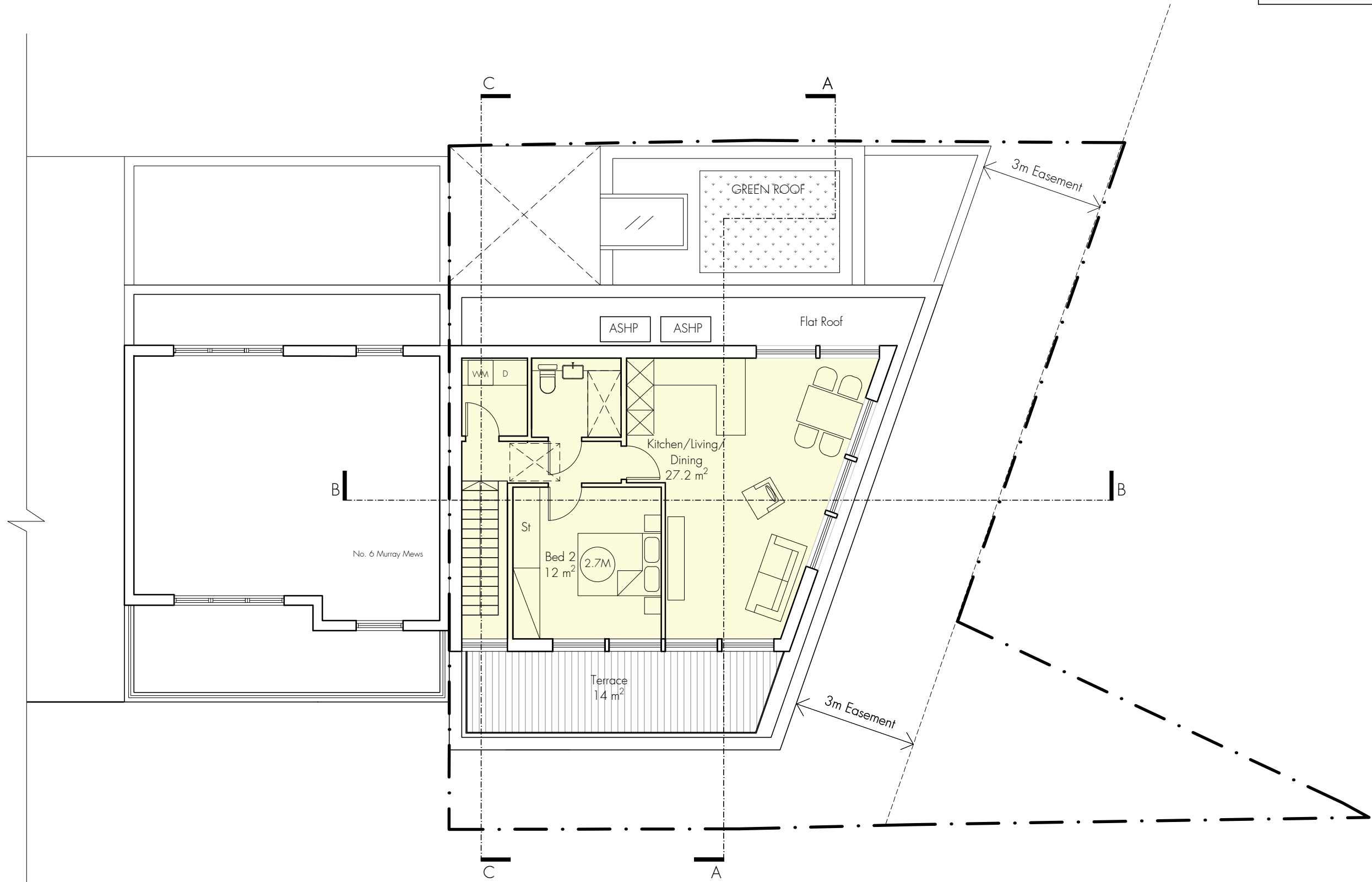
architects + structural engineers

4 Amwell Street, London. EC1R 1UG T:020 7713 7070 F:020 7713 7071 E:tasou@tasou.co.uk

- A. 23.10.2023 - FRONT LIGHT WELL ENLARGED  
B. 18.01.2024 - REVISIONS TO ELEVATION FOLLOWING DESIGN REVIEW PANEL FEEDBACK



project	4 Murray Mews, London, NW1 9RJ		
dwg title	Proposed First Floor		
job no.	1116	dwg no.	PP.03
date	Oct 2021	scale @ A3	1:100
		rev.	B

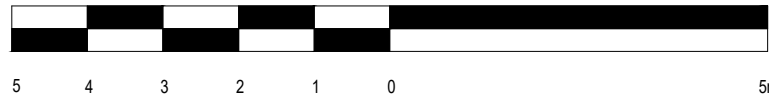


Second Floor plan

tasou  
associates

architects + structural engineers

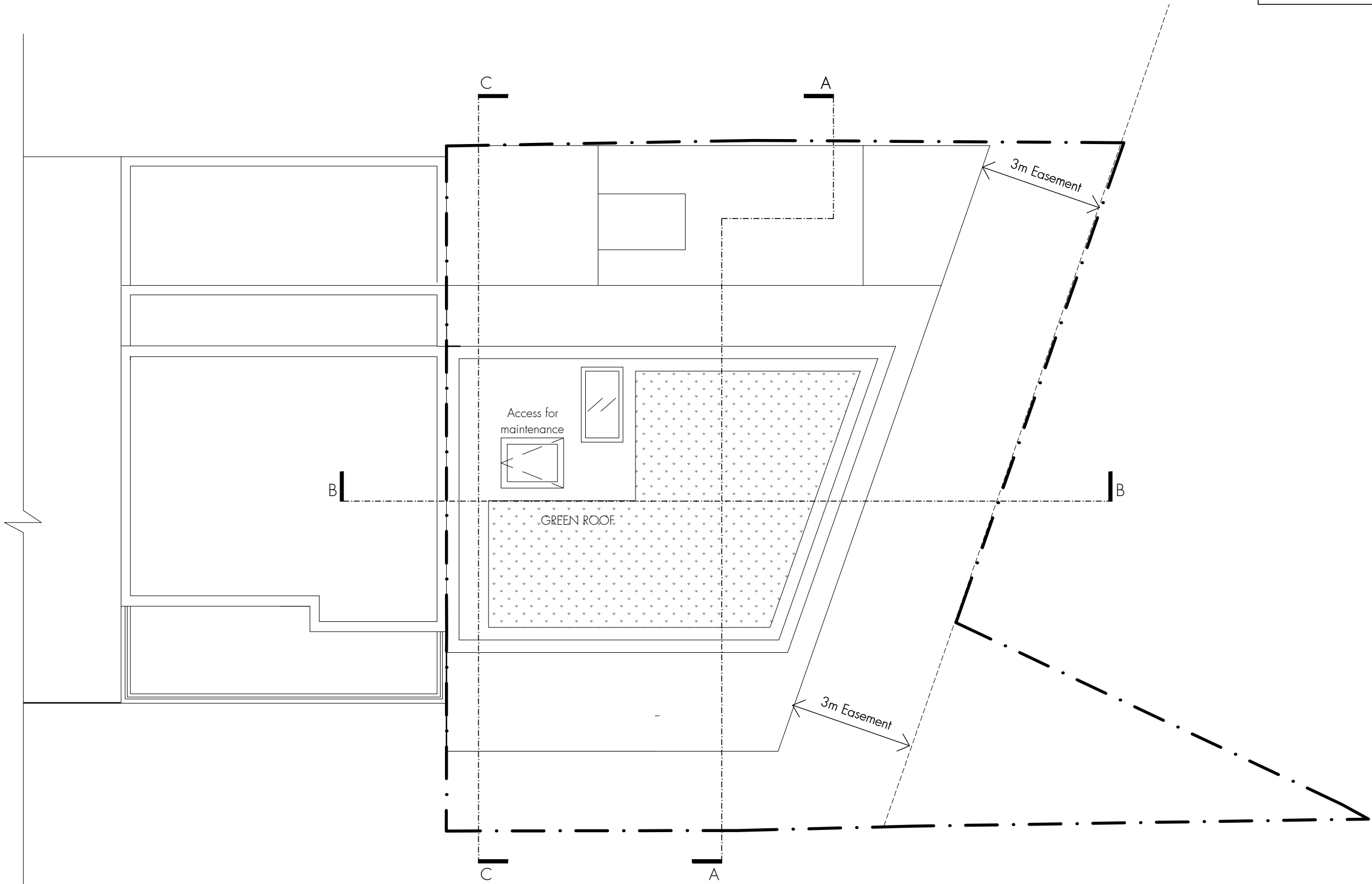
4 Amwell Street, London. EC1R 1UG T:020 7713 7070 F:020 7713 7071 E:tasou@tasou.co.uk



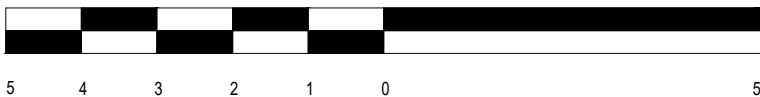
- A. 19.09.2023 - SECOND FLOOR SET BACK 600mm ON RAILWAY SIDE  
B. 18.01.2024 - REVISIONS TO ELEVATION FOLLOWING DESIGN REVIEW PANEL FEEDBACK



project	4 Murray Mews, London, NW1 9RJ		
dwg title	Proposed Second Floor		
job no.	1116	dwg no.	PP.04
date	Oct 2021	scale @ A3	1:100
		rev.	B



Roof plan



- A. 23.10.2023 - SECOND FLOOR SET BACK BY 600mm ON RAILWAY SIDE
- B. 18.01.2024 - REVISIONS TO ELEVATION FOLLOWING DESIGN REVIEW PANEL FEEDBACK



tasou  
associates

architects + structural engineers

4 Amwell Street, London. EC1R 1UG T:020 7713 7070 F:020 7713 7071 E:tasou@tasou.co.uk

project	4 Murray Mews, London, NW1 9RJ		
drwg title	Proposed Roof Plan		
job no.	1116	drwg no.	PP.11
date	Oct 2021	scale @ A3	1:100
		rev.	B