



Black Timber Cladding

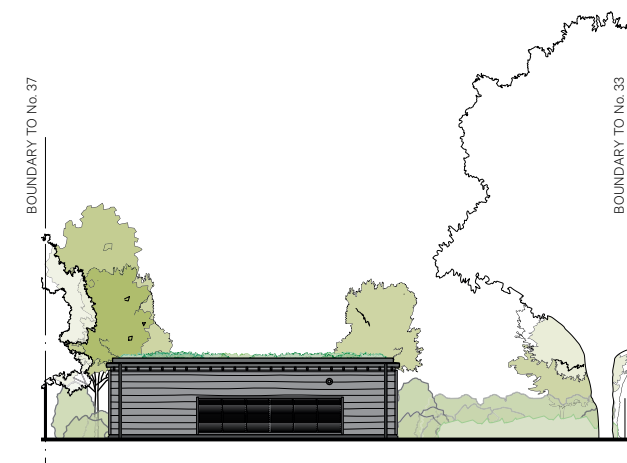
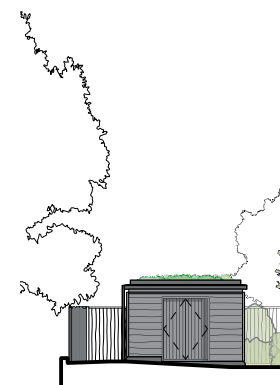
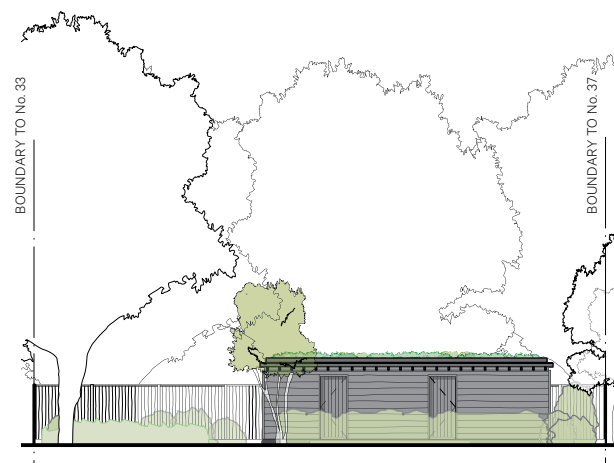
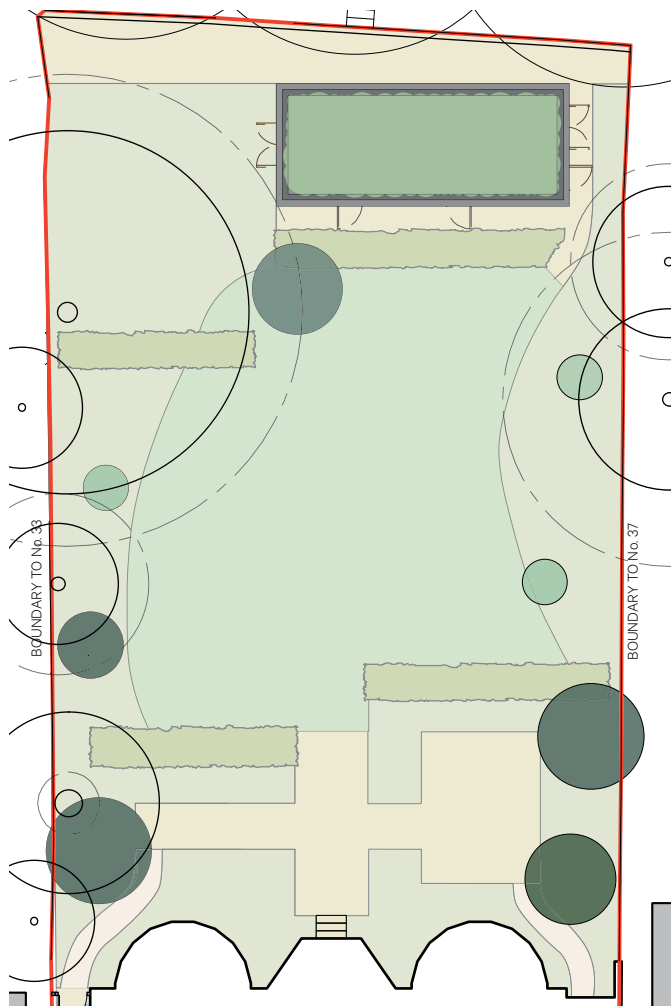
## 05 Proposed Garden Shed

The proposal is to introduce a black timber clad garden shed to the end of the rear garden to house plant equipment and for general garden storage.

### | Materiality

Materials have been carefully chosen to be attractive, durable and appropriately discrete for a garden building, allowing the garden trees and other planting to be the main focus.

- Black timber cladding
- Green roof
- Zinc roof edges and rainwater goods

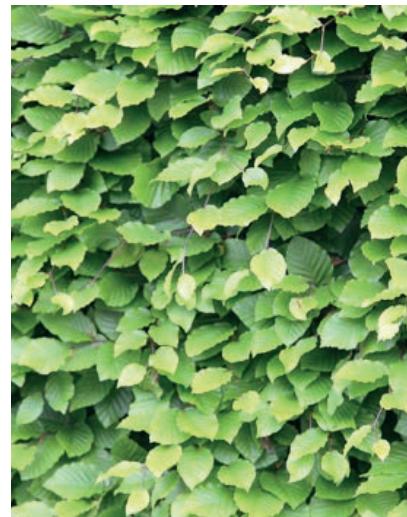


Scale 0 1 2 3 4 5 10 meters





Limestone paving



Images of trees and hedges proposed



Images of trees and plants proposed

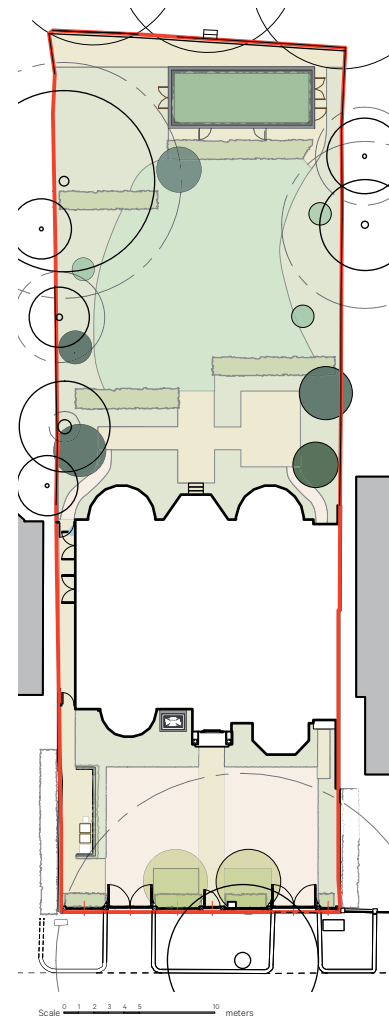
## 06 Landscape Design

The proposed landscape scheme includes new paved areas to the front and rear gardens, with extensive areas of carefully considered planting.

The planting has been designed to include generous floral interest in summer, to encourage pollinating insects into the garden. The scheme uses mainly a light blue and purple palette of flowers with a Mediterranean style.

Trees provide privacy in key areas of the garden and provide balance alongside low planting and hedges. Trees have been selected that provide food for wildlife.

Please refer to the landscape plan 929\_PL\_004 and to Alaster Anderson 'Planting Details' document' for the layout and details of the plant and tree varieties that are proposed.



Tree varieties include:

- Amelanchier lamarckii
- Parrotia persica
- Quercus suber
- Arbutus unedo

Low Planting varieties include:

- Fagus sylvatica
- Osmanthus x burkwoodii
- Passiflora caerulea
- Lonicera henryi
- Trachelospermum jasminoides
- Rosa 'Claire Austin'

Low Planting varieties continued:

- Clematis urophylla
- Lonicera nitida 'Maigrün'
- Euphorbia mellifera
- Pittosporum tobira 'Nanum'
- Choisya ternata
- Nerium oleander
- Salvia rosmarinus
- Rhododendron
- Hydrangea petiolaris
- Hedera helix

### | Materiality

Materials have been selected to be durable and complimentary to the landscape palette.

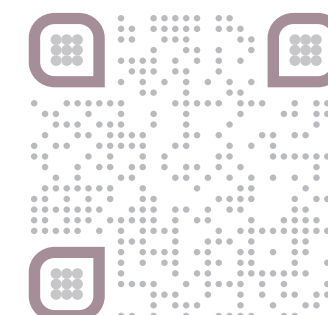
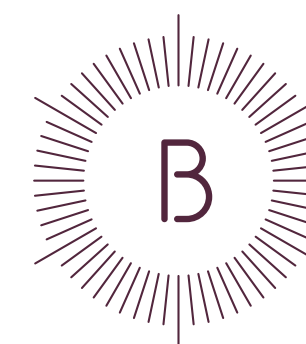
Limestone paving to paths and driveways in setts format for the front court and slab format for the paths. Paving joints will be with permeable pointing.



# 07 Access Statement

---

The existing access to the house will not be effected by the proposals.



Burwell Architects  
|||||