

**KESKIDEE SQUARE PUBLIC REALM**

**PLOT S4, KINGS CROSS CENTRAL**

**Applied Landscape Design**  
**Lighting Tracker to Discharge:**  
Planning Application ref.: 2020/5885/P  
Reserved matter condition 2d  
Plot S4, Kings Cross Central

ALD Project Ref:	931
Document Ref:	ALD931_RP903
Document Revision:	P01
Current Issue Date:	29.01.2023
ALD working date:	29.01.2023
Reason For Issue:	PLANNING

**Prepared By:** Applied Landscape Design Ltd  
Landscape Architect

**Client:** ARGENT(KCCPL)



**INTRODUCTION**

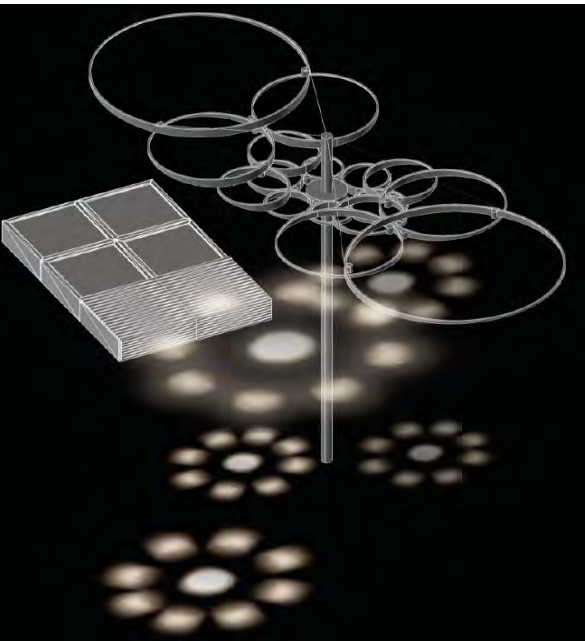
This document has been prepared to discharge the following planning conditions as highlighted below:

Application Ref. 2020/5885/P - Keskidee Square, Kings Cross

CONDITION	DETAILS OF CONDITION	NOTES
2	Detailed drawings, or samples of materials as appropriate, in respect of the following, shall be submitted to and approved in writing by the local planning authority before the relevant part of the work is begun:	
2(a)	Details including sample panels of all external materials and finishes. The materials under this condition shall be displayed in the form of a samples board to be retained on site for the duration of the relevant works;	Not included in this submission
2(b)	Details of all hard and soft landscaping to be incorporated within the public realm including sample panels of typical paving, setts and other hard landscape surface treatments. The samples to demonstrate all materials and typical variations of pattern relationships within those materials;	Refer to ALD931_RP901 for hard landscape information & ALD931_RP902 for soft landscape information
2(c)	Details of landscaping features and plant species to be incorporated within the roof terraces; and	Not included in this submission
2(d)	Details of lighting within the public realm, to include location, design, specification, fittings and fixtures;	Details included in this document, refer to ALD931_MP015 for lighting plan layout

KESKIDEE SQUARE, PLOT S4 PUBLIC REALM - LIGHTING TYPE 'Ca' DETAILS

Refer to ALD931\_MP015 for Light Location

Lighting Code	Light Type	Location	No.	Details	Photo / Visualisation
Ca	Column mounted 'Lighting Canopies' 5200mm total height, 8000mm length or canopy	Central within Keskidee Lane, between S1 & S3, and S4 & S2	8no.	Refer to the following information package	 <div>RAL 820-M</div> <p>NOTE: Image included to show light intent only, details of the street furniture also visible not included in this document</p>



# JASON BRUGES STUDIO KESKIDEE LANE LIGHTING INSTALLATION DETAILS

12/01/2024



# CONTENTS

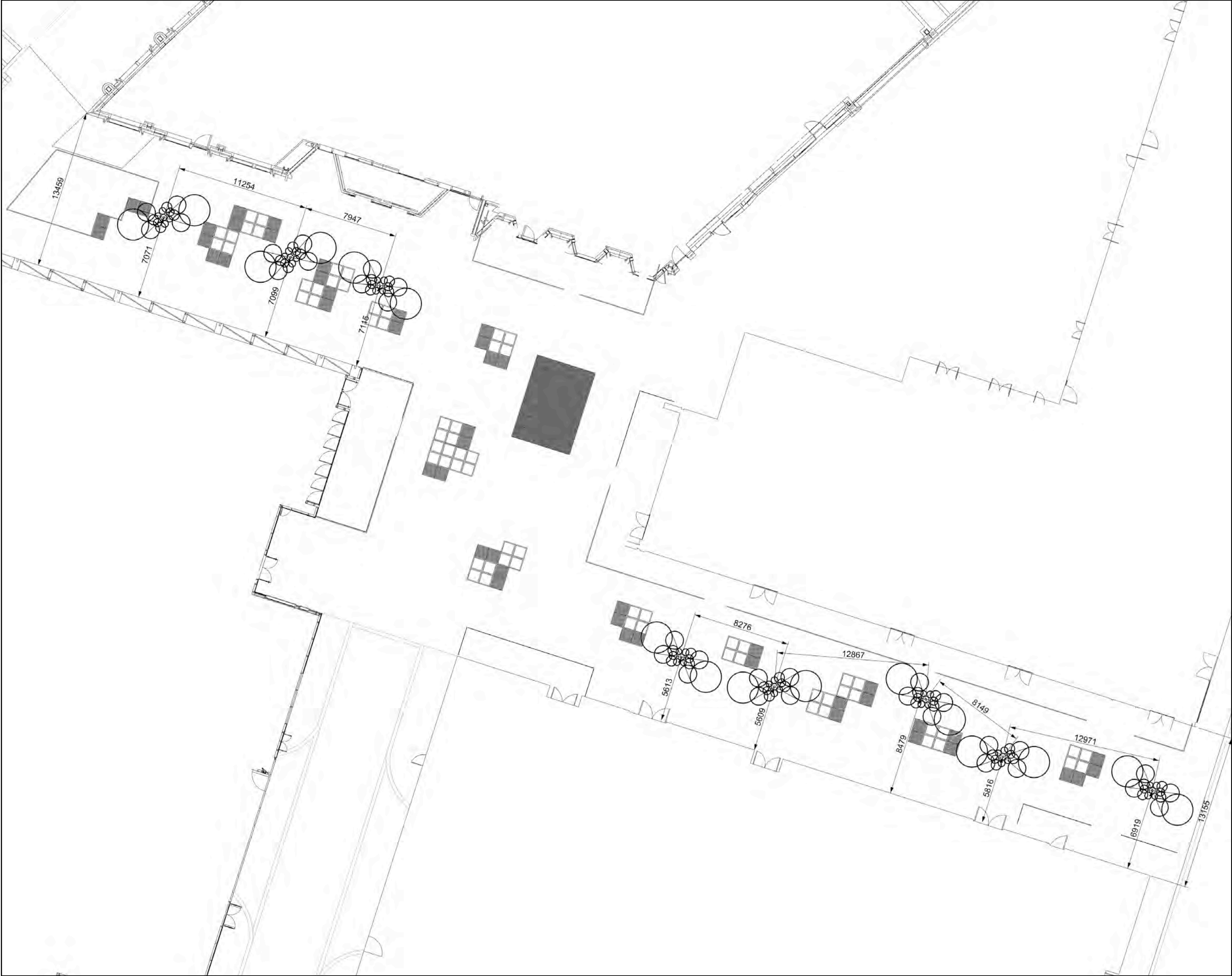
## LIGHTING INSTALLATION DETAILS

- Lighting Canopies | GA
- Typical Lighting Canopy Module | Plan
- Typical Lighting Canopy Module | Elevation
- Mock-Up Images | Luminaire & Bracketry
- LWL Drawing | Mock-Up & Bracketry
- Materials & Finishes
- Light Fixture Details
- Technical Development | Light Fixture
- Luminaire Drawing for Manufacture
- Luminaire Technical Data Sheet
- Lighting Arrangements | Ambient Mode
- Lighting Arrangement | Performance Mode
- Lighting Arrangements | Timeline of Modes



# LIGHTING CANOPIES | GA

Please note the drawing in this presentation pack is not to scale.

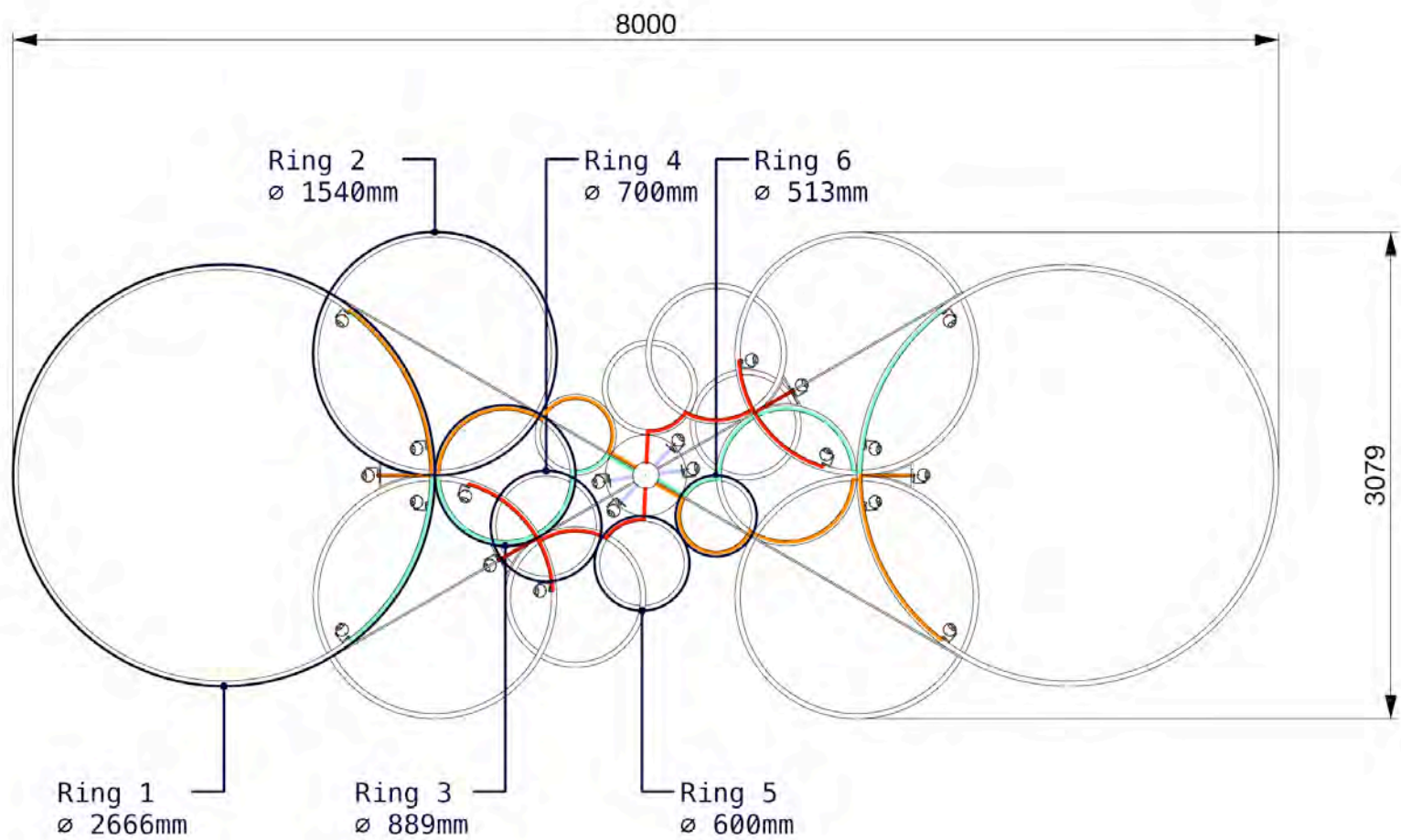


# TYPICAL LIGHTING CANOPY MODULE | PLAN

Please note the drawing in this presentation pack is not to scale.

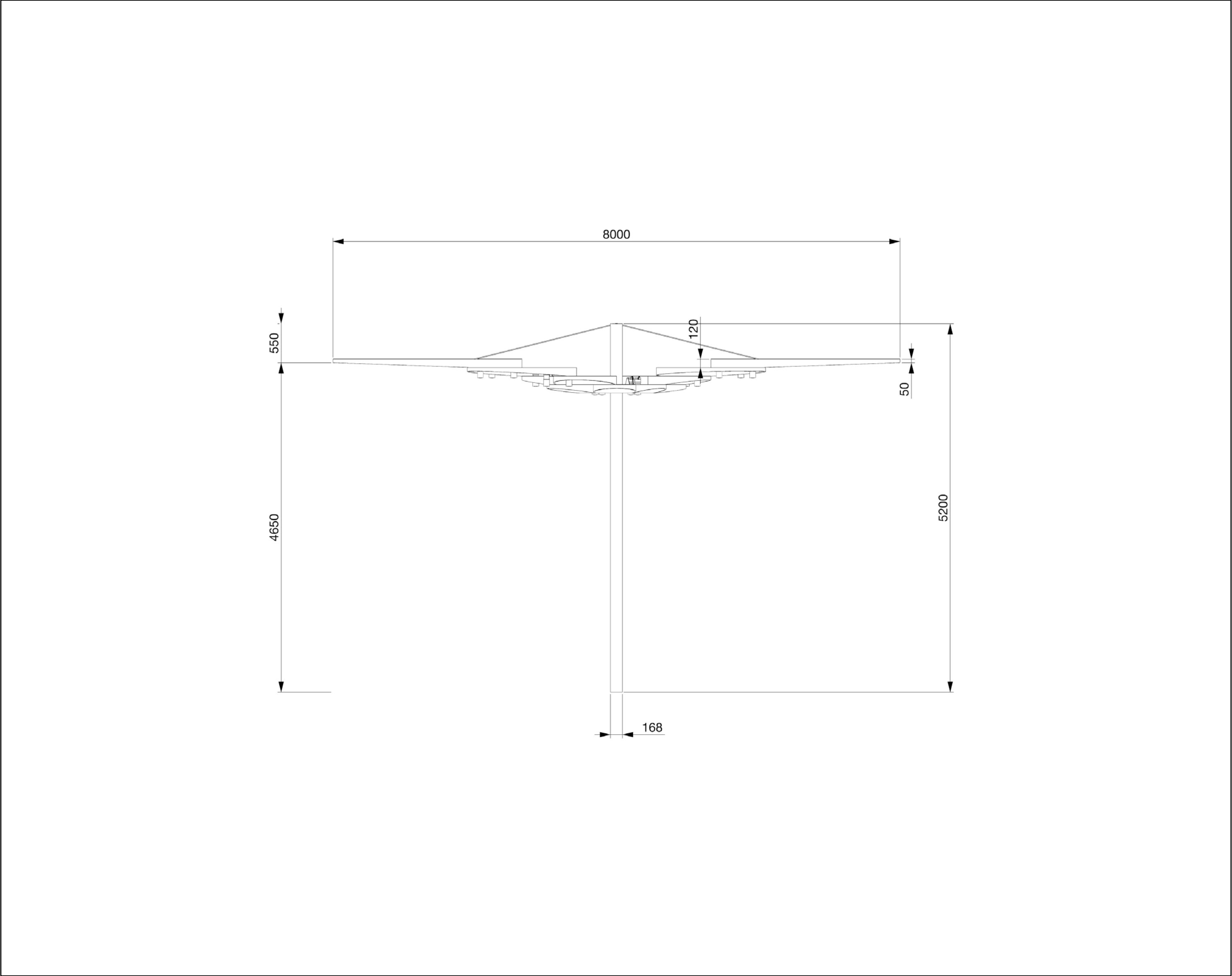
This drawing is of a typical canopy module and the 20 possible light fixture positions within it. Each unique canopy will have a total of 17 light fixtures mounted on 17 of the 20 positions.

Individual canopy module drawings have been issued in a separate drawing pack.



# TYPICAL LIGHTING CANOPY MODULE | ELEVATION

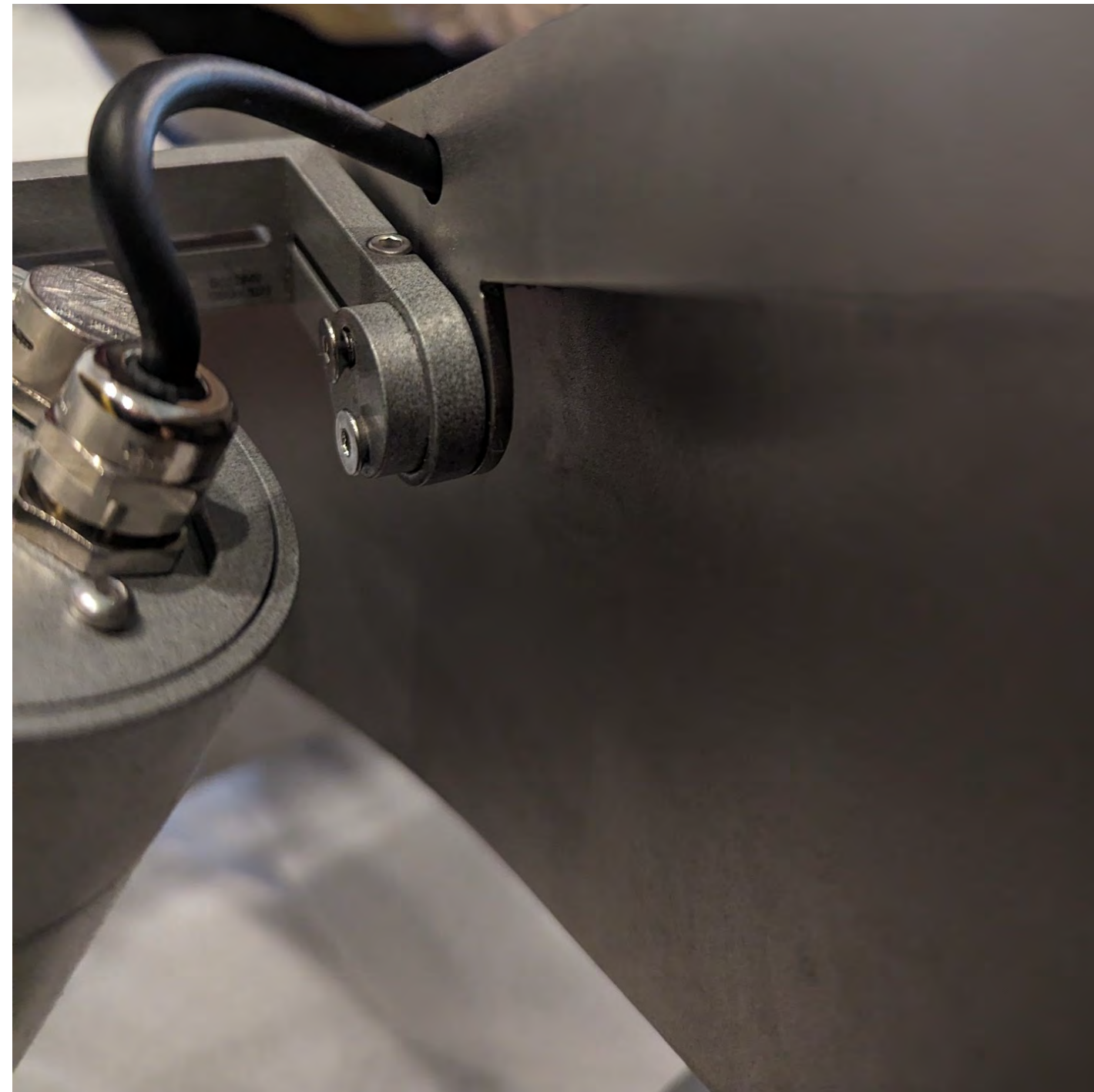
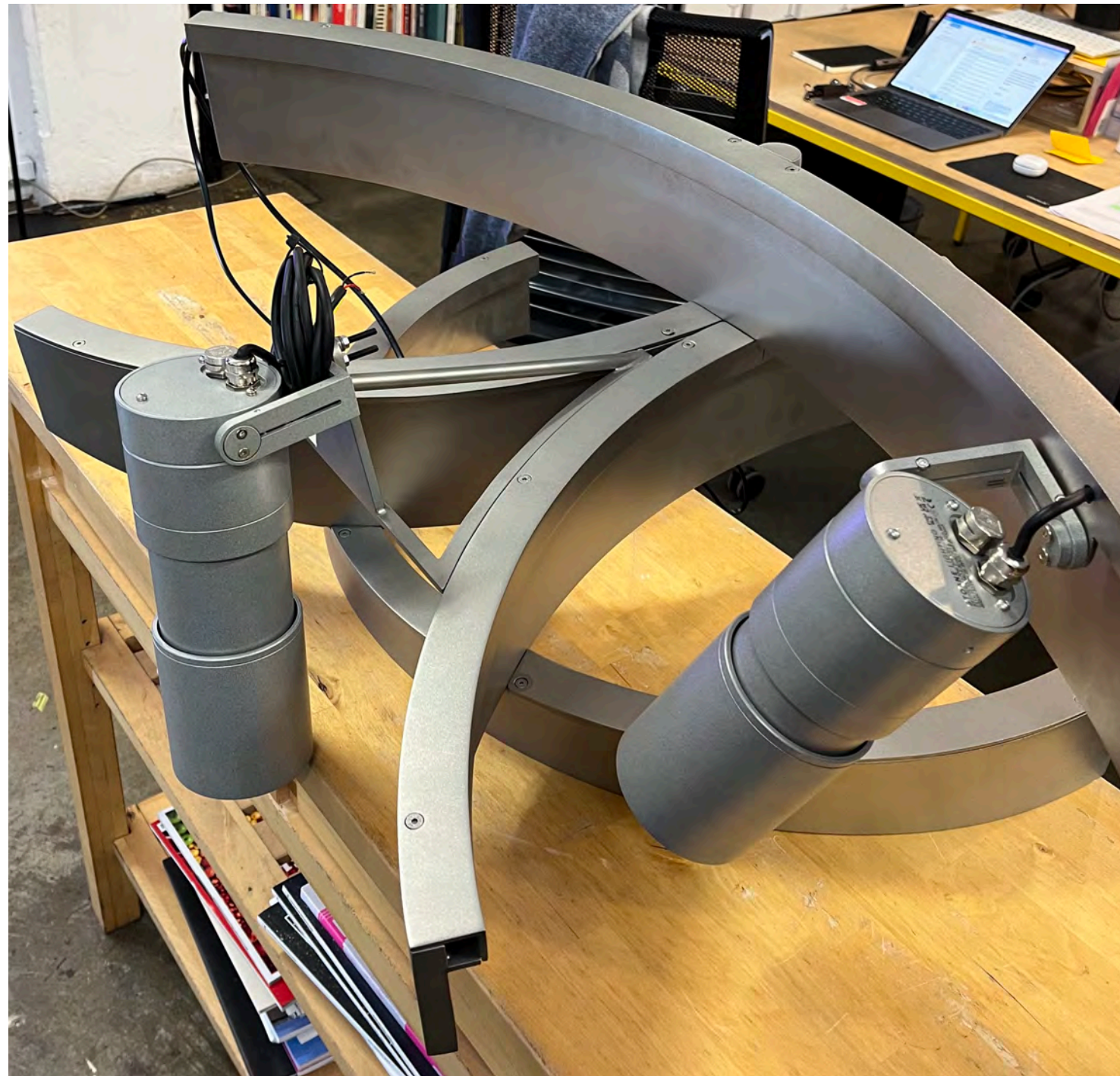
Please note the drawing in this presentation pack is not to scale.





## MOCK-UP IMAGES | LUMINAIRE & BRACKETRY

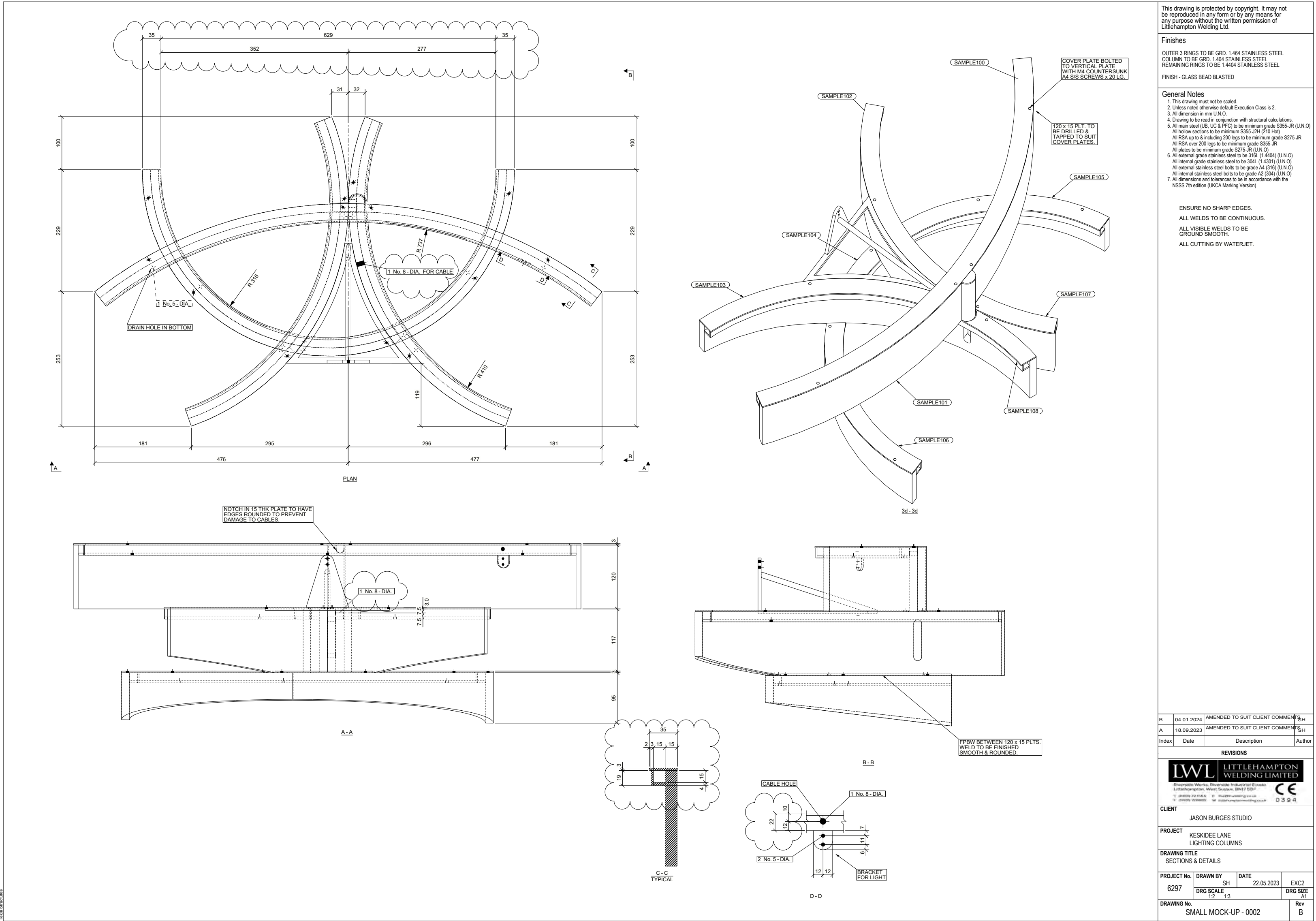
Luminaire and bracketry details shown on a section of the canopy structure.  
Housing for luminaire finished in RAL 820M against the bead blasted prototype by LWL.





LWL DRAWING | MOCK-UP & BRACKETRY

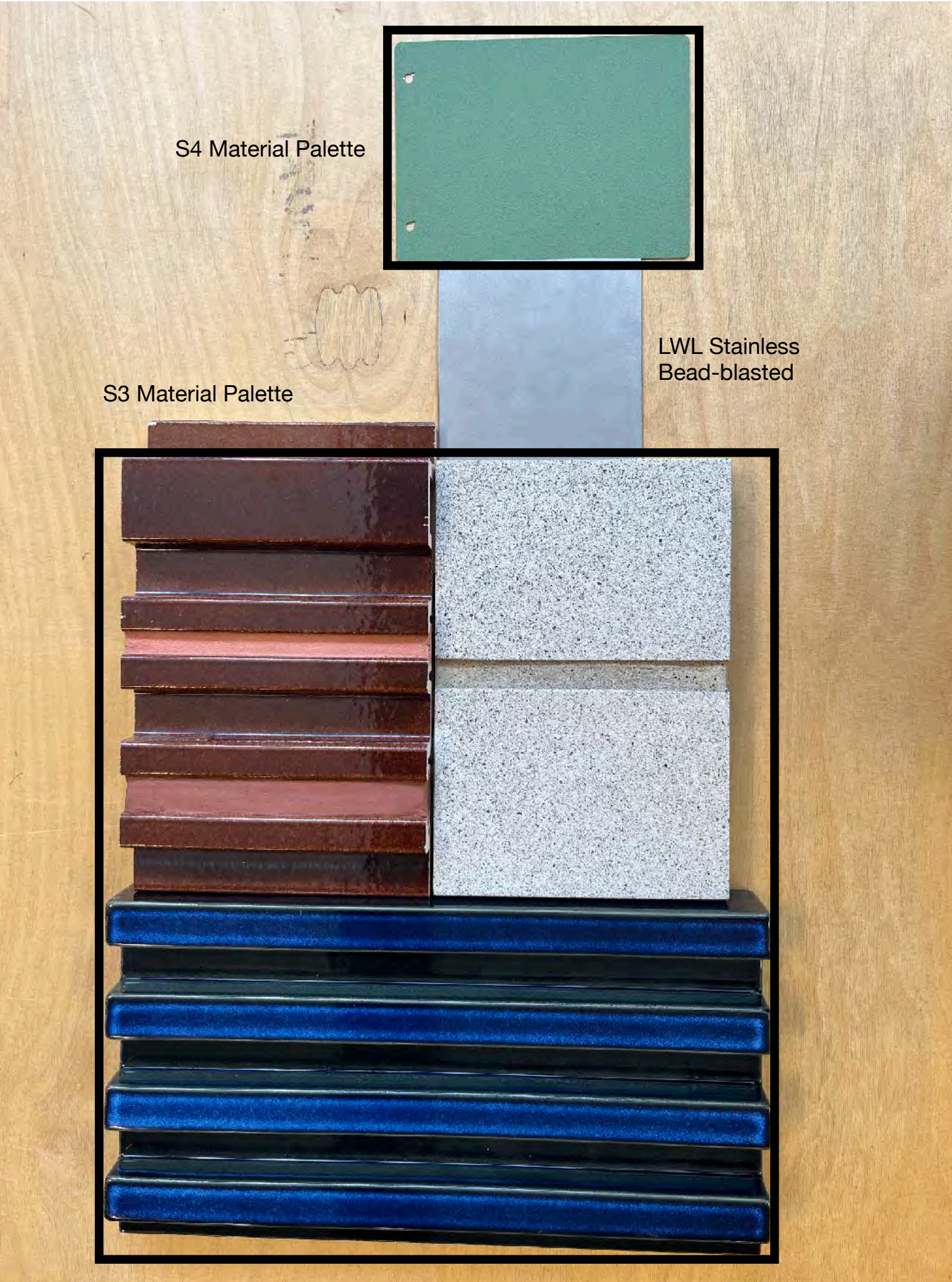
LWL drawing for manufacture showing a section of the canopy and the bracketry details.





# MATERIALS & FINISHES

The finish of the artwork takes into consideration the material palette of surrounding buildings.



Canopy will be finished in bead-blasted stainless steel.



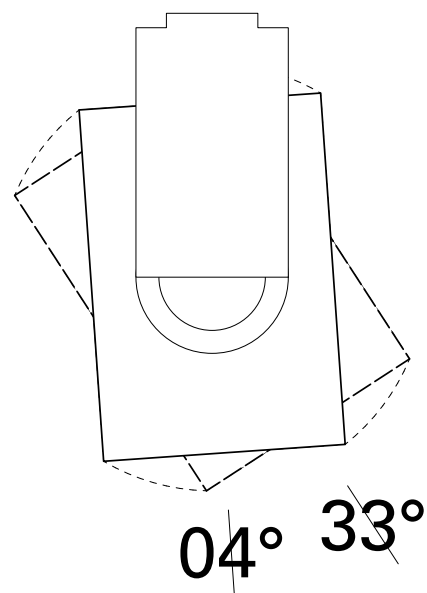
MS light fixtures to be finished in RAL820M Silver to match LWL bead blasted steel.



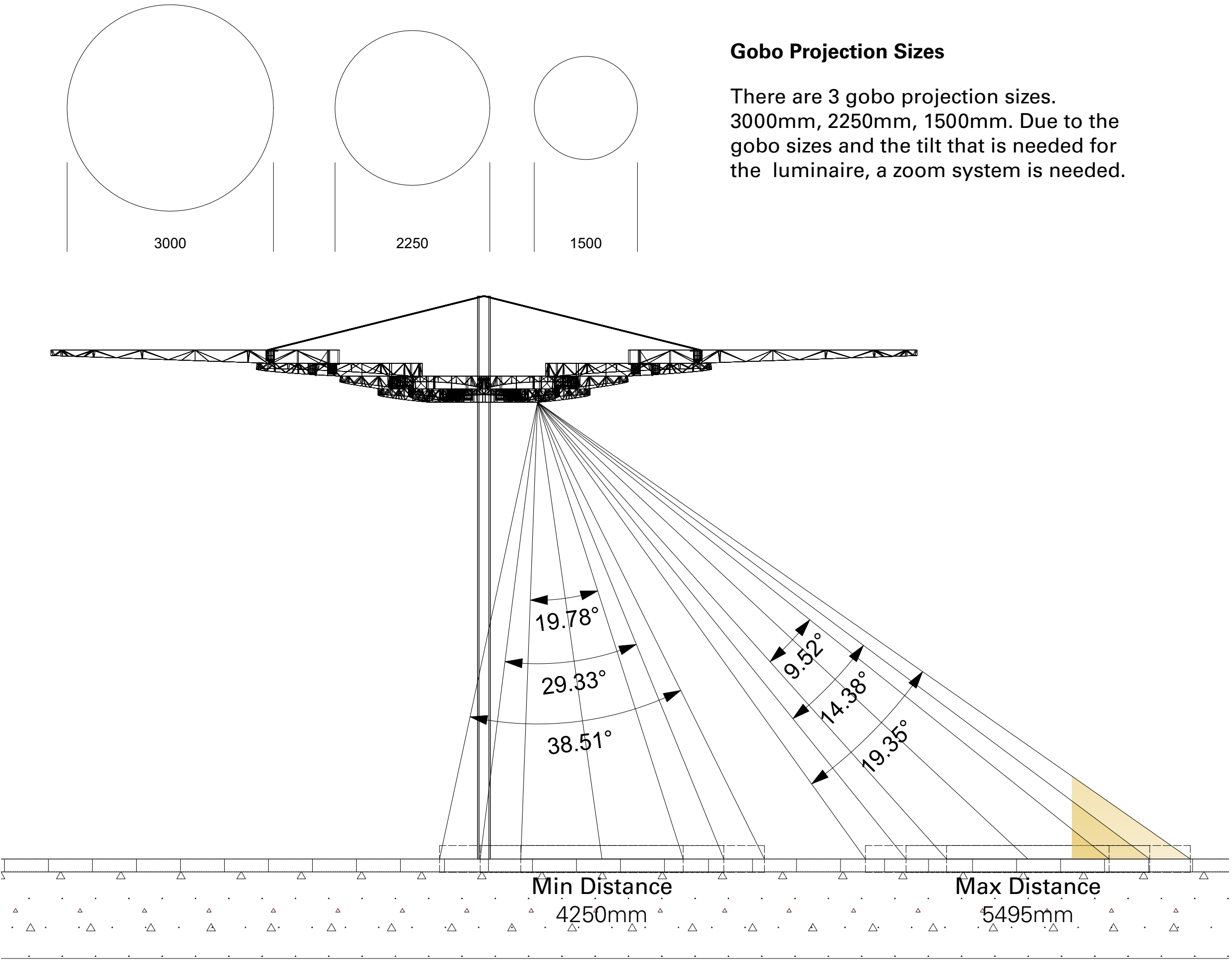
# LIGHT FIXTURE DETAILS

The projections occur over a range of distances:  
4250mm minimum  
5495mm maximum

The lens can be designed to work for the average distance of ~4900mm.



Attributes	Values
<b>Mechanical</b>	
Pan Range	-45° - °45
Tilt Range	4° - 33°
Recommended Height	120mm
<b>Electrical</b>	
Dimable	Yes
Colour	Single Colour
CCT	4000K
CRI	90 CRI
<b>Optical</b>	
Beam Range	9° - 39°
Recommended Lumens	4000lm



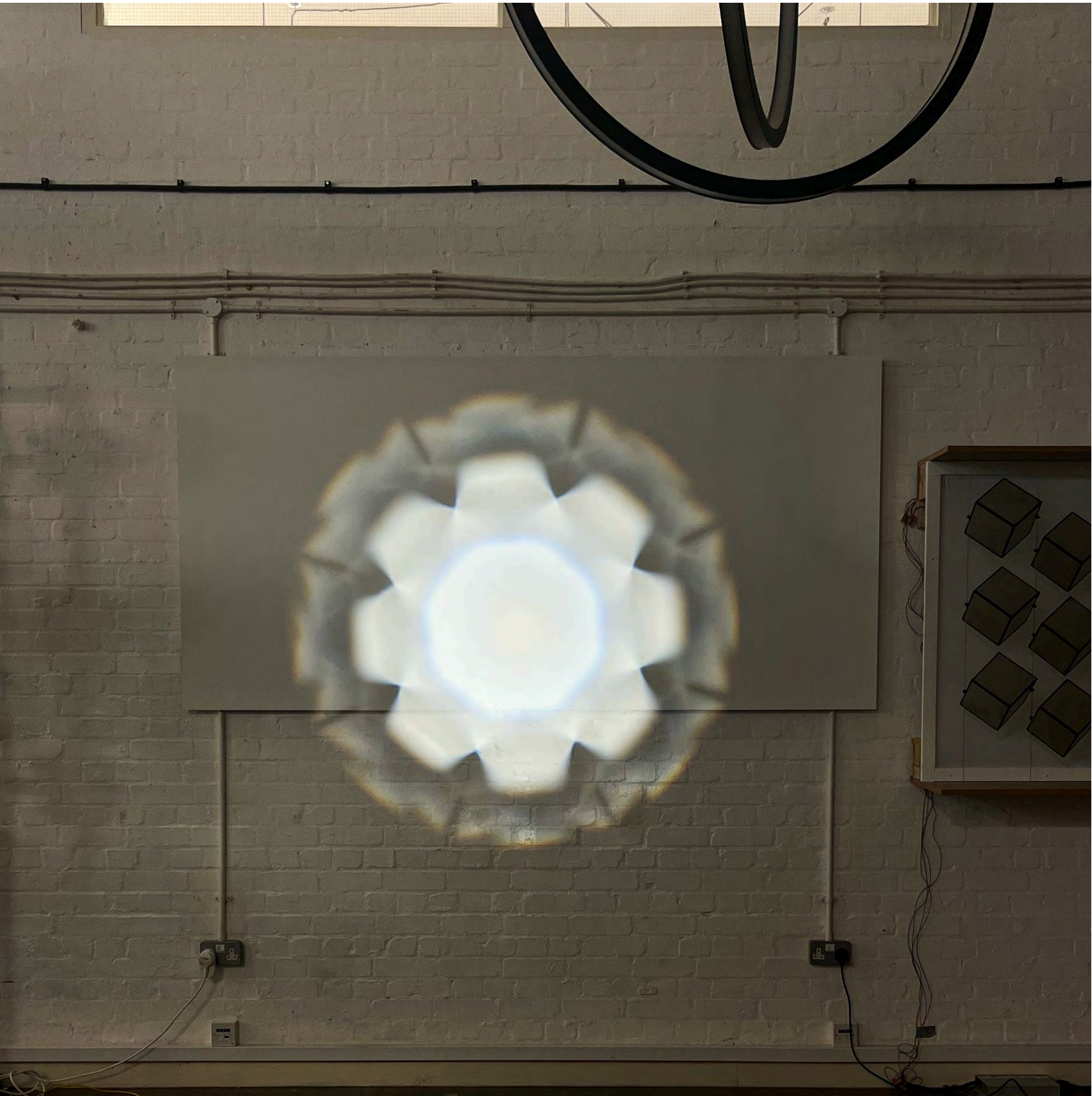
**Gobo Projection Sizes**

There are 3 gobo projection sizes. 3000mm, 2250mm, 1500mm. Due to the gobo sizes and the tilt that is needed for the luminaire, a zoom system is needed.

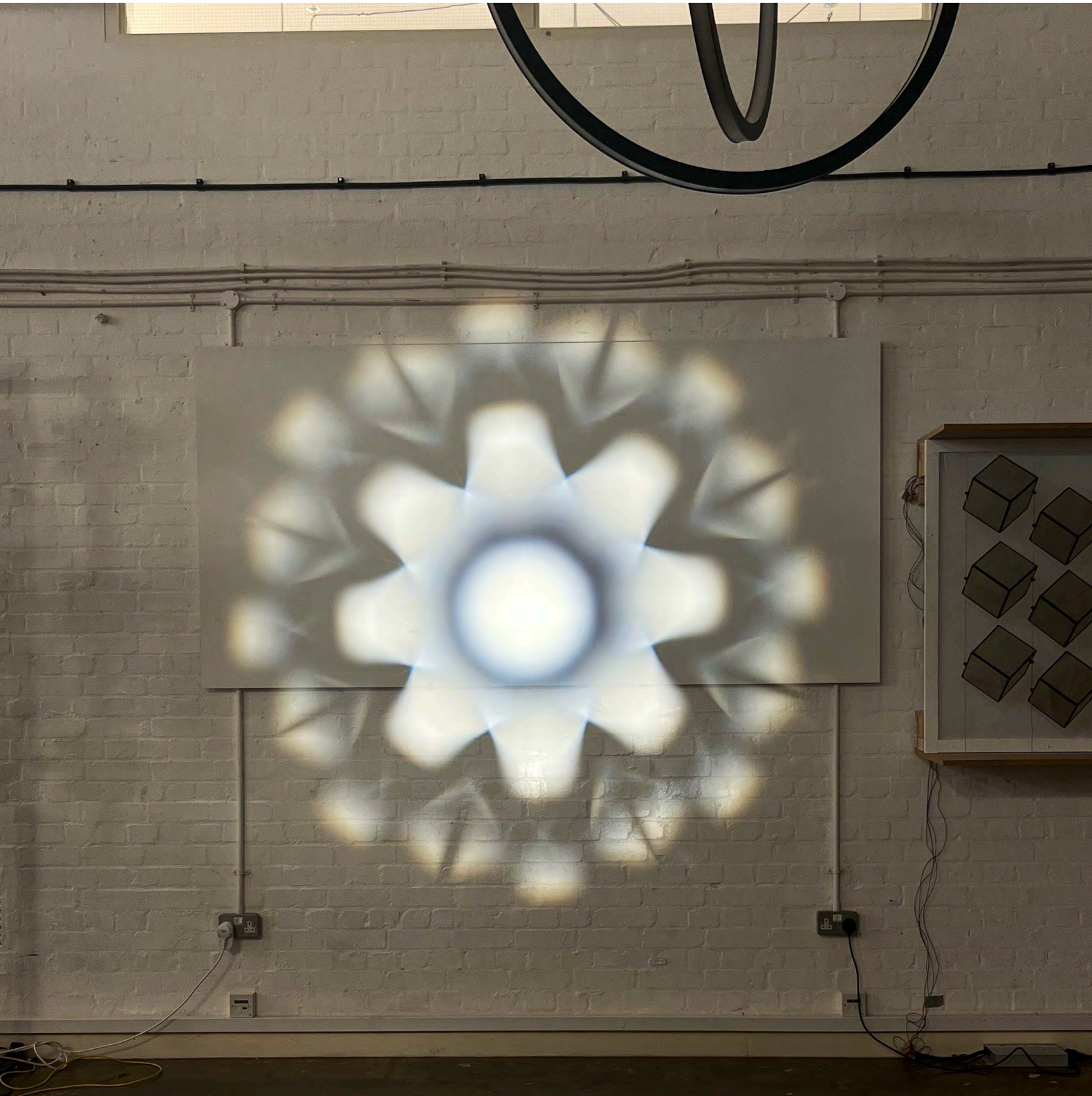


# TECHNICAL DEVELOPMENT | LIGHT FIXTURE

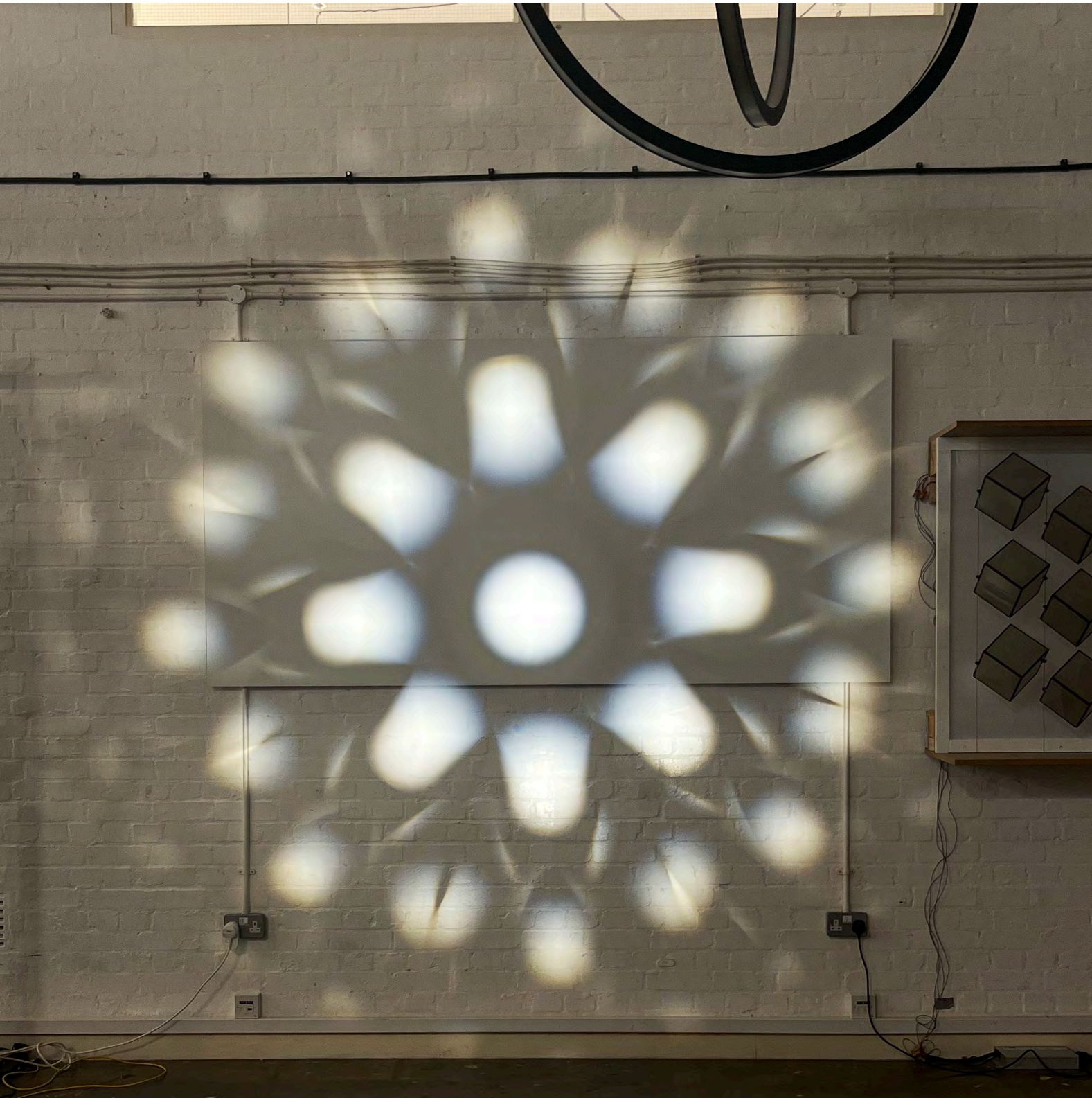
Mike Stoane light fixture design development based on JBS requirements.  
Light fixture prototype 2 sample received Jun 2023 with improved lux levels.



300 Lux measured at centre of projection at 5m (50% increase from initial prototype)



580 Lux measured at centre of projection at 5m (70% increase from initial prototype)



1416 Lux measured at centre of projection at 5m (50% increase from initial prototype)

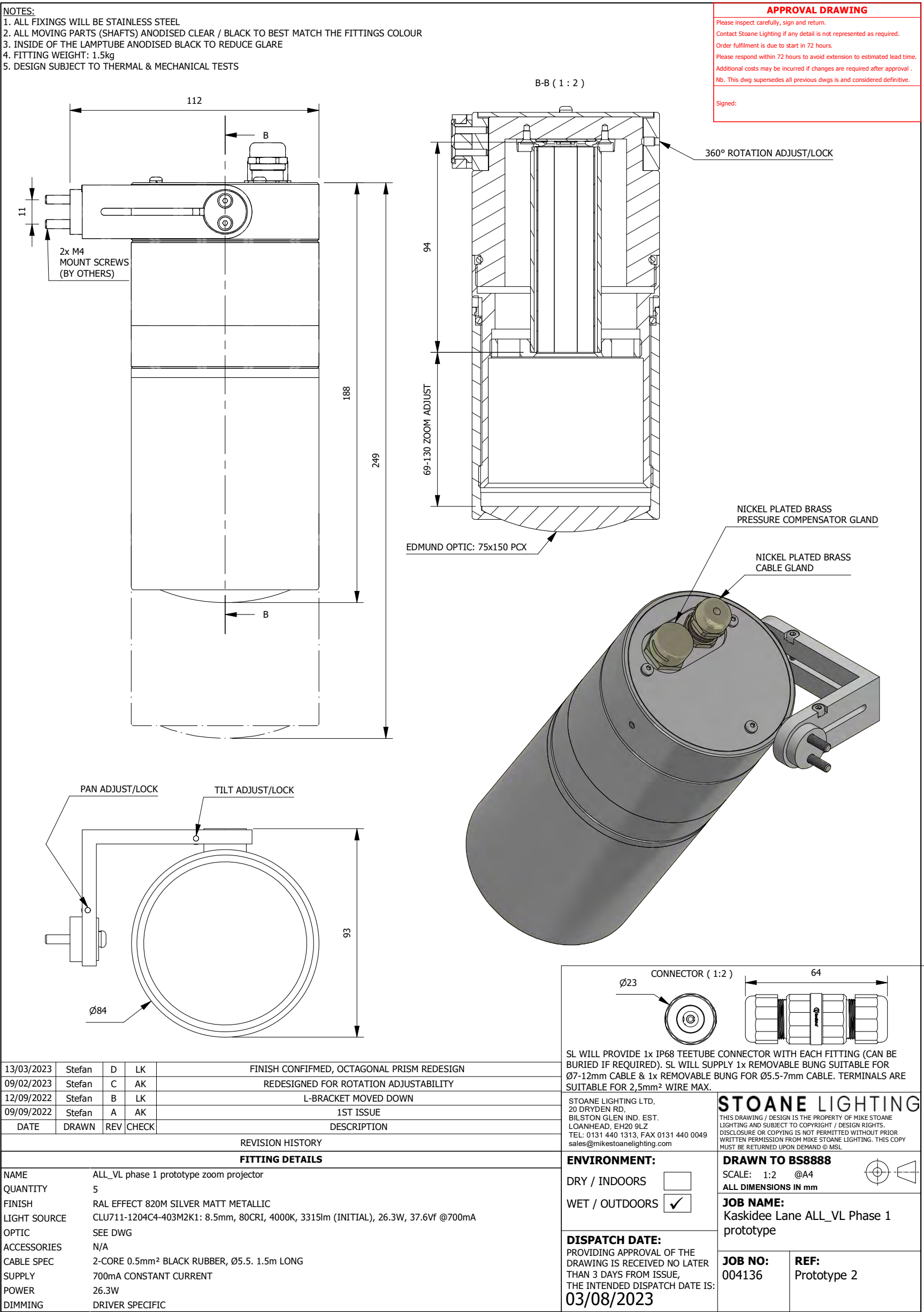


# DRAWING FOR MANUFACTURE

Stoane Lighting's drawing for manufacture of the bespoke luminaire unit.



JASON  
BRUGES  
STUDIO



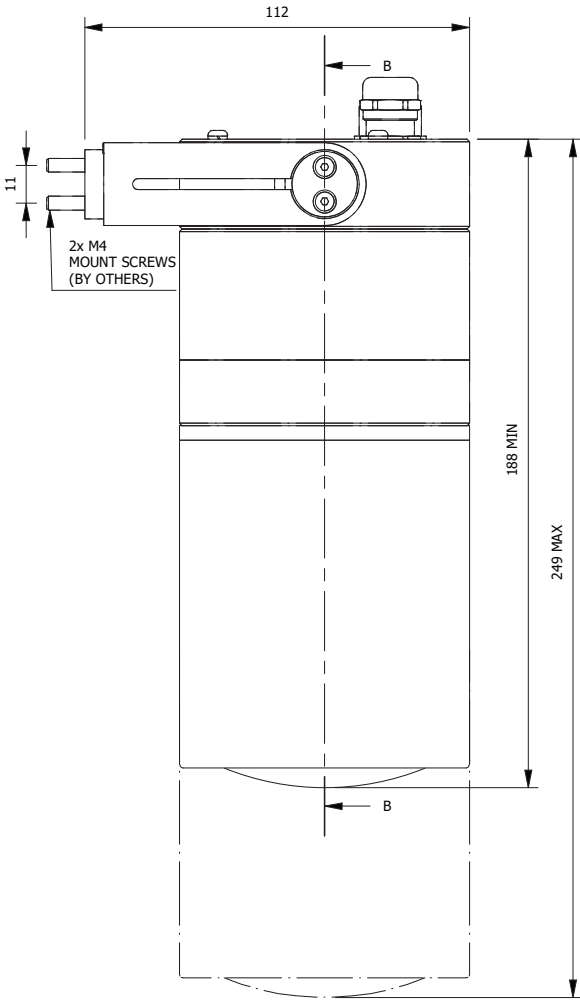
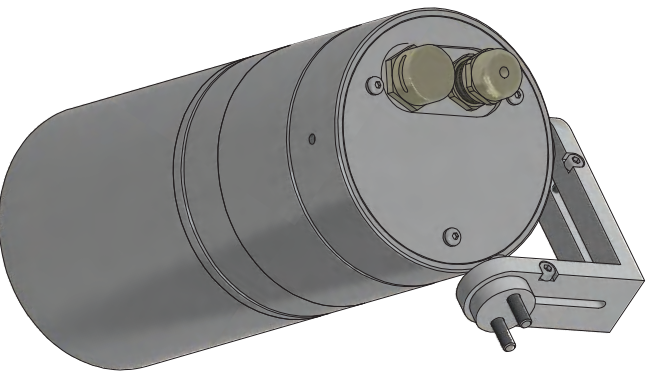


TECHNICAL DATA SHEET

Technical data sheet for the bespoke luminaire unit.

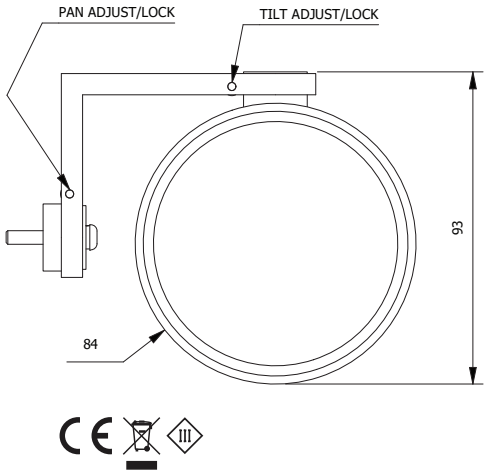
E031419 - Keskidee Lane ALL\_VAL Phase  
2 Prototype Projector

STOANE LIGHTING  
EQUIPMENT DESIGN + MANUFACTURE



Order Code	E031419 - ALL_VL phase 2 prototype
------------	------------------------------------

Ref :	ALL_VL phase 2 prototype
Materials:	Aluminium, Stainless steel, glass, nickel plated brass
Light source:	CLU711-1204C4-403M2K1: 8.5mm,
Output:	3315lm (initial)
Wattage:	26.3W
Forward Voltage:	37.6Vf
CRI Ra:	80 CRI
Colour Temp:	4000K
IP Rating:	IP66
Finish:	RAL effect 820m silver matt metallic
Dimming:	Driver specific (by others)
Supply:	700mA constant current remote driver
Locking:	2.5mm Allen key required
Available tilt:	± 90°
Weight:	1.5kg
Description:	Bespoke zoom projector (for intergration into larger assembly by others)
Accessories:	N/A
Quantity:	5
Cable:	2 core (0.5mm²) black rubber, 1.5m long, Ø5.5mm
Connector:	IP68 Tee tube connector

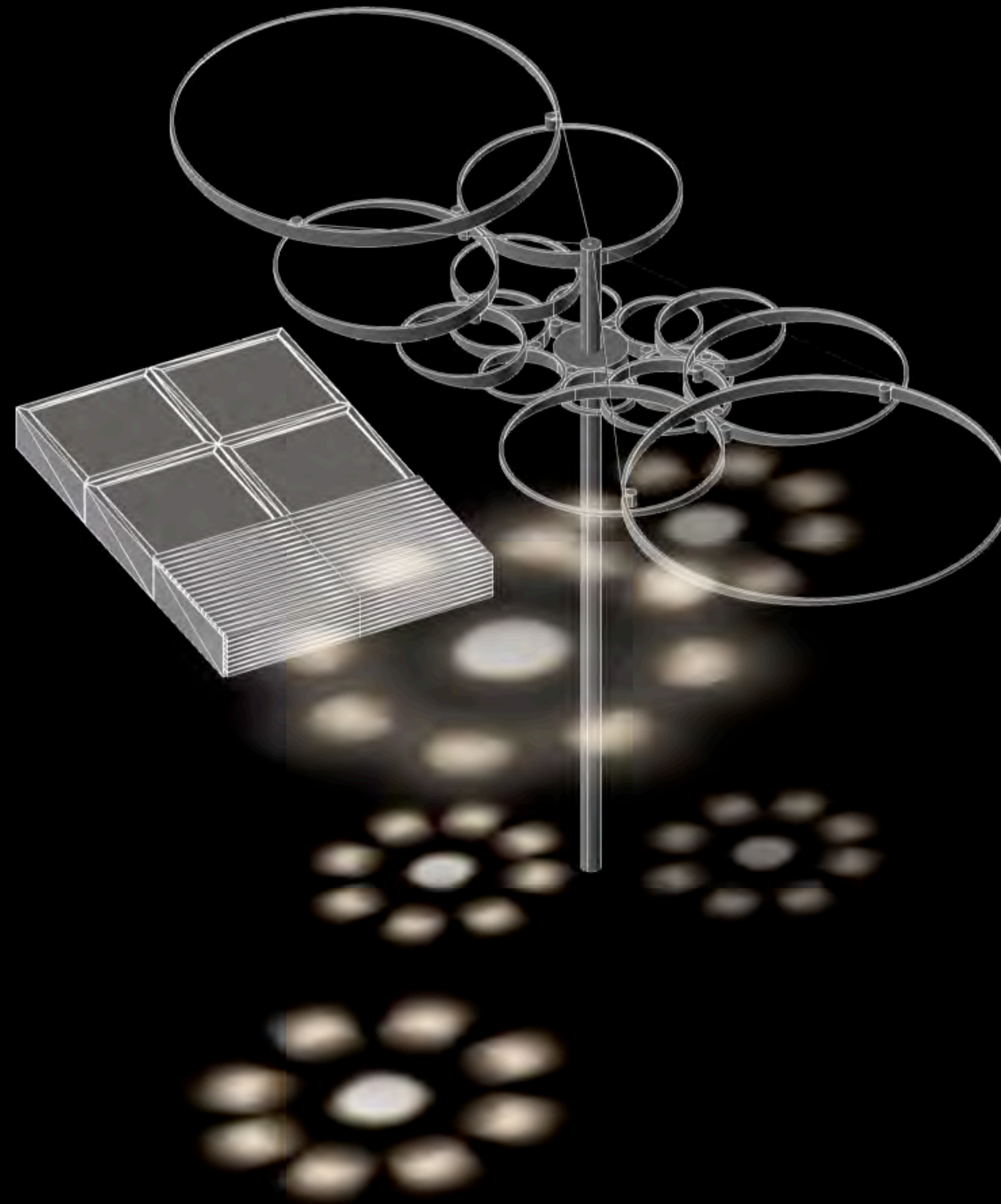


Non-Standard Specification Sheet - Circulation Record	Date
Drawn: Amy	11/01/2024
Checked: Craig / Lisa	11/01/2024
Circulated to: Amy-Rose, Jason Bruges Studio	11/01/2024



## LIGHTING ARRANGEMENTS | AMBIENT MODE

In Ambient Mode, the smaller static projections fade in and out creating subtle animated patterns on the paving.

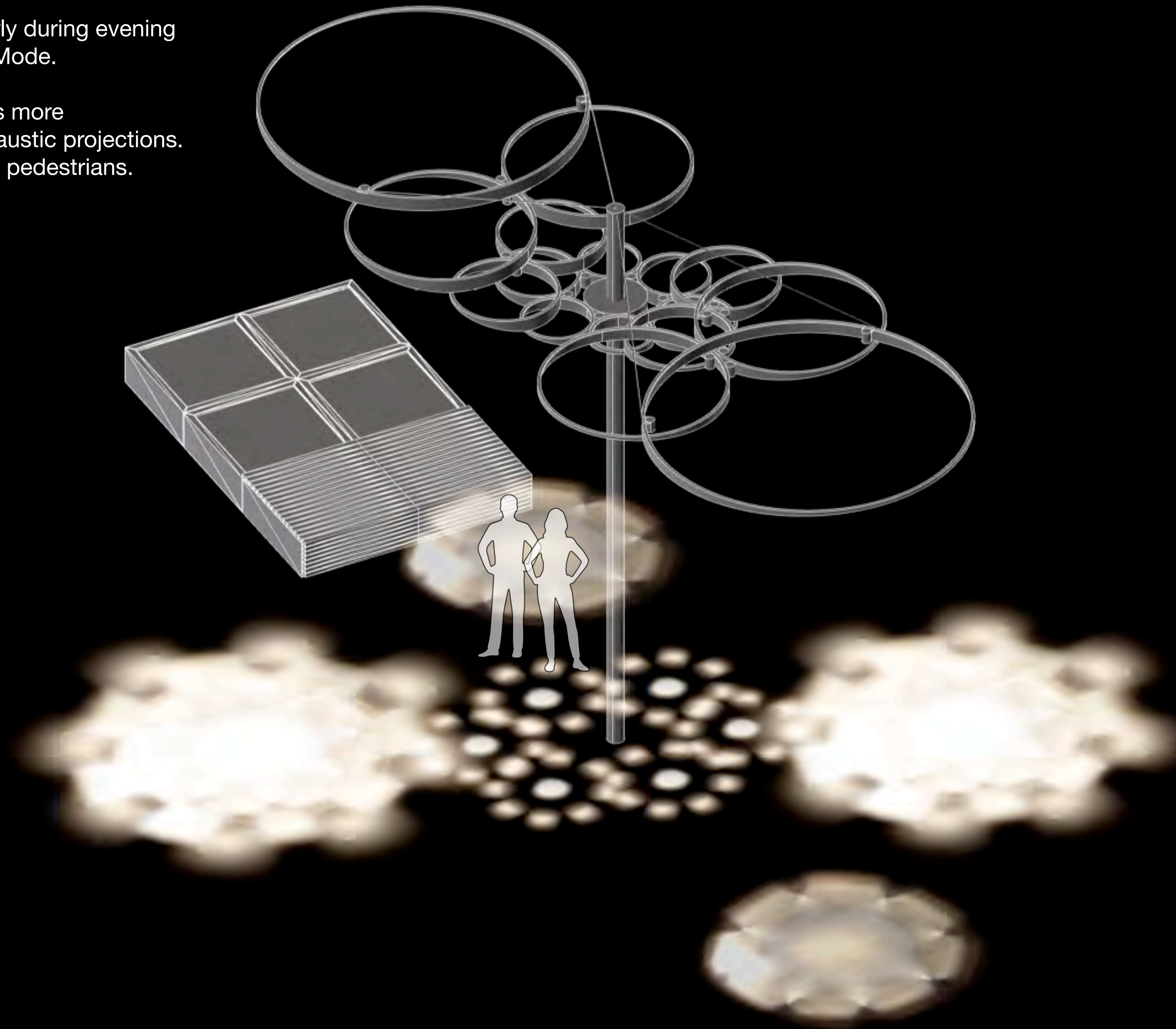




## LIGHTING ARRANGEMENTS | PERFORMANCE MODE

A short Performance Mode takes place hourly during evening peak hours to add variation to the Ambient Mode.

During this period, the artwork's behaviour is more choreographed and produces blossoming caustic projections. It does not track or respond to movement of pedestrians.

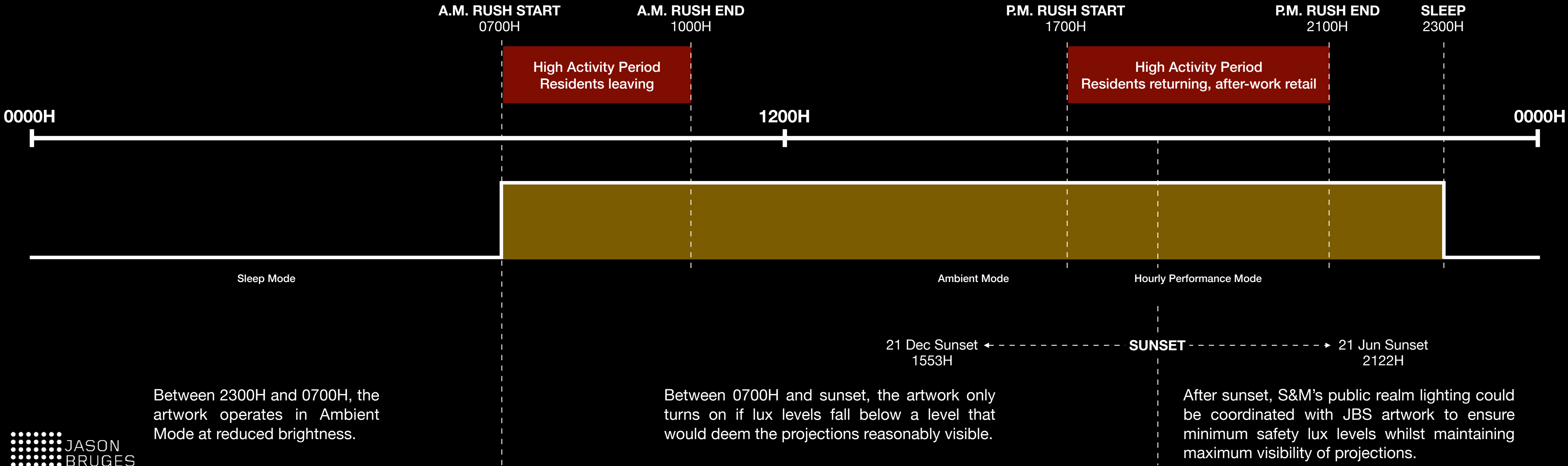




# LIGHTING ARRANGEMENTS | TIMELINE OF MODES

Timeline showing artwork activity and operation modes over a period of 24 hours.

The artwork works primarily after sunset. However, it could turn on during the day if lux levels fall below a level that deems the projections visible.





# CREDENTIALS

## Jason Bruges Studio

Netil House  
1 Netil Lane  
London  
E8 3RL

T +44 (0)20 7490 4590

info@jasonbruges.com  
www.jasonbruges.com



@jasonbruges



jasonbrugesstudio

Showreel:

<https://vimeo.com/135494964>

