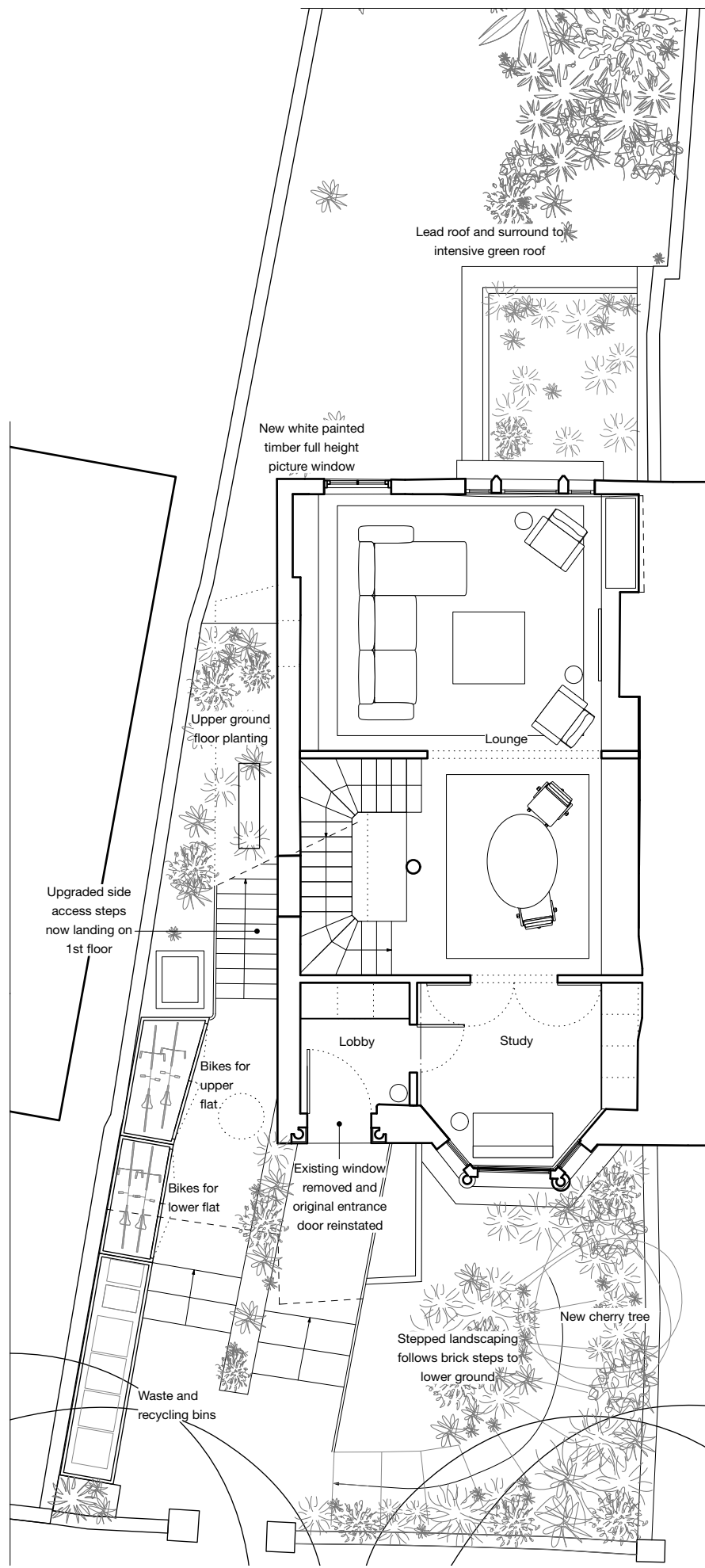
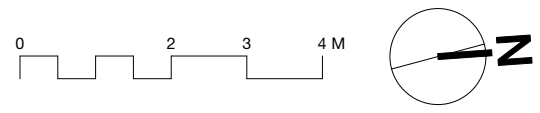


1. All new and existing sash windows overhauled to incorporate argon filled low-e glass slim-line double glazing with white painted timber.
2. All new brickwork to match existing using second hand colour matched stock brick and colour matched mortar laid with skilled bricklayers.
3. Lime render used to repair and replace all degraded decorative banding and projections. Exterior Keim or similar paints used to provide high quality topcoat.
4. All visible rainwater goods to be in black painted cast iron.
5. All handrails and guarding to be in minimally dimensioned black painted galvanized mild steel.

**1 Proposed Lower Ground**  
Scale: 1:100



**2 Proposed Ground**  
Scale: 1:100



**Please Note**  
Do not Scale from this drawing  
Do not build from this drawing unless issued for construction  
All setting out, dimensions and levels must be checked on site. Any discrepancies to be verified with the lead designer or architect appointed for the construction stage.

This drawing must not be copied or reproduced in whole or part by any method whatsoever, without the prior written approval of Norman-Prahm architects.

No.	Date	By	Notes
B	18/01/2024	TN	- Rear conservatory roof updated - Scale bar added
C	19/01/2024	TN	- Side access retained and raised to 1st floor level - New side access metal stair with decorative metal work and lead canopy - Windows removed on side elevation - Conservation roof light positions shifted on 3rd floor - Utility access door replaces previous glazing. - Existing foot print of now utility retained

Drawing Stamp

**Planning**

Design Firm  
**Norman-Prahm architects**  
www.normanprahm.com 07958522689

Project Title  
**60 South Hill Park**  
London  
NW3 2SJ

Drawing Title  
**Prop. Ground / Lower Ground**

RIBA Stage	3	Project ID	SHP
Drawn By	TN	Scale	1:100
Reviewed By	TN	Drawing No.	11_00
Issue Date	15/01/2024	Revision	C
CAD File Name	SHP_GA_SD.vwx		