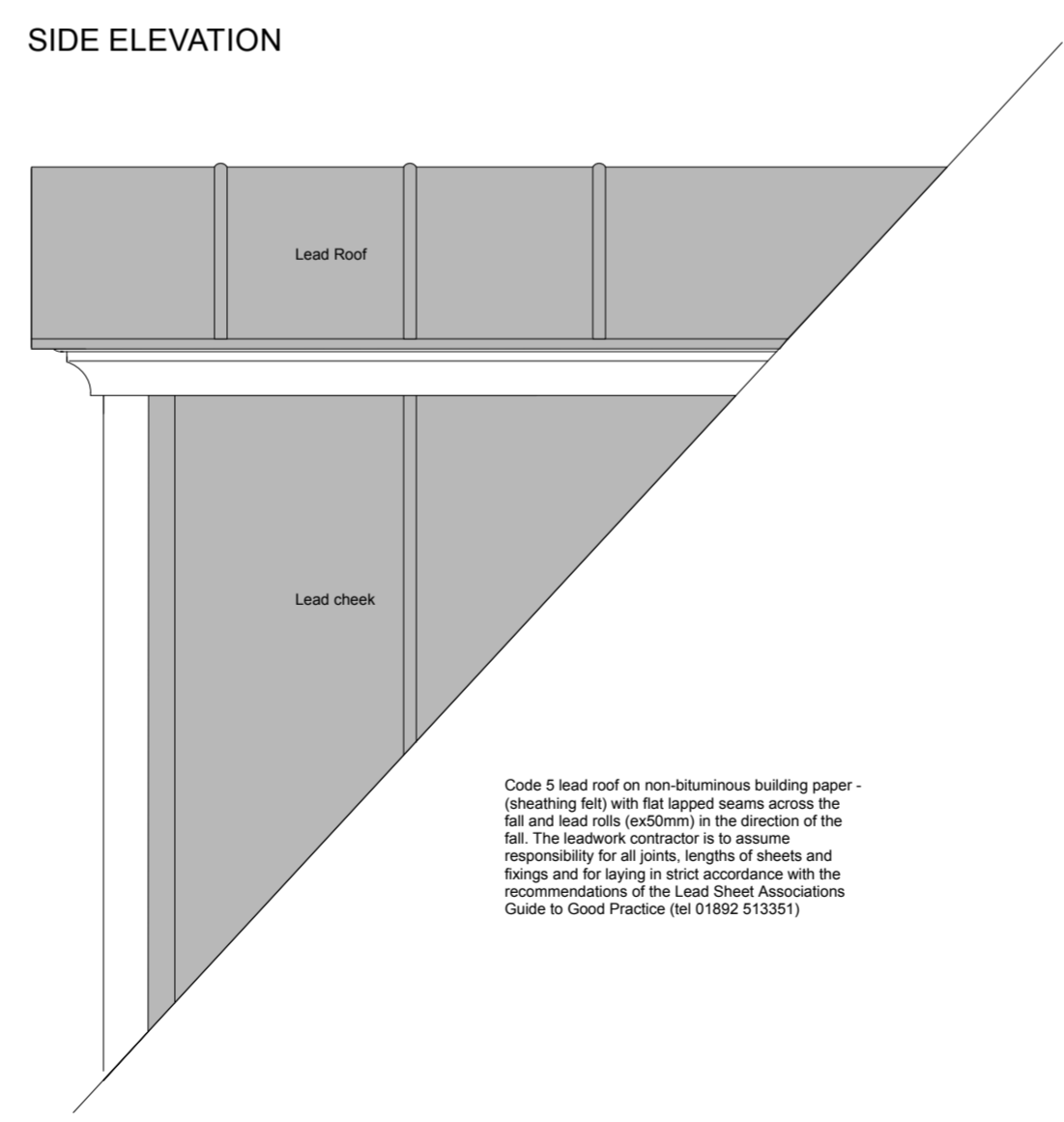
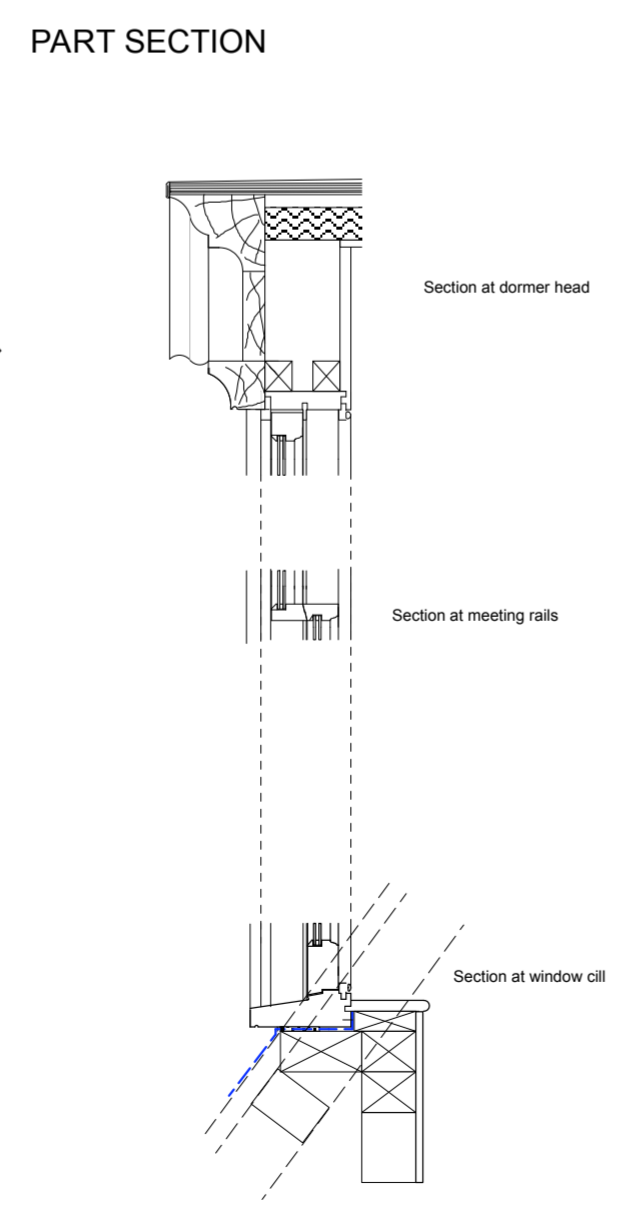
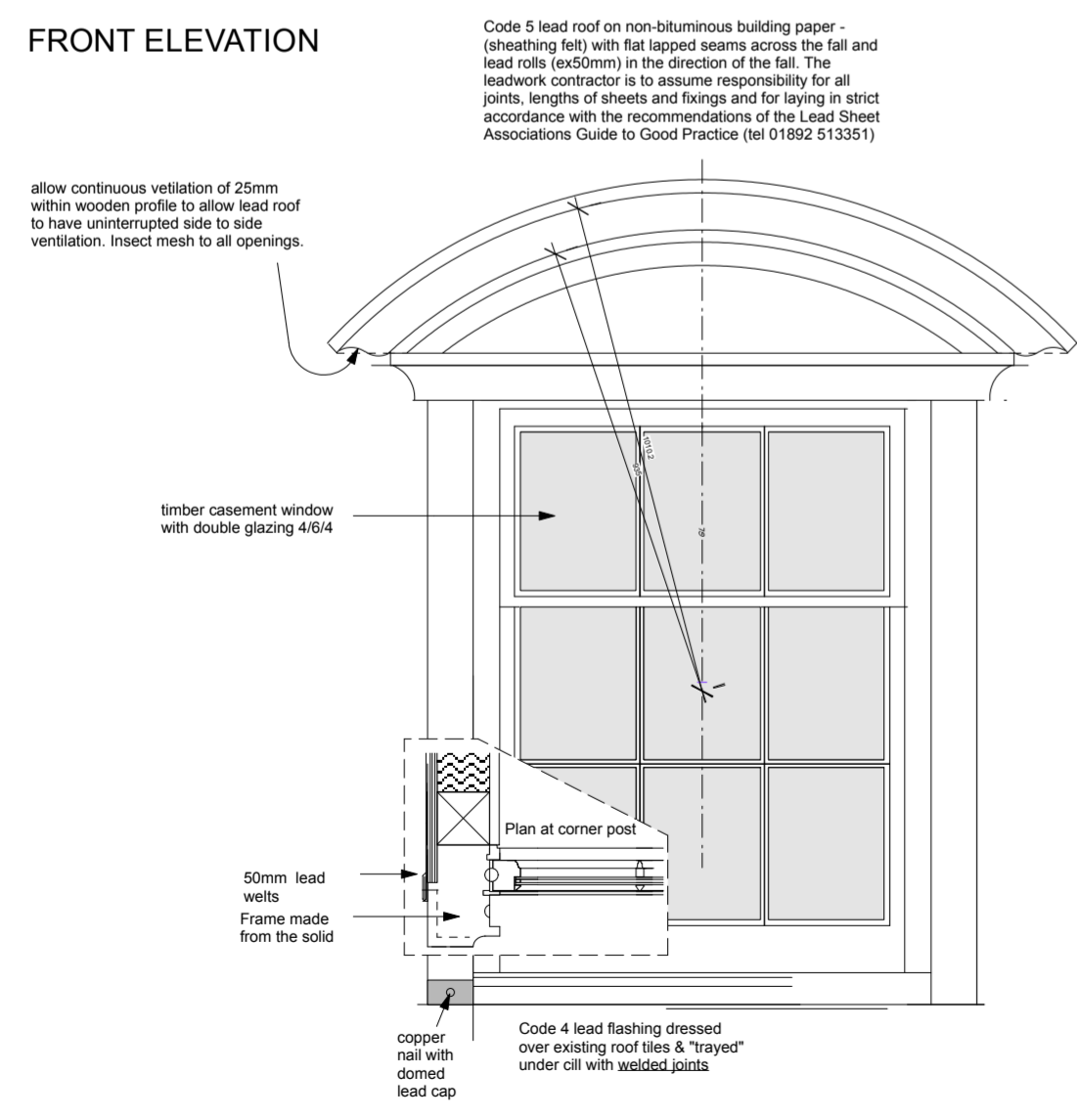


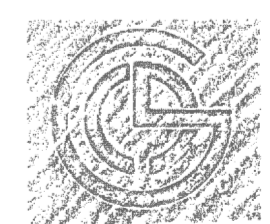
**TYPICAL GUTTER AND PARAPET DETAIL TO NEW EXTENSION**

**TYPICAL DETAILS OF DORMERS WITHIN NEW SIDE EXTENSION**



Code 5 lead roof on non-bituminous building paper - (sheathing felt) with flat lapped seams across the fall and lead rolls (ex50mm) in the direction of the fall. The leadwork contractor is to assume responsibility for all joints, lengths of sheets and fixings and for laying in strict accordance with the recommendations of the Lead Sheet Associations Guide to Good Practice (tel 01892 513351)

**TYPICAL DETAILS OF NEW DORMERS WITHIN MAIN ROOF**



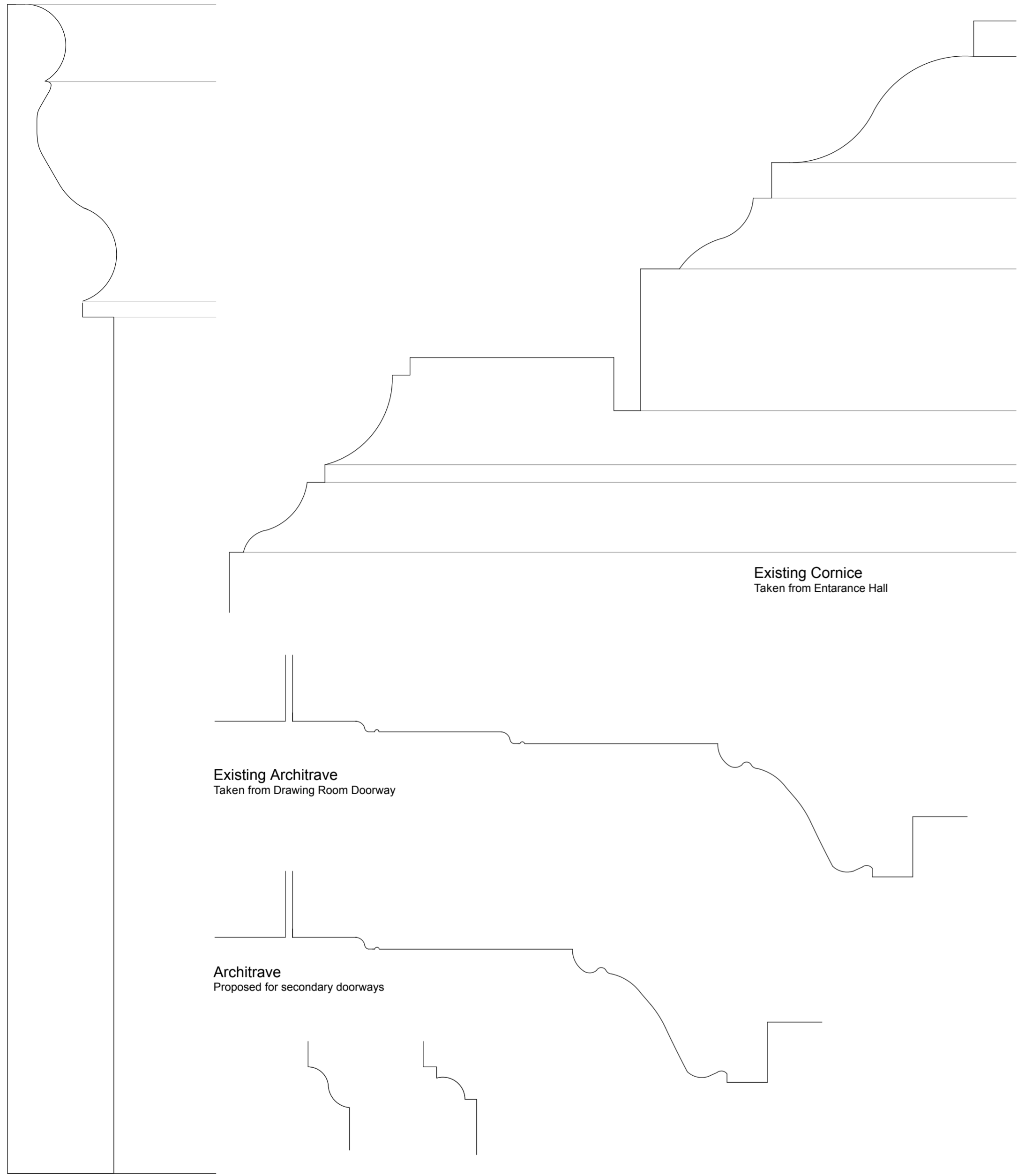
THE CHARLTON BROWN PARTNERSHIP  
ARCHITECTS

The Old Chapel Shepherds Walk Hampstead London NW3 5UE T 020 7794 1234 F 020 7435 5085 E office@charltonbrown.com

Heath House, NW3

1017/D 01

Proposed new Dormer Windows



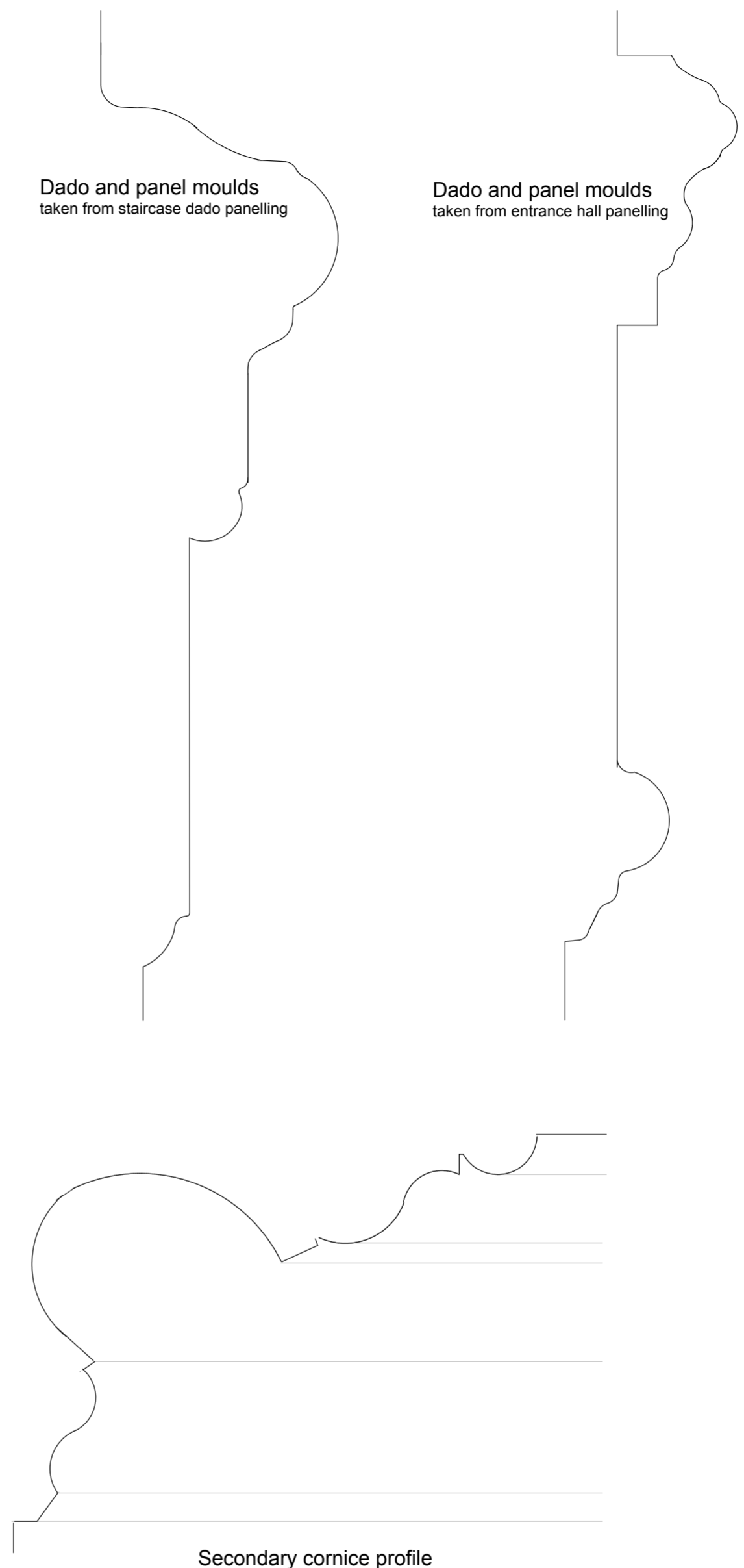
Existing skirting moulding profile

Existing skirting moulding profiles taken from Entrance/Staircase Hall

Existing Cornice  
Taken from Entrance Hall

Existing Architrave  
Taken from Drawing Room Doorway

Architrave  
Proposed for secondary doorways



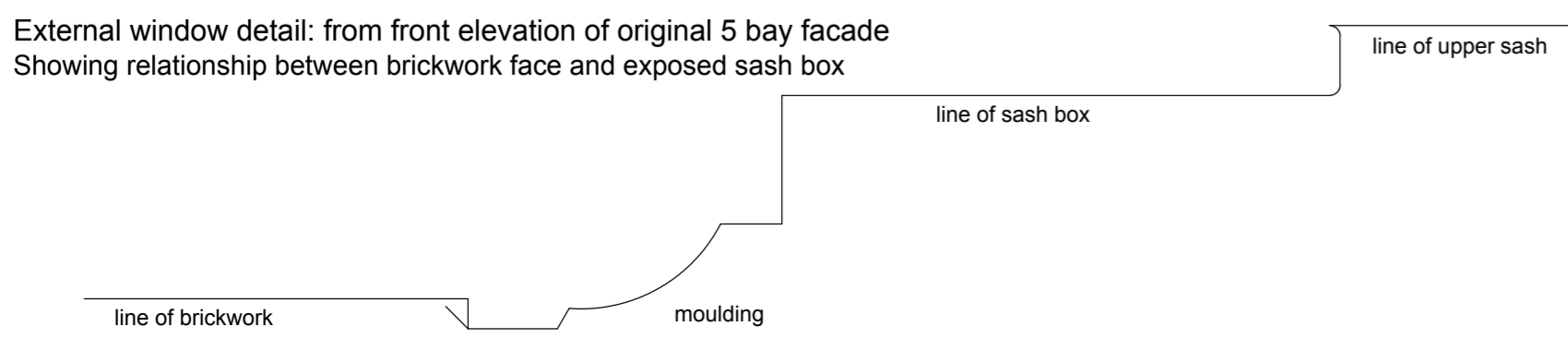
Dado and panel moulds  
taken from staircase dado panelling

Dado and panel moulds  
taken from entrance hall panelling

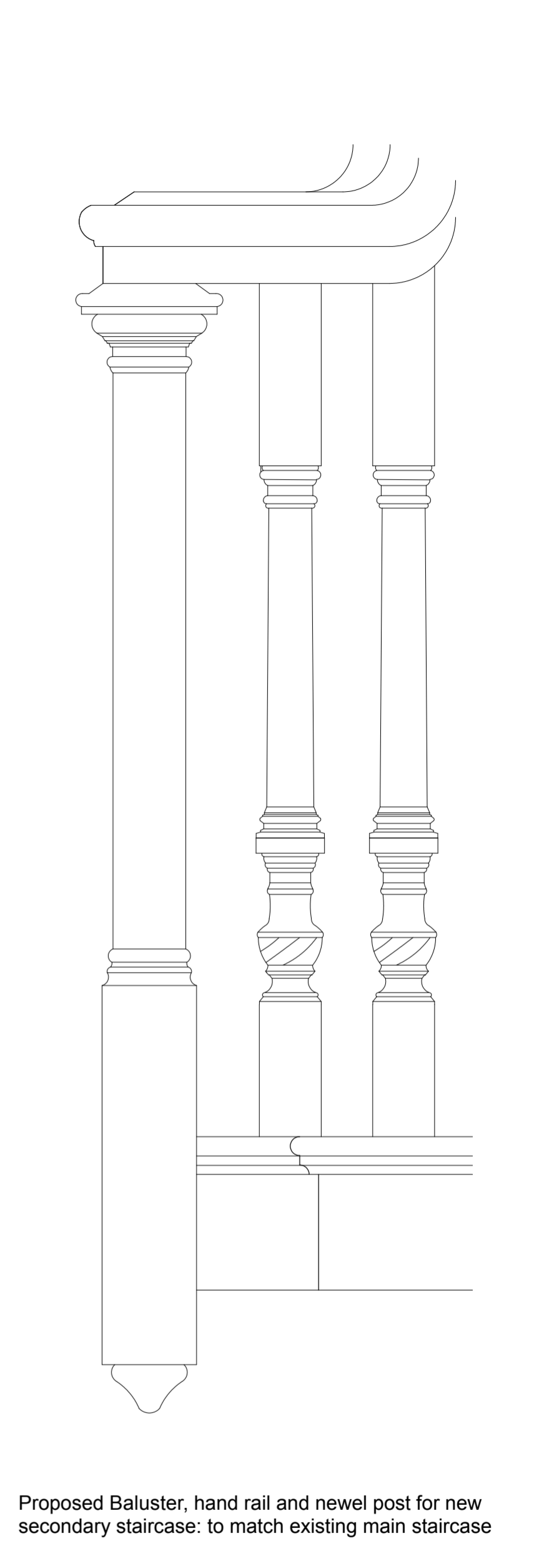
Secondary cornice profile

panel moulding 1  
taken from Drawing Room entrance reveal

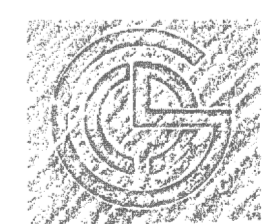
panel moulding 2  
taken from Dining Room entrance reveal



External window detail: from front elevation of original 5 bay facade  
Showing relationship between brickwork face and exposed sash box



Proposed Baluster, hand rail and newel post for new secondary staircase: to match existing main staircase



THE CHARLTON BROWN PARTNERSHIP  
ARCHITECTS

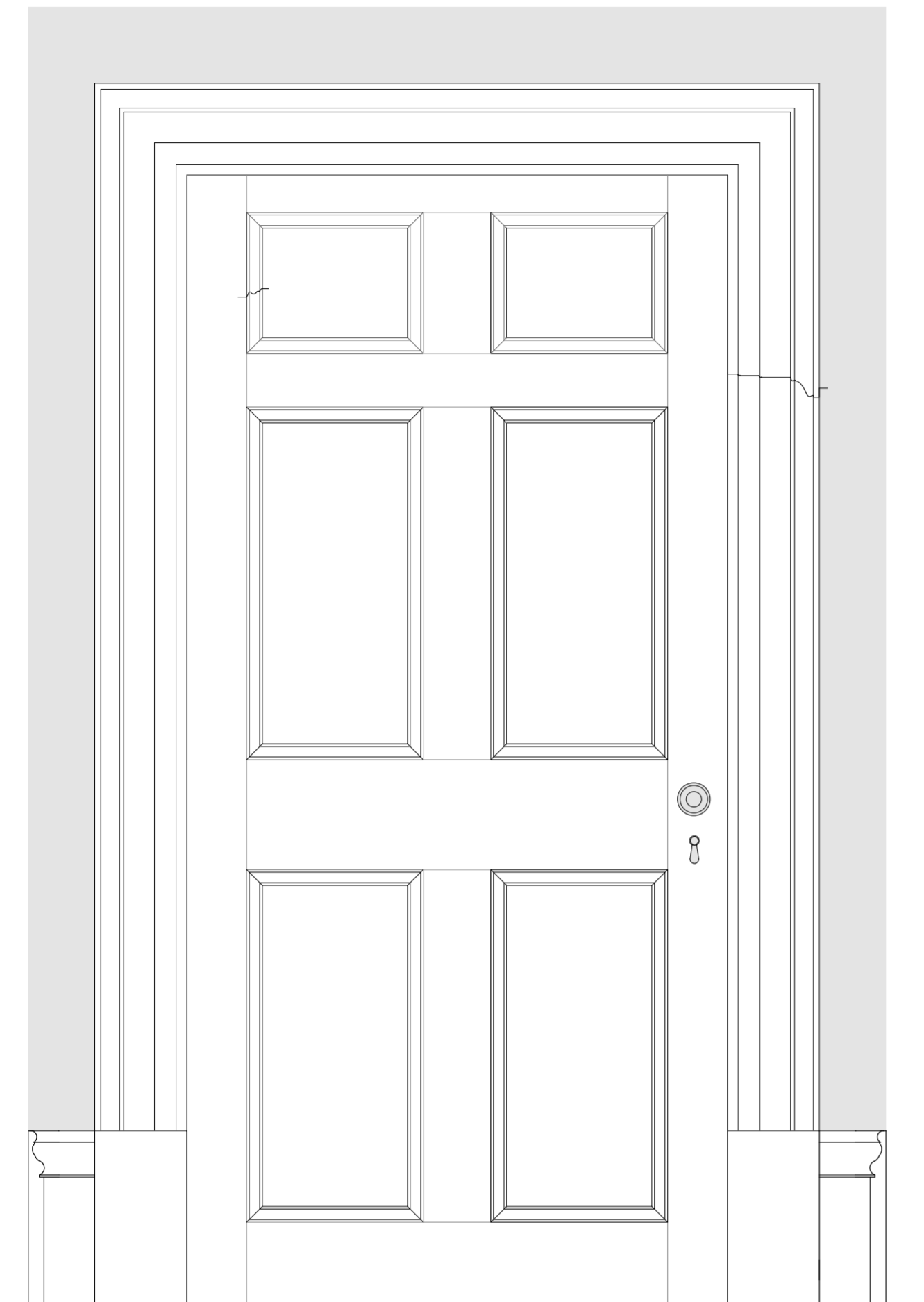
The Old Chapel Shepherds Walk Hampstead London NW3 5UE T 020 7794 1234 F 020 7435 5085 E office@charltonbrown.com

Heath House, NW3

1017/D 02

Typical moulding Details

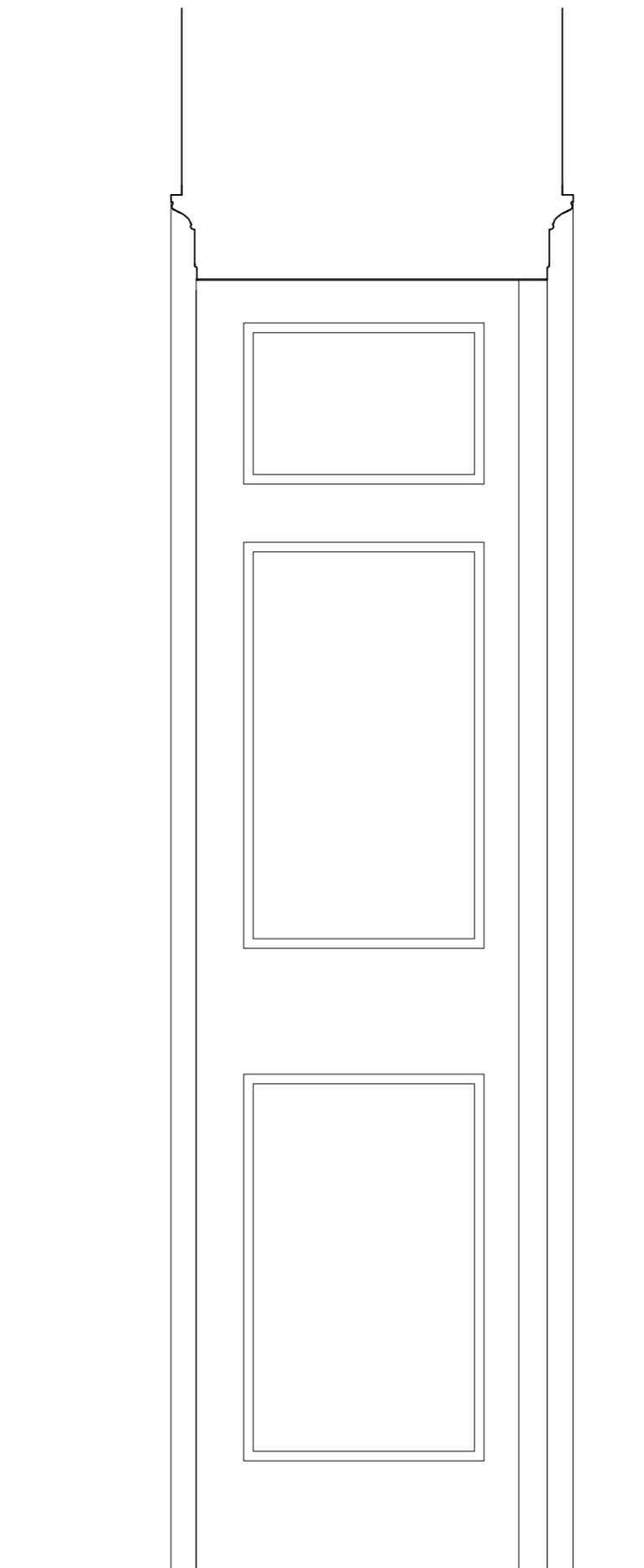
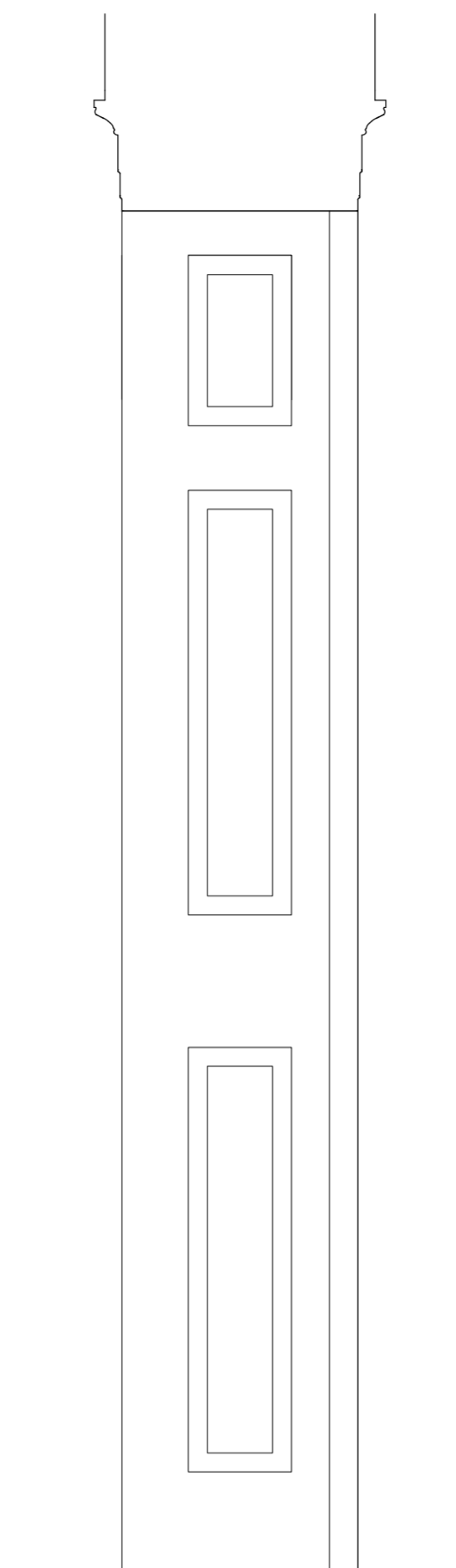
Date 8.1.07 Scale 1:1 & 1:5 This drawing is copyright Revisions



Door Type 1 : Main Reception Rooms.

Sizes determined by relevant door openings

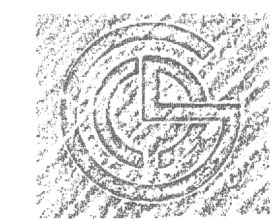
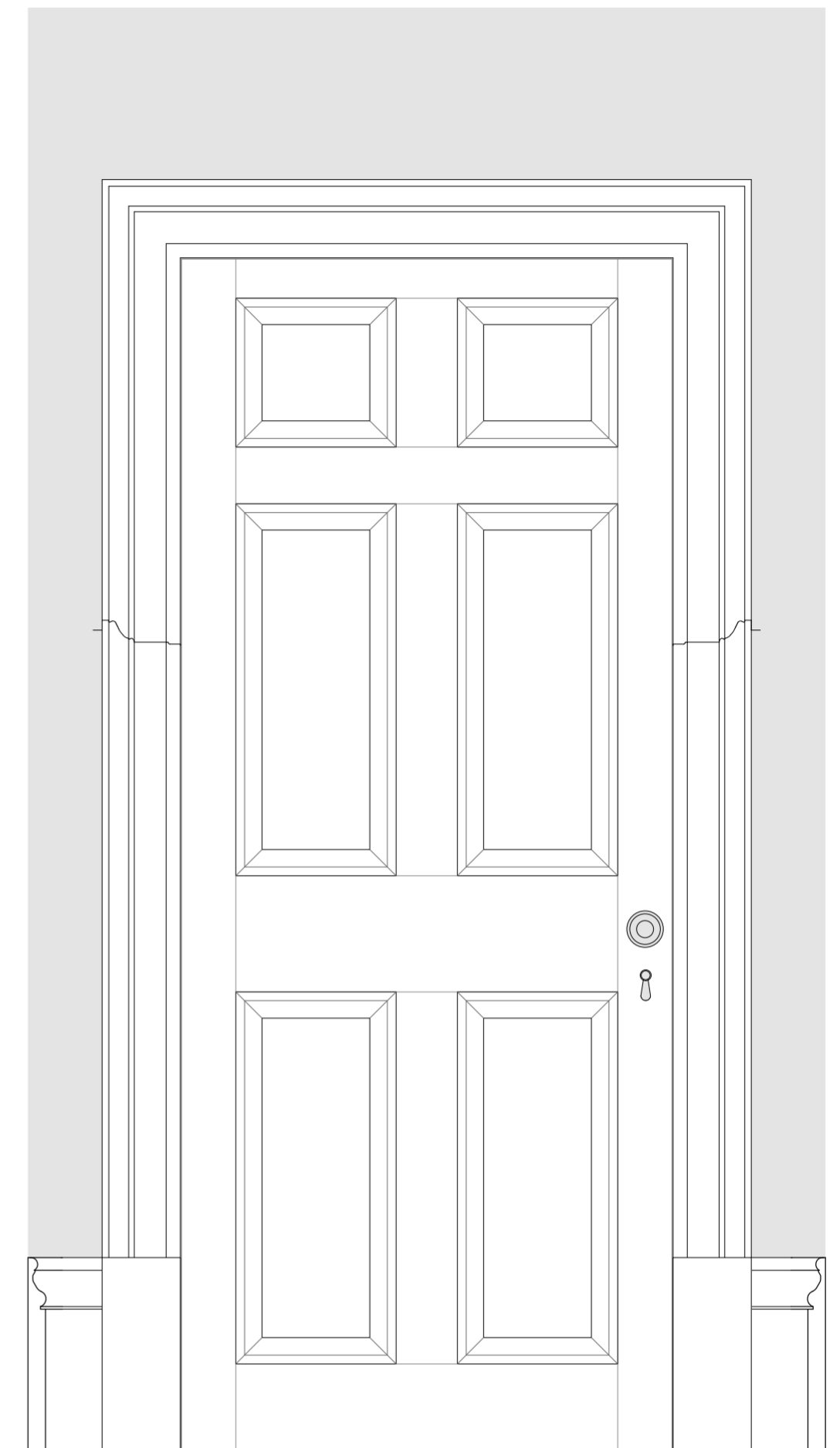
Panel moulding 1 (taken from existing Drawing Room Door Reveal).



Door Type 2 : Secondary Rooms.

Sizes determined by relevant door openings.

Panel moulding 2 (taken from existing Dining Room Door Reveal).



THE CHARLTON BROWN PARTNERSHIP  
ARCHITECTS

The Old Chapel Shepherds Walk Hampstead London NW3 5UE T 020 7794 1234 F 020 7435 5085 E office@charltonbrown.com

Heath House, NW3

1017/D 03

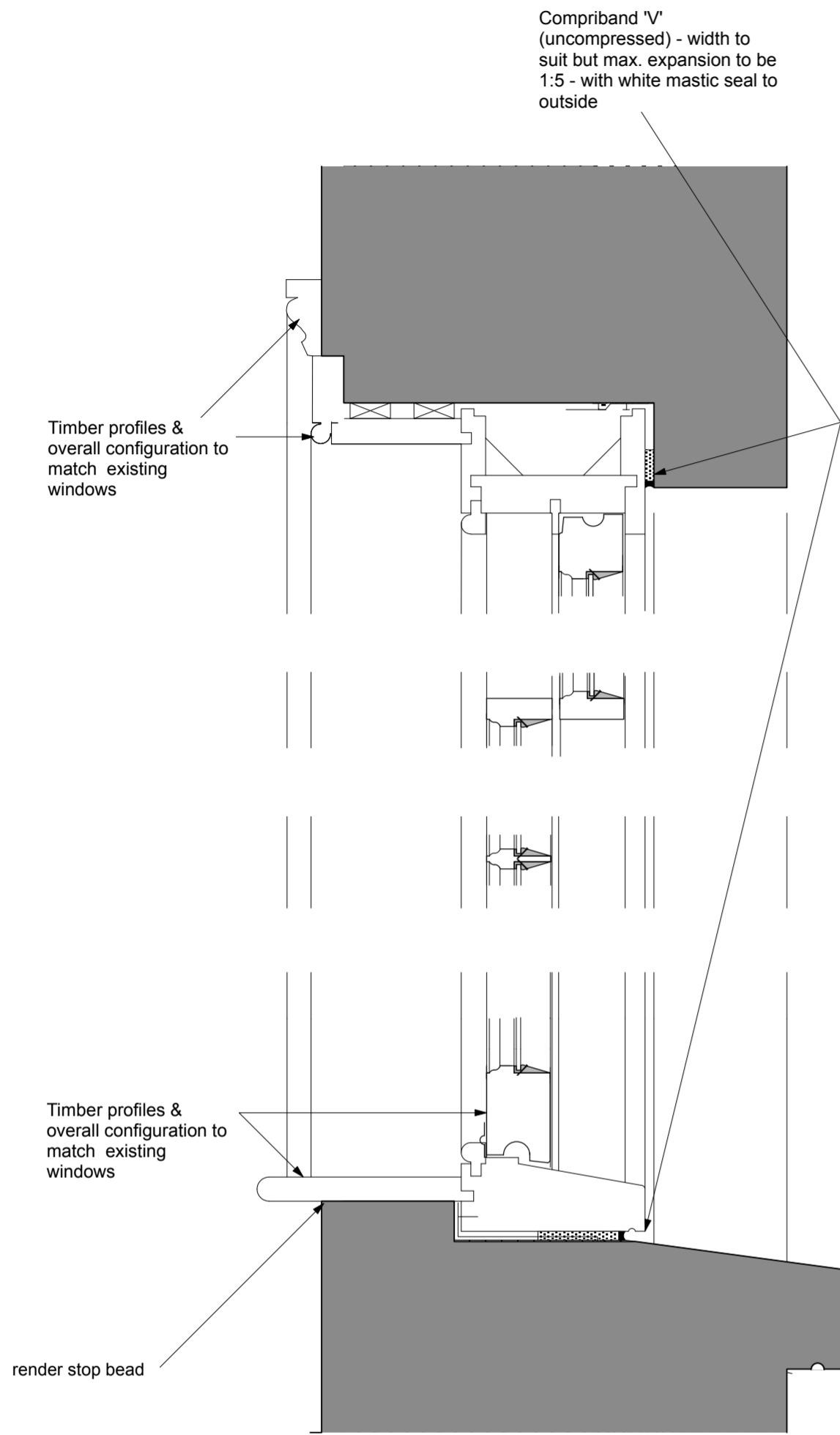
Typical Door & Door Details

Date 8.1.07

Scale 1:10

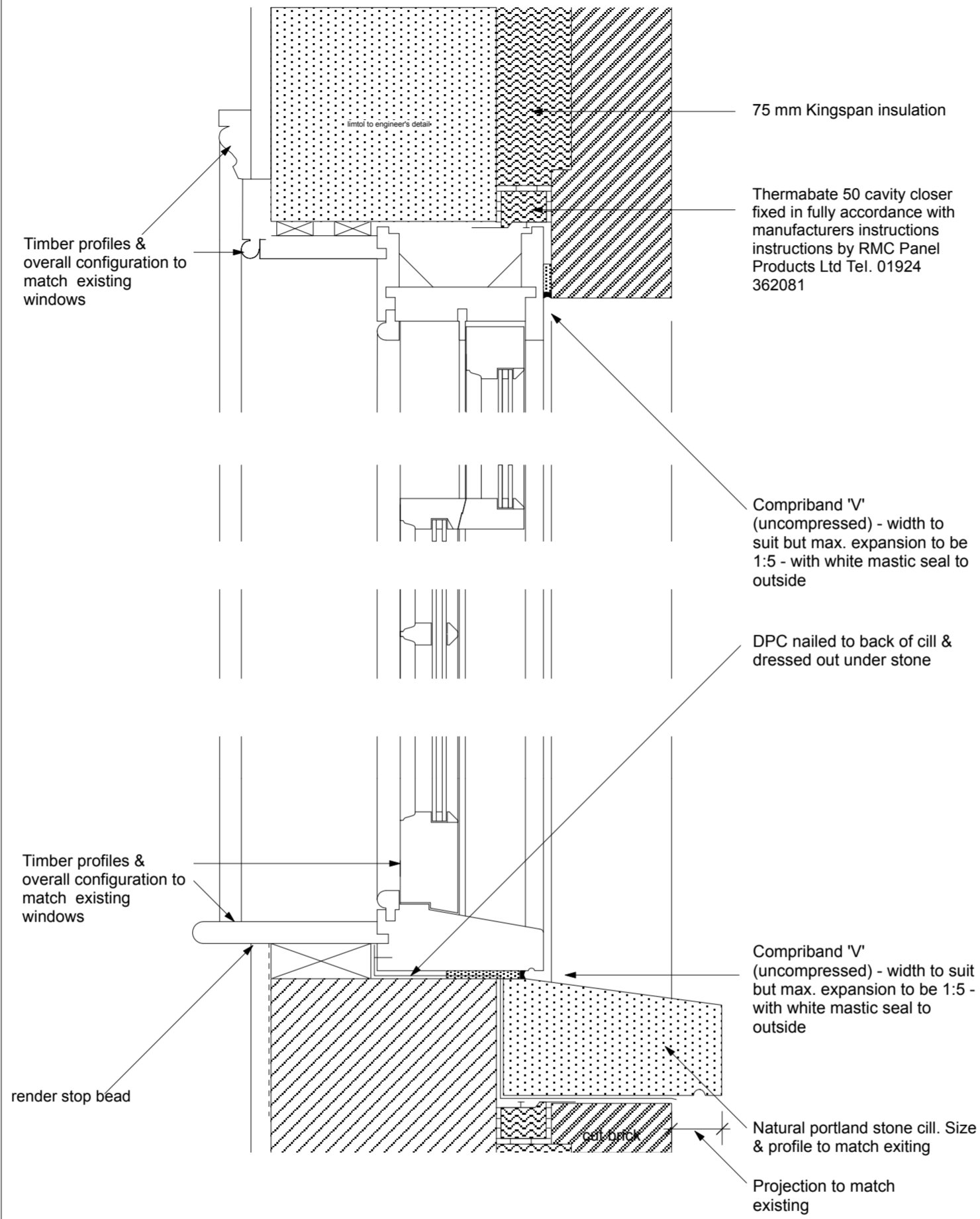
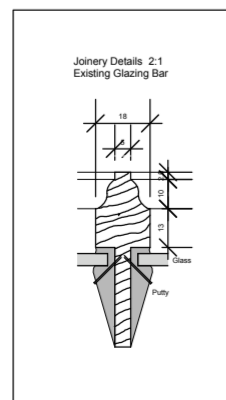
This drawing is copyright

Revisions



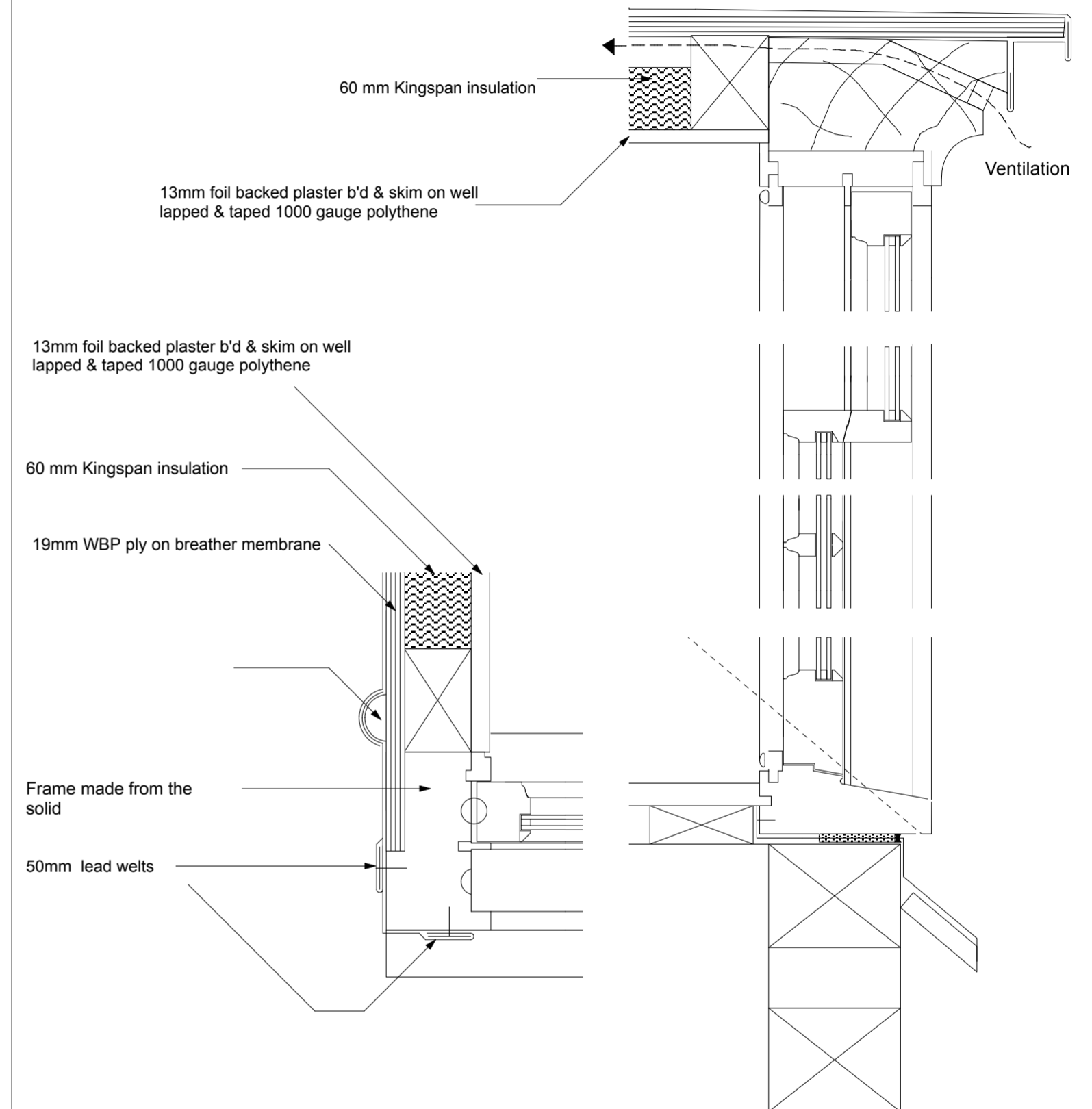
PART SECTION THROUGH HEAD, MEETING RAIL AND CILL

TYPICAL SASH SINGLE GLAZED REPLACEMENT WINDOW



PART SECTION THROUGH HEAD, MEETING RAIL AND CILL

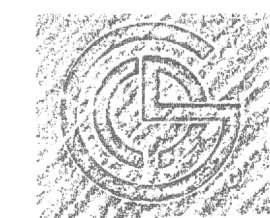
TYPICAL SASH WINDOW TO NEW EXTENSION



CORNER PLAN

PART SECTION THROUGH HEAD, MEETING RAIL AND CILL

TYPICAL NEW DORMER WINDOW TO NEW EXTENSION



THE CHARLTON BROWN PARTNERSHIP  
ARCHITECTS

The Old Chapel Shepherds Walk Hampstead London NW3 5UE T 020 7794 1234 F 020 7435 5085 E office@charltonbrown.com

Heath House, NW3

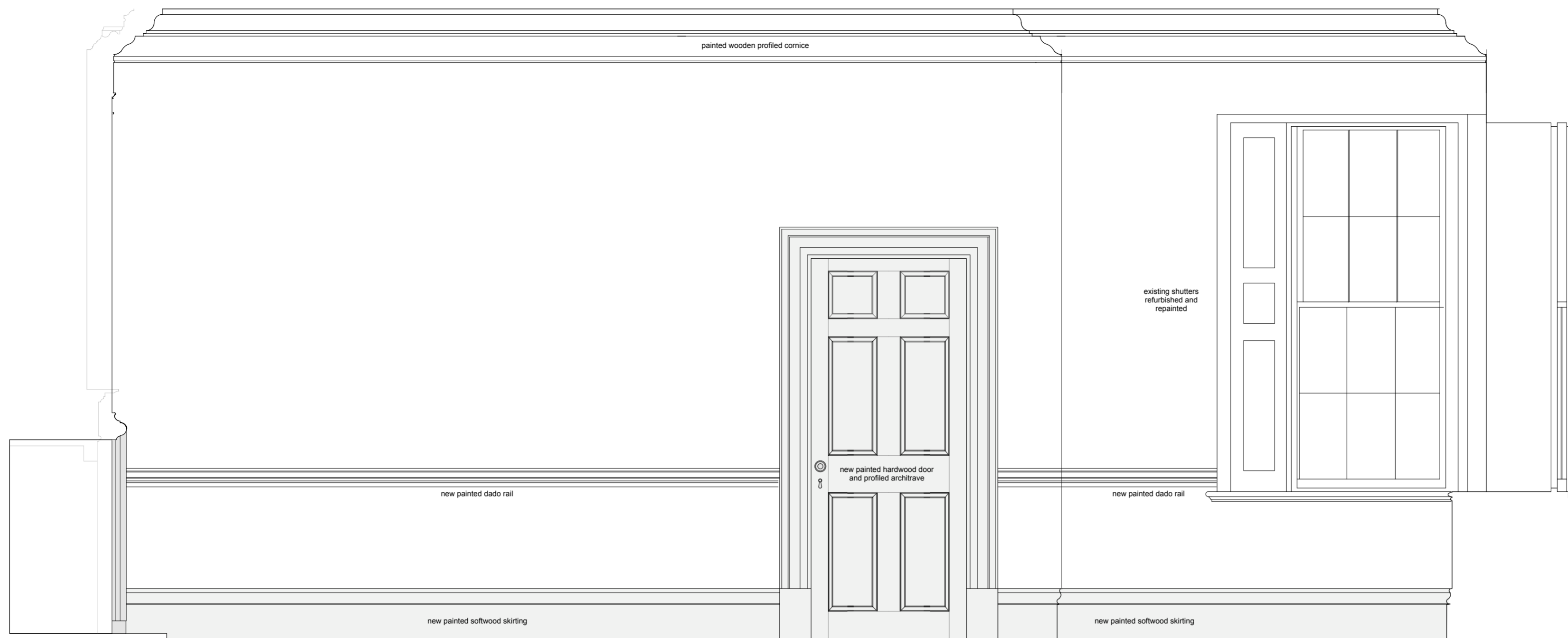
1017/D 04

Typical Window Details

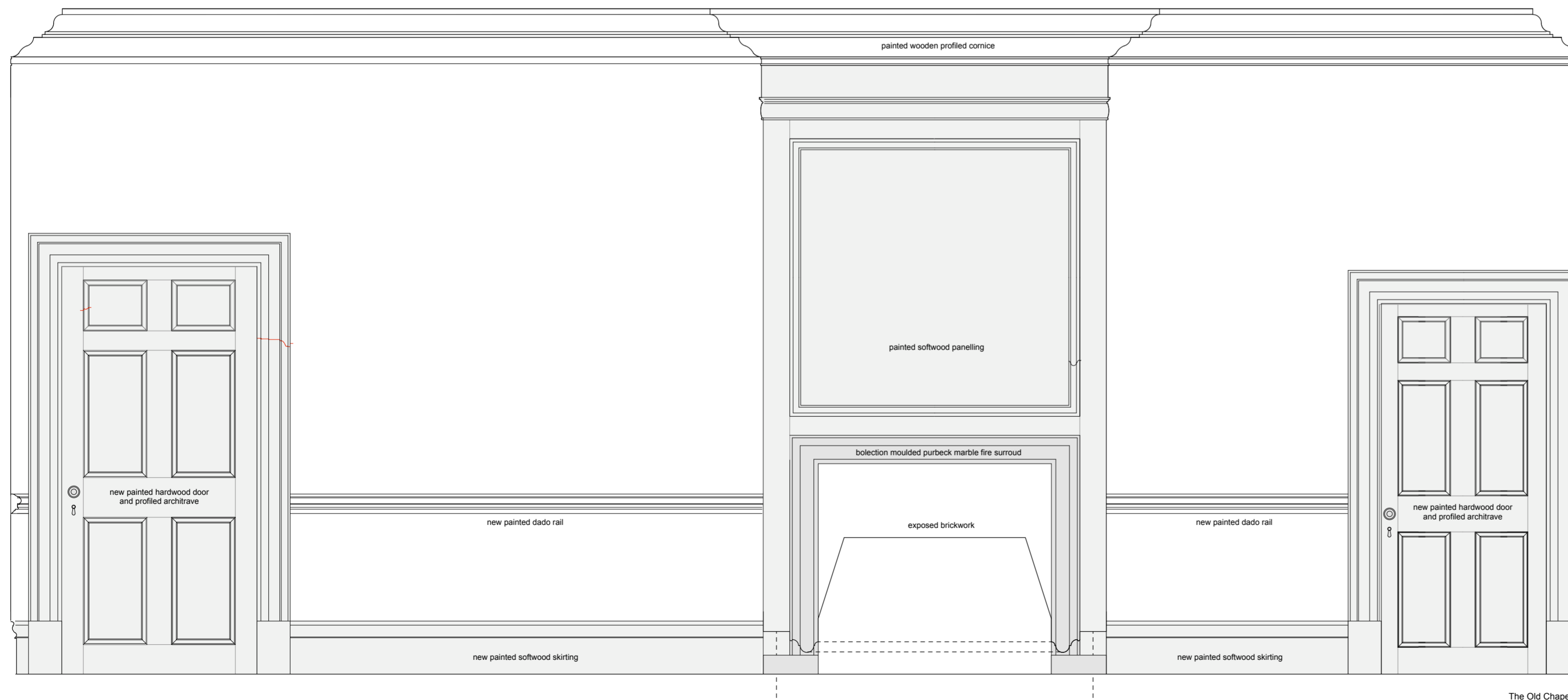
Date 8.1.07 Scale 1:5

This drawing is copyright

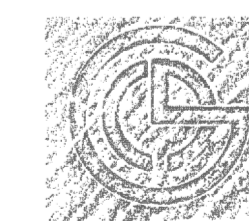
Revisions



Elevation A - North Elevation of Dining Room



Elevation B - West Elevation of Dining Room



THE CHARLTON BROWN PARTNERSHIP  
ARCHITECTS

The Old Chapel Shepherds Walk Hampstead London NW3 5UE T 020 7794 1234 F 020 7435 5085 E office@charltonbrown.com

Heath House, NW3

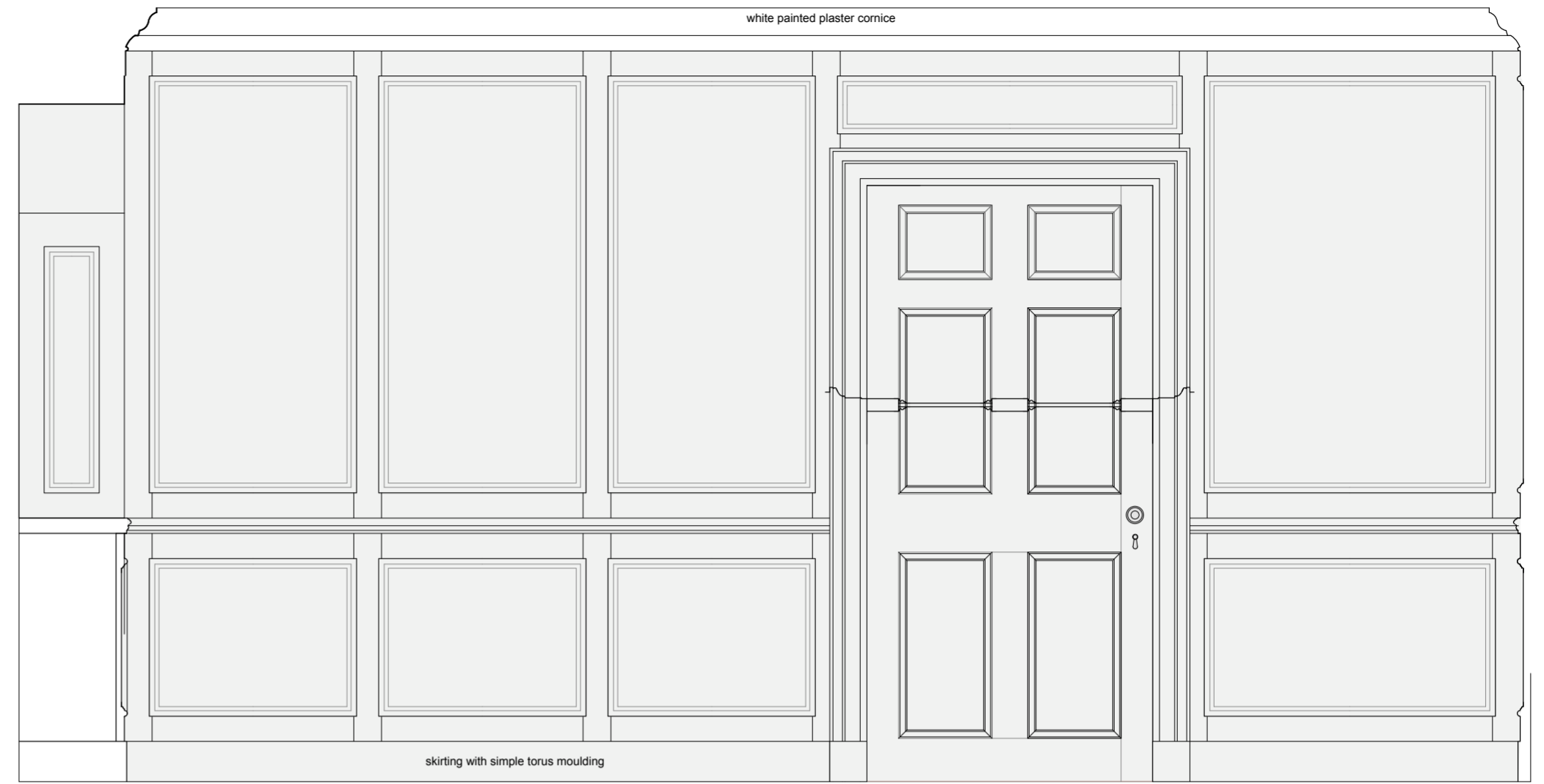
1017/D 05

Proposed new panelled chimney surround and dado rail to Din. Rm

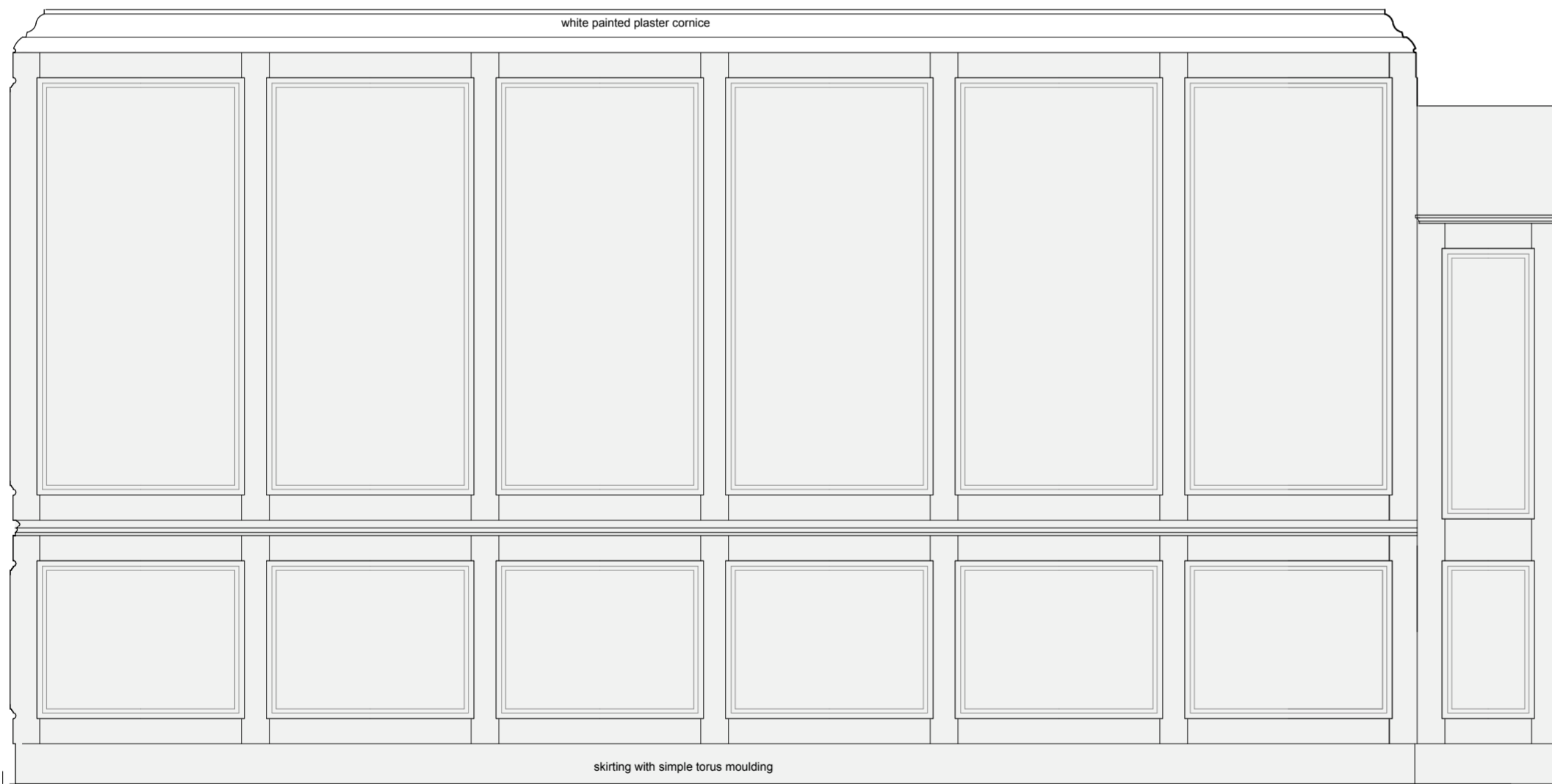
Date 8.1.07 Scale 1:20 This drawing is copyright Revisions



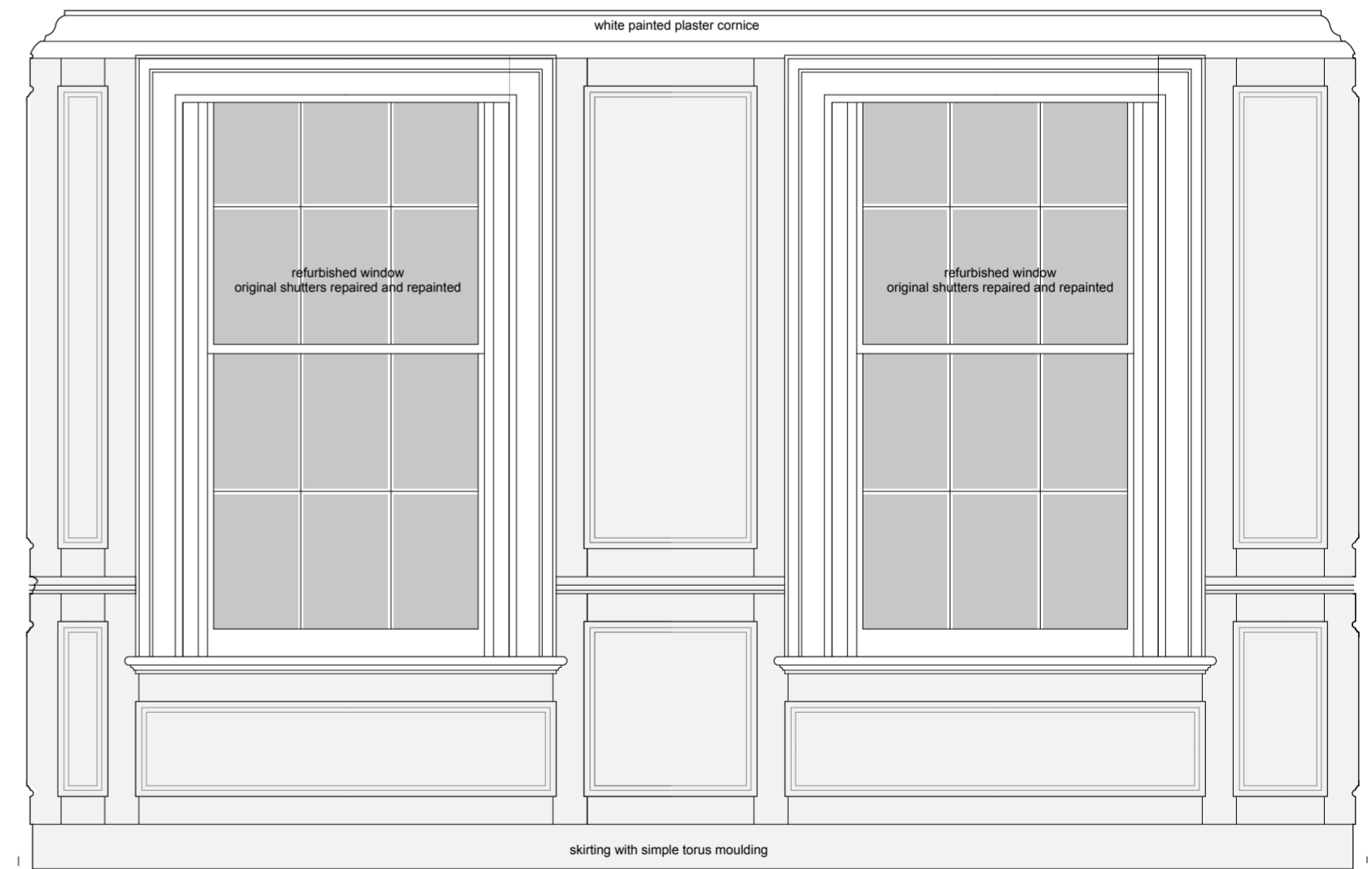
Elevation A -



Elevation B -

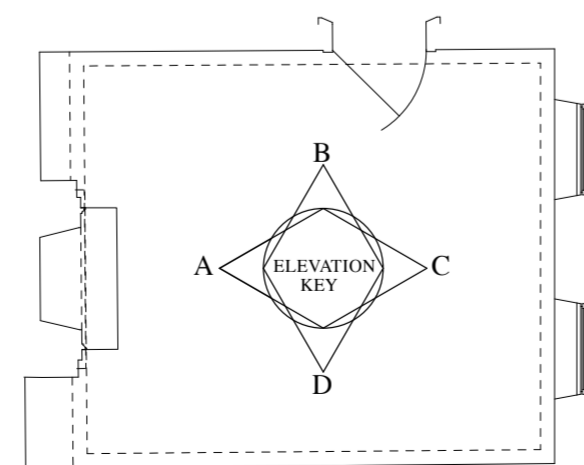


Elevation D -

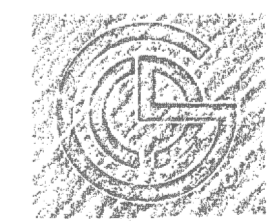


Elevation C -

Detail based on English Heritage record photographs and existing panelling and dado within Entrance Hall. All panelling to be constructed in softwood and painted.



Elevation Key - NTS



THE CHARLTON BROWN PARTNERSHIP  
ARCHITECTS

The Old Chapel Shepherds Walk Hampstead London NW3 5UE T 020 7794 1234 F 020 7435 5085 E office@charltonbrown.com

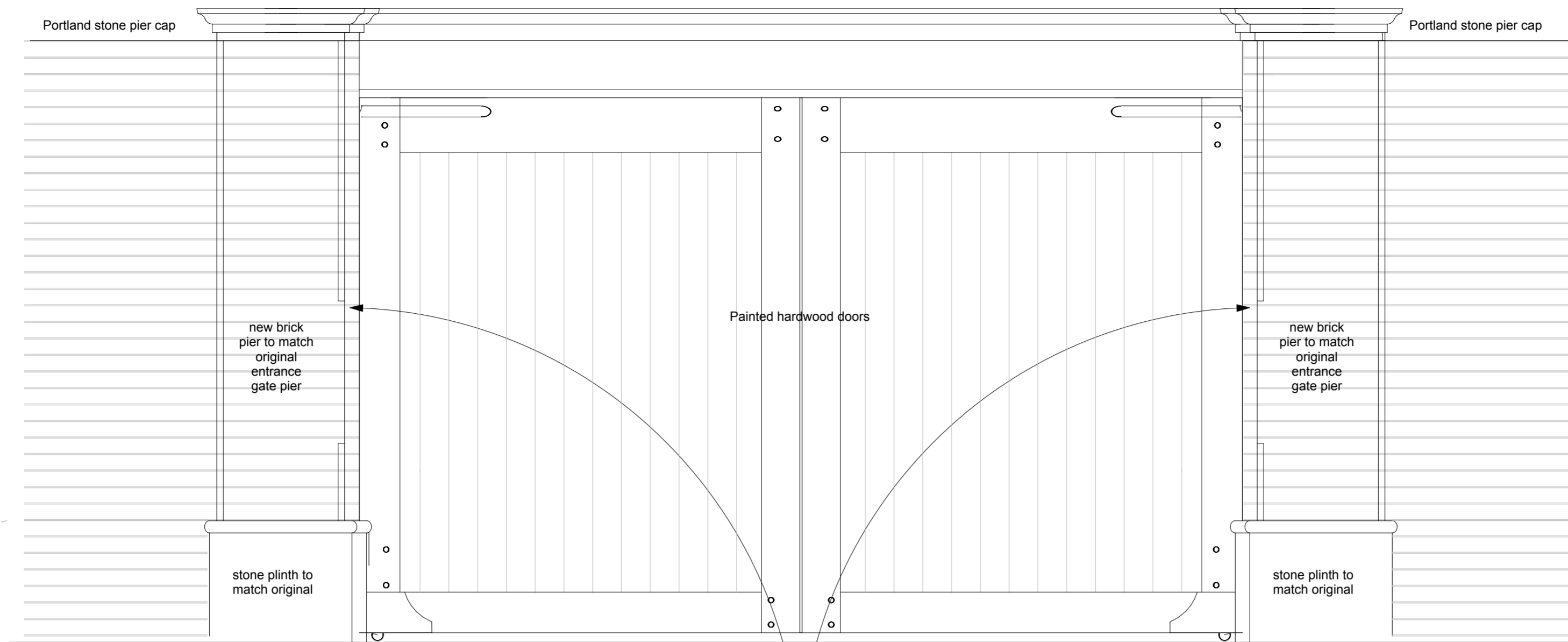
Heath House, NW3

1017/D 06

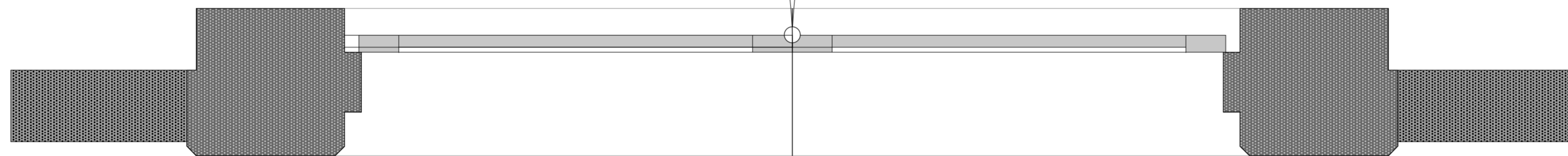
Proposed new panelling to Study

Date 8.1.07 Scale 1:20 This drawing is copyright

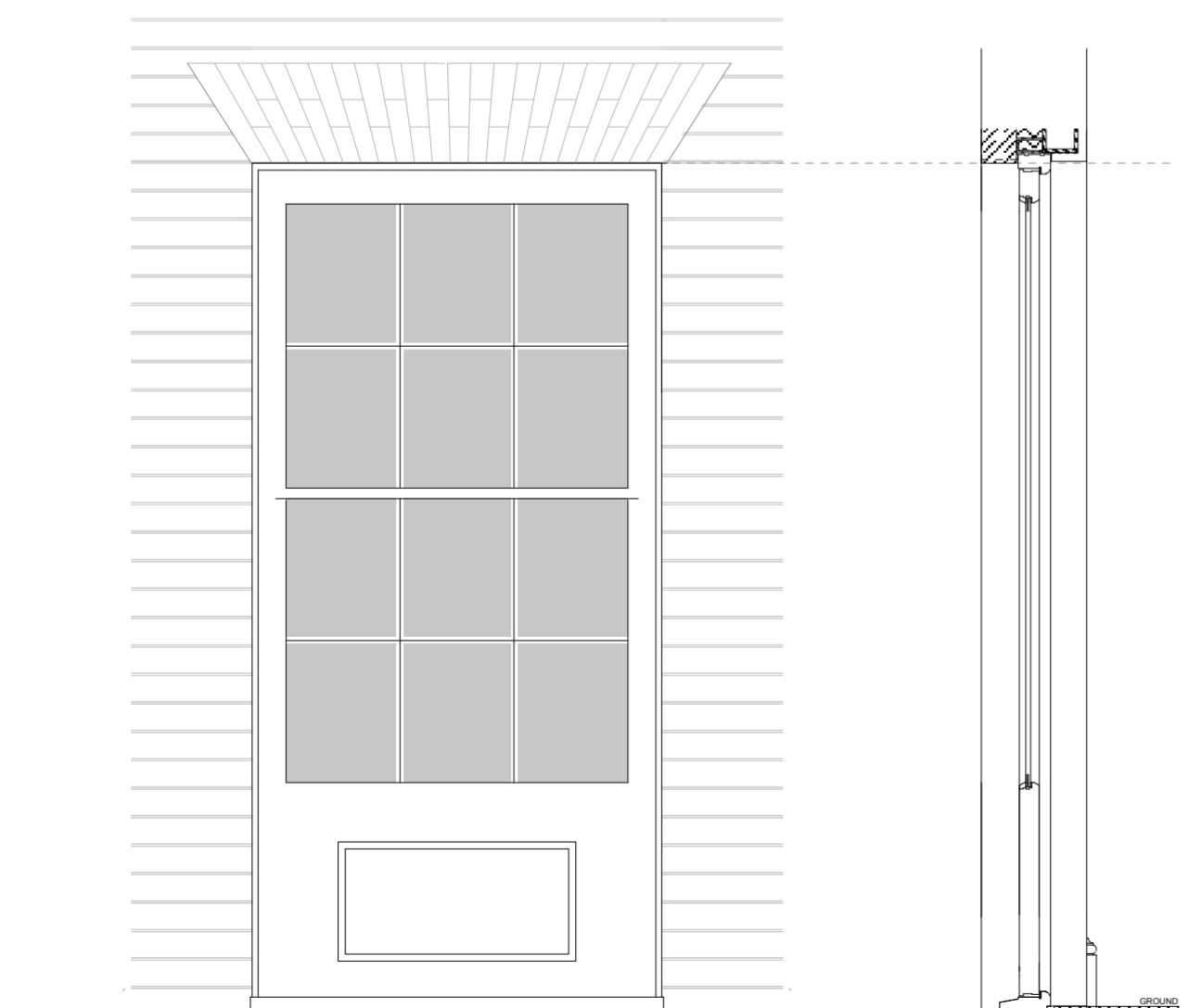
Revisions



Elevation of garage doors

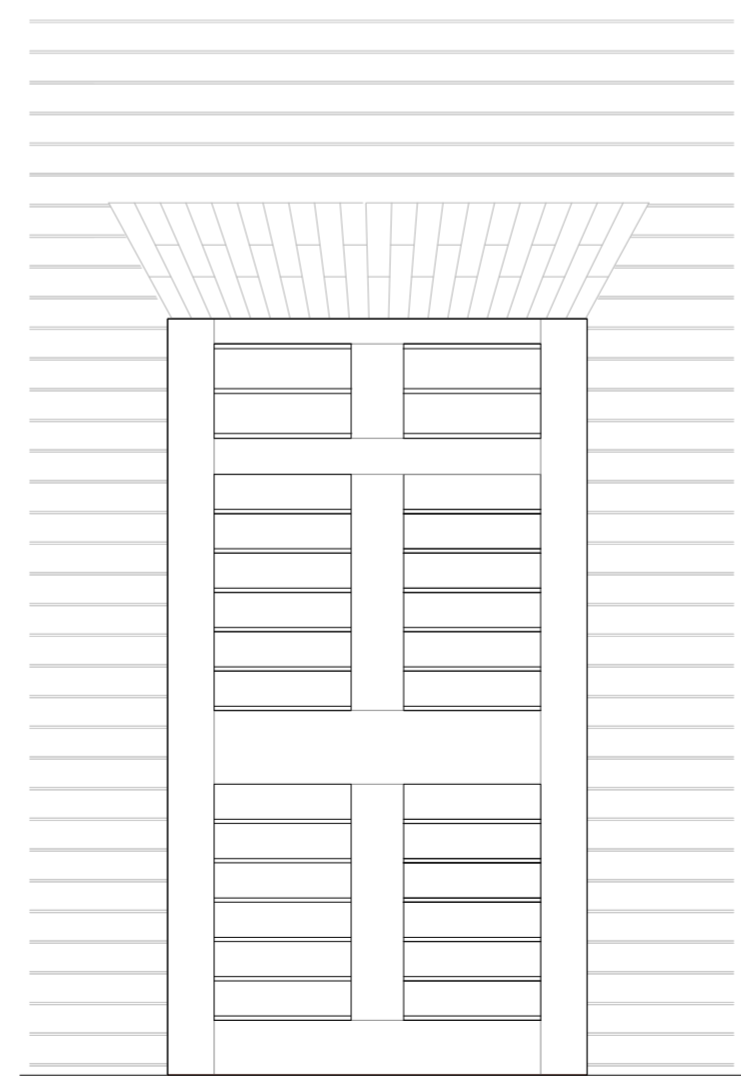


Plan of garage doors



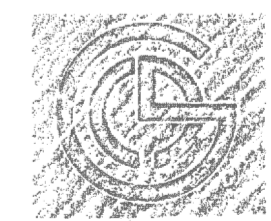
Elevation of kitchen door

Section through kitchen door



solid oak louvered door

Elevation plant access door

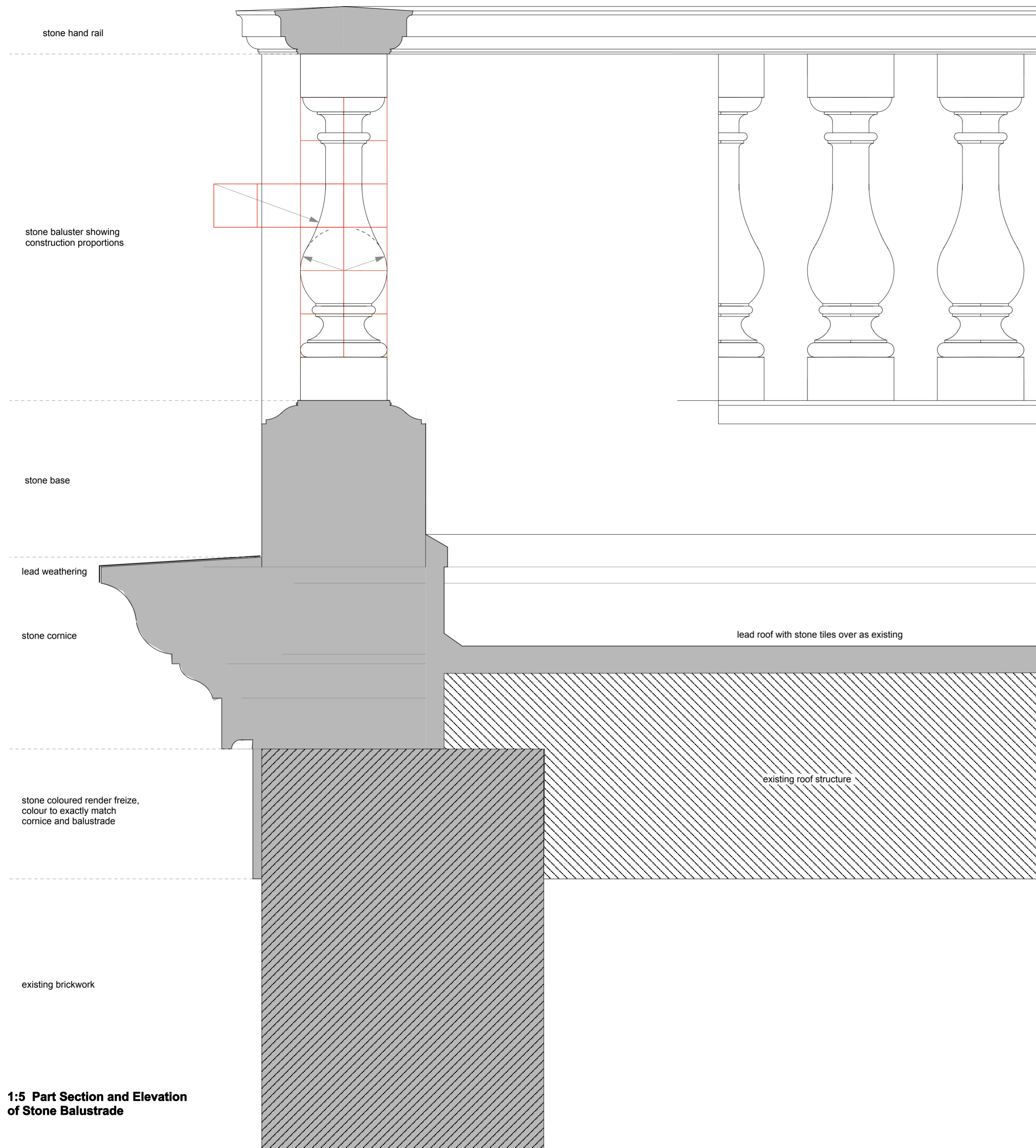


THE CHARLTON BROWN PARTNERSHIP  
ARCHITECTS

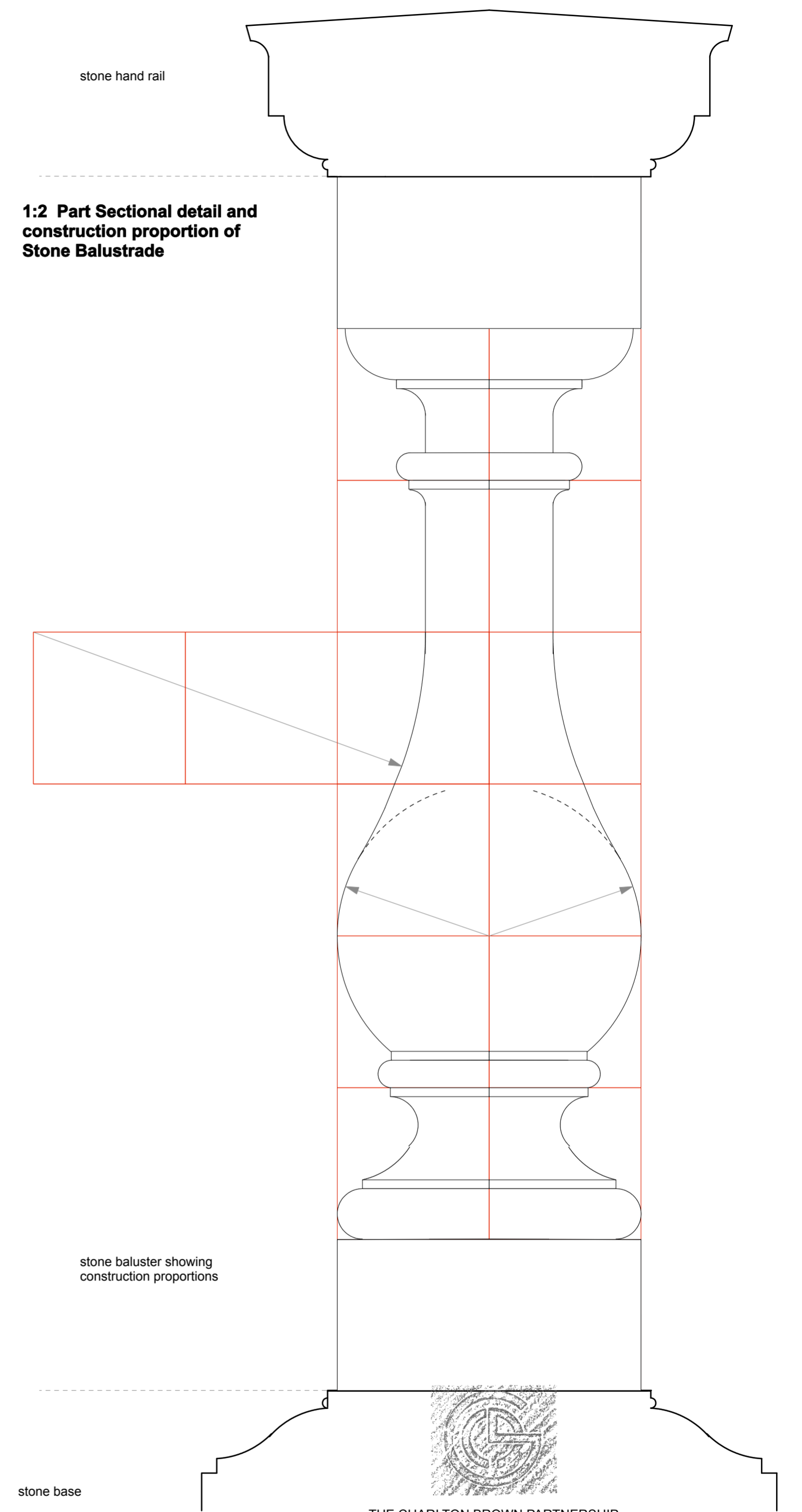
The Old Chapel Shepherds Walk Hampstead London NW3 5UE T 020 7794 1234 F 020 7435 5085 E office@charltonbrown.com  
Heath House, NW3 1017/D 08

Proposed external gates and doors

Date 8.1.07 Scale 1:20 This drawing is copyright Revisions



**1:5 Part Section and Elevation of Stone Balustrade**



THE CHARLTON BROWN PARTNERSHIP  
ARCHITECTS

The Old Chapel Shepherds Walk Hampstead London NW3 5UE T 020 7794 1234 F 020 7435 5085 E office@charltonbrown.com

Heath House, NW3

1017/D 09

Balustrade Details

Date 18.1.07 Scale 1:2 & 1:5 This drawing is copyright

Revisions