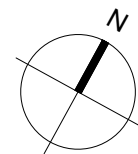
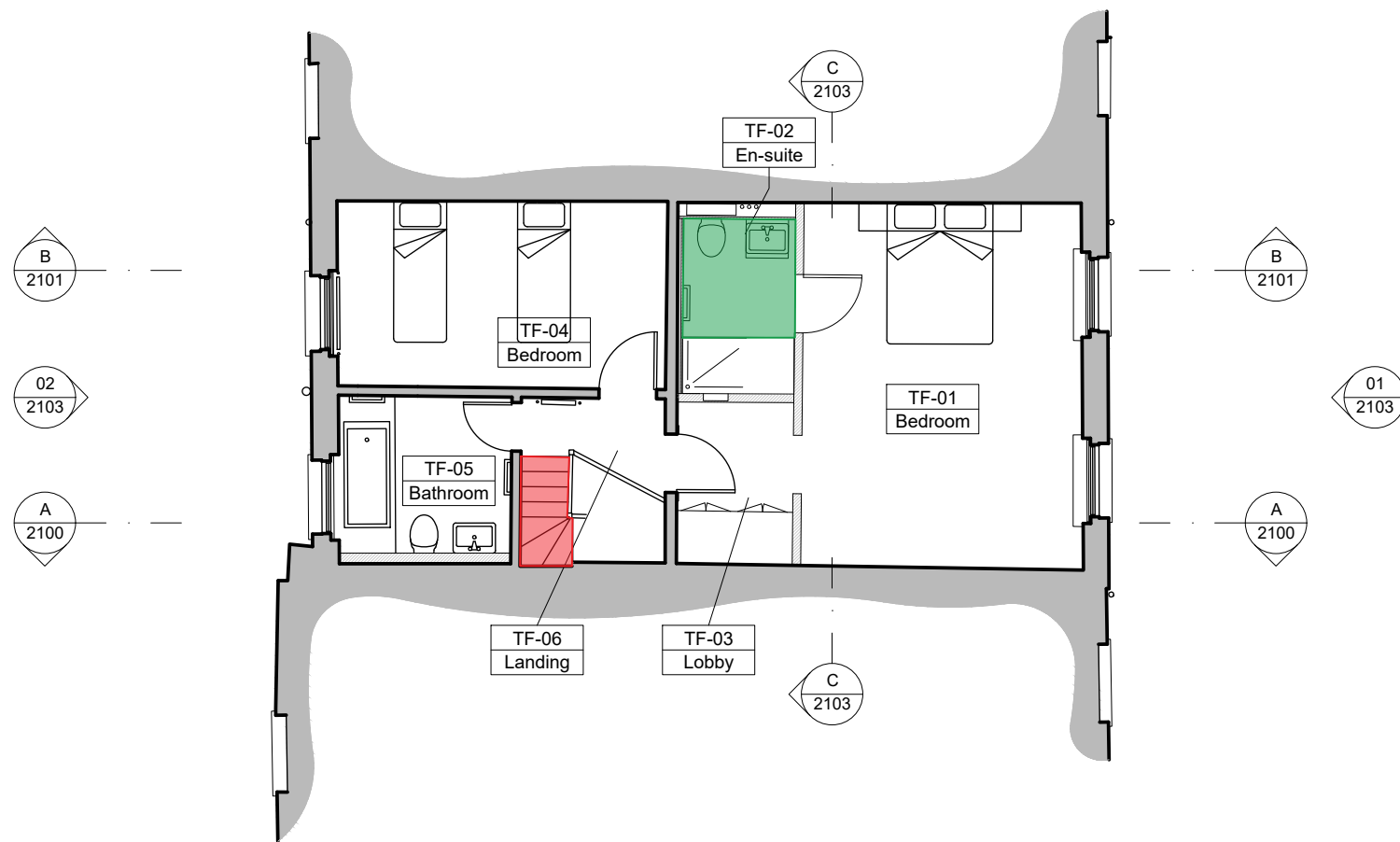


- Read all drawings in conjunction with associated specification, schedules and documents.
- Read all the notes on this drawing.
- Based on survey information by others.
- Drawing's level of detail not suitable for construction.
- Contractor to check and confirm dimensions on site.
- All fire ratings and new works subject to Building Control approval.

En-suite Bathroom: Timber boards washed, cleaned and repaired, with hole infilled with OSMO wood filler. Final finish in OSMO Wax (undercoat) and OSMO Oil (top coat).

Stairs from second floor to third floor: Timber boards washed, cleaned and repaired, with holes infilled with OSMO wood filler. Painted finish in waterbased low-VOC Farrow & Ball paint (colour tbd).

[illegible]