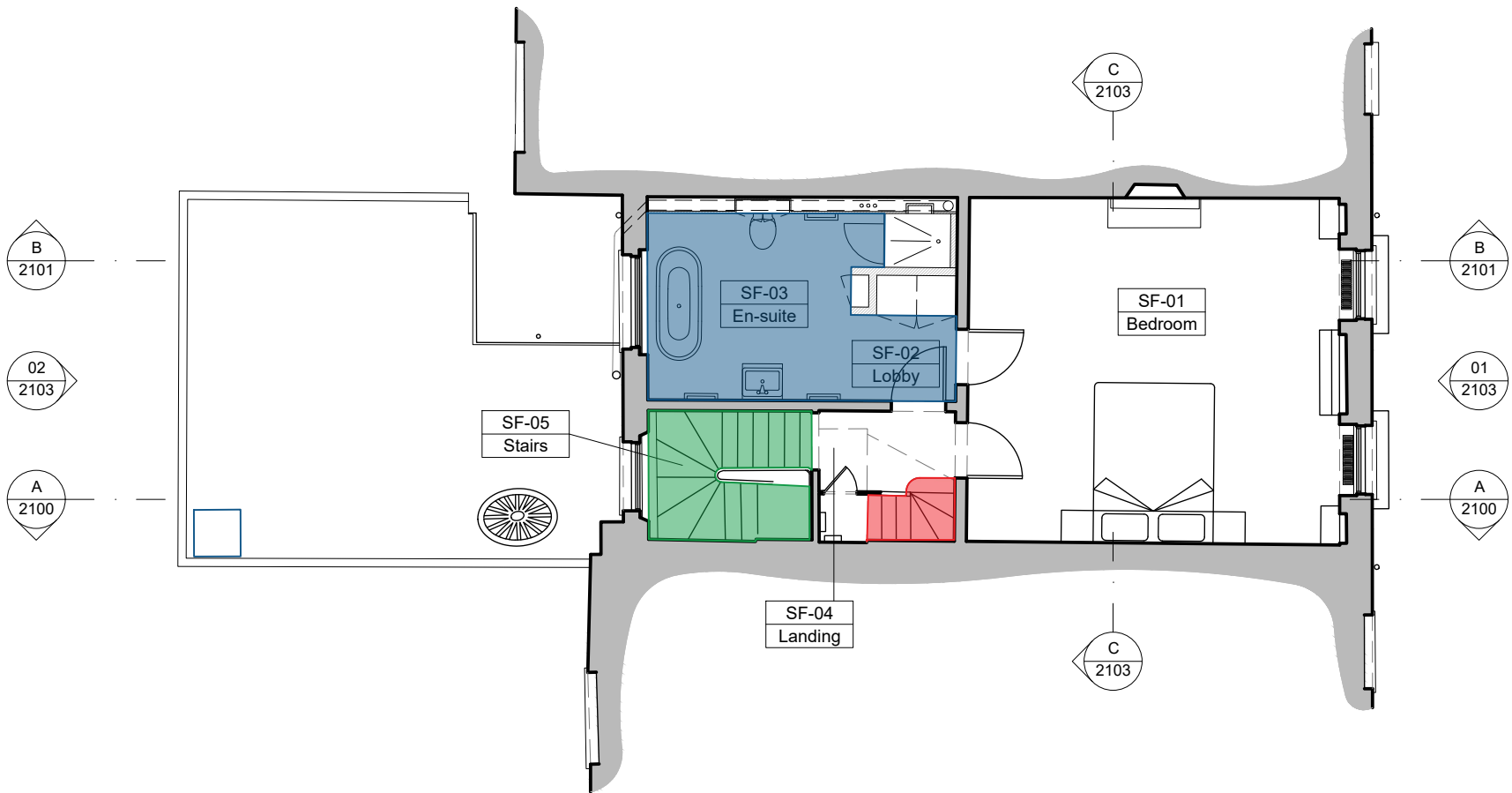


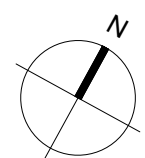
GENERAL NOTES

- Read all drawings in conjunction with associated specification, schedules and documents.
- Read all the notes on this drawing.
- Based on survey information by others.
- Drawing's level of detail not suitable for construction.
- Contractor to check and confirm dimensions on site.
- All fire ratings and new works subject to Building Control approval.

KEY

- Landing and stairs from ground floor to second floor:** Timber boards washed, cleaned and repaired, with hole infilled with OSMO wood filler. Final finish in OSMO Wax (undercoat) and OSMO Oil (top coat). Stair risers to be painted in water-based paint low-VOC Farrow & Ball paint (colour tbd).
- Master Bathroom:** Timber boards washed, cleaned and repaired, with holes infilled with OSMO wood filler. Painted finish in water-based low-VOC Farrow & Ball paint (colour tbd).
- Stairs from second floor to third floor:** Timber boards washed, cleaned and repaired, with holes infilled with OSMO wood filler. Painted finish in waterbased low-VOC Farrow & Ball paint (colour tbd).





Purpose of Issue:
FOR_LBC

0125

Scale 1:100m

<div>Notes</div> <div><div>1. Any dwg format drawing is to be read in conjunction with and at the scale of the accompanying pdf.</div><div>2. Where colours other than black or grey are used, the drawing must be plotted in colour.</div><div>3. For status 'C' (Construction) drawings all dimensions are to be checked on site by the contractor, scaling is for Local Authority purposes only.</div><div>4. Unless otherwise indicated, all dimensions are in millimeters.</div><div>5. All information on this drawing is to be read in conjunction with the relevant Donald Insall Associates specification and trade contractors' drawings and information by specialists.</div><div>6. In the event of any discrepancy, please contact us immediately.</div><div>7. This drawing may contain survey information by others and is to be used solely for the purposes for which it was issued.</div><div>8. These are uncontrolled documents issued for information purposes only. If you have any queries regarding the drawings, please contact DIA immediately.</div><div>9. Please note DIA cannot be held responsible for any errors arising from changes made to an uncontrolled dwg file.</div></div> <div>© 2019 DONALD INSALL ASSOCIATES LTD</div>	<div>Drawing Status</div> <div><div>F</div> Feasibility</div> <div><div>S</div> Sketch Design</div> <div><div>P</div> Planning</div> <div><div>B</div> Building Control</div> <div><div>D</div> Design Development</div> <div><div>M</div> Measurement</div> <div><div>T</div> Tender</div> <div><div>C</div> Construction</div> <div><div>R</div> Record</div>
--	---