

GENERAL NOTES:
 This drawing is © 2019 Pollard Thomas Edwards LLP (PTE).
 Use figured dimensions only. **DO NOT SCALE.**
 All dimensions are in millimetres unless noted otherwise.
 This drawing must be read in conjunction with all other relevant drawings and specifications from the Architect and other consultants.
 If in doubt, ask.

SETTING OUT NOTES:
 All setting out to be confirmed on site prior to construction - any discrepancy must be immediately reported to the Architect.
 All partitions set out to studwork or structure.
 For setting out and specification of M&E services refer to M&E Consultants documents.
 For setting out and specification of structure refer to Structural Engineer's documents.



NAMING CONVENTION KEY

Project Code	Consultant	Volume	Level	Doc Type	Role	Drawing Number
XXXX	PTE	ZZ	ZZ	XX	A	00001

Package /Series

Drawing Notes

- Structural setting-out based on information received from Stantec on 11.01.23
- Civil setting-out based on information received from Stantec on 23.12.22
- M&E setting-out based on information received from TUD on 10.02.23
- Landscape information based on information received from Fabrik on 22.12.22
- All information to be read in conjunction with latest Fire Report, produced by OFR
- All information to be read in conjunction with Acoustic Report, produced by RSA
- All architectural drawings to be read in conjunction with Architectural Specification, produced by PTE
- All details subject to Building Warnings and Building Control, produced by RSA
- Contractor to verify all conditions, levels and dimensions on site and notify of any variations
- All items to comply with relevant planning approvals and conditions to be discharged
- Window and door openings to be confirmed on site by specialists
- RIBA to confirm acoustic requirements for all walls
- Loose and arbrick sizes and specifications to be agreed
- Roof anchor points shown inductively - subject to specialist design and specification

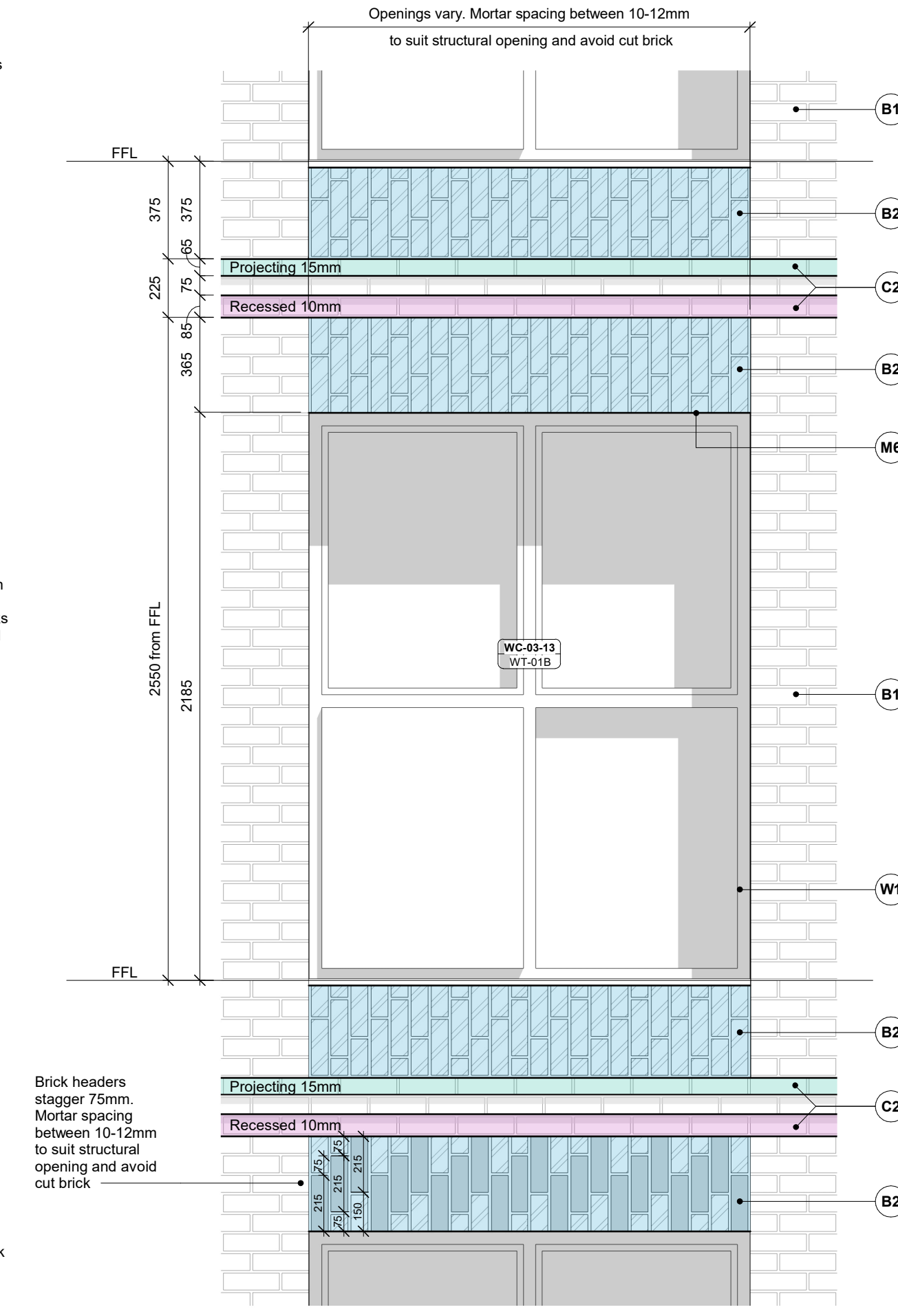
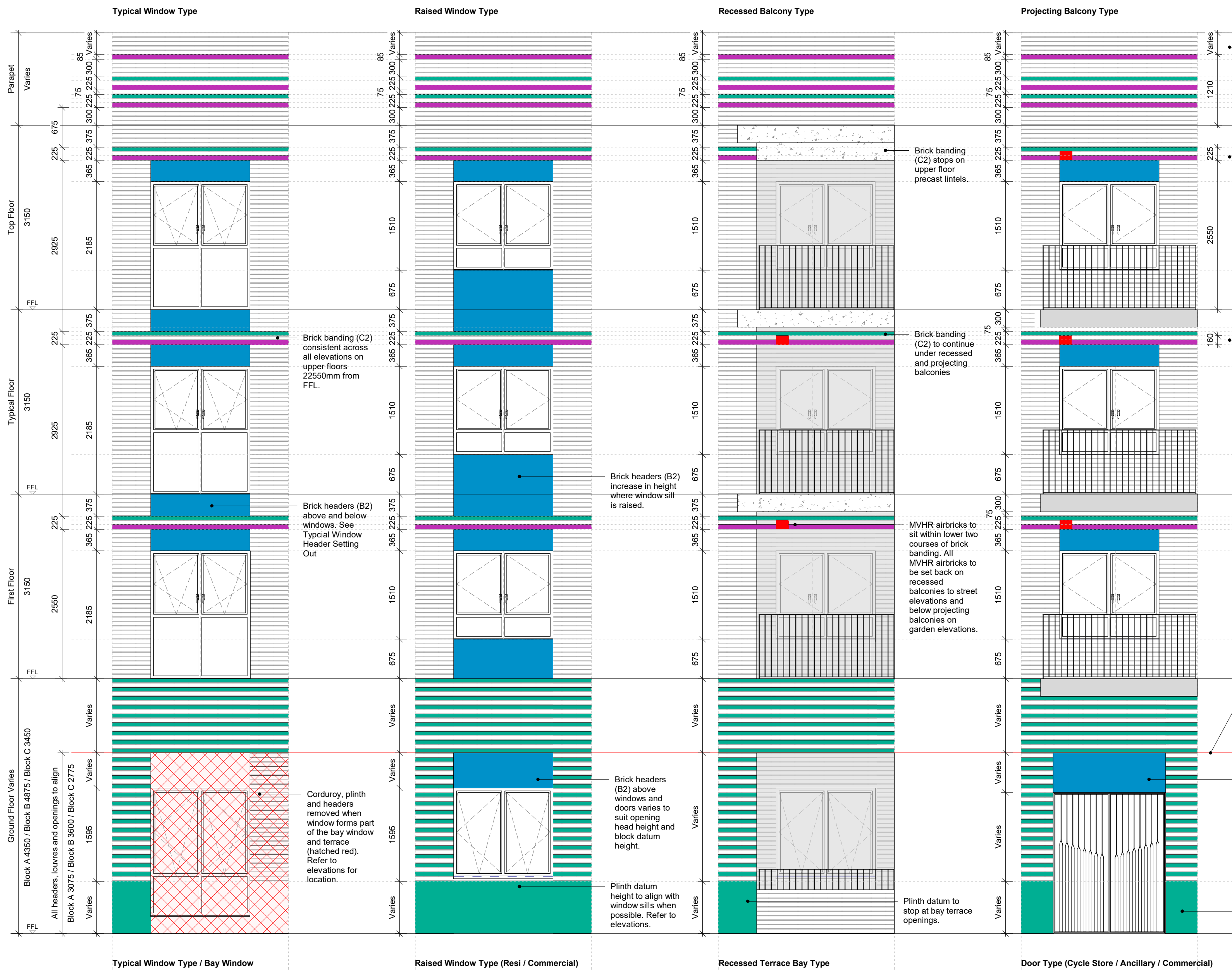
To be read in conjunction with 05 Elevation GAs and 34 Bay Studies

KEY

- Projecting brick course**
15mm projecting stretcher course
- Recessed brick course**
10mm recessed stretcher course
- Brick headers**
Vertical stretcher course staggered 75mm. Mortar spacing adjusted to suit structural openings and avoid cut bricks above/below windows.
- MVHR locations**
MVHR airbricks to sit within lower two courses of brick banding. All MVHR airbricks to be set back on recessed balconies on garden elevations.
- Brick header datum to ground floor**

MATERIALS KEY

- B1 **Brick - Rosado by Nelissen Bricks:**
Stretcher bond, colour matched light mortar with flush joints
- B2 **Brick - Rosado by Nelissen Bricks:**
Vertical stretcher bond, colour matched light mortar with flush joints
- B3 **Brick - Rosado by Nelissen Bricks:**
Corduroy (every other brick course), colour matched light mortar with flush joints
- Z1 **Main entrance facade:**
Glazed brick, EH Smith Eden Green (or similar)
- Z2 **Bolt-on balconies:**
Sapphire or similar, PPC in RAL 3012 Beige Red
- Z3 **Pink pigmented concrete balcony deck:**
Specification tbc, pinky colour tbc, 50mm projection and ca. 327.5mm horizontal extension
- Z4 **Pink pigmented precast banding:**
Specification tbc, pinky colour tbc, 327.5 mm horizontal extension
- Z5 **MVHR Air bricks:**
Titan FireSafe or equivalent equal approved, RAL 3012 Beige Red
- M1 **Balustrades to inset / projecting balconies:**
PPC vertical metal flats, RAL 3012 Beige Red
- M2 **Balustrades to inset balconies at ground floor level:**
300mm high PPC vertical metal flats, RAL 3012 Beige Red on recessed 800mm brick plinth
- M3 **Substation, Plant and Refuse Store louvres:**
PPC aluminium, RAL 3012 Beige Red, external sealant to match metalwork colour
- M4 **Imperforate acoustic screen enclosure:**
Single skin brick wall, 3m high with steel cantilever columns to engineer's specification, stretcher bond brickwork, colour matched light mortar with flush joints.
- M5 **Rainwater pipes and hopperheads:**
Marley Alutec or similar, PPC circular aluminium RWP's, RAL 3012 Beige Red
- M6 **Soffits to projecting balconies, ground and top floor inset balconies, commercial entrances and window heads:**
PPC aluminium, RAL 3012 Beige Red
- M7 **Cycle Store doors and openings:**
PPC 15x100mm frame to door leaf and opening, RAL 3012 Beige Red, 12x35mm full height vertical metal flats, twisted at staggering heights. Solid backing panel to be included on openings facing the street, RAL 3012 Beige Red
- M8 **Main Entrance doors:**
Schuco or similar, RAL tbc to match main entrance facade material
- M9 **Ancillary Space doors:**
PPC metal louvred door system, Sunray Doors or equivalent equal approved, RAL 3012 Beige Red, external sealant to match metalwork colour
- M10 **Refuse Store doors to Blocks B & C:**
PPC metal louvred door system, Sunray Doors or equivalent equal approved, green RAL tbc to match main entrance facade material, external sealant to match metalwork colour
- M11 **Commercial Cycle Store doors to Block C:**
PPC metal louvred door system, Sunray Doors or equivalent equal approved, RAL tbc to match main entrance facade material, external sealant to match metalwork colour
- W1 **Timber composite / aluminium window:**
Idealcorn or similar, RAL 7047 Telegrey 4 with 190mm reveal PPC sill in RAL 3012 Beige Red
- W2 **Commercial curtain walling with sliding door:**
Specification tbc, with 190mm reveal, frame to curtain walling RAL 7047 Telegrey
- C1 **Parapet coping:**
PPC aluminium coping, RAL 3012 Beige Red
- C2 **Rosado Brick by Nelissen Bricks:**
15mm projecting / 10mm recessed brick detail



2 Typical Window Header Setting Out
 Scale: 1:20

External Walls - Vertical Brick Setting Out
 Scale: 1:50

rev	date	description	drawn	audited
P1	06.03.23	Issued for stage authorisation	DC	DC

S4 - FOR STAGE AUTHORISATION

Dispeker Wharf
 38 Graham Street
 London N1 8JX
 020 7336 7777
 forename.surname@ptea.co.uk
 @ptearchitects
 www.pollardthomasedwards.co.uk



project	job number	drawn	scale	date created
Abbey Area Phase 3 - PI	19-049-PI	DC	As indicated@A1	Mar'23

Vertical Brick Setting Out
 ARP3-PTE-ZZ-ZZ-DR-A-05301 P1 S4