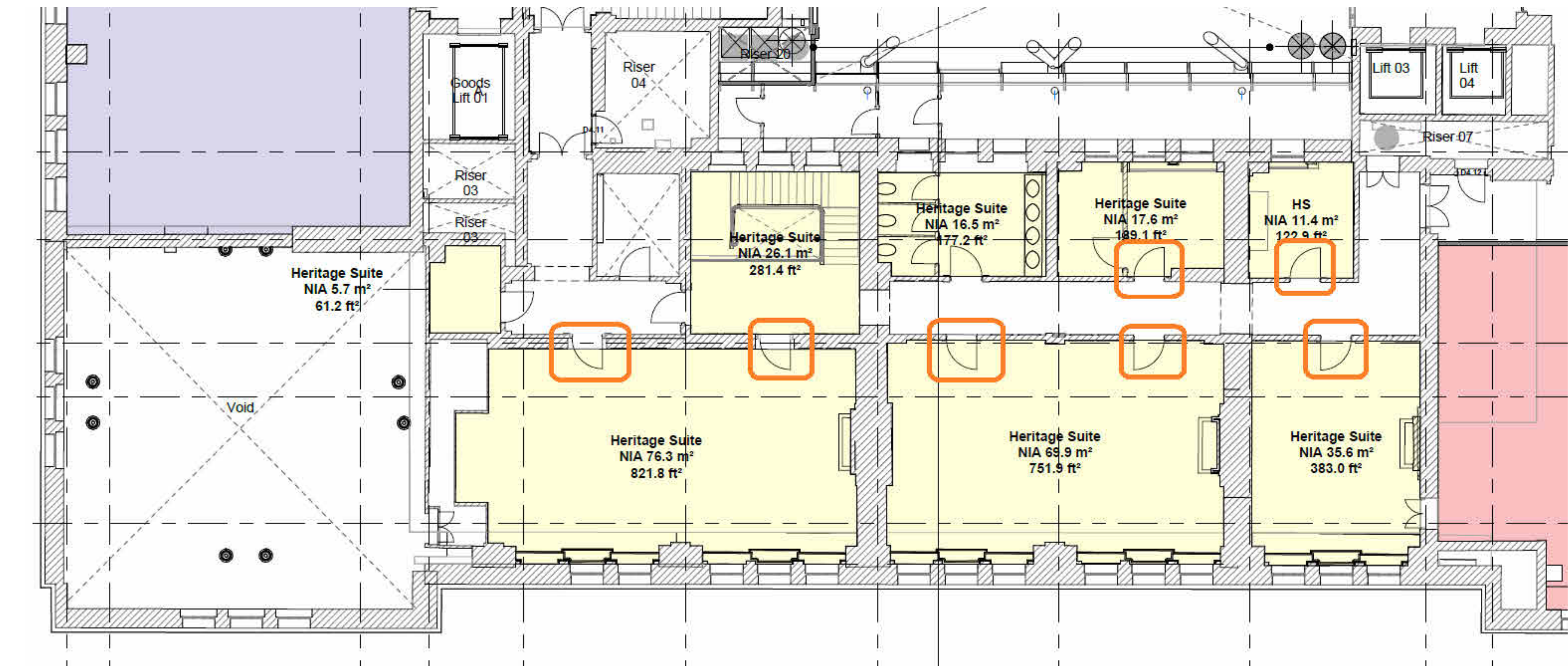


LEVEL 03 - HERITAGE DOORS



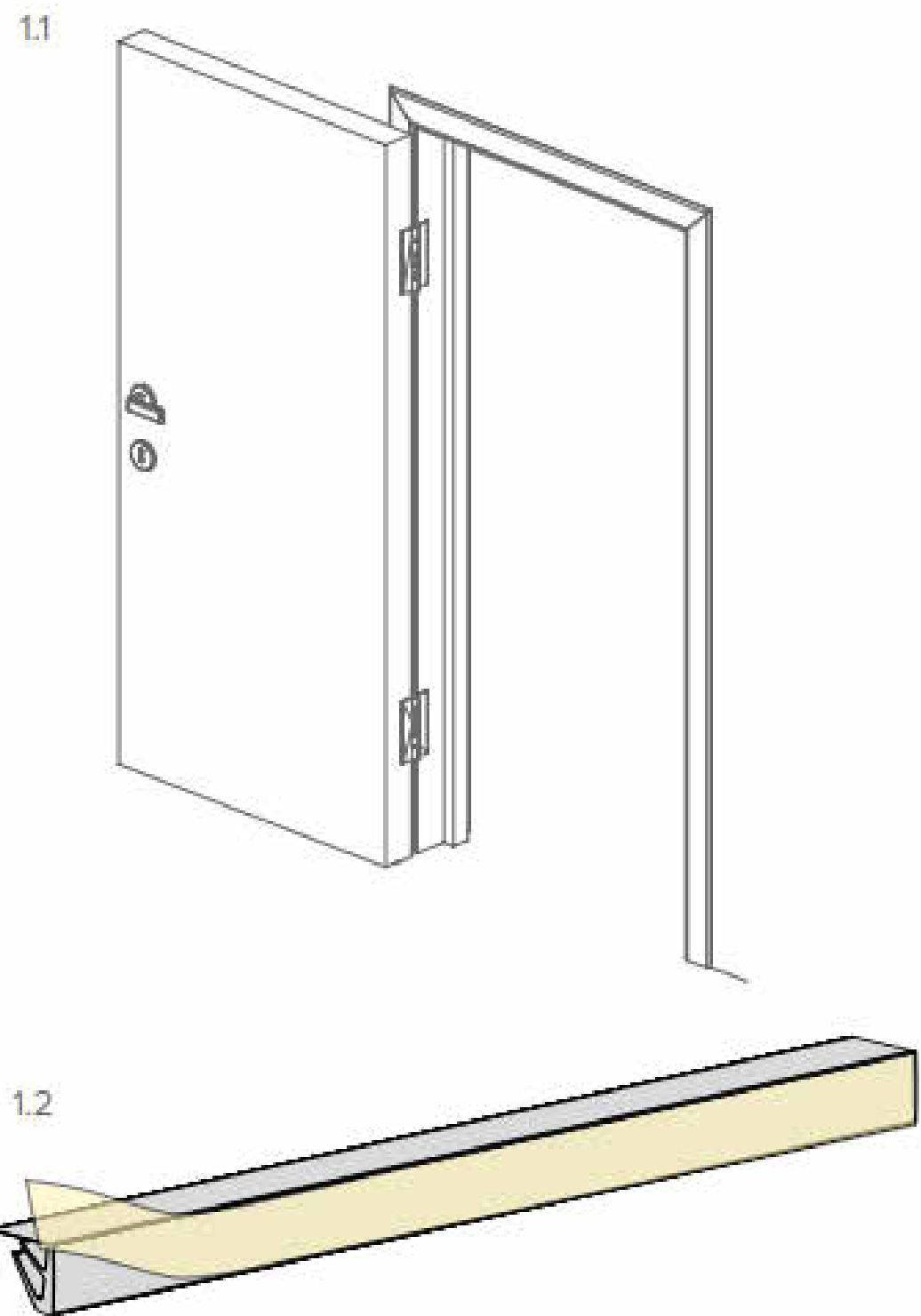
LEVEL 04 - HERITAGE DOORS

NOR710

NORSOUND BY NORSEAL

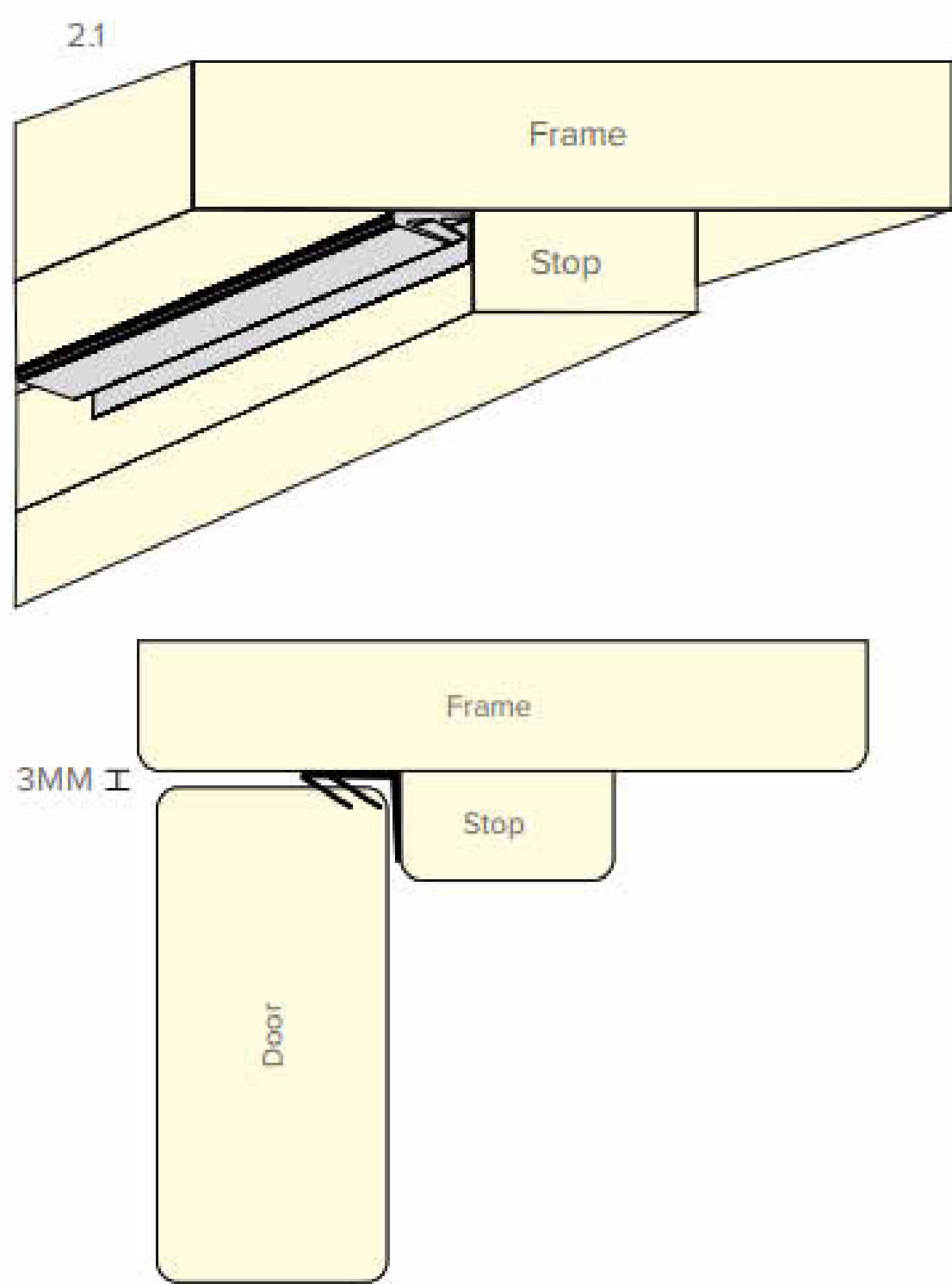


1



- 1.1** The NOR710 must be fitted with the door fully opened with the frame completely free from dirt and dust.
- 1.2** Peel off the backing to reveal adhesive edge.

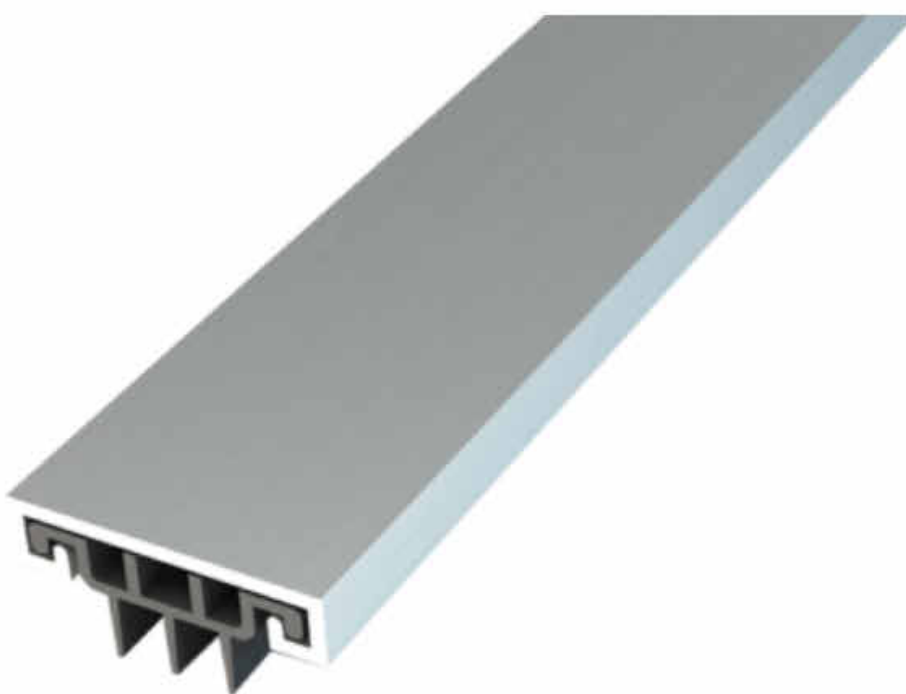
2



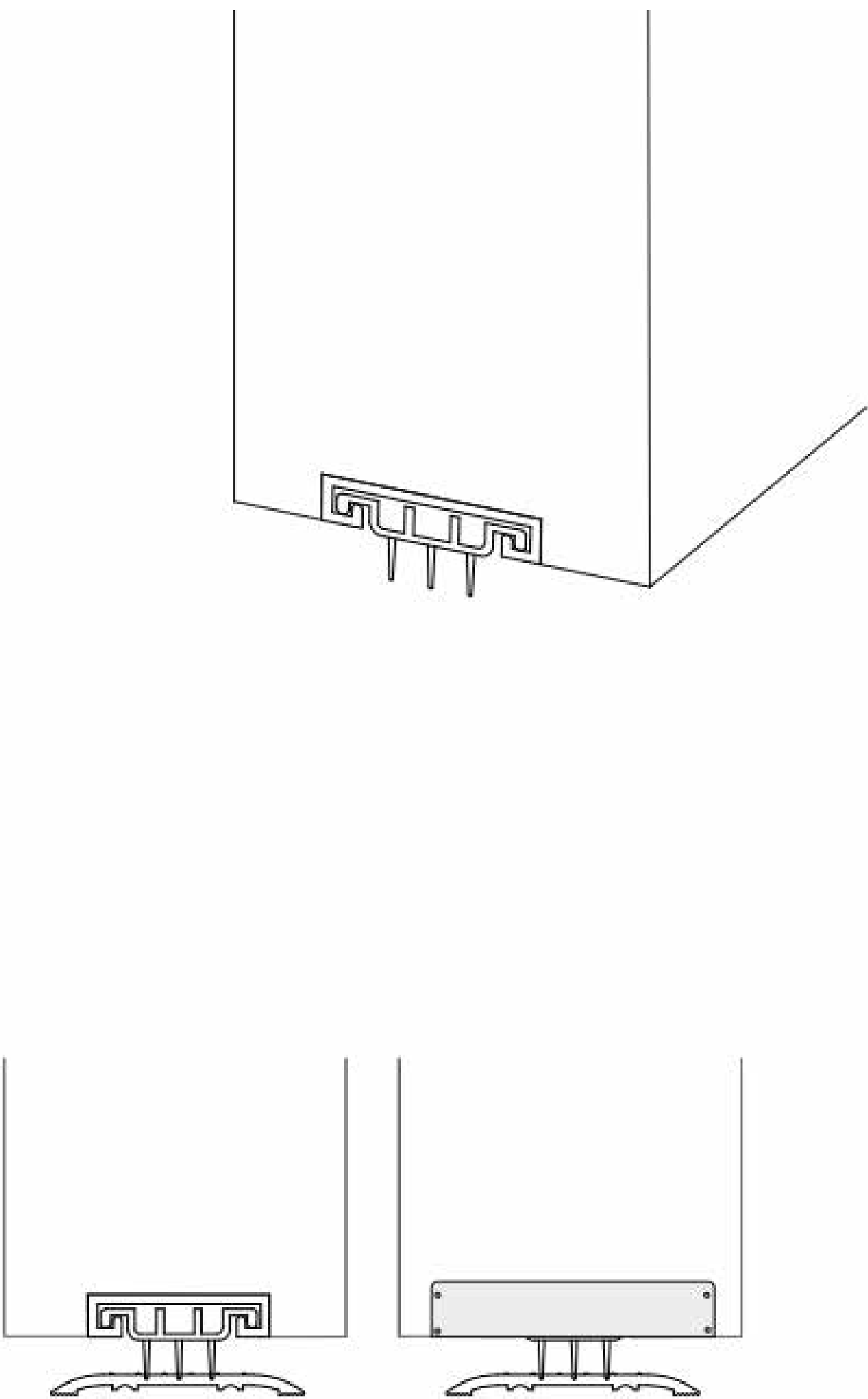
- 2.1** Place adhesive edge on the frame with the rear blade against the door stop. Fit the NOR710 from the top to the bottom of both sides then fit to the top ensuring the rear blade is against the door stop. Trim to size with a sharp knife. Ensure the gap between the door and frame is 3mm
- NOTE: The NOR710 may also be fitted with the adhesive edge on the door stop.

NOR850

NORSOUND BY NORSEAL



4.1



- 4.1** Fix the end plates using the pins provided.