



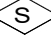





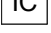
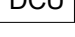






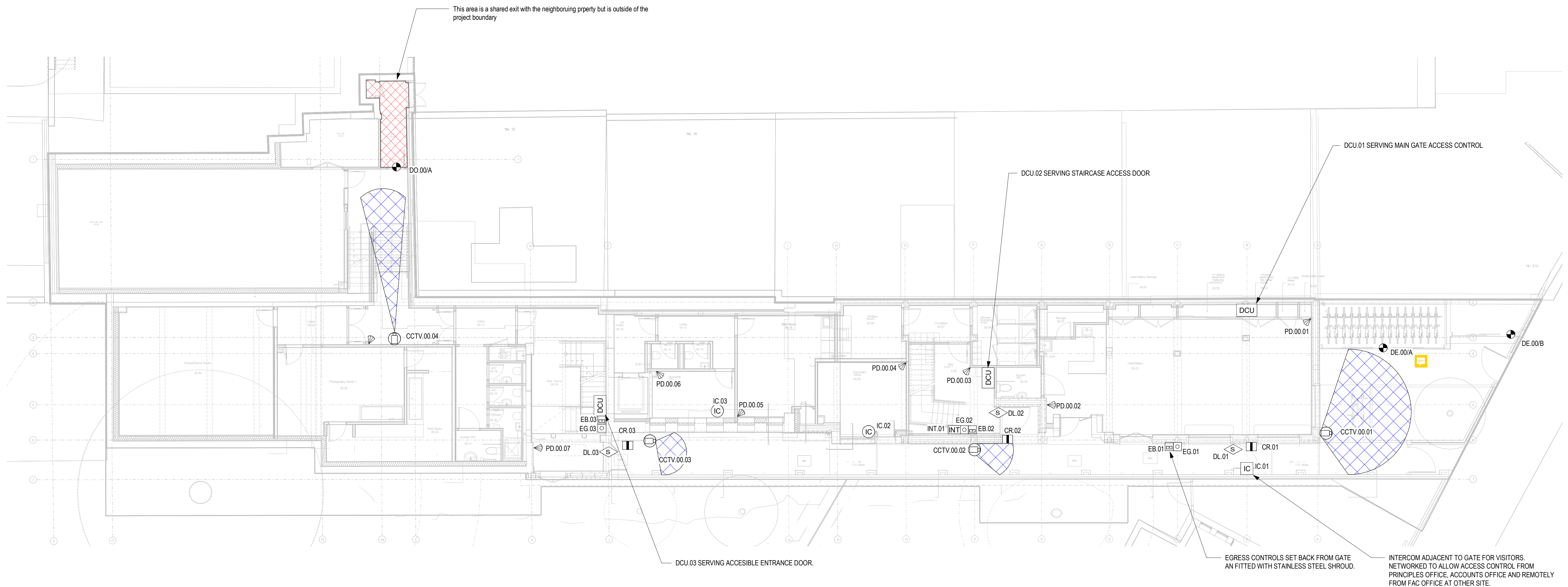


GENERAL NOTES		KEY	
1.	Do not scale from this drawing.		Access Control Point
2.	Print this drawing in colour.		Card Reader
3.	This drawing is to be read in conjunction with all other MFX documents (drawings, schedules and specification) along with other design team documentation.		Intercom Remote Handset
4.	This is a performance specified system as set out in Spec 200 section 4.2. The contractor undertakes the design. This drawing is indicative of the system intent and is to be completed by NSI Approved Specialist Designer.		CCTV PTZ Camera
5.	All electrical works are to be designed installed and tested to BS 7671 : 2018 (18th Edition of the Wiring Regulations). Refer to the Architects & Fire consultants information for Emergency Door requirements and general information.		Door Strike Lock
6.			Egress Button
7.	Setting out of all equipment in public spaces is to be confirmed with the Architect.		Emergency Break Glass
8.	All power and security cabling to be as per Cable Type Schedule.		Handle Lock with Proximity Reader
9.	All security cabling to have a minimum Construction Products Regulation Euroclass of Cca-s1b-d2-a2.		Handle Lock with Proximity Reader and Keypad
			Help Point
			Intercom Entrance Panel
			Door Control Unit
			Intruder Alarm Panel
			Panic Alarm
			PIR Presence Detector
			Door Contact Sensor
			Security Keypad
			Vibration Sensor

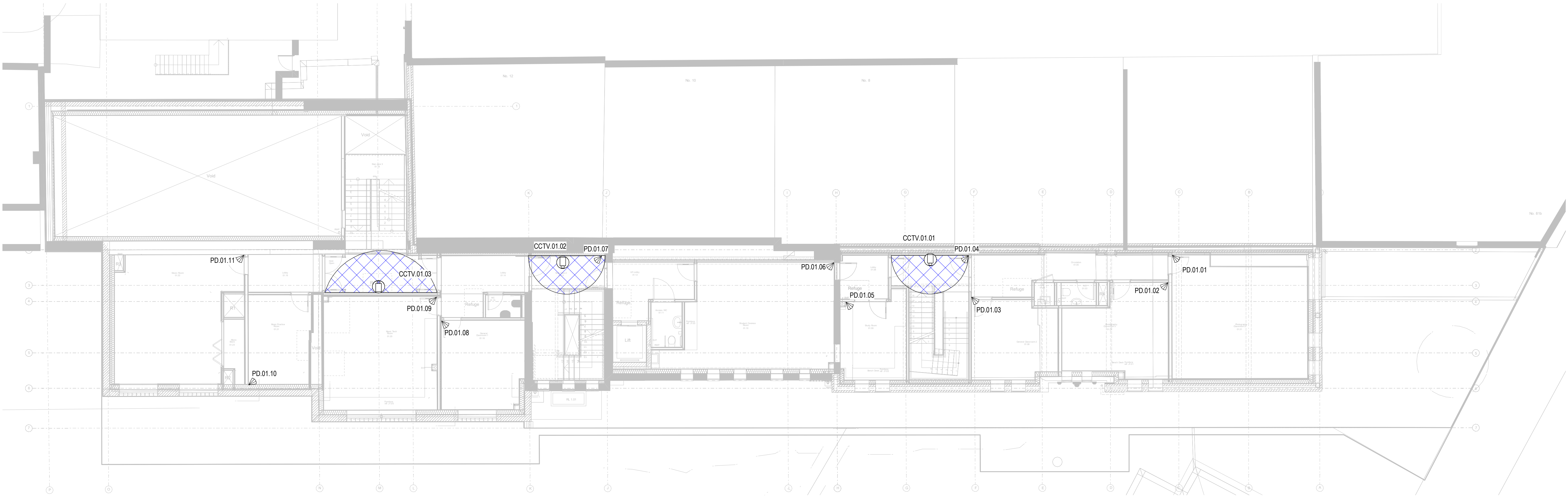


GENERAL NOTES

- Do not scale from this drawing.
- Print this drawing in colour.
- This drawing is to be read in conjunction with all other MXF documents (drawings, schedules and specification) along with other design team documentation.
- This is a performance specified system as set out in Spec 200 section 4.2. The contractor undertakes the design. This drawing is indicative of the design intent and is to be completed by NSI Approved Specialist Designer.
- All electrical works are to be designed installed and tested to BS 7671 : 2018 (18th Edition of the Wiring Regulations).
- Refer to the Architects & Fire consultants information for Emergency Door requirements and general information.
- Setting out of all equipment in public spaces is to be confirmed with the Architect.
- All power and security cabling to be as per Cable Type Schedule.
- All security cabling to have a minimum Construction Products Regulation Euroclass of Cca-s1b-d2-a2.

KEY

- | | |
|--|--|
| | Access Control Point |
| | Card Reader |
| | Intercom Remote Handset |
| | CCTV PTZ Camera |
| | Door Strike Lock |
| | Egress Button |
| | Emergency Break Glass |
| | Handle Lock with Proximity Reader |
| | Handle Lock with Proximity Reader and Keypad |
| | Help Point |
| | Intercom Entrance Panel |
| | Door Cotrol Unit |
| | Intruder Alarm Panel |
| | Panic Alarm |
| | PIR Presence Detector |
| | Door Contact Sensor |
| | Security Keypad |
| | Vibration Sensor |



MAX FORDHAM

www.maxfordham.com

client
Little Dukes Education
job no.
J7268
status code and description
S4 - Preliminary

project leader
AJS

scale at A1
1 : 100

project name
Belsize Park Gym

issue date
03/11/23

revision
P03

classification
Ss_75_40_00_00

drawing title
**Security, Access Control & CCTV
Level 01**

project code
J7268

orig.
- MXF

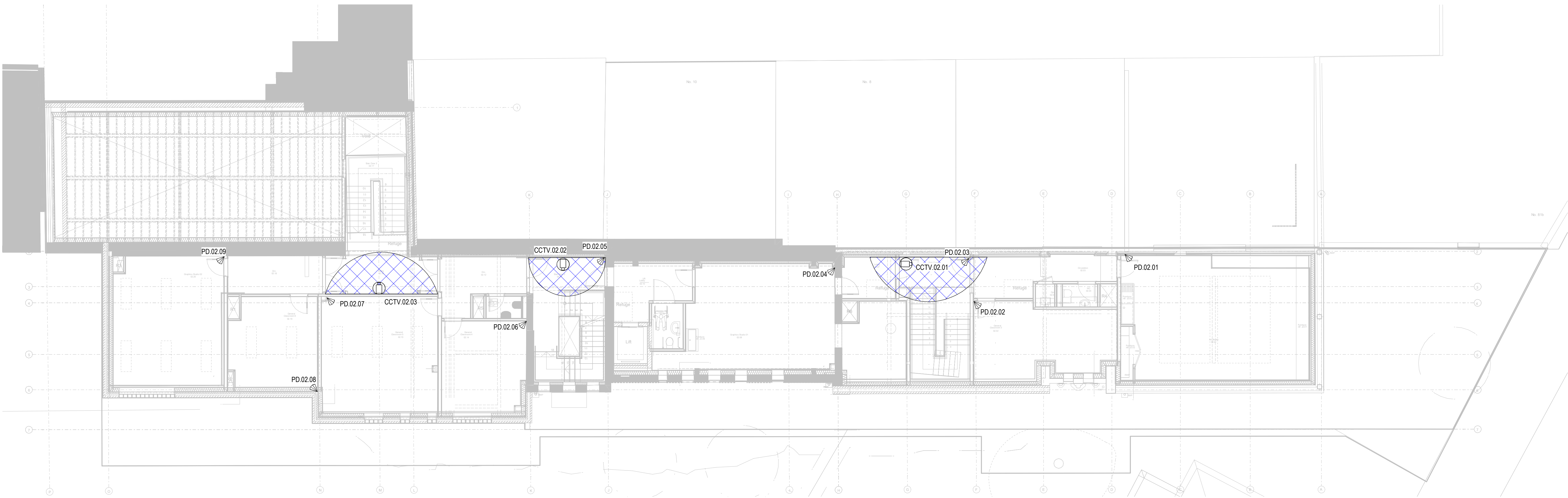
volume
- ZZ

level
- 01

type
- DR

role
- E

number
- 60100



GENERAL NOTES

1. Do not scale from this drawing.
2. Print this drawing in colour.
3. This drawing is to be read in conjunction with all other MXF documents (drawings, schedules and specification) along with other design team documentation.
4. This is a performance specified system as set out in Spec 200 section 4.2. The contractor undertakes the design. This drawing is indicative of the design intent and is to be completed by NSI Approved Specialist Designer.
5. All electrical works are to be designed installed and tested to BS 7671 : 2018 (18th Edition of the Wiring Regulations).
6. Refer to the Architects & Fire consultants information for Emergency Door requirements and general information.
7. Setting out of all equipment in public spaces is to be confirmed with the Architect.
8. All power and security cabling to be as per Cable Type Schedule.
9. All security cabling to have a minimum Construction Products Regulation Euroclass of Cca-s1b-d2-a2.

KEY

- | | |
|--|--|
| | Access Control Point |
| | Card Reader |
| | Intercom Remote Handset |
| | CCTV PTZ Camera |
| | Door Strike Lock |
| | Egress Button |
| | Emergency Break Glass |
| | Handle Lock with Proximity Reader |
| | Handle Lock with Proximity Reader and Keypad |
| | Help Point |
| | Intercom Entrance Panel |
| | Door Cotrol Unit |
| | Intruder Alarm Panel |
| | Panic Alarm |
| | PIR Presence Detector |
| | Door Contact Sensor |
| | Security Keypad |
| | Vibration Sensor |

MAX FORDHAM

www.maxfordham.com

client
Little Dukes Education
job no.
J7268
project leader
AJS
scale at A1
1 : 100
status code and description
S4 - Preliminary

project name
Belsize Park Gym

issue date
03/11/23
revision
P03
classification
Ss_75_40_00_00

drawing title
**Security, Access Control & CCTV
Level 02**

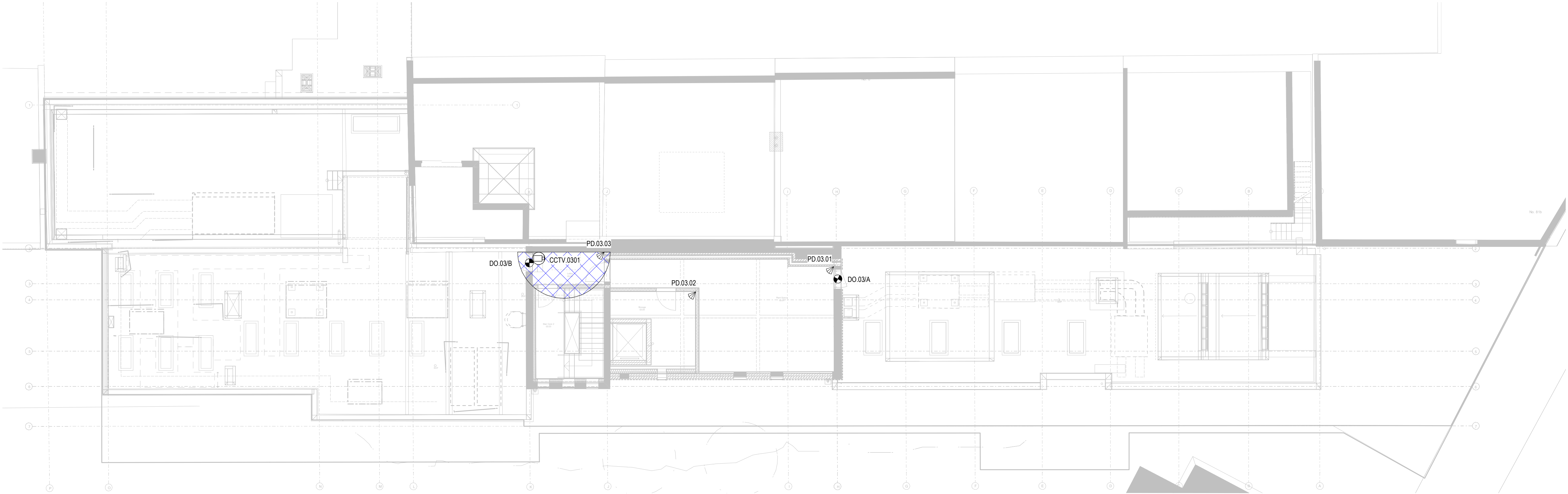
project code
J7268
orig.
- MXF
volume
- ZZ
level
- 02
type
- DR
role
- E
number
- 60100

GENERAL NOTES

1. Do not scale from this drawing.
2. Print this drawing in colour.
3. This drawing is to be read in conjunction with all other MXF documents (drawings, schedules and specification) along with other design team documentation.
4. This is a performance specified system as set out in Spec 200 section 4.2. The contractor undertakes the design. This drawing is indicative of the design intent and is to be completed by NSI Approved Specialist Designer.
5. All electrical works are to be designed installed and tested to BS 7671 : 2018 (18th Edition of the Wiring Regulations).
6. Refer to the Architects & Fire consultants information for Emergency Door requirements and general information. Setting out of all equipment in public spaces is to be confirmed with the Architect.
7. All power and security cabling to be as per Cable Type Schedule.
8. All security cabling to have a minimum Construction Products Regulation Euroclass of Cca-s1b-d2-a2.

KEY

- AC Access Control Point
CR Card Reader
IC Intercom Remote Handset
CCTV PTZ Camera
S Door Strike Lock
E Egress Button
EB Emergency Break Glass
HL Handle Lock with Proximity Reader
HLK Handle Lock with Proximity Reader and Keypad
HELP Help Point
IC Intercom Entrance Panel
DCU Door Cotrol Unit
INT Intruder Alarm Panel
P Panic Alarm
PIR PIR Presence Detector
DCS Door Contact Sensor
K Security Keypad
W Vibration Sensor



MAX FORDHAM

www.maxfordham.com

client
Little Dukes Education

job no.
J7268

project leader
AJS

scale at A1
1 : 100

status code and description
S4 - Preliminary

project name
Belsize Park Gym

issue date
03/11/23

revision
P03

classification
Ss_75_40_00_00

drawing title
Security, Access Control & CCTV

Level 03

project code
J7268

orig. volume level type role number
- MXF - ZZ - 03 - DR - E - 60100