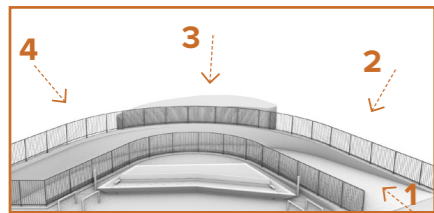
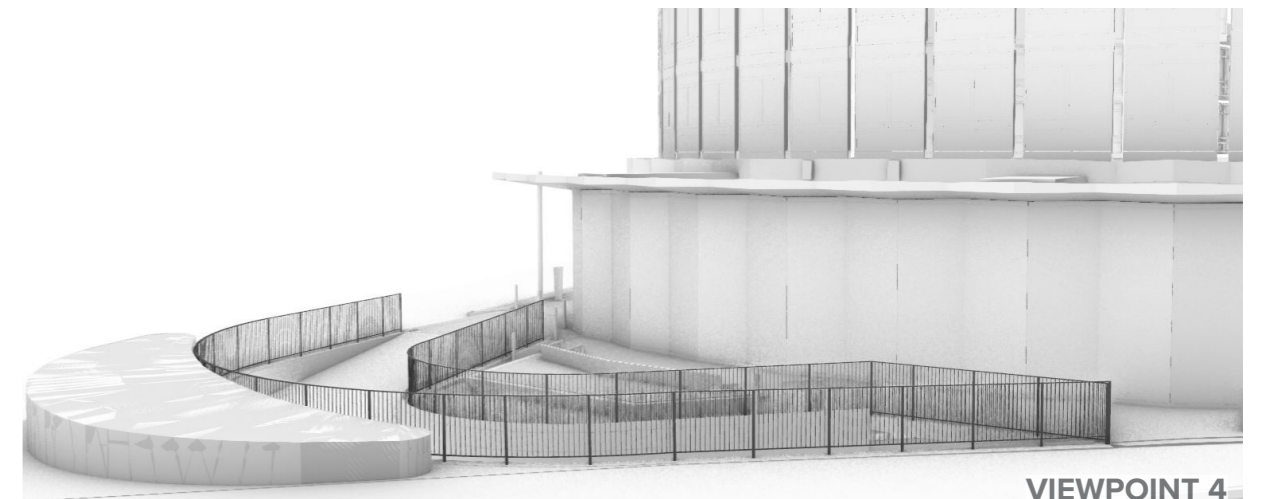
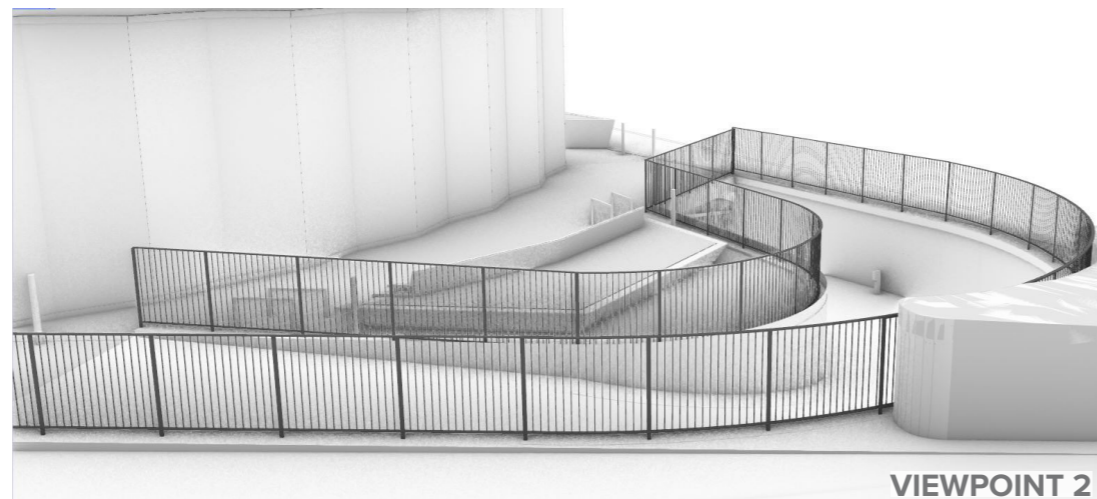
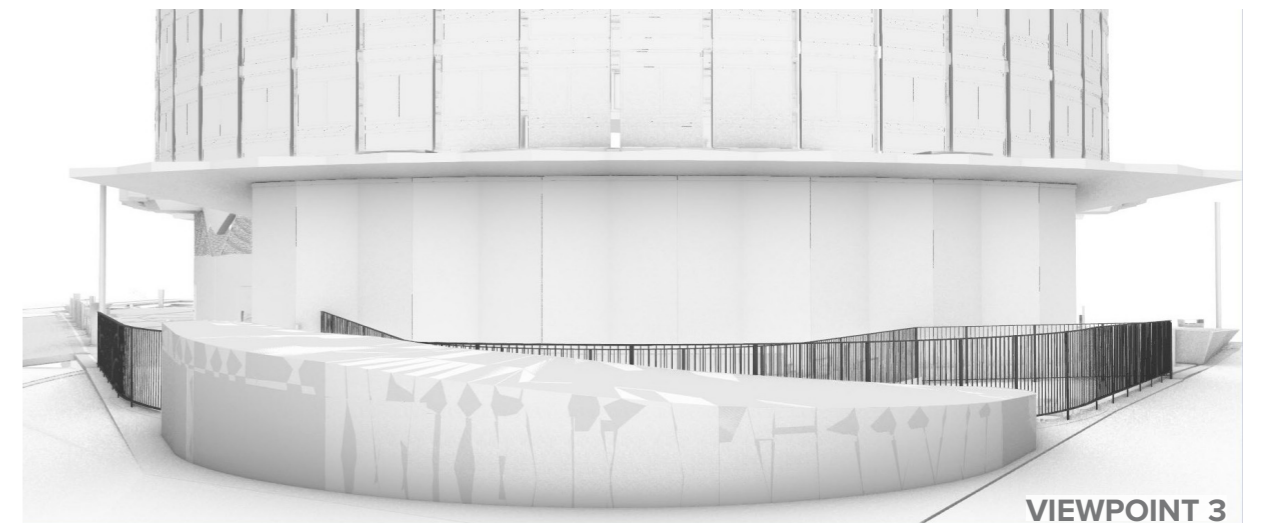
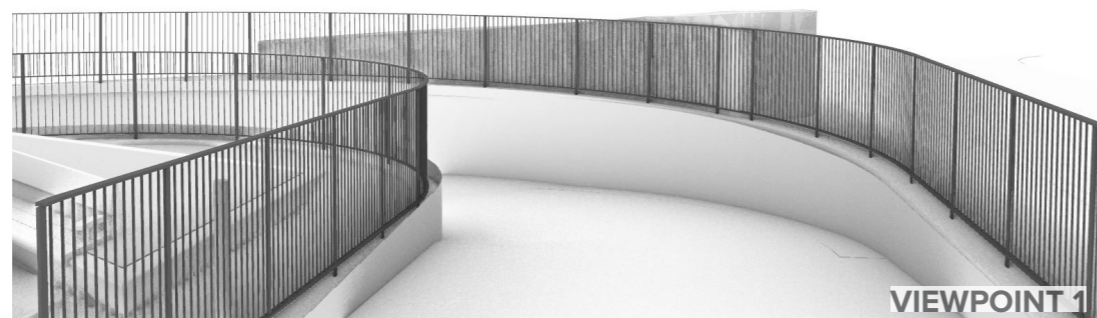
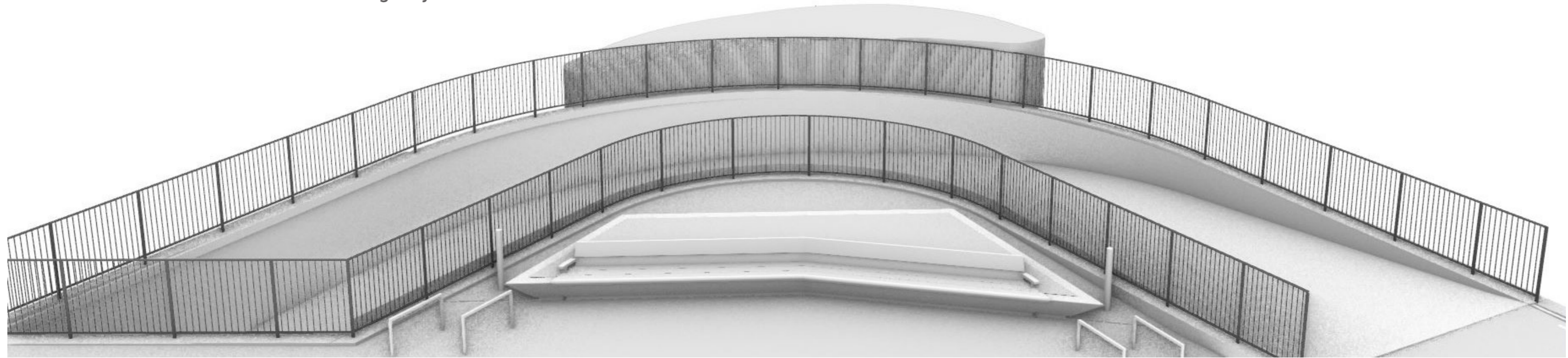


2.3 LANDSCAPE PROPOSALS - STREET FURNITURE

3D VIEWS OF APPROVED RAILING DESIGN

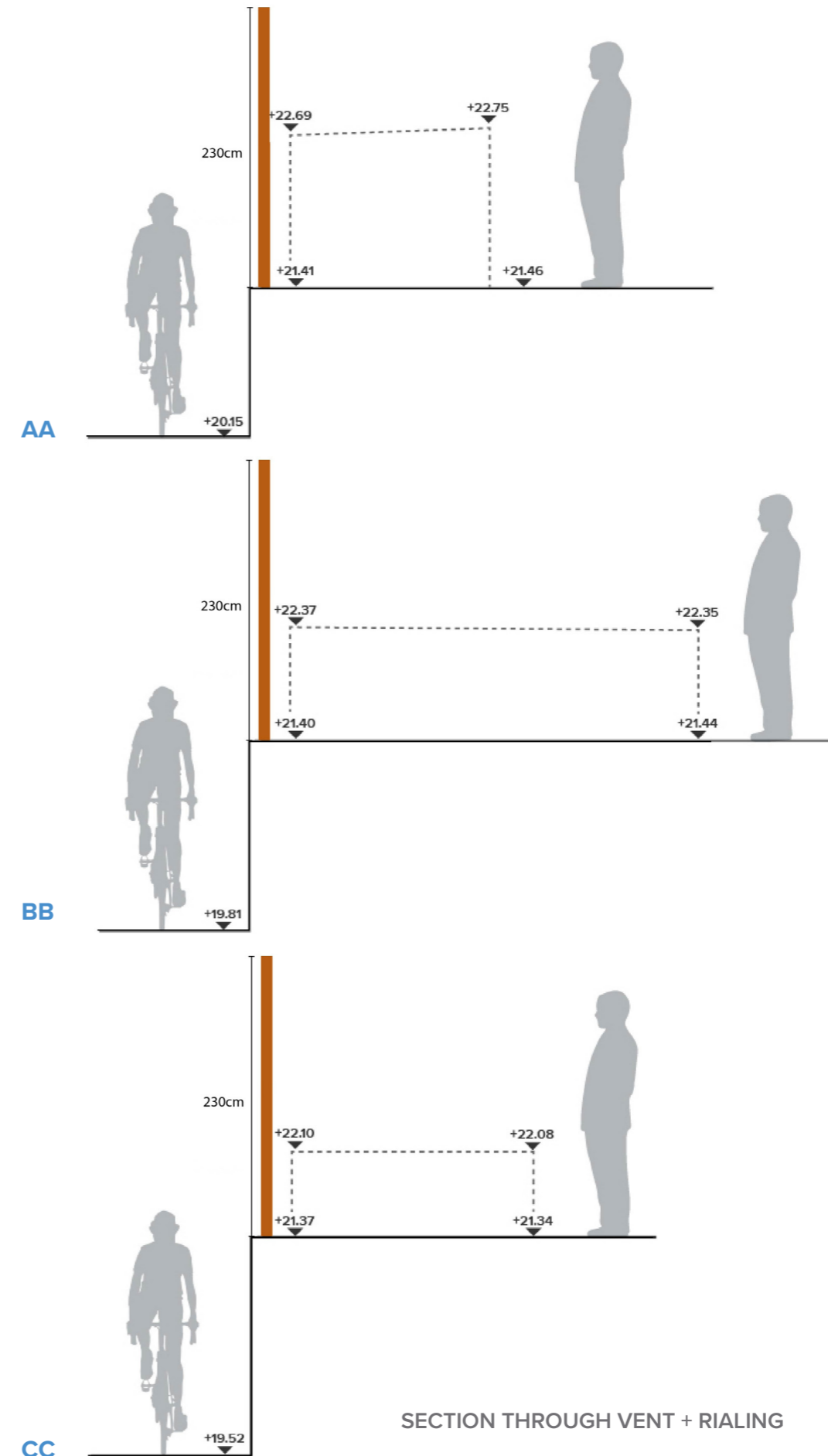
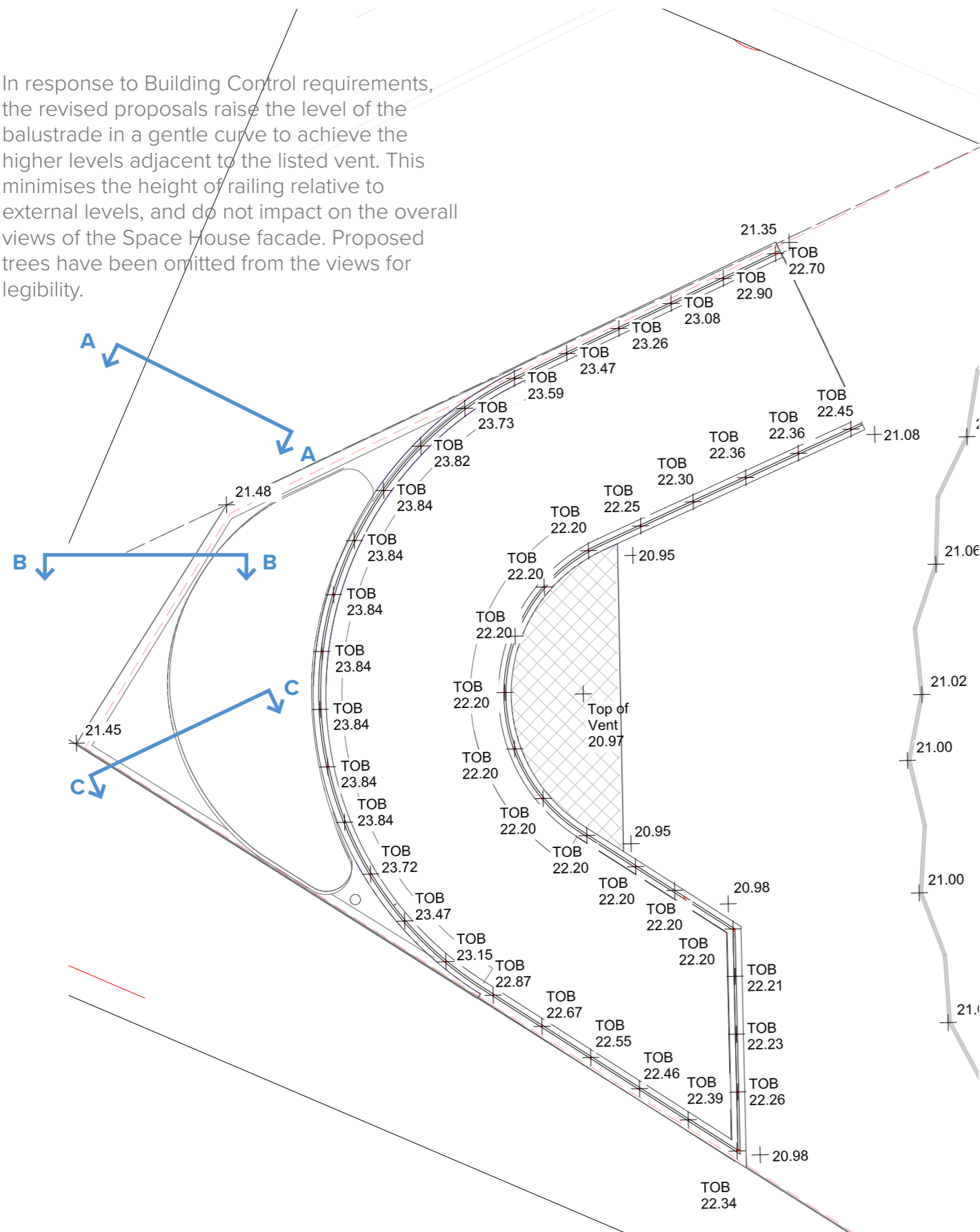
- Continuous 1200mm above concrete railings
- Planter Trees Removed from view for legibility



2.4 LANDSCAPE PROPOSALS - STREET FURNITURE

RAILING DESIGN DEVELOPMENT

In response to Building Control requirements, the revised proposals raise the level of the balustrade in a gentle curve to achieve the higher levels adjacent to the listed vent. This minimises the height of railing relative to external levels, and do not impact on the overall views of the Space House facade. Proposed trees have been omitted from the views for legibility.



SECTION THROUGH VENT + RAILING

2.4 LANDSCAPE PROPOSALS - STREET FURNITURE

3D VIEWS OF REVISED RAILING DESIGN

- Raise the railing 110 cm above the vent structure.
- Both sides of the railing extend following the ramps equally and consistently adhere to the vent slope until they reach a height of 120 cm minimum above FFL.
- Proposed Trees omitted from planter for legibility

