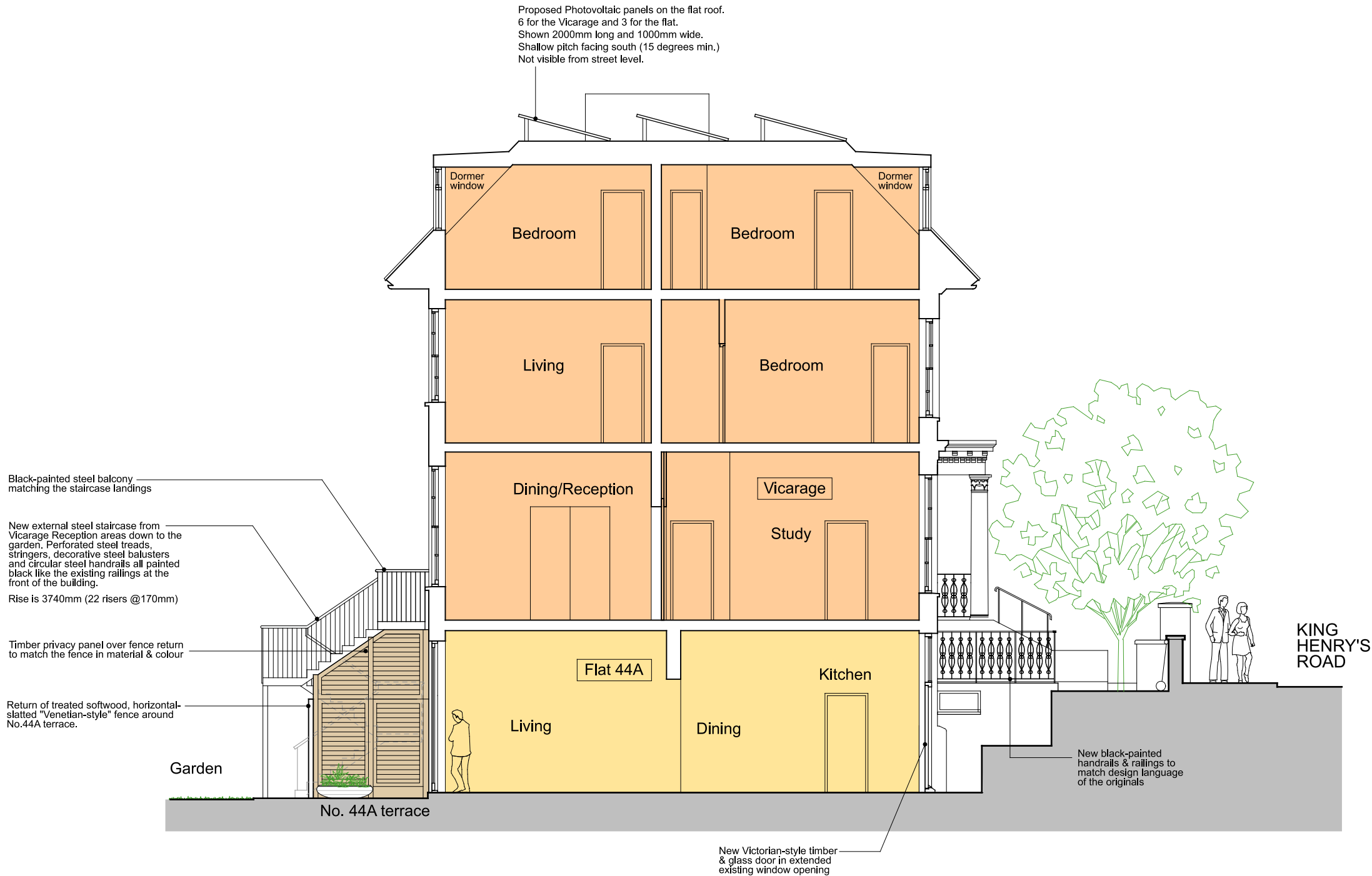
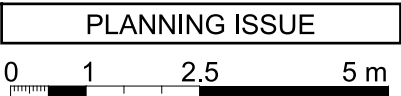
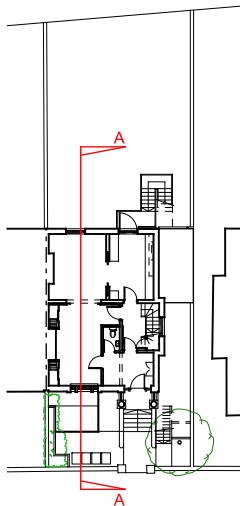


Dimensions are not to be scaled from this drawing.			
This drawing is based on current available information and should not be relied on as accurate measurements of usable space.			
This drawing is the property of the Colman Partnership Ltd, and Copyright is reserved by them. The drawing is issued on condition that it is not copied or disclosed by or to any unauthorised persons without the prior consent in writing of the Colman Partnership Ltd.			
Rev	Notes	By	Date
P1	Issued for Planning	SRH	14/07/23
P2	Flat terrace reduced, Vicarage garden increased.	SRH	21/07/23
P3	Disabled access lift removed	CC	11/01/24



KEY PLAN:



Project

44/44A King Henry's Road
London,NW3 3RP

Title

Proposed Section A-A

Scale	1:100 @ A3	1:50 @ A1	Date	13/02/2023
Drawn by	SRH	Checked by Proj. Arch.	Checked By Manager	
Drawing No.	22027/P(--)-300		Revision	
			P3	

The Colman Partnership Limited
27 Harcourt Street
London
W1H 4HP

Telephone : 020 7535 2040
Facsimile : 020 7535 2041
email: projects@colmanarchitects.co.uk

www.colmanarchitects.co.uk