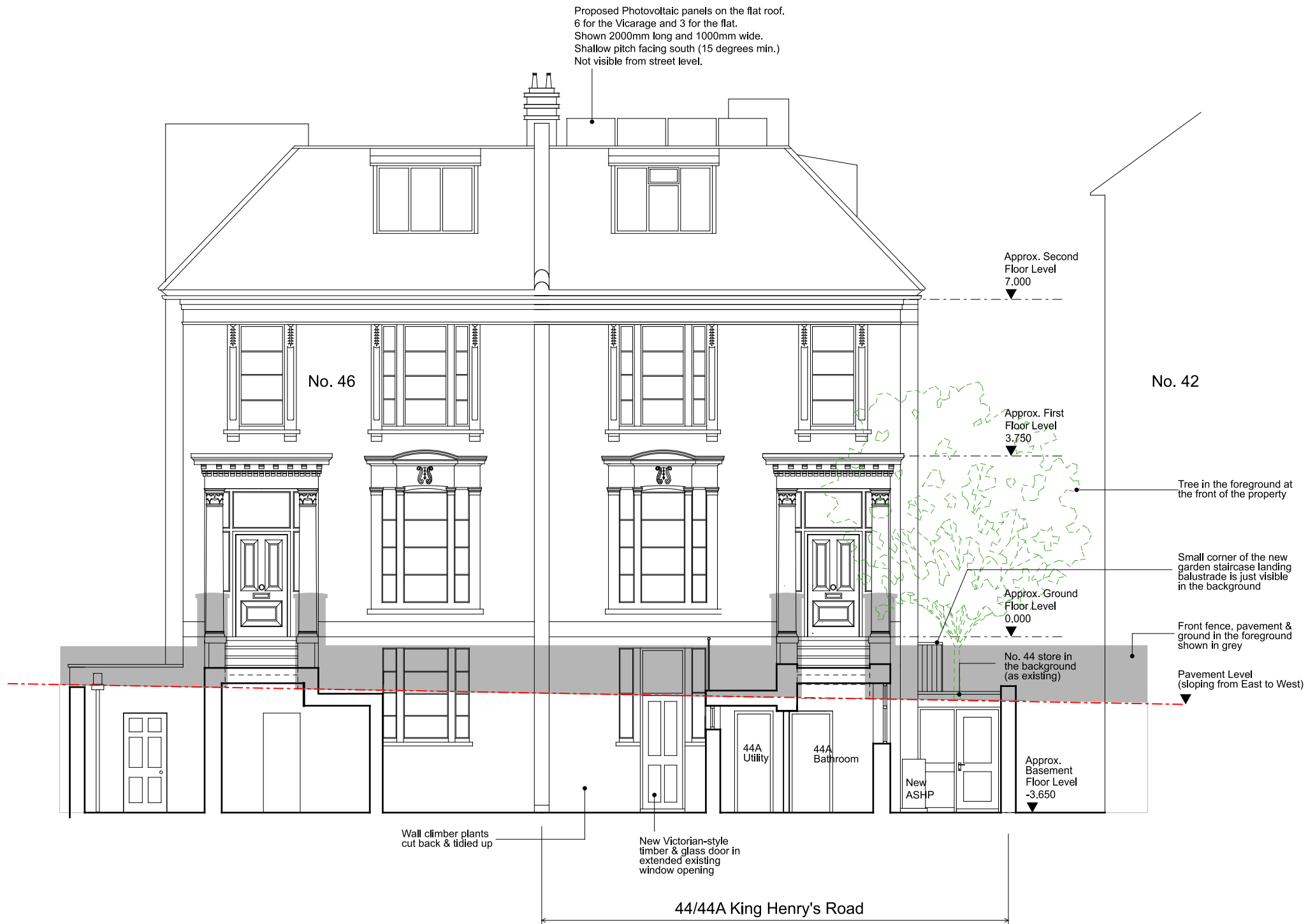
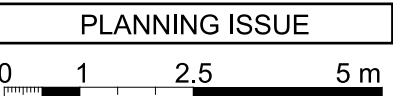
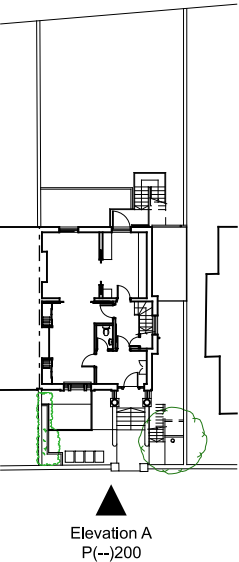


Dimensions are not to be scaled from this drawing. This drawing is based on current available information and should not be relied on as accurate measurements of usable space. This drawing is the property of the Colman Partnership Ltd, and Copyright is reserved by them. The drawing is issued on condition that it is not copied or disclosed by or to any unauthorised persons without the prior consent in writing of the Colman Partnership Ltd.			
Rev	Notes	By	Date
P1	Issued for Planning	SRH	14/07/23
P2	Disabled access lift removed	CC	11/01/24



KEY PLAN:



colman architects

Project  
44/44A King Henry's Road  
London, NW3 3RP

Title  
Proposed Front Elevation  
facing King Henry's Road

Scale 1:100 @ A3	1:50 @ A1	Date 08/02/2023
Drawn by SRH	Checked by Proj. Arch.	Checked By Manager
Drawing No. 22027/P(-)200	Revision P2	

The Colman Partnership Limited  
27 Harcourt Street  
London  
W1H 4HP

Telephone : 020 7535 2040  
Facsimile : 020 7535 2041  
email: projects@colmanarchitects.co.uk

www.colmanarchitects.co.uk

**REPLACEMENT WINDOWS**  
New replacement timber windows throughout. Most are to be replaced on a "like-for-like" basis. The few that are to be reconfigured are noted on the elevation above.

All new windows will be timber-framed and have frames painted white to match the original windows. The windows that are to be replaced on a "like-for-like" basis will:

- Fit into the existing openings
- Match the original fenestration pattern
- Match the existing opening method
- Match the size & placement of glazing bars. (Stuck-on glazing bars are discouraged).

For Building Regulations compliance, the target U-value for all windows is 1.6 W/m<sup>2</sup>K (or better).