

TELEPHONE  
+44 (0) 207 729 4140

EMAIL  
studio@dk-cm.com

WEBSITE  
www.dk-cm.com

ADDRESS  
3 Durham Yard  
Teesdale Street  
London, E2 6QF

PROJECT  
Kilburn Arches

DRAWN/  
CHECKED  
ED / EP

CLIENT  
Transport for London

SCALE  
1:10@A1  
1:20@A3

DRAWING TITLE  
Landscaping - Long Stay  
Cycle Parking

STATUS  
RIBA Stage 4

DRAWING NUMBER  
2108-S4-581-T0

CREATION DATE  
31.10.2022

#### NOTES

##### NOT FOR CONSTRUCTION

1. All co-ordinates, levels, dimensions to be confirmed on site by the Contractor and discrepancies reported to the architect immediately.
2. This drawing is to be read in conjunction with all Architects' & Engineers' drawings, details and specification.
3. All structural and below ground elements are to be designed by the Contractor's engineers.
4. Do not scale from these drawings, including in DWG format. Use figured dimensions only. All dimensions in mm, excluding finishes.
5. Definition of legal title and boundaries is outside of the architects scope, locations on site to be to be reviewed and confirmed by client.
6. For site information and dimensions please refer to commissioned measured survey. Coordinates based on OS National Grid.
7. Shop / fabrication drawings to be shared for all specialist elements.
8. Where provided, references are intended to support navigation and are not exhaustive.

##### DESIGN INTENT DRAWING

This drawing shows the Employer's requirements for the visual appearance, performance criteria, and general principles for integrating the detailed design of the installation into the total building and are for the Sub-contractor's guidance only. These drawings are to be used as a basis for design development and are not to be seen as final representations of the Design Team's requirements. Sub-contractors' shop drawings to be submitted for approval prior to fabrication.

##### GENERAL NOTES

1. Refer to the gazetteer for more information on the existing condition of each arch and external space.
2. As per the Preliminary UXO Risk Assessment, prior to or in lieu of a Detailed Assessment, it is recommended that appropriate UXO Risk Mitigation Measures are provided for intrusive works proposed.
3. All works within proximity to the historic structures are to implement relevant measures to protect historic fabric.
4. Works within proximity to TfL / NR structures and the approval processes / protections required, contractor to highlight in CPP and submit RAMS.

##### KEY

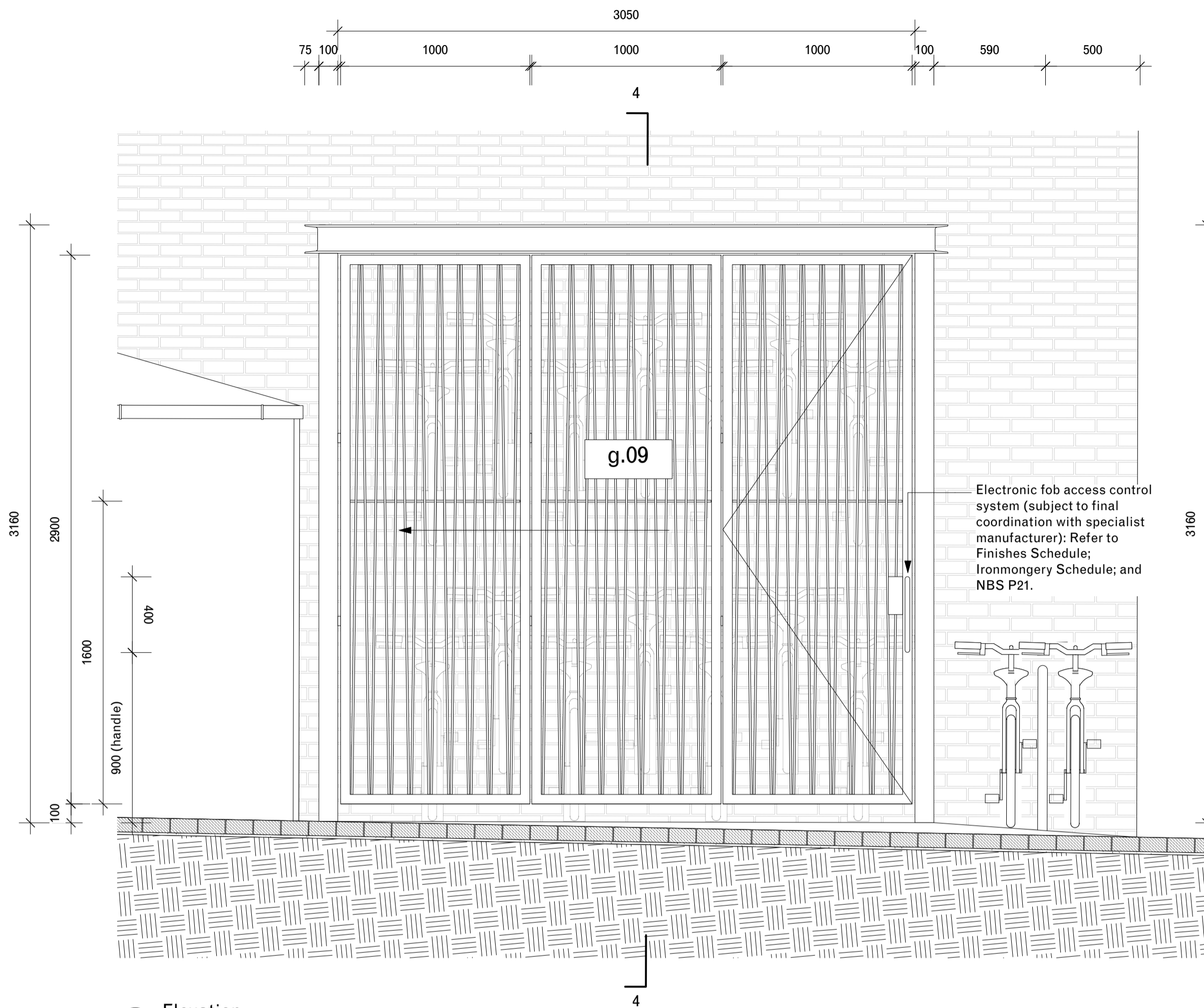
Build-ups shaded grey are existing and assumed - TBC by contractor

= - Approximate dimension, to be remeasured for confirmation by contractor on site prior to works.

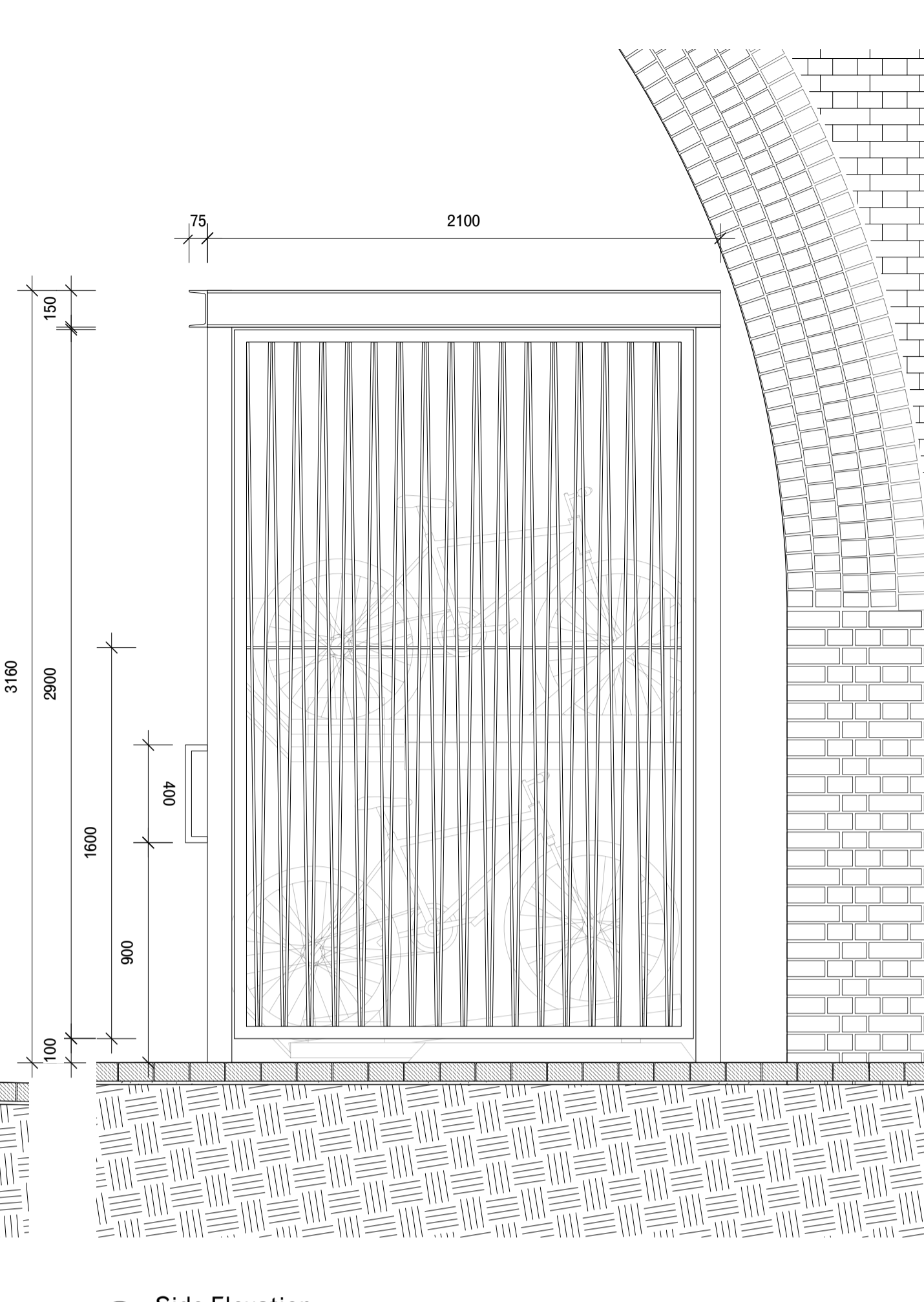
----- Geotextile membrane: refer to 2108-500s series drawings.

##### Revision

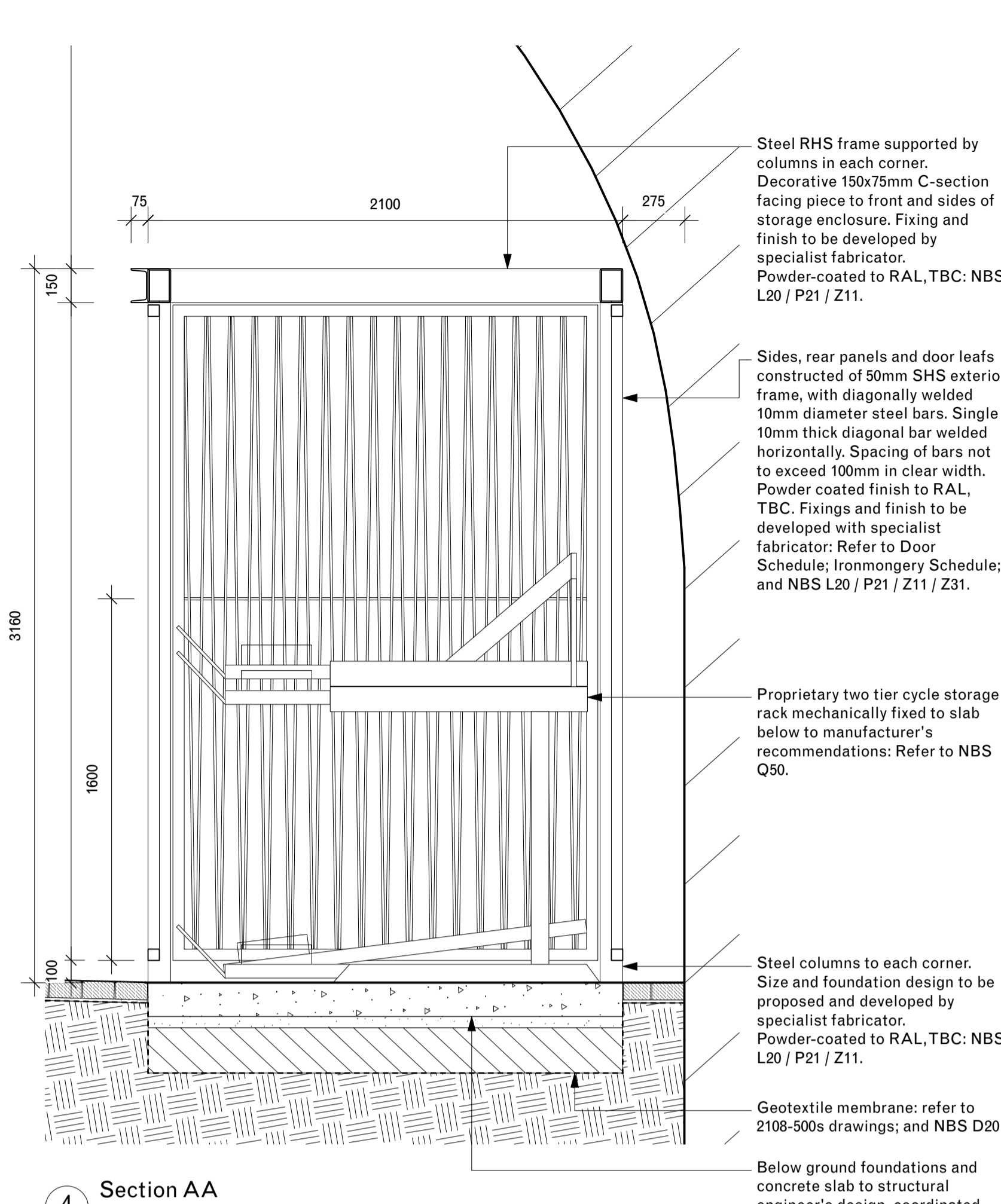
To	Tender	13/06/2023



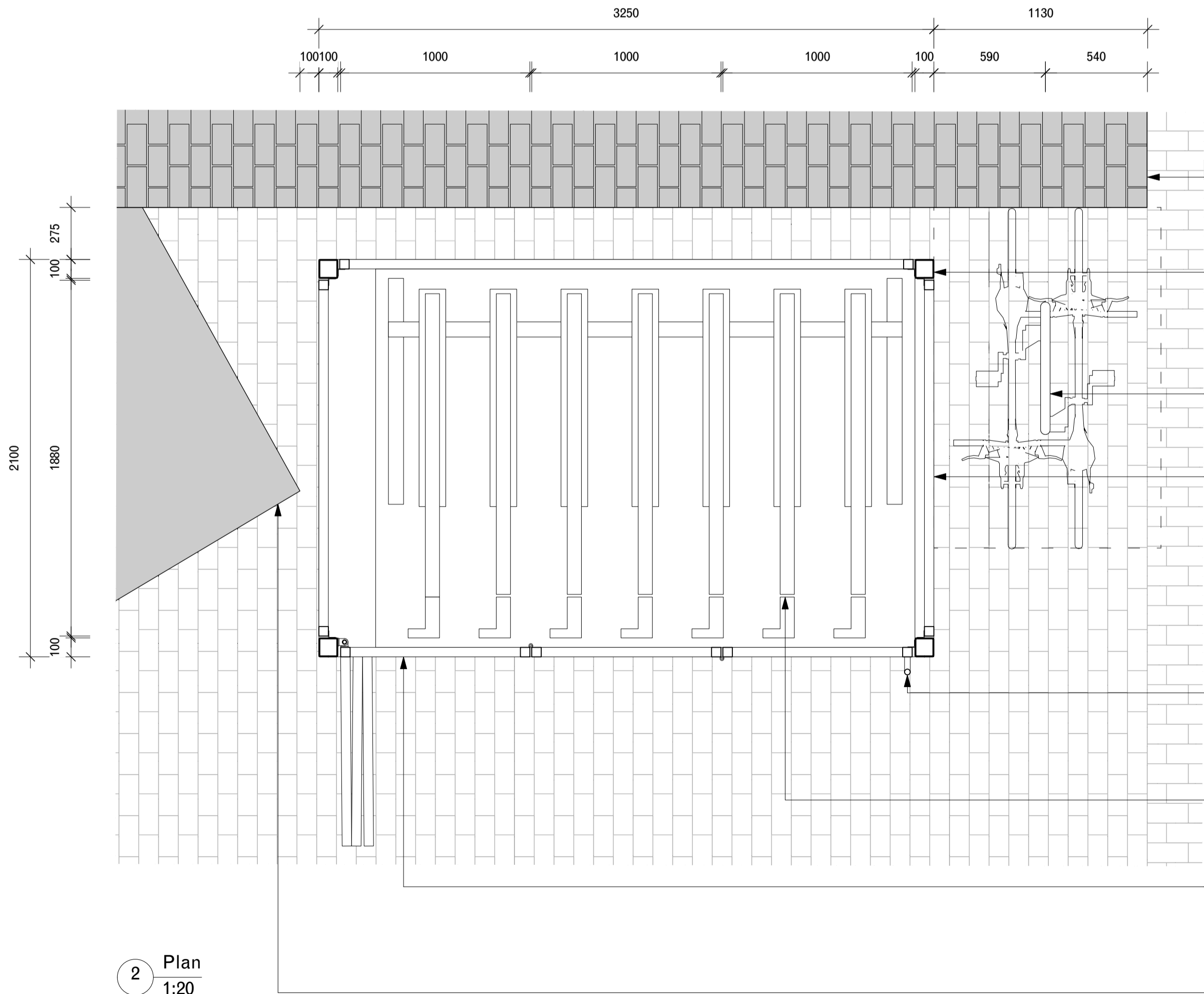
1 Elevation  
1:20



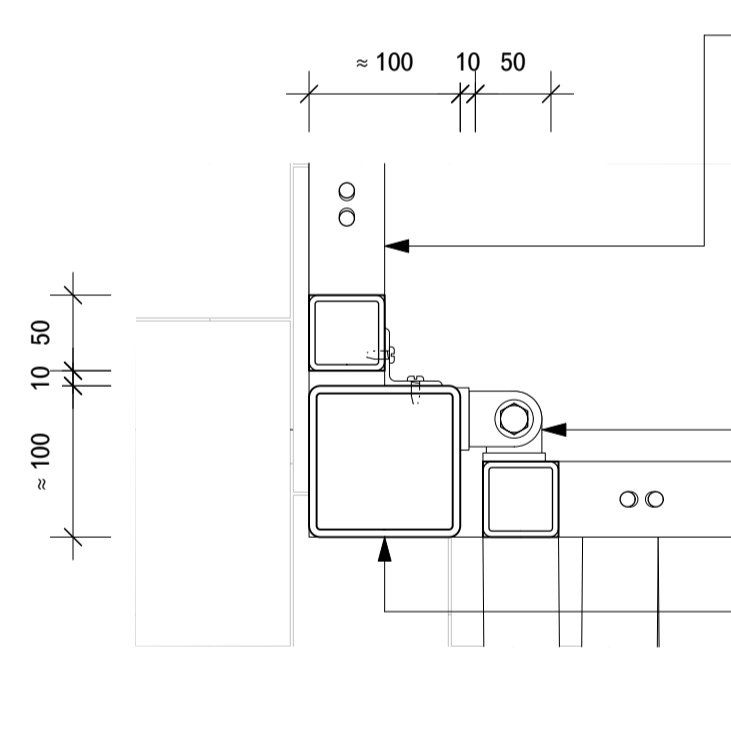
3 Side Elevation  
1:20



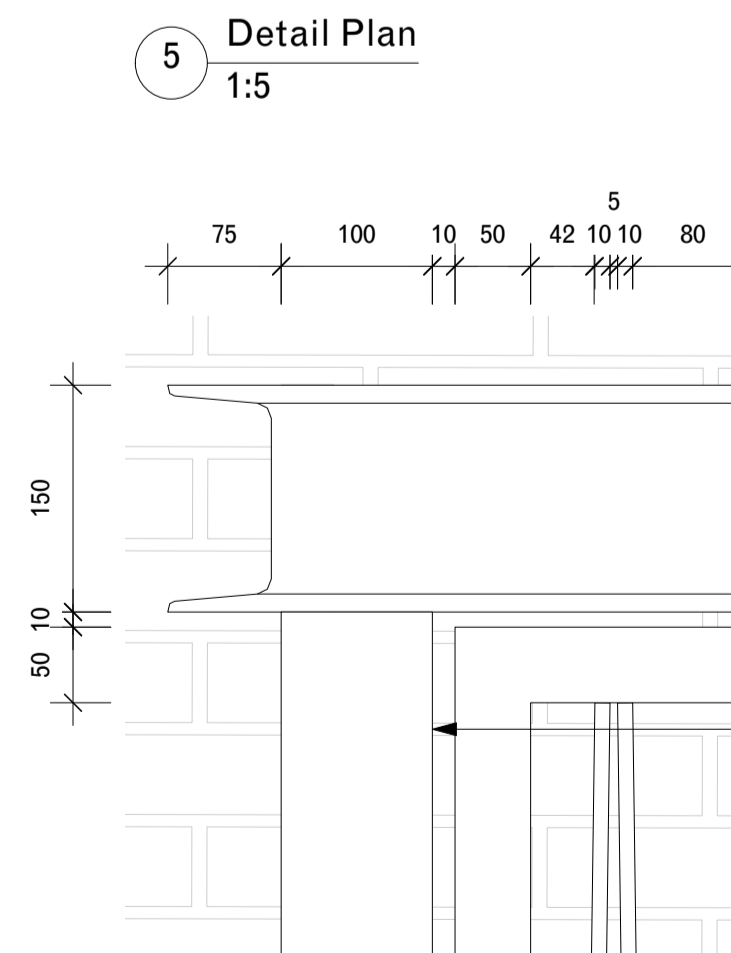
4 Section AA  
1:20



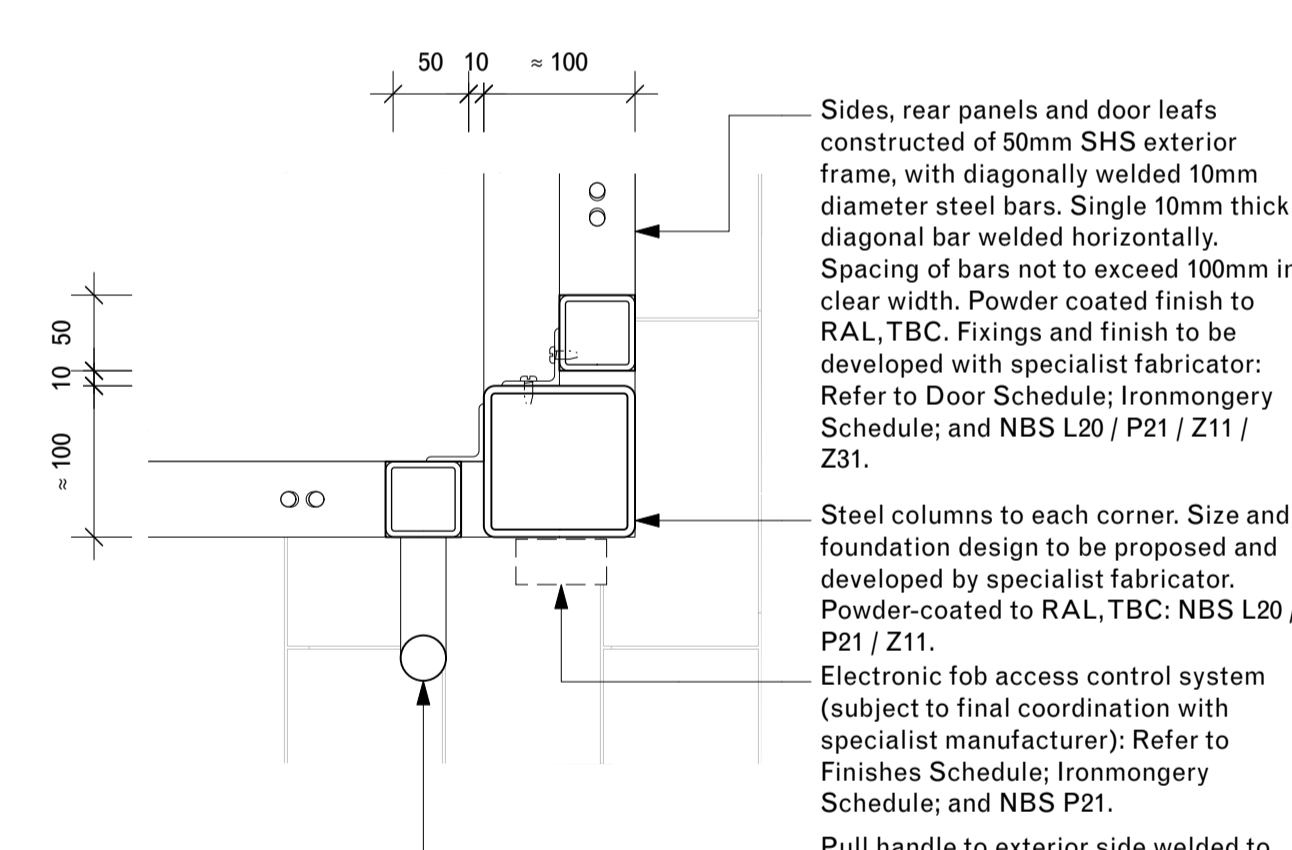
2 Plan  
1:20



5 Detail Plan  
1:5



7 Detail Elevation  
1:5



6 Detail Plan  
1:5