


DEMOLITION KEY

 PROPOSED DEMOLITION

Lisa Shell architects

EG2 Norway Wharf, 24 Hartford Road, N1 5GT
T. 020 7276 7278 E. info@lisashellarchitects.co.uk
www.lisashellarchitects.co.uk

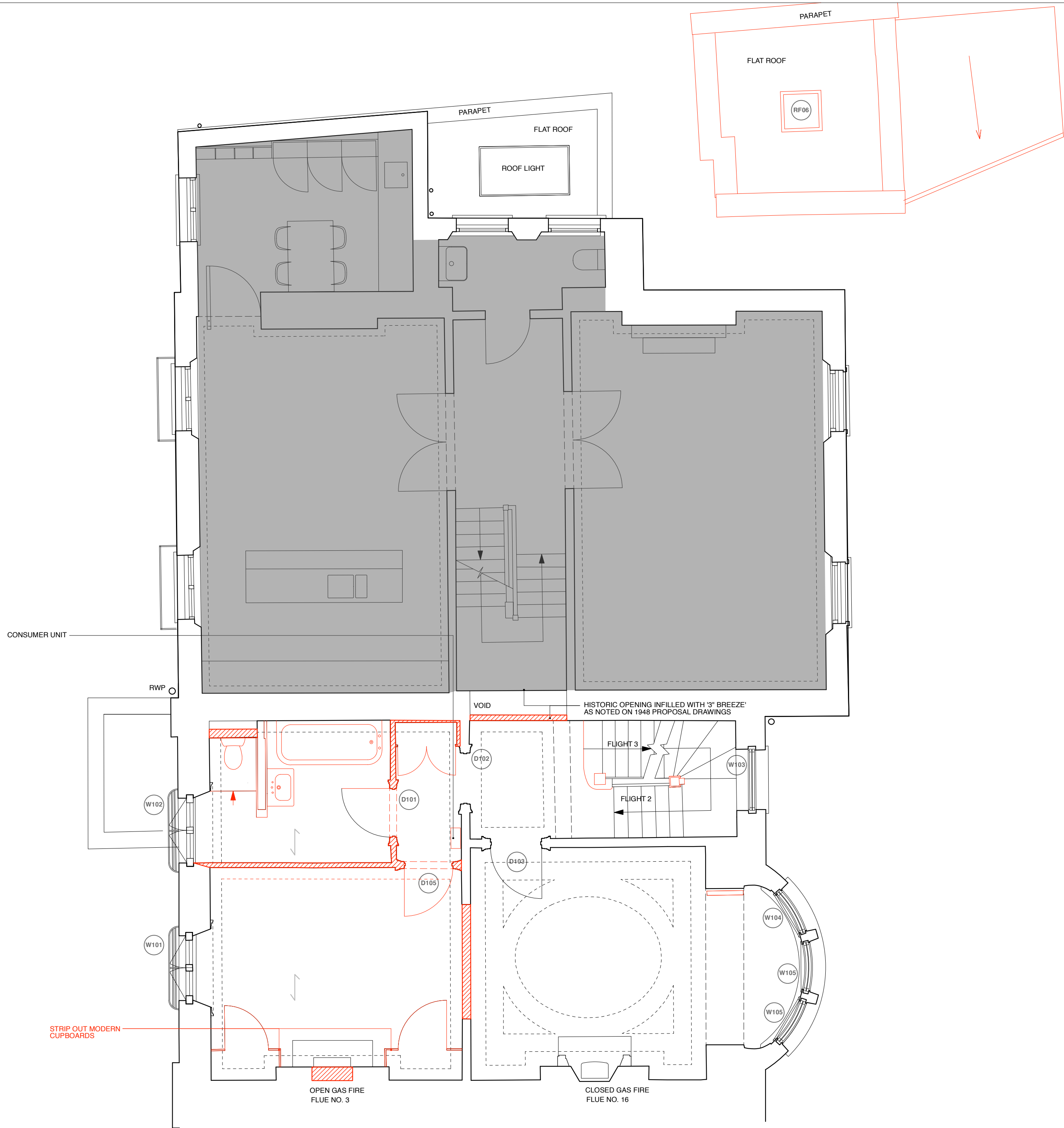
Chartered Lisa Shell Architects, Registered in England No. 10000000
Registration No. 10000000, Limited by Guarantee, 2015

**7 THE GROVE, HIGHGATE,
LONDON N6 6JU**

**GROUND FLOOR PLAN
PROPOSED DEMOLITION
GRO7 / D / 002 / C1**
1:50 @ A2
REFER ALL DISCREPANCIES TO ARCHITECT

REVISIONS/ ISSUE

- 29/04/21
ISSUE TO ASBESTOS SPECIALIST
FOR INFO
- 09/07/21 A
ISSUE TO PLANNING
FOR APPROVAL
- 06/10/21 B
ISSUE TO PLANNING
FOR APPROVAL
- 09/11/21 C
ISSUE TO PLANNING
FOR APPROVAL
- 21/12/2023 C1
ISSUE TO PLANNING
FOR APPROVAL



DEMOLITION KEY	
	PROPOSED DEMOLITION

Lisa Shell
architects

EGG Norway Wharf, 84 Hartford Road, N1 5QT
T. 020 7276 7278 E. info@lisashellarchitects.co.uk
www.lisashellarchitects.co.uk

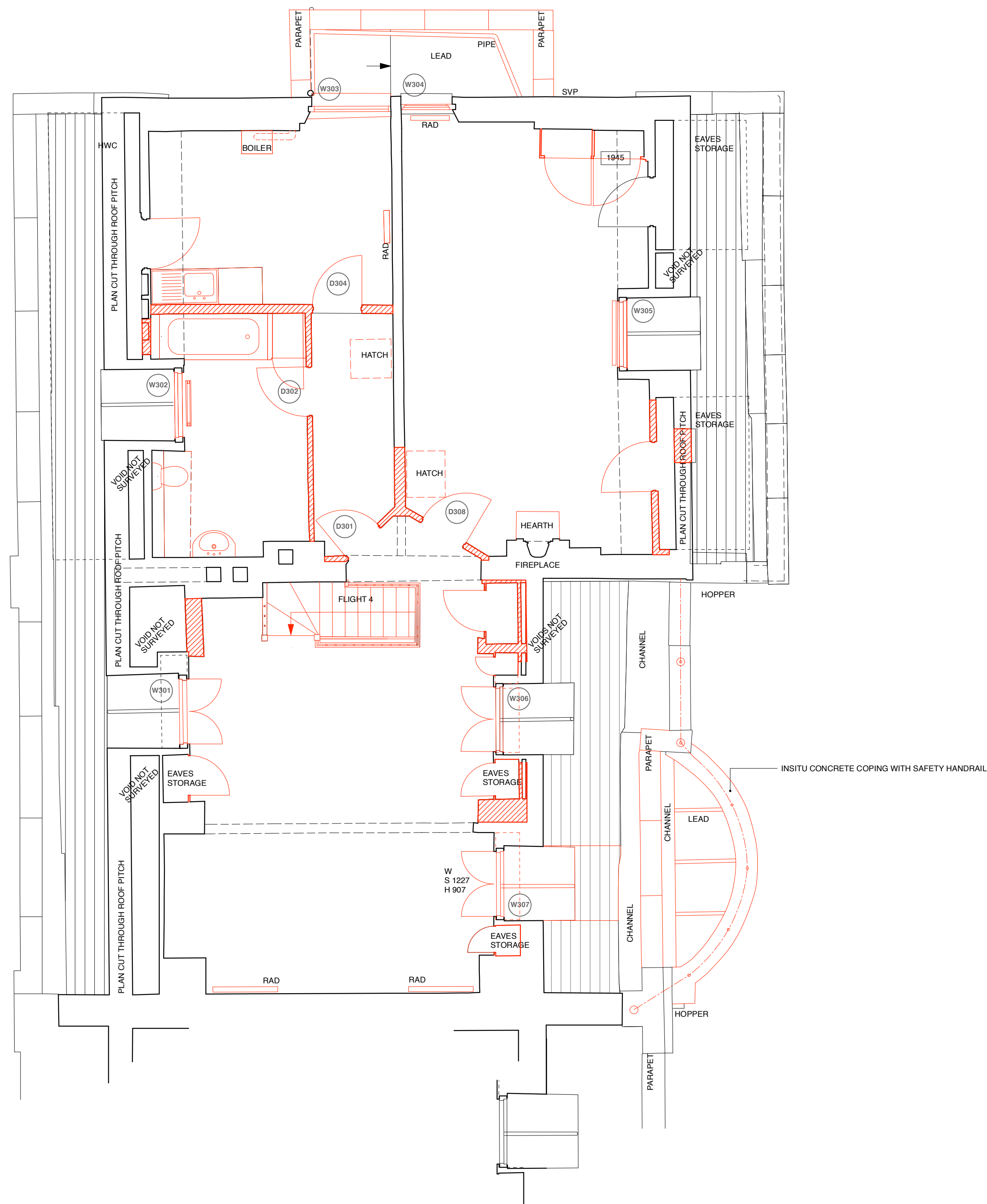
Chartered Lisa Shell RIBA Registered in England No. 4000000
Registration number 4000000, Licence no. 4000000

7 THE GROVE, HIGHGATE,
LONDON N6 6JU

FIRST FLOOR PLAN
PROPOSED DEMOLITION
GRO7 / D / 003 / C1
1 : 50 @ A2
REFER ALL DISCREPANCIES TO ARCHITECT



REVISIONS/ ISSUE	
29/04/21	ISSUE TO ASBESTOS SPECIALIST FOR INFO
09/07/21	A ISSUE TO PLANNING FOR APPROVAL
09/10/21	B ISSUE TO PLANNING FOR APPROVAL
09/11/21	C ISSUE TO PLANNING FOR APPROVAL
21/12/2023	C1 ISSUE TO PLANNING FOR APPROVAL



DEMOLITION KEY	
	PROPOSED DEMOLITION

Lisa Shell architects
EG28 Norway Wharf, 24 Hartford Road, N1 5QT
T. 020 7276 7278 E. info@lisashellarchitects.co.uk
www.lisashellarchitects.co.uk
Chartered Lisa Shell RIBA Registered in England No. 4400585
Registration details: 2004-05-01, 2005-01-01, 2006-01-01, 2007-01-01

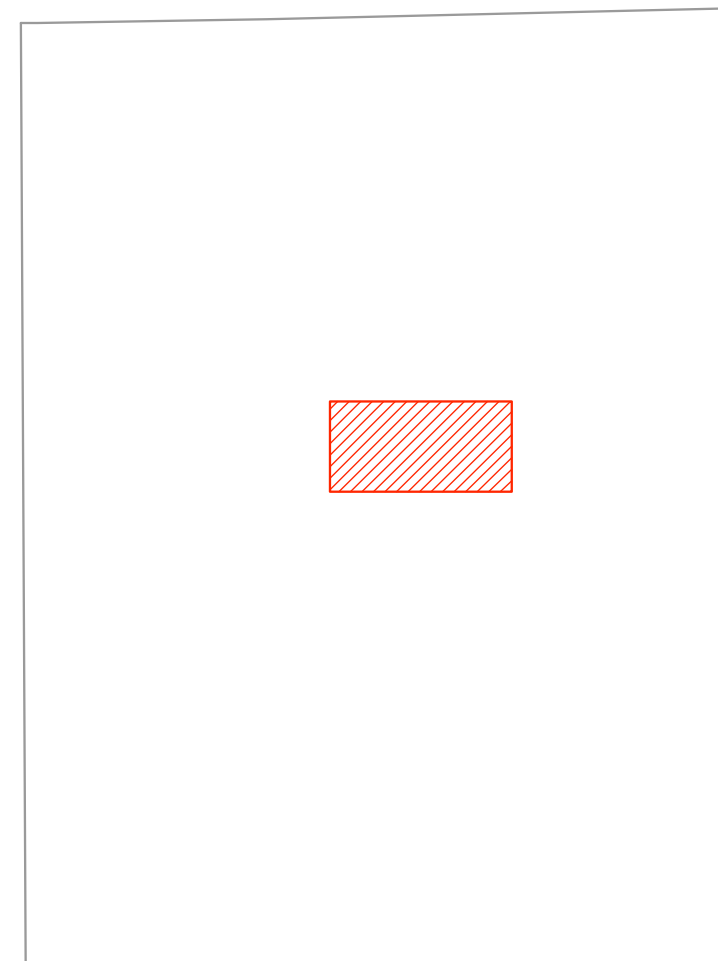
7 THE GROVE, HIGHGATE,
LONDON N6 6JU

THIRD FLOOR PLAN
PROPOSED DEMOLITION
GRO7 / D / 005 / B1
1 : 50 @ A2
REFER ALL DISCREPANCIES TO ARCHITECT

REVISIONS/ ISSUE

29/04/21
ISSUE TO ASBESTOS SPECIALIST
FOR INFO

NEW DRAWING REF
09/07/21
ISSUE TO PLANNING
FOR APPROVAL
09/10/21 A
ISSUE TO PLANNING
FOR APPROVAL
09/11/21 B
ISSUE TO PLANNING
FOR APPROVAL
21/2/2023 B1
ISSUE TO PLANNING
FOR APPROVAL



NEW DRAWING REF

09/07/21
ISSUE TO PLANNING
FOR APPROVAL

09/10/21 A
ISSUE TO PLANNING
FOR APPROVAL

09/11/21 B
ISSUE TO PLANNING
FOR APPROVAL

21/2/2023 B1
ISSUE TO PLANNING
FOR APPROVAL