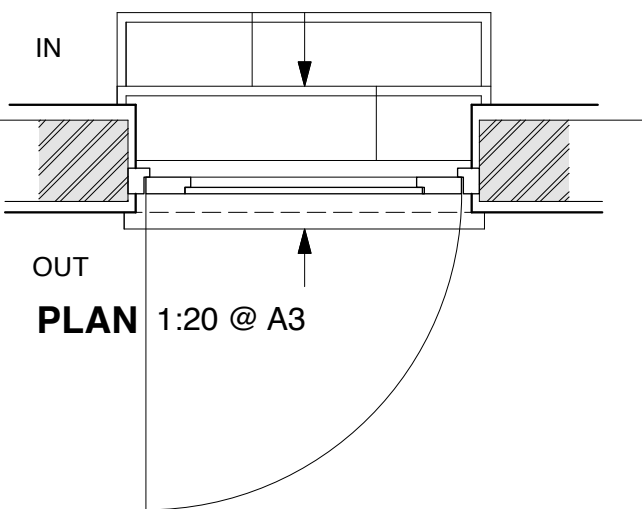
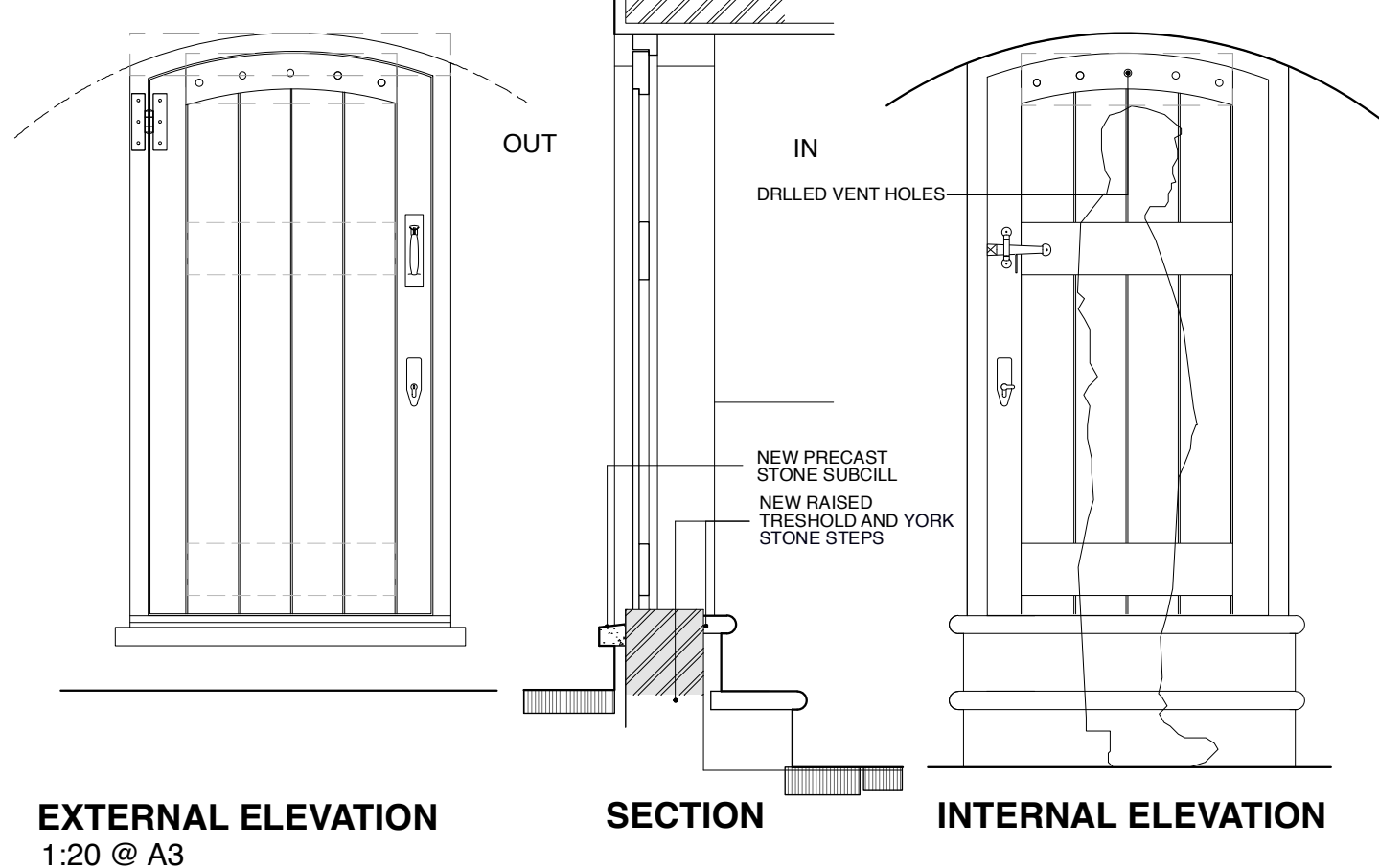


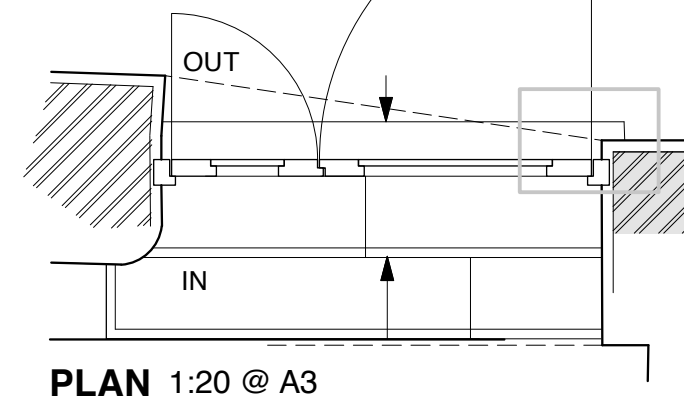
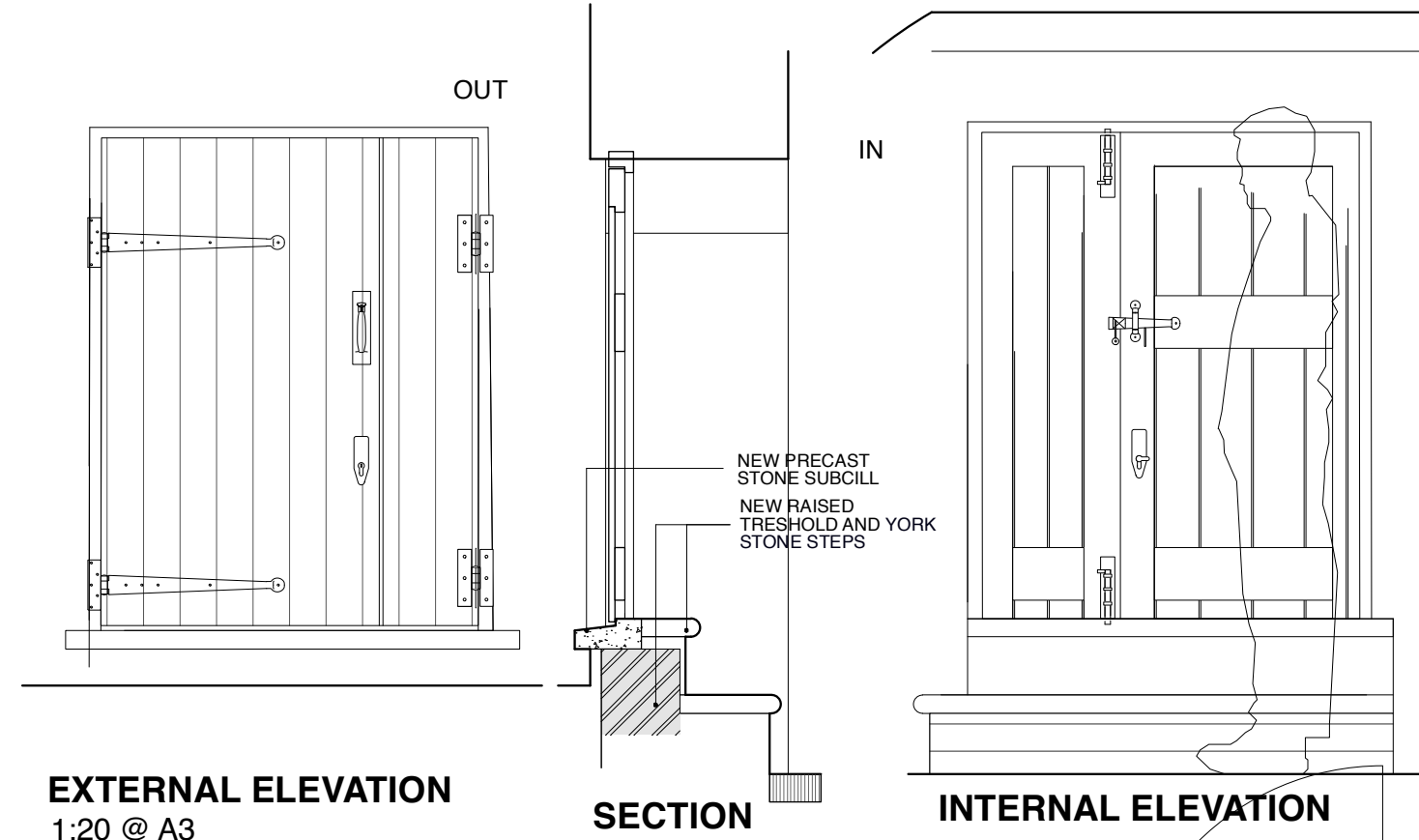
## DB18 & DB19: WORKSHOP AND NORTH STORE



## NOTES

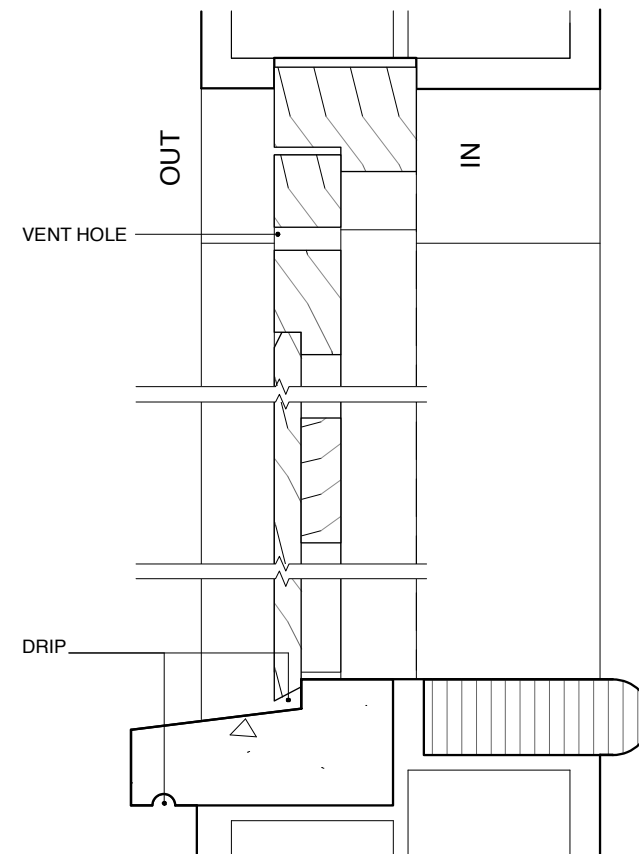
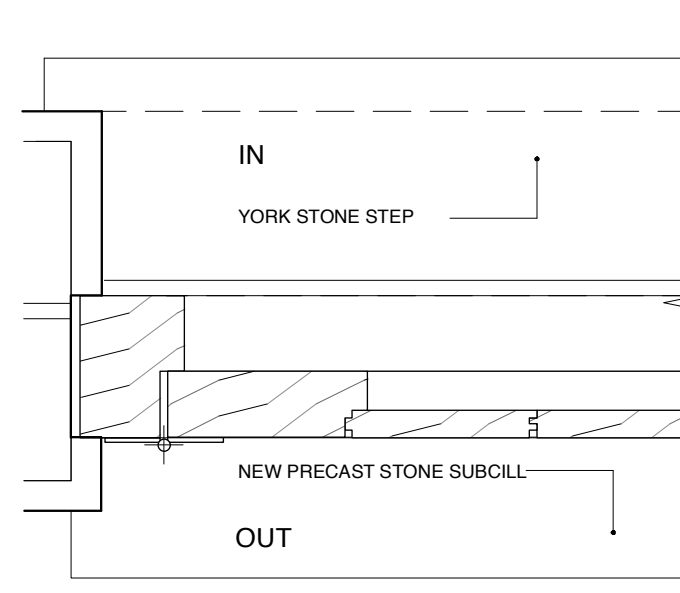
TO BE READ IN CONJUNCTION WITH 1:50 PLANS AND ELEVATIONS  
CONTRACTOR TO PROVIDE SHOP DRAWINGS & IRONMONGERY  
SAMPLES FOR APPROVAL BY ARCHITECT  
CONTRACTOR TO PROVIDE PAINT SAMPLES FOR APPROVAL BY  
ARCHITECT

## DB20: METER VAULT



### TYPICAL SECTION DETAIL 1:5 @ A3

### TYPICAL PLAN DETAIL 1:5 @ A3



## SPECIFICATION



**OPENINGS**  
EXISTING ARCHED HEAD, JAMBS & RAISED THRESHOLD WITH NEW PRECAST  
STONE SUBCELL FOR PAINT FINISH

**JOINERY**  
*NEW FRAME WITH LEDGED, FRAMED & BOARDED DOOR*  
FRAME: REBATED EX 63 X 100 WITH EX SUITABLE HEAD FRAME CUT TO ARCH  
LEAF: EX 50 X 100 STILES  
EX 50 X 150 HEAD RAIL CUT TO ARCH  
EX 32 X 150 CROSS AND BASE RAIL,  
EX 25 X 150 T&G BOARDING

**TIMBER & FINISH**  
ACCOYA MODIFIED SW FOR SITE HAND-PAINT FINISH IN DARK EGGSHELL  
**IRONMONGERY**  
BLACK IRON FACE-FIXED HINGES  
BANHAM MORTICE DEADLOCK IN SATIN BLACK FINISH WITH THUMB TURN TO  
INTERIOR  
BLACK IRON SUFFOLK LATCH  
BACK IRON SURFACE BOLTS TO NON-LEADING LEAF WITH STRIKING PLATES



## REVISIONS/ ISSUE

01/06/2023  
ISSUE TO **PLANNING**  
FOR DOC3: DETAIL

**1:5 @ A3**



**1:20 @ A3**



7 THE GROVE, HIGHGATE, LONDON N6 6JU

**NEW EXTERNAL BASEMENT DOORS: DG18; 19 & 20**

**GRO7 / CO-P / 102 / A**

1:20/5 @ A3; 1:10/2.5 @ A1

DO NOT SCALE FROM THIS DRAWING  
REFER ALL DISCREPANCIES TO ARCHITECT

DG12:  
GROUND FLOOR  
BOOT ROOM

EXTERNAL ELEVATION  
1:20 @ A3

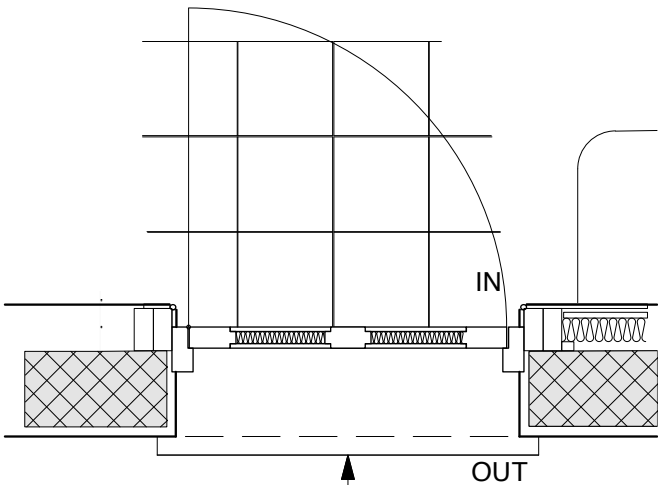
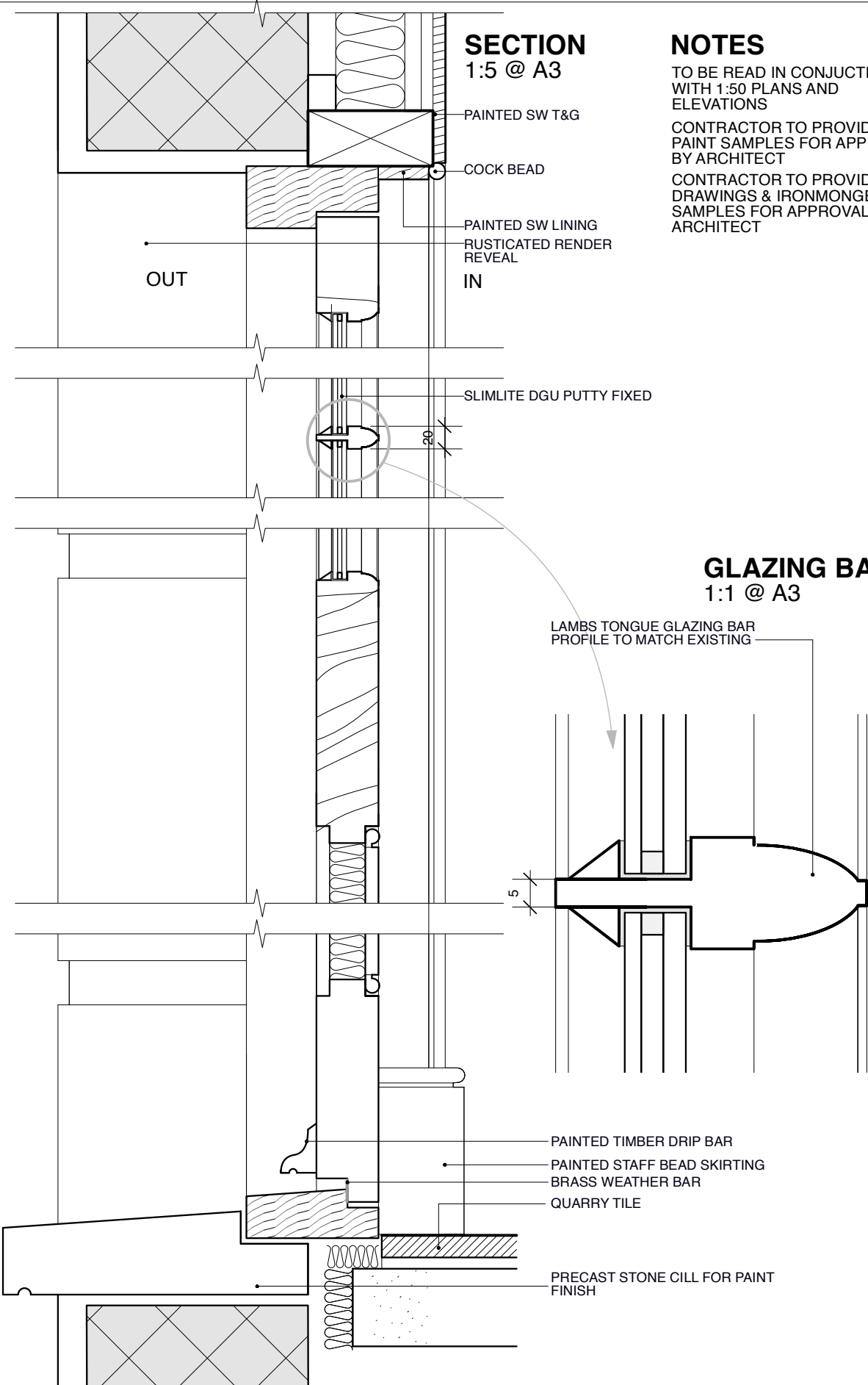
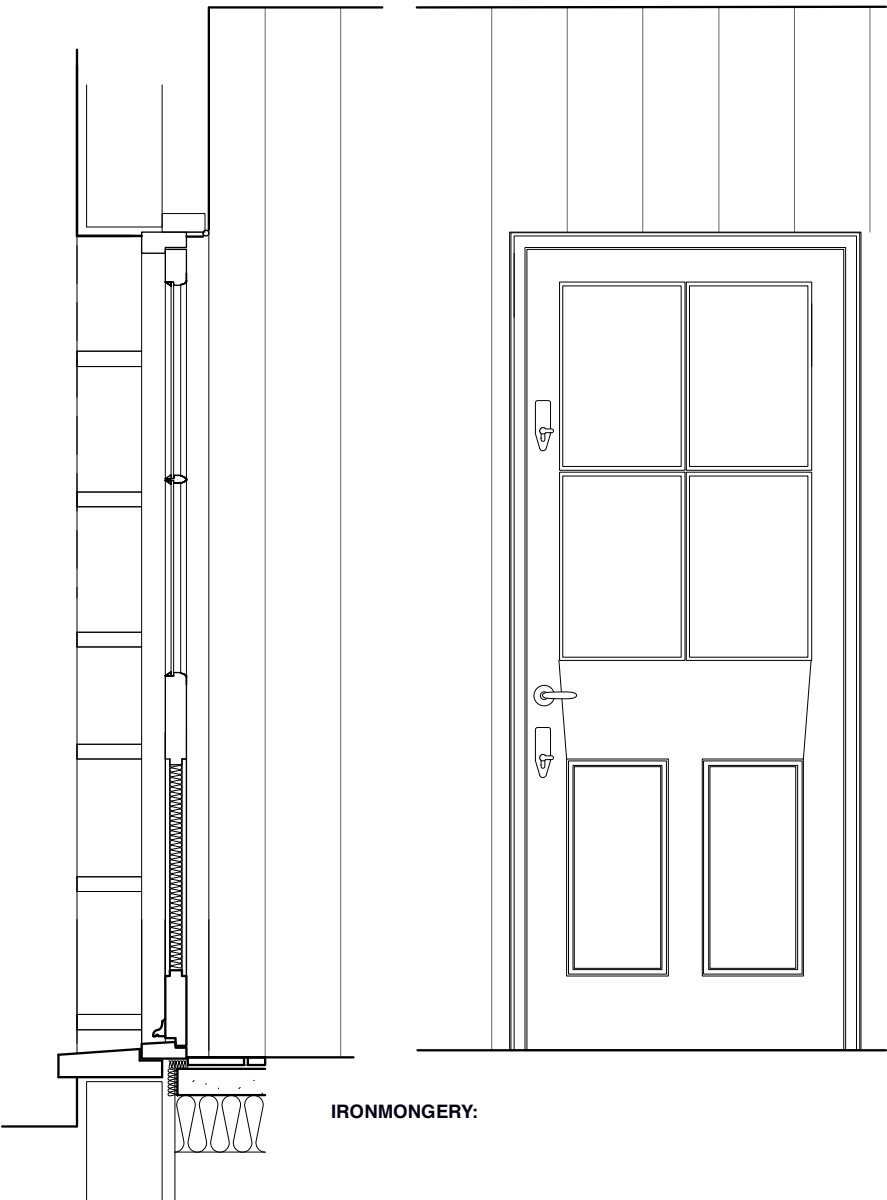
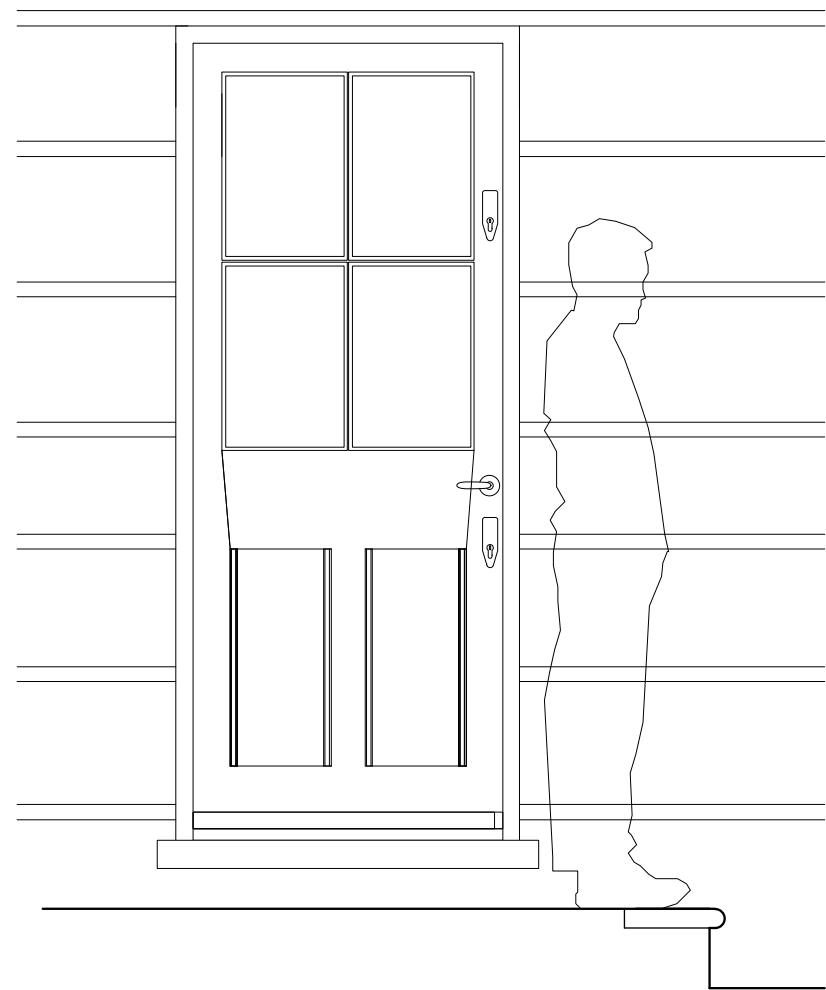
SECTION

INTERNAL ELEVATION

SECTION  
1:5 @ A3

NOTES

TO BE READ IN CONJUNCTION  
WITH 1:50 PLANS AND  
ELEVATIONS  
CONTRACTOR TO PROVIDE  
PAINT SAMPLES FOR APPROVAL  
BY ARCHITECT  
CONTRACTOR TO PROVIDE SHOP  
DRAWINGS & IRONMONGERY  
SAMPLES FOR APPROVAL BY  
ARCHITECT



PLAN 1:20 @ A3

**OPENING**  
NEW OPENING WITH PAINTED RENDER REVEALS AND NEW PRECAST STONE SUBCILL FOR PAINT FINISH

**TIMBER & FINISH**  
ACCOYA MODIFIED SW FOR SITE HAND-PAINT FINISH IN DARK EGGSHELL

**JOINERY**  
NEW FRAME WITH HALF GLAZED AND INSULATED DOOR LEAF

FRAME: REBATED EX 63 X 125  
LEAF: EX 63 X 100/75 STILES  
EX 63 X 100 HEAD RAIL  
EX 63 X 250 CROSS RAIL  
EX 63 X 200 BASE RAIL  
EX 25 X 63 GLAZING BARS  
12MM THICK PANELS WITH DENSE POLYSTYRENE INSULATION BETWEEN  
PROFILED DRIP BAR WITH DRIP TO BOTTOM EDGE

**MOULDINGS**  
TIMBER LINING TO REVEALS WITH COCK BEAD AT JUNCTION WITH T&G CLADDING TO WALLS;  
150MM HIGH SW SKIRTING WITH STAFF BEAD TO TOP EDGE

**GLAZING**  
SLIMLITE OR SIMILAR DOUBLE GLAZED UNIT COMPRISING 3-4-4 TOUGHENED GLASS WITHOUT KITEMARK, BUTYL PUTTY FIXED

**DRAFT PROOFING**  
PUSH FIT BLACK RUBBER DRAFT PROOFING  
BRASS WEATHER BAR TO FOOT

**IRONMONGERY**  
DARK BRONZE FINISH SOLID DRAWN HINGES  
2 NO. BANHAM MORTICE DEADLOCKS DARK BRONZE FINISH WITH THUMB TURN TO INTERIOR  
LEVER HANDLE ON ROSE BRONZE FINISH FRANK ALLART 5412



Lisa Shell  
architects

EG2 Noorway Wharf, 24 Hertford Road, N1 5GT  
T. 020 7275 7278 E. mail@lisashellarchitects.co.uk

www.lisashellarchitects.co.uk

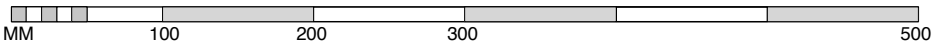
Director: Lisa Shell RIBA Registered in England No. 6555336  
Registration No. 6555336, Status: On the 10th Nov 2023, Status: SUB 17AF

REVISIONS/ ISSUE

01/06/2023  
ISSUE TO PLANNING  
FOR DOC3: DETAIL

21/12/2023 A  
ISSUE TO PLANNING  
FOR APPROVAL

1:5 @ A3



1:20 @ A3



7 THE GROVE, HIGHGATE, LONDON N6 6JU

NEW EXTERNAL GROUND FLOOR DOOR: DG12

GRO7 / CO-P / 111 / A

1:20/5 @ A3; 1:10/2.5 @ A1

DO NOT SCALE FROM THIS DRAWING  
REFER ALL DISCREPANCIES TO ARCHITECT

7 THE GROVE, HIGHGATE, LONDON N6 6JU

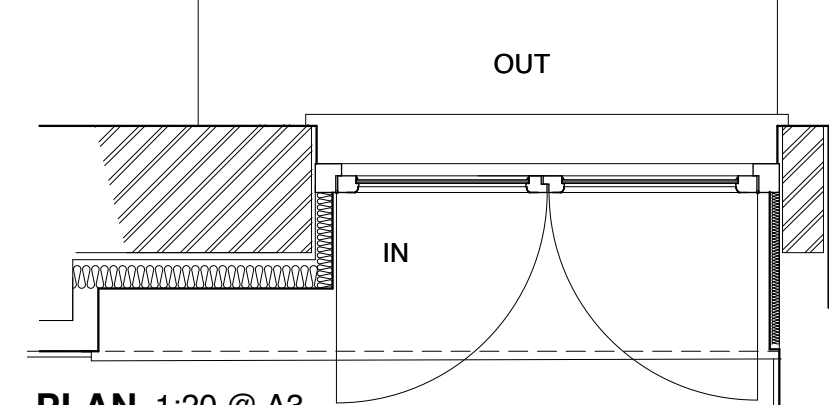
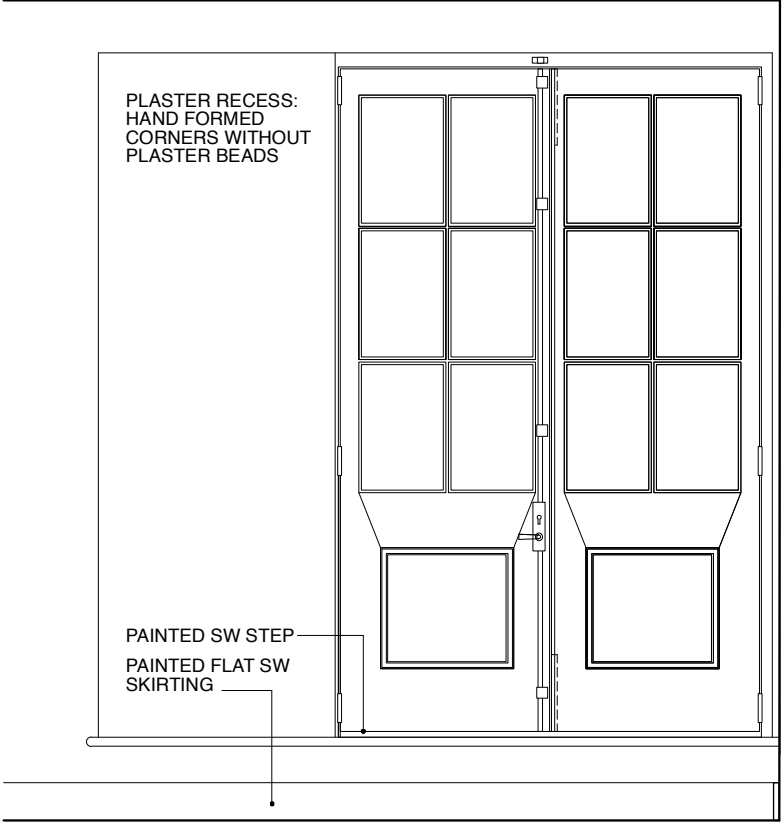
---

**NEW EXTERNAL GROUND FLOOR GLAZED DOORS: DG15  
GR07 / CO-P / 112 / A**

1:20/5 @ A3; 1:10/2.5 @ A1

*DO NOT SCALE FROM THIS DRAWING  
REFER ALL DISCREPANCIES TO ARCHITECT*

D305:  
THIRD FLOOR BALCONY  
INTERNAL ELEVATION



PLAN 1:20 @ A3

SPECIFICATION

**OPENING**  
EXTENDED OPENING WITH PAINTED RENDER REVEALS AND NEW PRECAST STONE SUBCILL FOR PAINT FINISH

**TIMBER & FINISH**  
ACCOYA MODIFIED SW FOR SITE HAND-PAINT FINISH IN DARK EGGSHELL

**JOINERY**  
NEW FRAME WITH HALF GLAZED AND INSULATED DOUBLE DOOR LEAVES

FRAME: REBATED EX 63 X 125  
LEAF: EX 63 X 100/75 STILES  
EX 63 X 100 HEAD RAIL  
EX 63 X 200 CROSS RAIL  
EX 63 X 200 BASE RAIL  
EX 25 X 63 GLAZING BARS  
12MM THICK PANELS WITH DENSE POLYSTYRENE INSULATION BETWEEN  
PROFILED DRIP BAR WITH DRIP TO BOTTOM EDGE



NOTES

TO BE READ IN CONJUNCTION WITH 1:50 PLANS AND ELEVATIONS  
CONTRACTOR TO PROVIDE SHOP DRAWINGS & IRONMONGERY SAMPLES FOR APPROVAL BY ARCHITECT  
CONTRACTOR TO PROVIDE PAINT SAMPLES FOR APPROVAL BY ARCHITECT

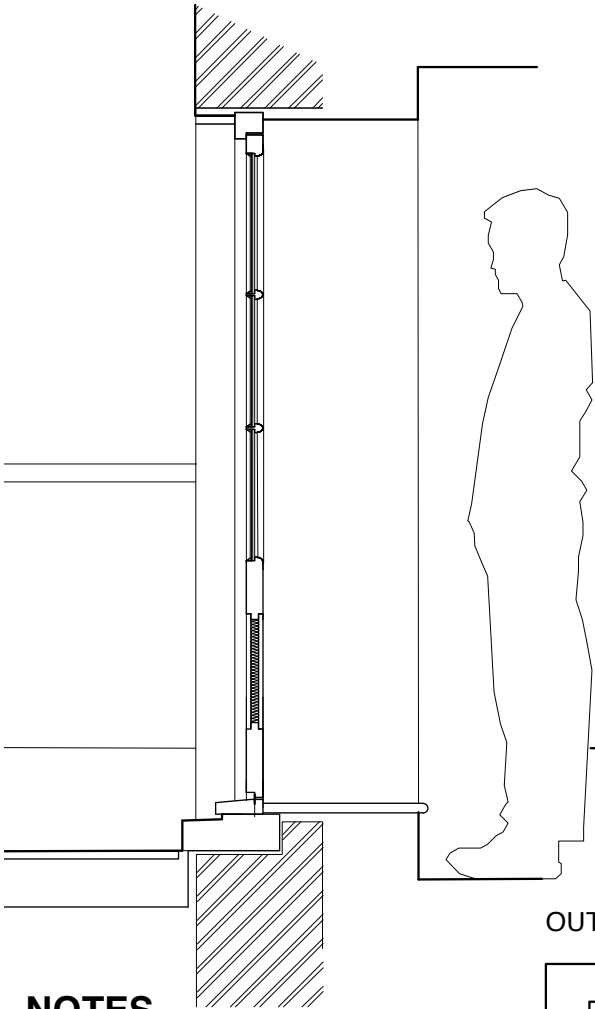
**MOULDINGS**  
PLASTER REVEALS WITHIN RECESS

**GLAZING**  
SLIMLITE OR SIMILAR DOUBLE GLAZED UNIT COMPRISING 3-4-4 TOUGHENED GLASS WITHOUT KITEMARK, BUTYL PUTTY FIXED

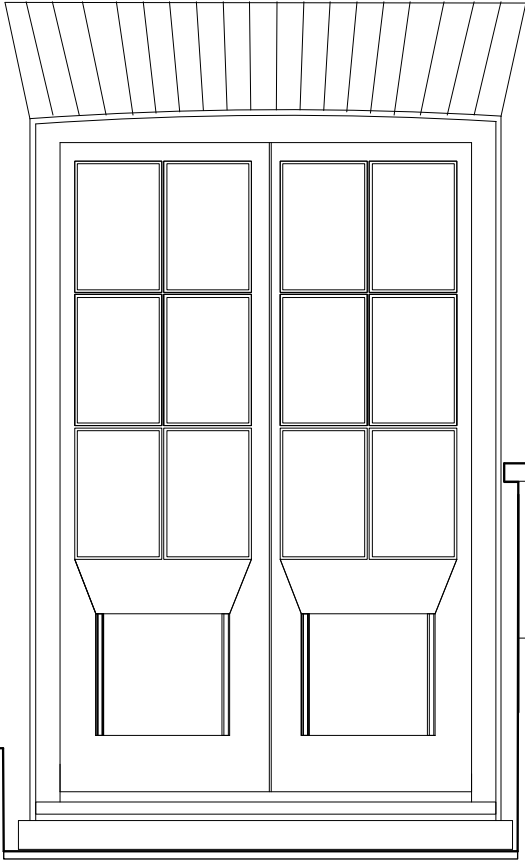
**DRAFT PROOFING**  
PUSH FIT BLACK RUBBER DRAFT PROOFING  
BRASS WEATHER BAR TO FOOT

**IRONMONGERY**  
SOLID DRAWN BRASS BUTT HINGES: NO TO SUIT, FRANK ALLART ESPAGNOLETTE/ CREMONE BOLT SET COMPRISING ROD GUIDES, FRAME FIXINGS, LEVER, 5-LEVER LOCKING OPTION WITH KEY, AND ROD SIZE TO SUIT, PBU FINISH (POLISHED UNLACQUERED BRASS)  
LEVER ACTION FLUSH BOLTS TO NON-LEADING LEAF EDGE (2 NO. 203 X 19MM)

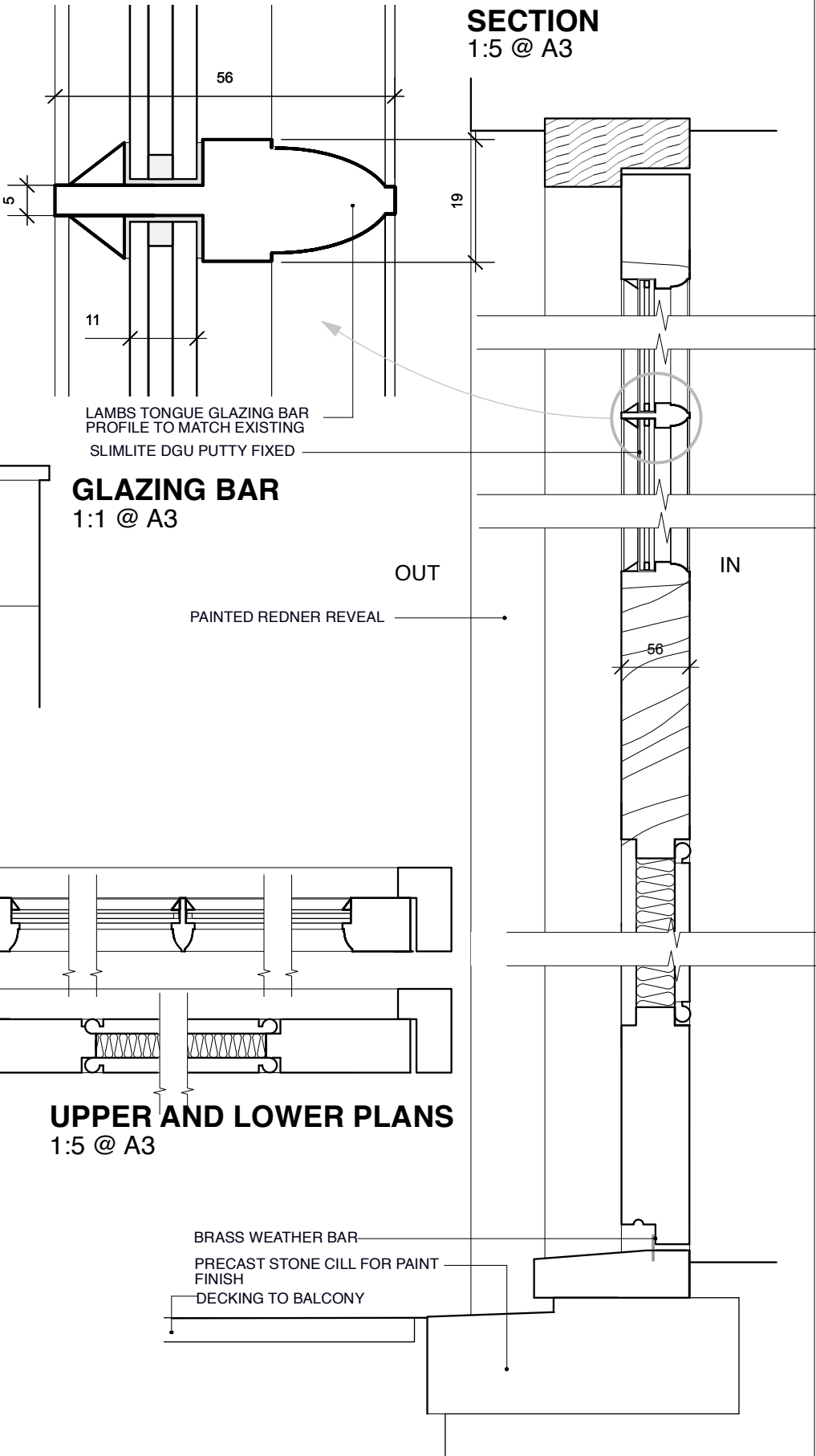
SECTION



EXTERNAL ELEVATION  
1:20 @ A3



SECTION  
1:5 @ A3



OUT

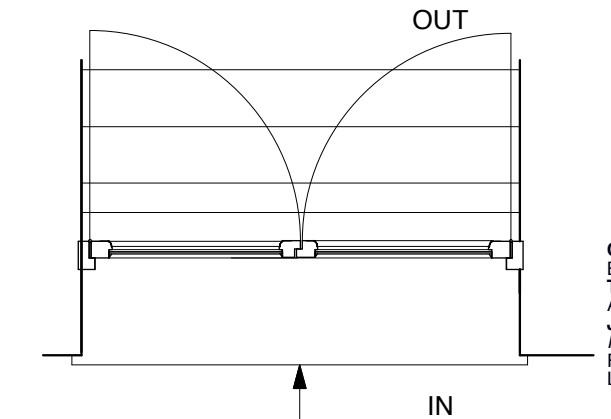
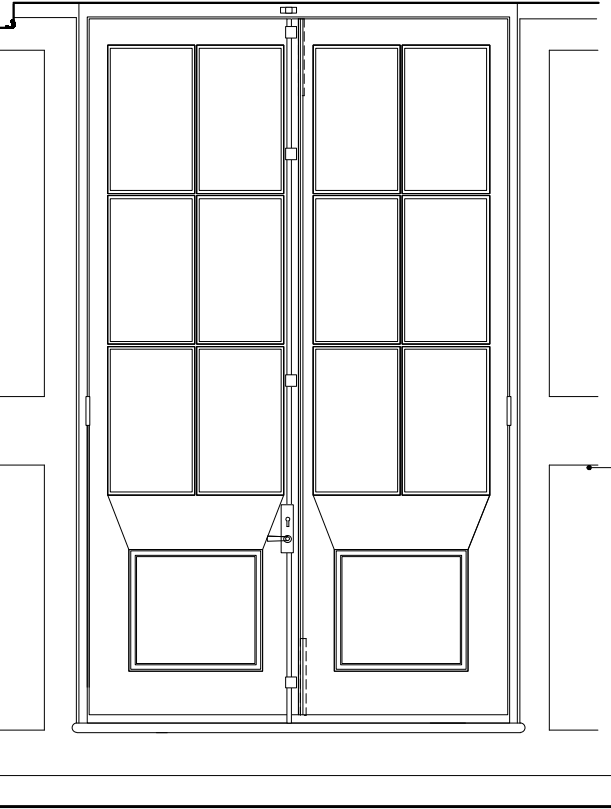
IN

UPPER AND LOWER PLANS  
1:5 @ A3



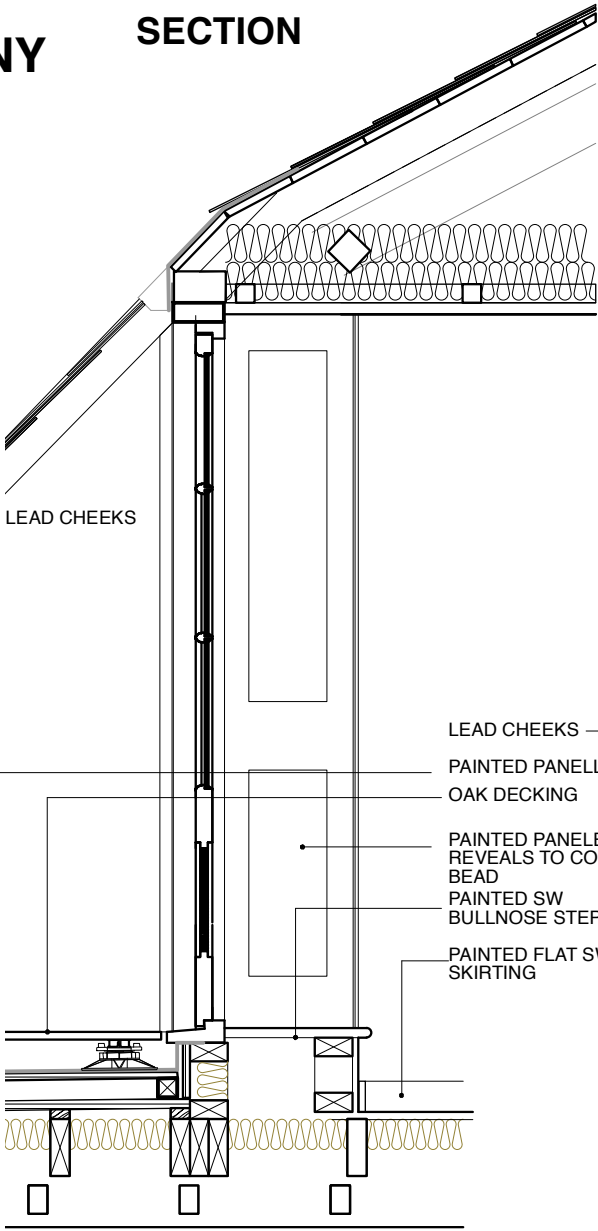
D310:  
THIRD FLOOR BOW BALCONY

INTERNAL ELEVATION

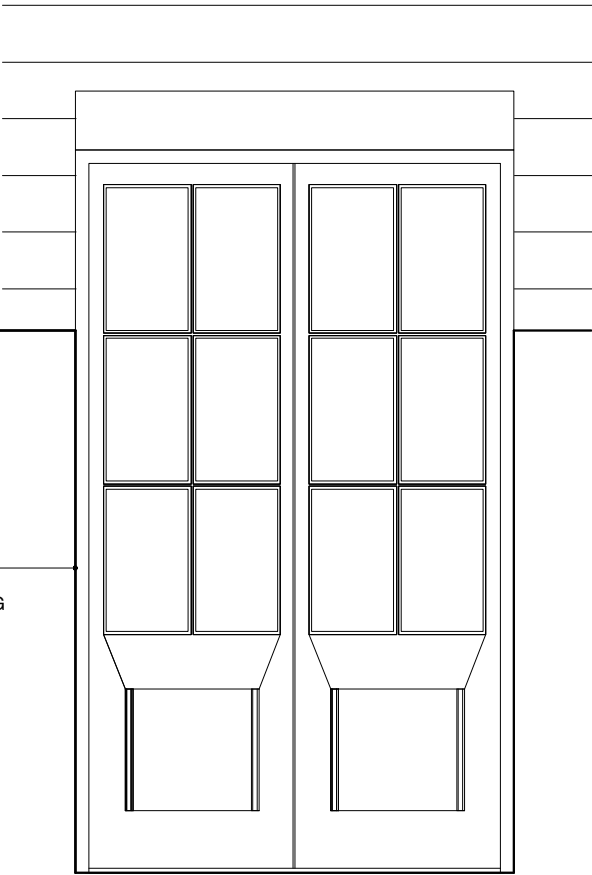


PLAN 1:20 @ A3

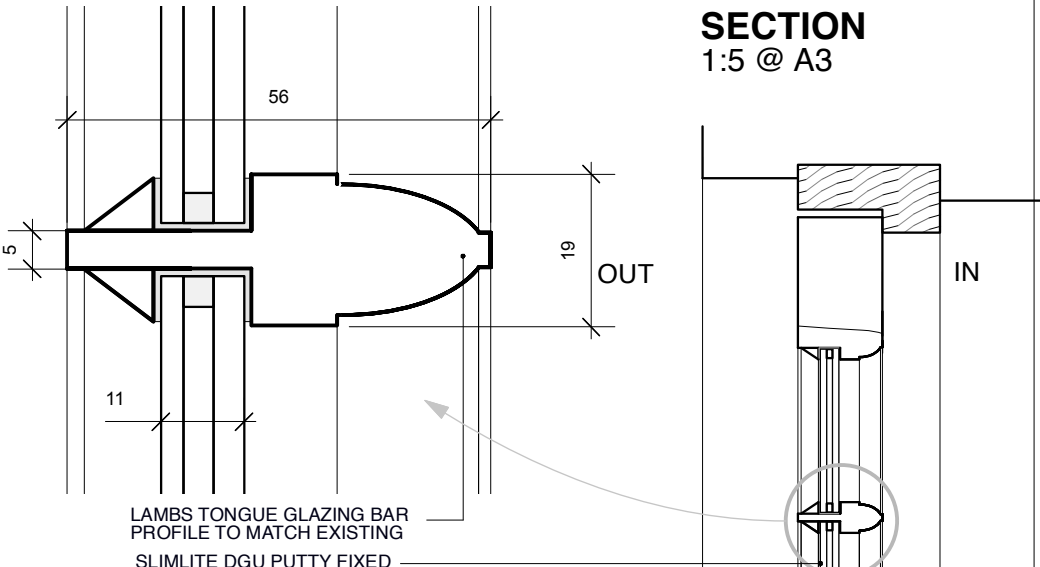
SECTION



EXTERNAL ELEVATION  
1:20 @ A3



SECTION  
1:5 @ A3



GLAZING BAR  
1:1 @ A3

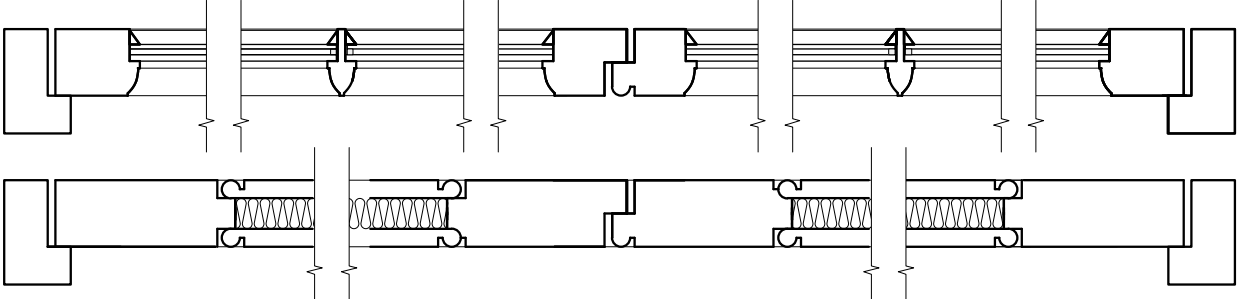
NOTES

TO BE READ IN CONJUNCTION WITH 1:50  
PLANS AND ELEVATIONS  
CONTRACTOR TO PROVIDE SHOP  
DRAWINGS & IRONMONGERY SAMPLES  
FOR APPROVAL BY ARCHITECT  
CONTRACTOR TO PROVIDE PAINT SAMPLES  
FOR APPROVAL BY ARCHITECT

SPECIFICATION

**OPENING**  
EXTENDED INVERTED DORMER OPENING WITH LEAD CLAD REVEALS  
**TIMBER & FINISH**  
ACCOYA MODIFIED SW FOR SITE HAND-PAINT FINISH IN DARK EGGSHELL  
**JOINERY**  
NEW FRAME WITH HALF GLAZED AND INSULATED DOUBLE DOOR LEAVES  
FRAME: REBATED EX 50 X 100  
LEAF: EX 63 X 100/75 STILES  
EX 63 X 100 HEAD RAIL  
EX 63 X 200 CROSS RAIL  
EX 63 X 200 BASE RAIL  
EX 25 X 63 GLAZING BARS  
12MM THICK PANELS WITH DENSE POLYSTYRENE INSULATION  
BETWEEN  
**MOULDINGS**  
PLASTER REVEALS WITHIN RECESS  
**GLAZING**  
SLIMLITE OR SIMILAR DOUBLE GLAZED UNIT COMPRISING 3-4-4 TOUGHENED  
GLASS WITHOUT KITEMARK, BUTYL PUTTY FIXED

OUT



IN

UPPER AND LOWER PLANS  
1:5 @ A3

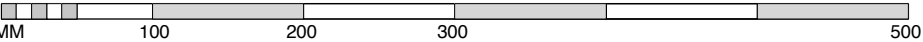


**DRAFT PROOFING**  
PUSH FIT BLACK RUBBER DRAFT PROOFING  
BRASS WEATHER BAR TO FOOT  
**IRONMONGERY**  
SOLID DRAWN BRASS BUTT HINGES: NO TO SUIT,  
FRANK ALLART ESPAGNOLETTE/ CREMONE BOLT SET COMPRISING ROD GUIDES, FRAME FIXINGS, LEVER,  
5-LEVER LOCKING OPTION WITH KEY, AND ROD SIZE TO SUIT, PBU FINISH (POLISHED UNLACQUERED  
BRASS)  
LEVER ACTION FLUSH BOLTS TO NON-LEADING LEAF EDGE (2 NO. 203 X 19MM)

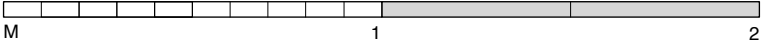
REVISIONS/ ISSUE

01/06/2023  
ISSUE TO **PLANNING**  
FOR DOC3: DETAIL  
21/12/2023 A  
ISSUE TO **PLANNING**  
FOR APPROVAL

1:5 @ A3



1:20 @ A3



7 THE GROVE, HIGHGATE, LONDON N6 6JU

NEW EXTERNAL THIRD FLOOR DOORS: D310

GRO7 / CO-P / 142 / A

1:20 / 5 @ A3; 1:10 / 2.5 @ A1

DO NOT SCALE FROM THIS DRAWING  
REFER ALL DISCREPANCIES TO ARCHITECT



# DB02

**GUEST KITCHEN/ LIVING/ DINING**  
ADAPT EXISTING DOOR LEAF IN ALTERED OPENING  
UPGRADE TO F300  
NEW IRONMONGERY  
PAINT FINISH

**GUEST KITCHEN/  
LIVING/  
DINING**  
SMALL OGEE ARCHITRAVES AND STAFF  
BEAD SKIRTING

**ENTRANCE HALL**

**GUEST KITCHEN/ LIVING/  
DINING**

**ENTRANCE HALL**

The top section shows two elevations of a door. The left elevation is a front view of a six-panel door with a small circle and a square symbol in the center. The right elevation is a side view of the same door, showing its profile and a small circle and a square symbol on the side. Below the left elevation is a section view of the door, showing its internal structure and a small circle and a square symbol. The bottom section shows a floor plan of a room with a red square indicating the location of the door. The room is labeled 'GUEST KITCHEN/ LIVING/ DINING' and 'ENTRANCE HALL'.

GUEST KITCHEN/  
LIVING/ DINING

SMALL OGEE ARCHITRAVES AND STAFF  
BEAD SKIRTING

ENTRANCE HALL

ENTRANCE HALL

GUEST KITCHEN/ LIVING/  
DINING

The image contains three architectural drawings. At the top left is a curved line representing an architrave. Below it is a detailed elevation of a door with two rectangular panels and two small circles representing knobs. To the right is another door elevation, similar but with a different knob placement and a label 'SMALL OGEE ARCHITRAVES AND FLAT SKIRTING' pointing to a detail. Below these are two floor plan sections. The left section shows a cross-section of a door threshold between an 'ENTRANCE HALL' and a 'GUEST BATHROOM'. The right section is a top-down view of a house plan with a red rectangle highlighting the location of the door in the entrance hall.

ENTRANCE HALL

SMALL OGEE ARCHITRAVES AND FLAT SKIRTING

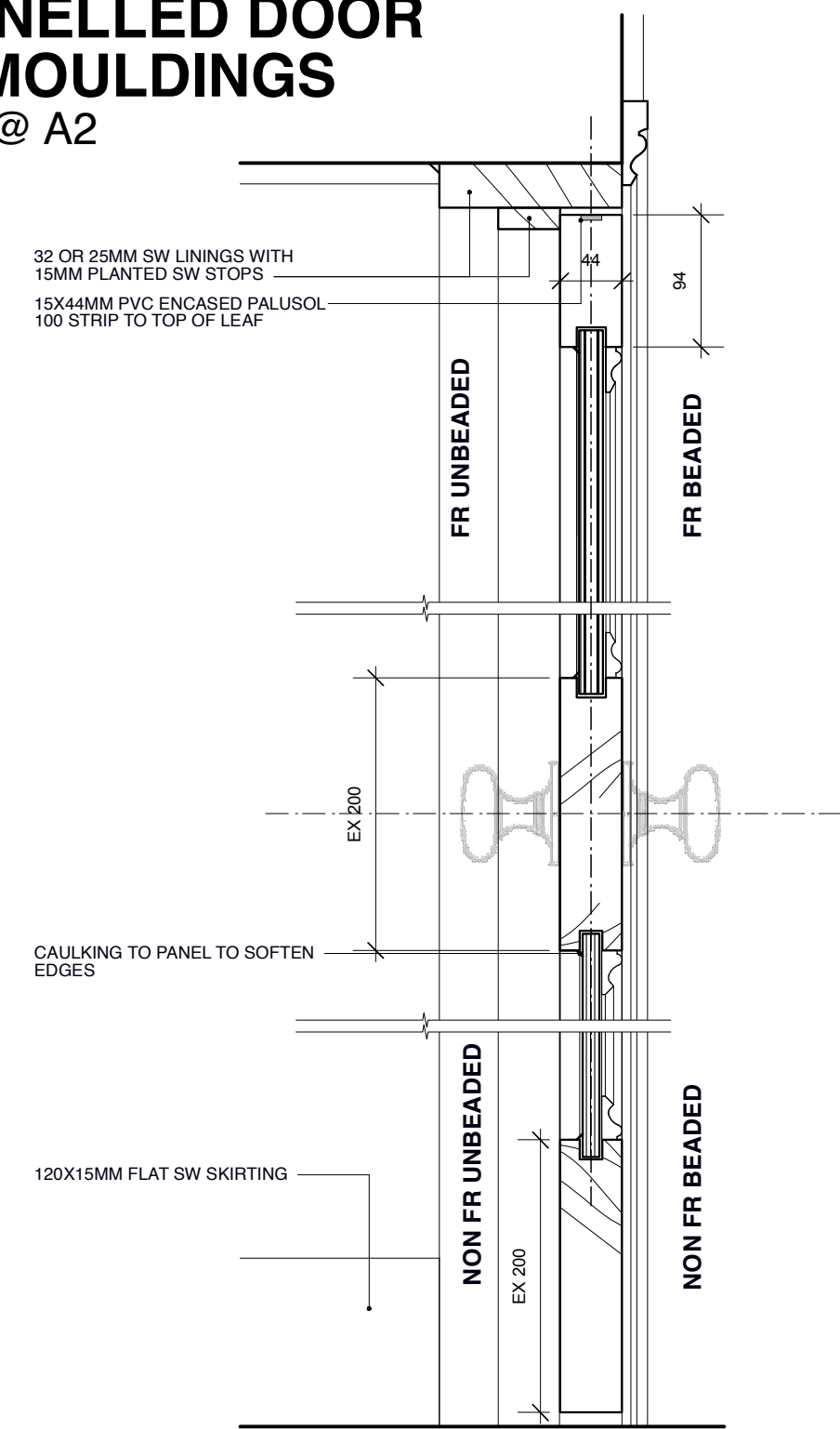
ENTRANCE HALL

GUEST BATHROOM

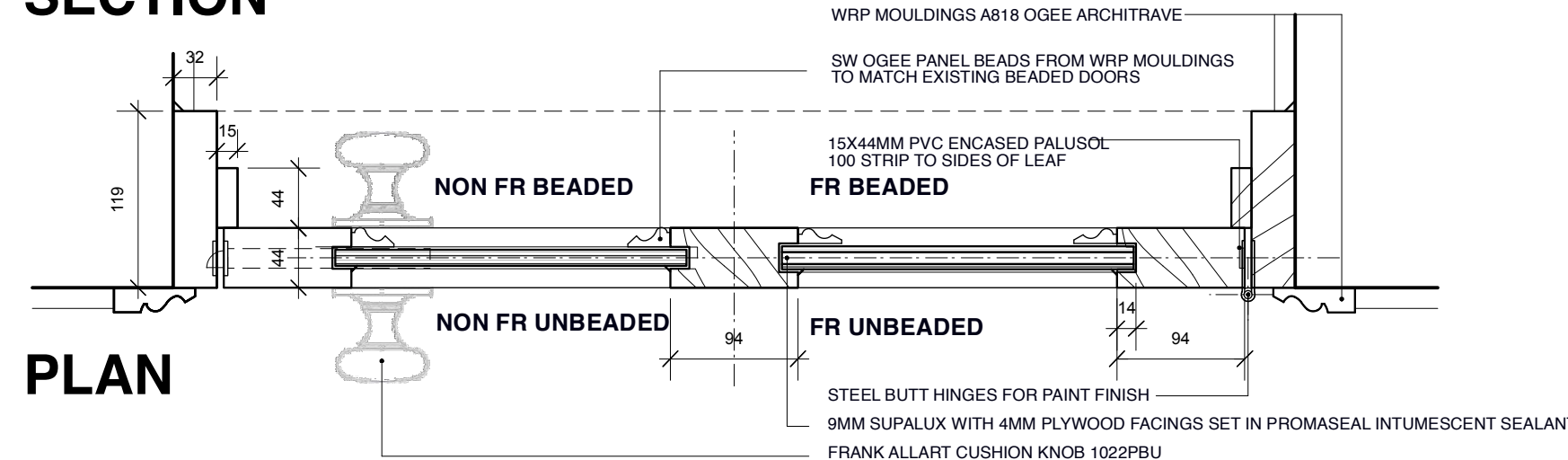
The architectural drawings include:

- Top Left:** A detailed elevation of the door from the TV room side. It features a four-panel design with a handle and lock on the left.
- Top Right:** A detailed elevation of the door from the passage side. It features a four-panel design with a handle and lock on the right.
- Bottom Left:** A cross-section diagram showing the door's profile and its relationship to the TV room and passage. An arrow points to the door's edge.
- Bottom Right:** A floor plan of the apartment showing the location of the door and passage. A red square highlights the door's location in the plan.

1:5 @ A2

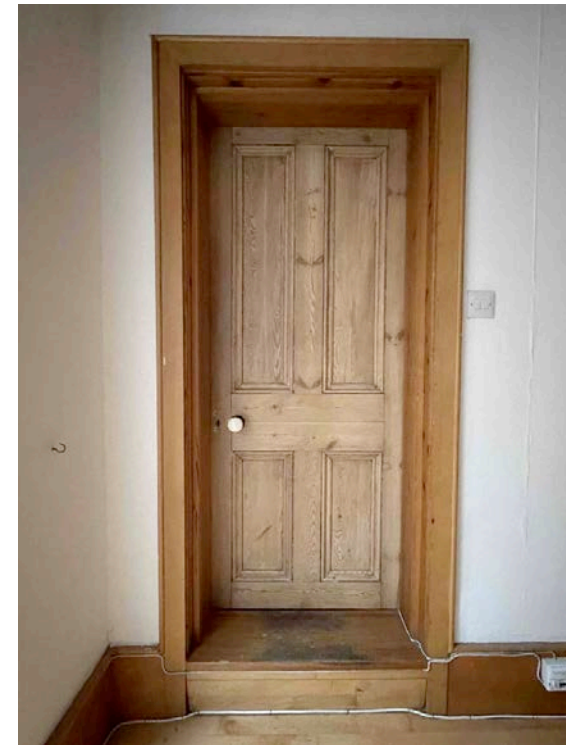


## PLAN



A collage of various metal hardware items. At the top left is a vertical door pull with two circular holes. To its right is a black metal safe with a keyhole and a circular dial. Below the pull are two keys, one with a circular head and one with a notched head. To the right of the keys is a metal hinge. Below the hinge is a large, polished brass door knob. To the right of the knob is a polished brass door handle. At the bottom center is a complex metal lock mechanism with a keyhole and a circular dial. To the right of the lock is a small metal piece with the text "ENGAGED" and "VACANT" on it.

## FOR RETENTION/ RE-USE

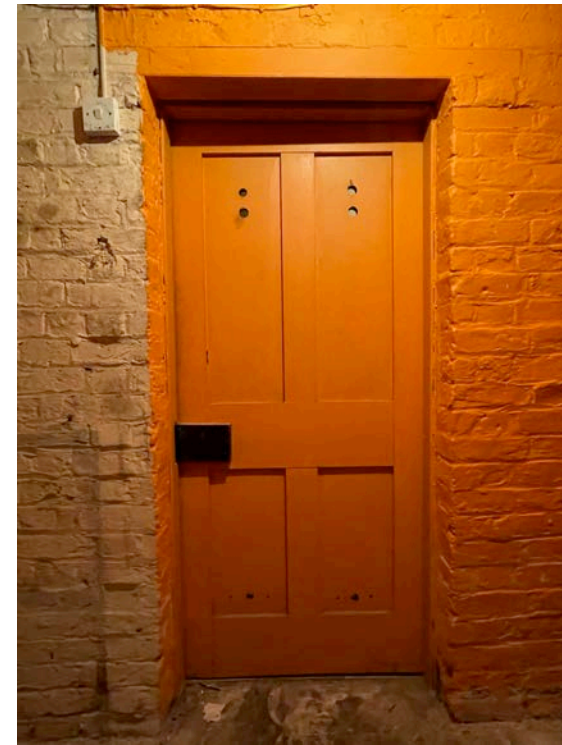


## DB02

TYPICAL DOOR FOR RE-USE



**DB09**  
BACK STAIR



**DB11**  
WINE CELLAR



**DB12**  
**PASSAGE**

**Lisa Shell**  
architects  
15000 Phoenix Way, Suite 100, Fort Lauderdale, FL 33307  
T. 954.586.9221 E. [lisashell@lisashellarchitects.com](mailto:lisashell@lisashellarchitects.com)  
[www.lisashellarchitects.co.uk](http://www.lisashellarchitects.co.uk)  
lisashell@lisashellarchitects.com E. lisashell@lisashellarchitects.com  
lisashellarchitects.com T. 954.586.9221

7 THE GROVE, HIGHGATE  
LONDON N6 6JU

**NEW & ALTERED INTERNAL  
BASEMENT DOORS SHEET 1  
GRO7 / CO-P / 201/ A**

1:20/5 @ A1; 1:10/2.5 @ DE  
DO NOT SCALE FROM THIS DRAWING  
REFER ALL DISCREPANCIES TO ARCHITECT

## REVISIONS/ ISSUE

01/06/2023  
ISSUE TO PLANNING  
FOR DOC3: DETAIL

21/12/2023 A  
ISSUE TO PLANNING  
FOR APPROVAL









NEW & ALTERED INTERNAL FIRST FLOOR DOORS

PLAN

LOCATION

ELEVATION

D102

DRESSING ROOM & BATHROOM

RE-USE EXISTING BEADED 4-PANELLED DOOR LEAF D102  
UPGRADE TO FD30  
IN EXISTING OPENING  
EXISTING LININGS AND STOPS  
NEW IRONMONGERY  
PAINT FINISH

DRESSING ROOM

LANDING

DRESSING ROOM

LANDING

DRESSING ROOM

DRESSING ROOM

LANDING

DRESSING ROOM

D104

BEDROOM 1

NEW BEADED PANELLED DOUBLE DOORS IN NEW OPENING  
BEADS TO MATCH EXISTING  
NON FR  
REBATED MEETING STILES  
NEW LININGS, STOPS AND ARCHITRAVES TO MATCH EXISTING  
PARLIAMENT HINGES  
FLUSH RING HANDLES

MASTER BATHROOM

MASTER BEDROOM

MASTER BATHROOM

MASTER BATHROOM

MASTER BEDROOM

MASTER BATHROOM

D313

SHOWER ROOM

NEW PANELLED & FLUSH GIB DOOR

SHOWER ROOM

BEDROOM 4

BEDROOM 4

SHOWER ROOM

BEDROOM 4

SHOWER ROOM

D314

NW EAVES STORE

REUSE EXISTING BEDROOM 6 DOOR LEAF D308  
PANELLED DOOR  
UPGRADE TO FD30 FIRE RATING WITH  
ENVIROGRAF 88 ESMP/FC CLOTH WITH  
PROTECTIVE FIRE CARD

SW PANELS/ LININGS

8MM Ø BEADS TO LININGS

SW PANELS/ LININGS

8MM Ø BEADS TO LININGS

SW PANELS/ LININGS

8MM Ø BEADS TO LININGS

NEW & ALTERED INTERNAL THIRD FLOOR DOORS

PLAN

LOCATION

ELEVATION

D303

BEDROOM 4

NEW UNBEADED 4-PANELLED DOOR LEAF WITH SUPALUX SANDWICH TO  
ACHIEVE FD30  
IN NEW OPENING  
NEW LININGS AND STOPS  
NEW IRONMONGERY  
PAINT FINISH  
REF DETAIL ON DRAWING GR07/CO-P/201

BEDROOM 4

LANDING

BEDROOM 4

LANDING

BEDROOM 4

BEDROOM 4

LANDING

BEDROOM 4

D306

BEDROOM 5

NEW UNBEADED 4-PANELLED DOOR LEAF WITH SUPALUX SANDWICH TO  
ACHIEVE FD30  
IN NEW OPENING  
NEW LININGS AND STOPS  
NEW IRONMONGERY  
PAINT FINISH  
REF DETAIL ON DRAWING GR07/CO-P/201

BEDROOM 5

LANDING

BEDROOM 5

LANDING

BEDROOM 5

BEDROOM 5

LANDING

BEDROOM 5

D307

BATHROOM

RE-USE EXISTING UNBEADED 4-PANELLED DOOR LEAF D301  
IN NEW OPENING  
NEW LININGS AND STOPS  
NEW IRONMONGERY  
PAINT FINISH

BATHROOM

LANDING

BATHROOM

LANDING

BATHROOM

BATHROOM

LANDING

BATHROOM

D309

OFFICE/ BEDROOM 6

NEW UNBEADED 4-PANELLED DOOR LEAF WITH SUPALUX SANDWICH TO  
ACHIEVE FD30  
IN NEW OPENING  
NEW LININGS AND STOPS  
NEW IRONMONGERY  
PAINT FINISH  
REF DETAIL ON DRAWING GR07/CO-P/201

OFFICE/ BEDROOM 6

LANDING

OFFICE/ BEDROOM 6

LANDING

OFFICE/ BEDROOM 6

OFFICE/ BEDROOM 6

LANDING

OFFICE/ BEDROOM 6

D312

SHOWER ROOM

RE-USE EXISTING UNBEADED 4-PANELLED DOOR LEAF D308  
IN NEW OPENING  
NEW LININGS AND STOPS  
NEW IRONMONGERY  
PAINT FINISH

SHOWER ROOM

BEDROOM 4

SHOWER ROOM

BEDROOM 4

SHOWER ROOM

SHOWER ROOM

BEDROOM 4

SHOWER ROOM

Lisa Shell

architects

15000 Pinner Road, Pinner, Middlesex, HA5 2JL  
0208 399 4400  
www.lisashellarchitects.co.uk

7 THE GROVE, HIGHGATE,  
LONDON N6 6JU

NEW & ALTERED INTERNAL  
FIRST & THIRD FLOOR DOORS  
GR07 / CO-P / 221/ A

1:20/5 @ A1; 1:10/2.5 @ DE  
DO NOT SCALE FROM THIS DRAWING  
PREFER ALL DISCREPANCIES TO ARCHITECT

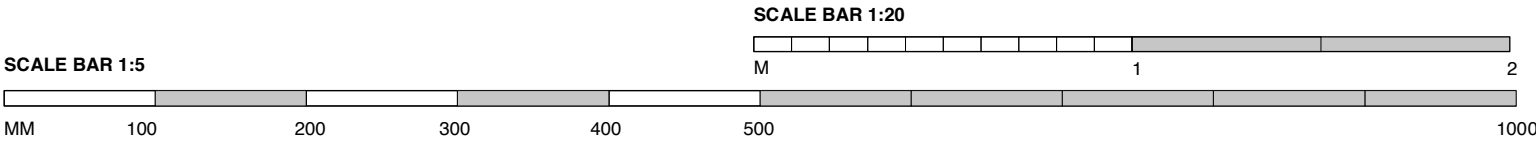
REVISIONS/ISSUE

01/06/2023  
ISSUE TO PLANNING  
FOR DOC3: DETAIL

21/12/2023 A  
ISSUE TO PLANNING  
FOR APPROVAL

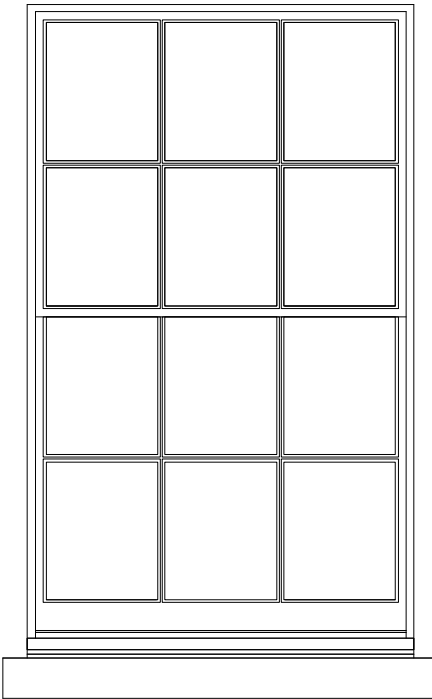
# EXTERNAL ELEVATIONS OF NEW WINDOWS

1:20 @ A2



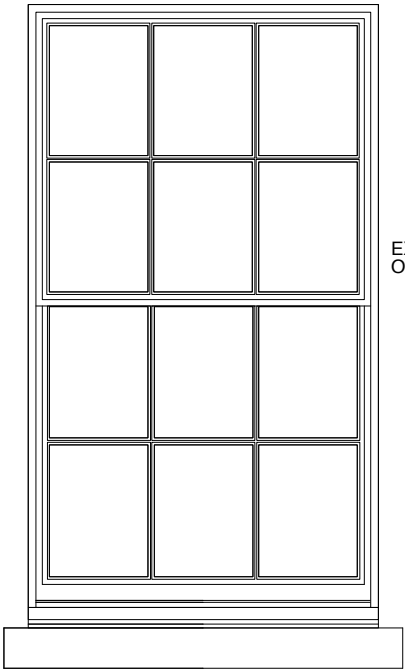
## BASEMENT

NEW OPENING, REUSE EXISTING LINTOLS & SUBCILLS



**WB08 WB01  
WB07**  
**FRONT ELEVATION**  
*GUEST KITCHEN LIVING DINING;  
GUEST BEDROOM*

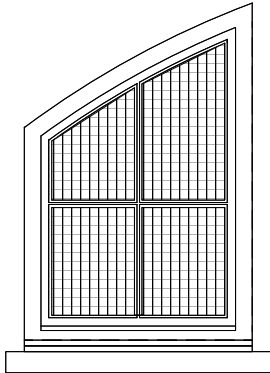
6/6 SLIDING SASH  
SINGLE GLAZING  
WITH INTERNAL SHUTTERS



**WB04  
WB05**  
**REAR ELEVATION**  
*DEN/ GYM*

6/6 SLIDING SASH  
SINGLE GLAZING  
NO SHUTTERS

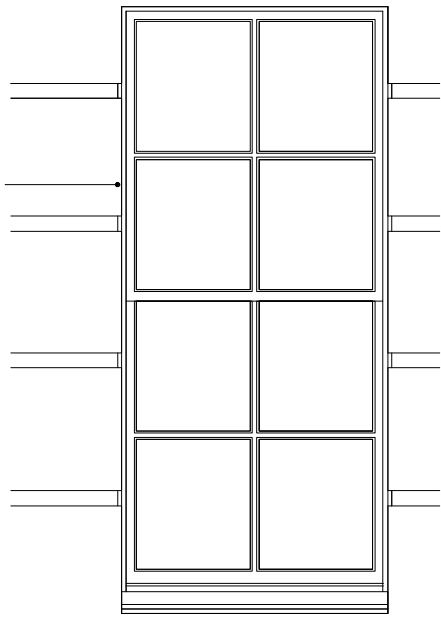
EXISTING OPENING



**WB06**  
**NORTH ELEVATION**  
*COLD STORE*

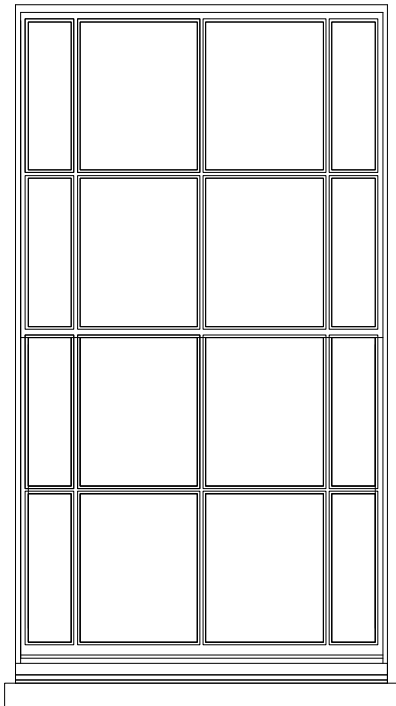
FIXED CASEMENT WINDOW  
WITH FLY MESH AS VENT  
WITH INTERNAL SLAB  
SHUTTER

## GROUND FLOOR



**WG01  
WG02**  
**FRONT ELEVATION**  
*PORCH*

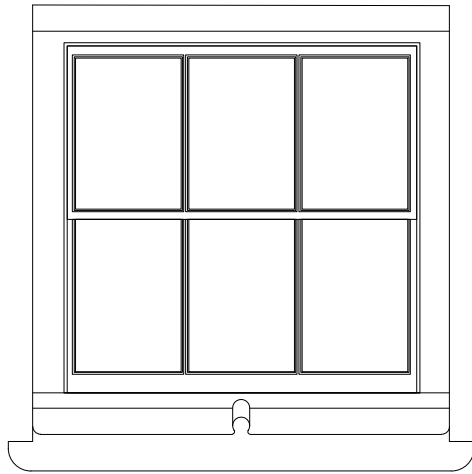
4/4 SLIDING SASH  
SINGLE GLAZING



**WG05**  
**REAR ELEVATION**  
*BOOT ROOM*

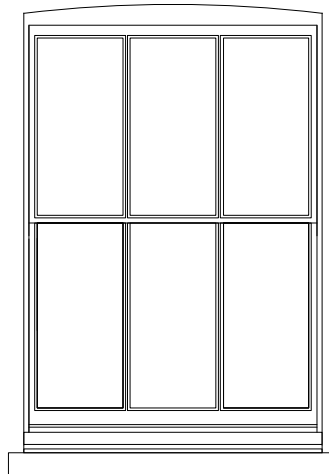
8/8 SLIDING SASH  
WITH MARGIN LIGHTS  
SINGLE GLAZING

## THIRD FLOOR



**W301  
W302  
W305  
W306**  
**FRONT & REAR ELEVATIONS**  
*OFFICE & BEDROOMS*

3/3 SLIDING SASH IN INVERTED  
DORMER  
SINGLE GLAZING



**W304**  
**SIDE ELEVATION**  
*BEDROOM 5*

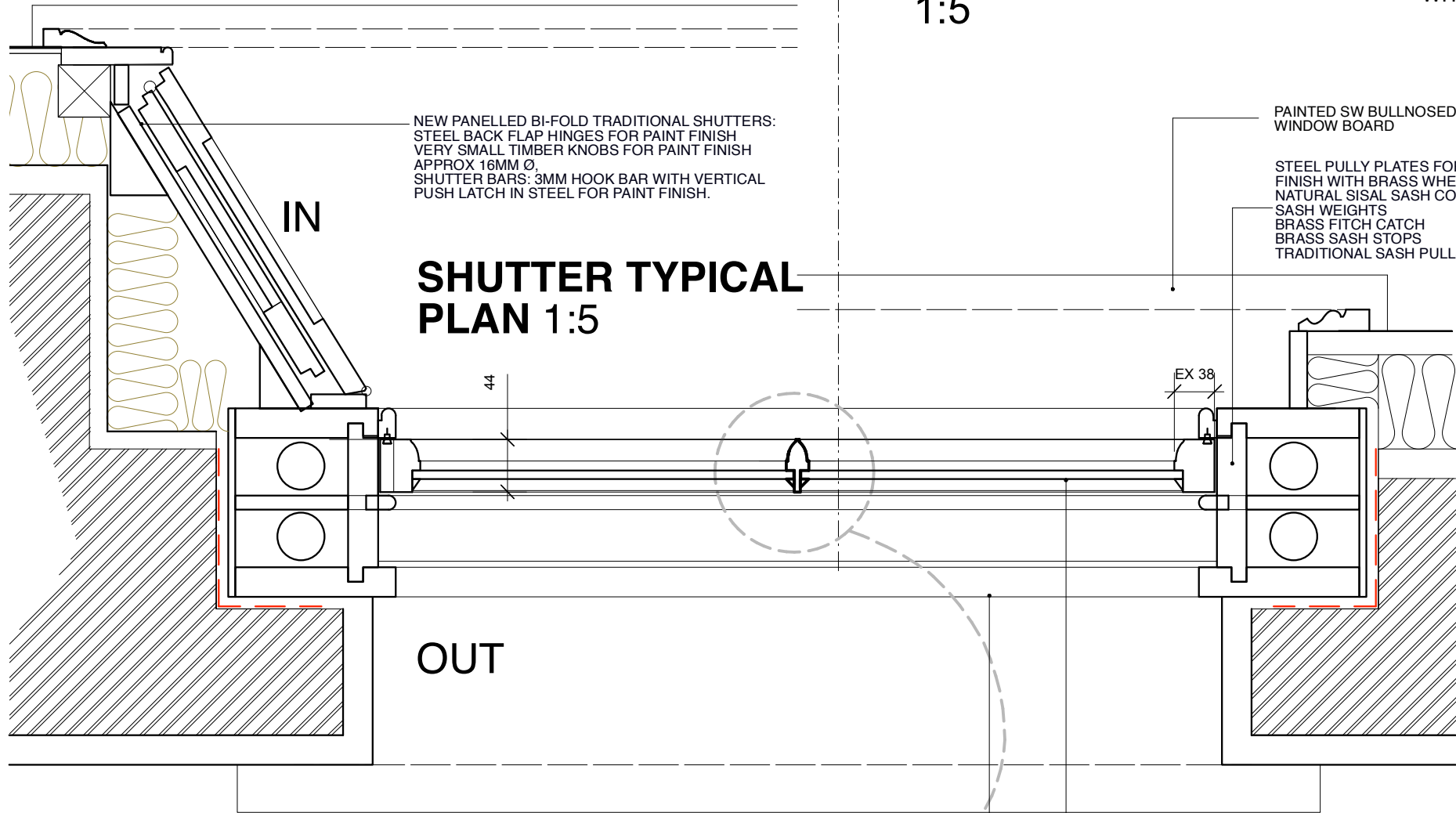
3/3 SLIDING SASH  
SINGLE GLAZING

# TYPICAL DETAILS OF NEW WINDOWS

1:1 0/5/1 @ A2

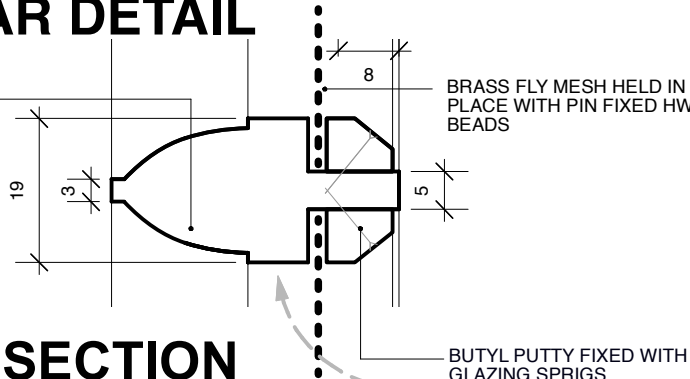
## SASH TYPICAL PLAN 1:5

## SASH TYPICAL SECTION 1:5 WITHOUT SHUTTER

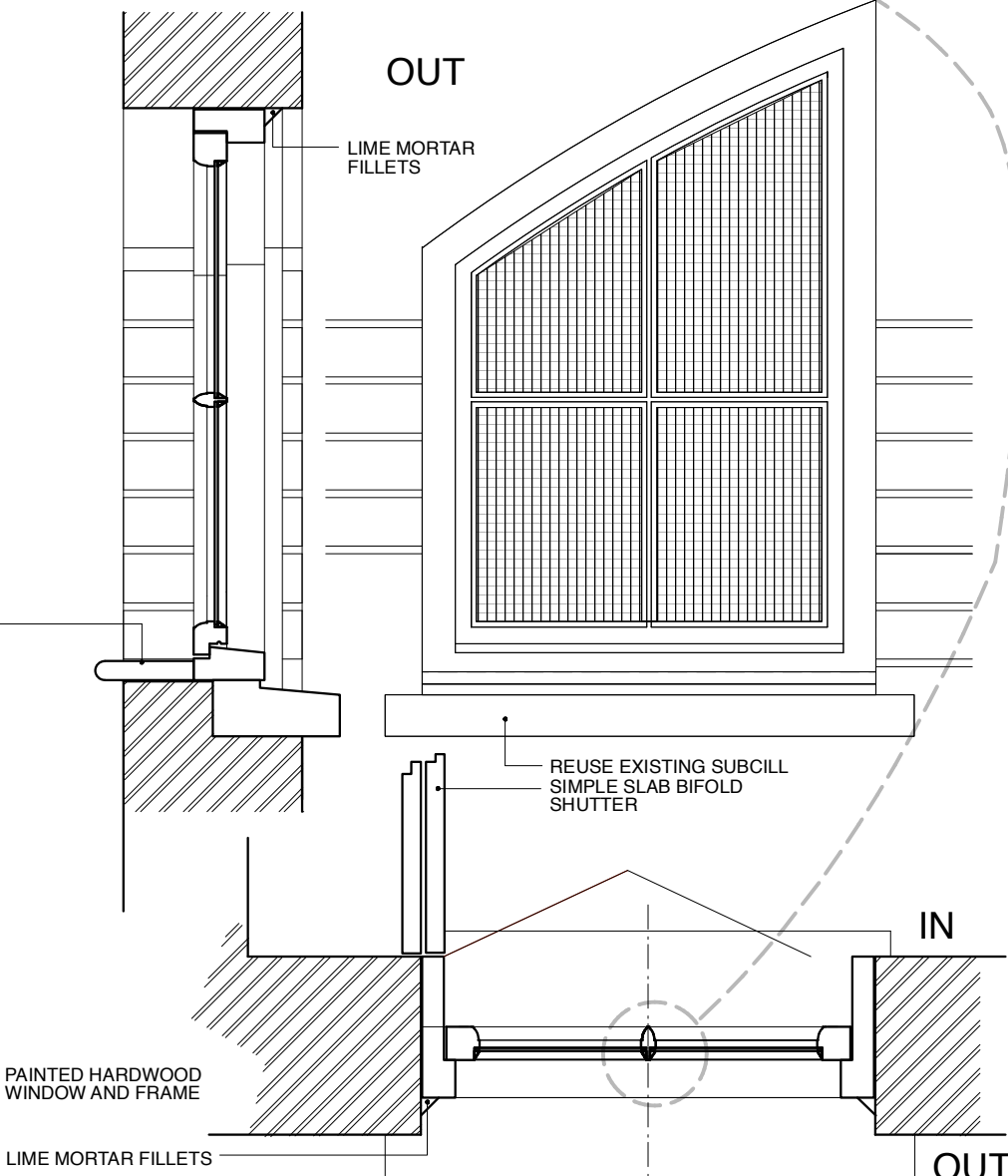


## GLAZING BAR DETAIL 1:1

GLAZING BAR TO DETAIL TO MATCH EXISTING



## CASEMENT SECTION 1:10



## CASEMENT PLAN 1:10

**Lisa Shell**  
architects

EG2 Norway Wharf, 24 Harford Road, N1 5QT  
T. 020 7275 7772 E. mail@lisashellarchitects.co.uk  
www.lisashellarchitects.co.uk  
Director Lisa Shell RIBA Registered in England No. 609928  
Representative Rose Adams, Director No. 61910, CMB, 659174F

7 THE GROVE, HIGHGATE,  
LONDON N6 6JU

NEW WINDOWS & SHUTTERS

GRO7 / COP / 301 / A

1:1/5/20 @ A2  
REFER ALL DISCREPANCIES TO ARCHITECT

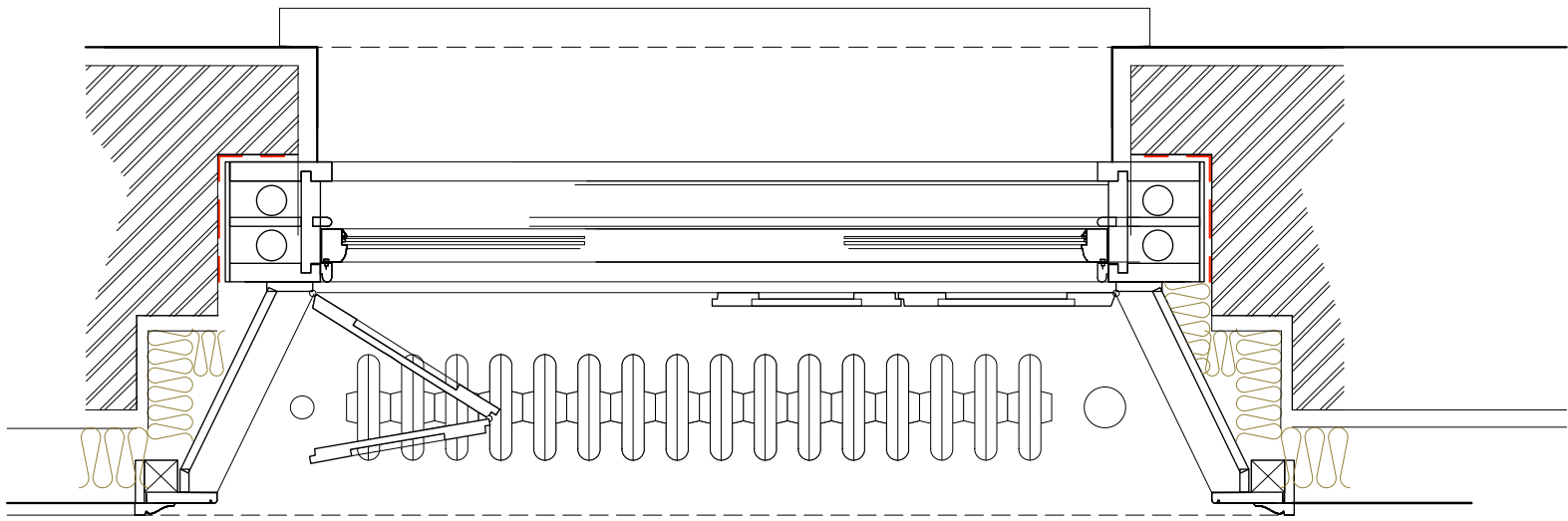
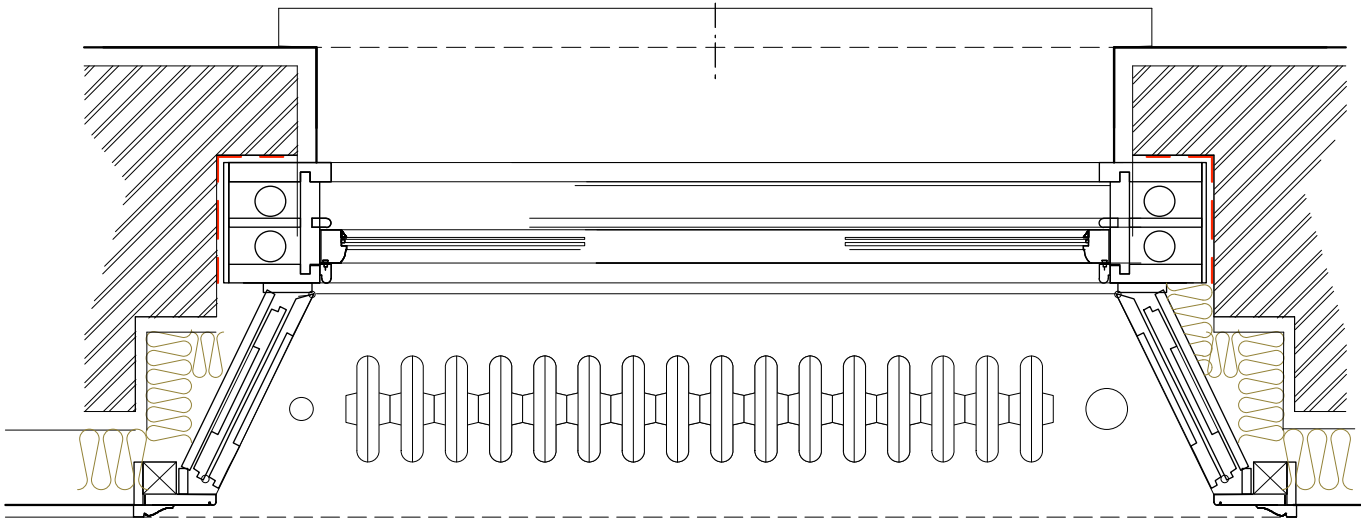
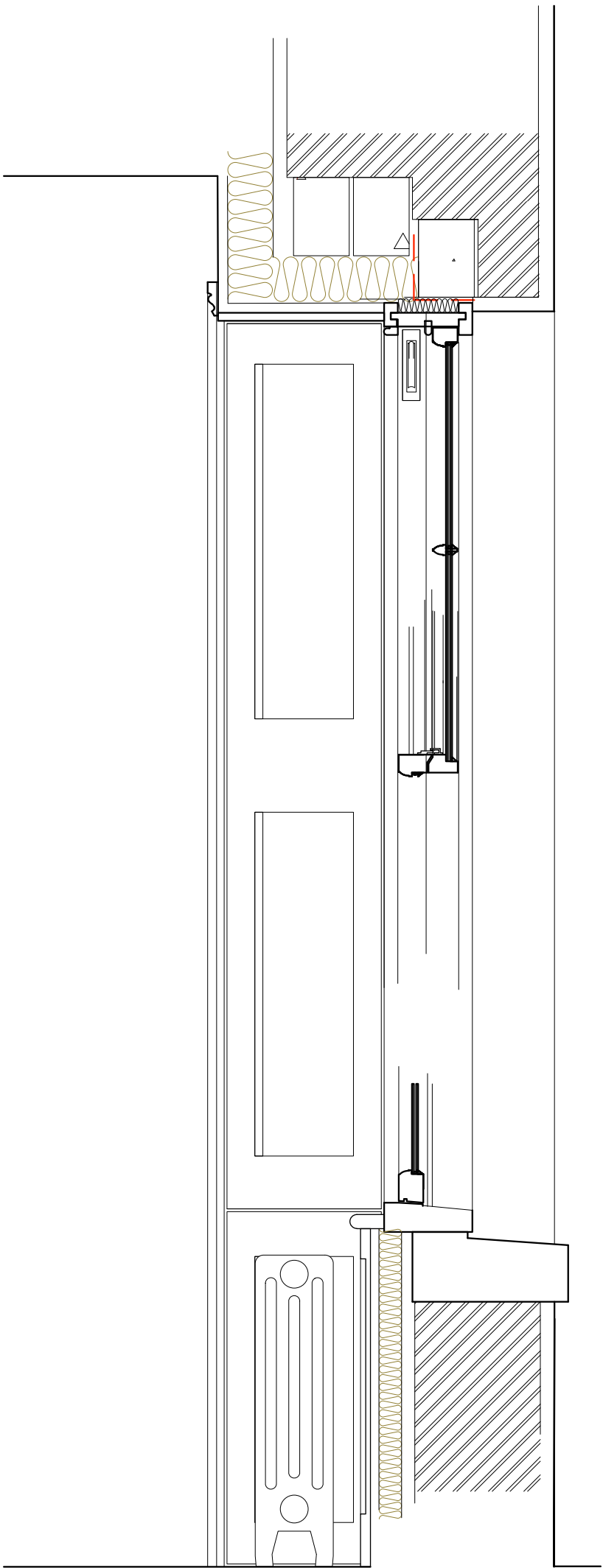
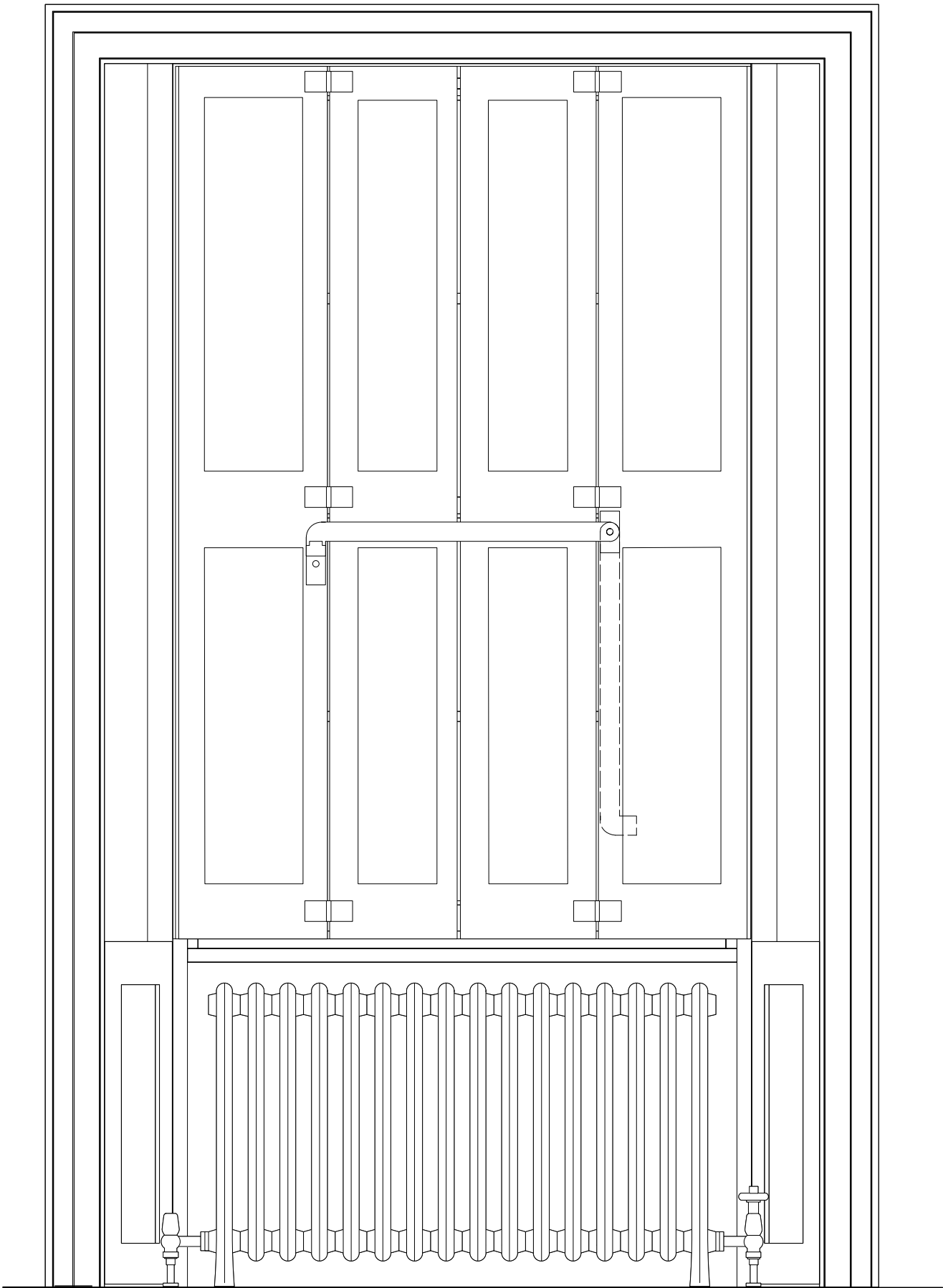
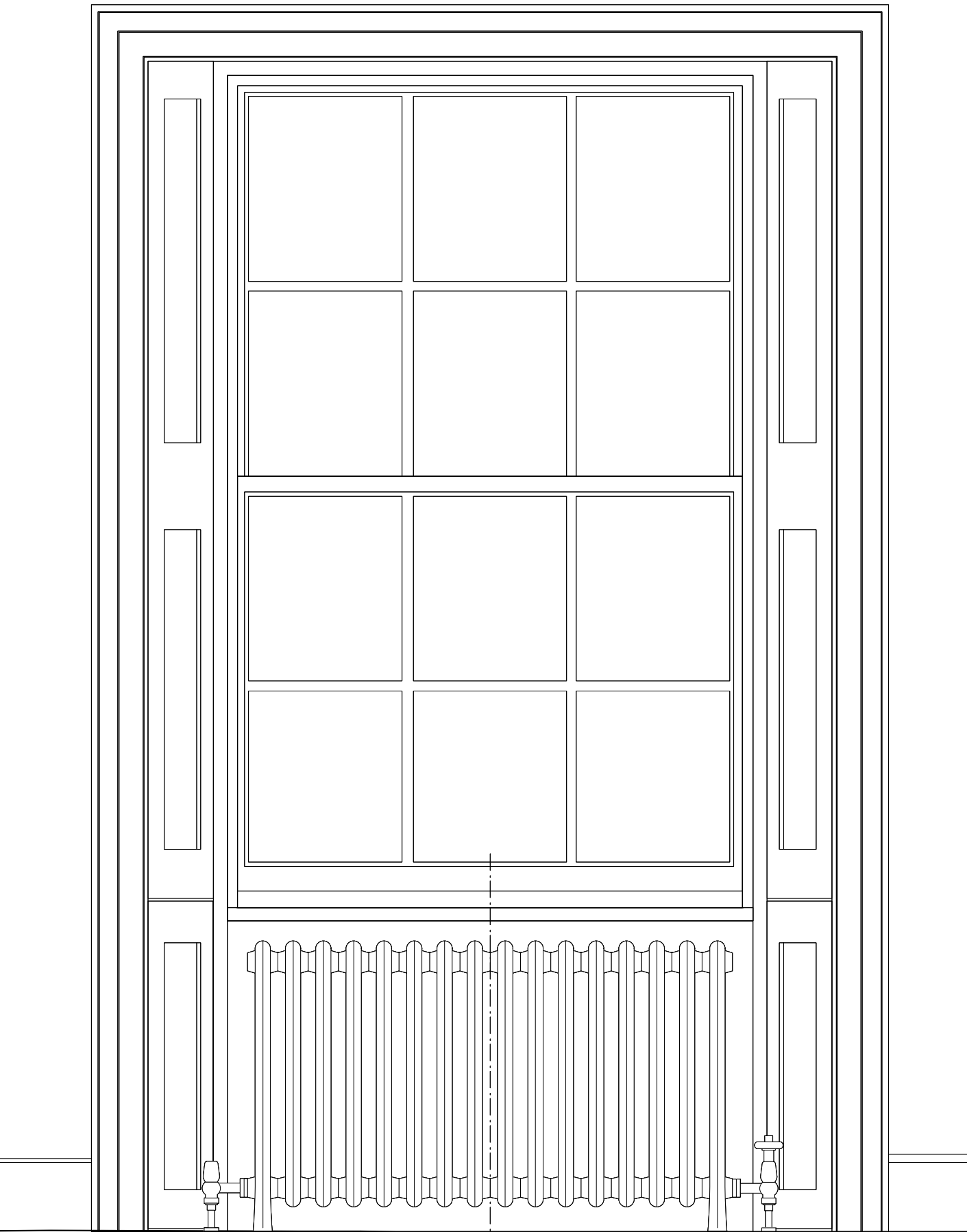
REVISIONS/ ISSUE

01/06/2023  
ISSUE TO PLANNING  
FOR DOC3: DETAIL

21/12/2023 A  
ISSUE TO PLANNING  
FOR APPROVAL



SASH & SHUTTER  
TYPICAL ELEVATIONS & PLANS  
1:10



SASH & SHUTTER  
TYPICAL SECTION  
1:10

LOCATIONS

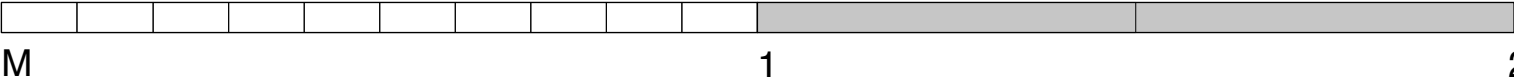
**WB01**  
GUEST BEDROOM  
NEW SASHES WITH SHUTTERS

**WB08**  
**WB07**  
GUEST KITCHEN LIVING DINING  
NEW SASHES WITH SHUTTERS

**WG03**  
STUDY  
EXISTING SASHES WITH NEW  
SHUTTERS

**W101**  
**W102**  
DRESSING ROOM & BATHROOM  
EXISTING FRENCH WINDOWS AND  
SHUTTER BOXES WITH  
REPLACEMENT SHUTTERS

SCALE BAR 1:10



ALL IN SW FOR PAINT FINISH; DETAIL TO MATCH ORIGINAL  
PAINTED STEEL SHUTTER HINGES AND SHUTTER BAR