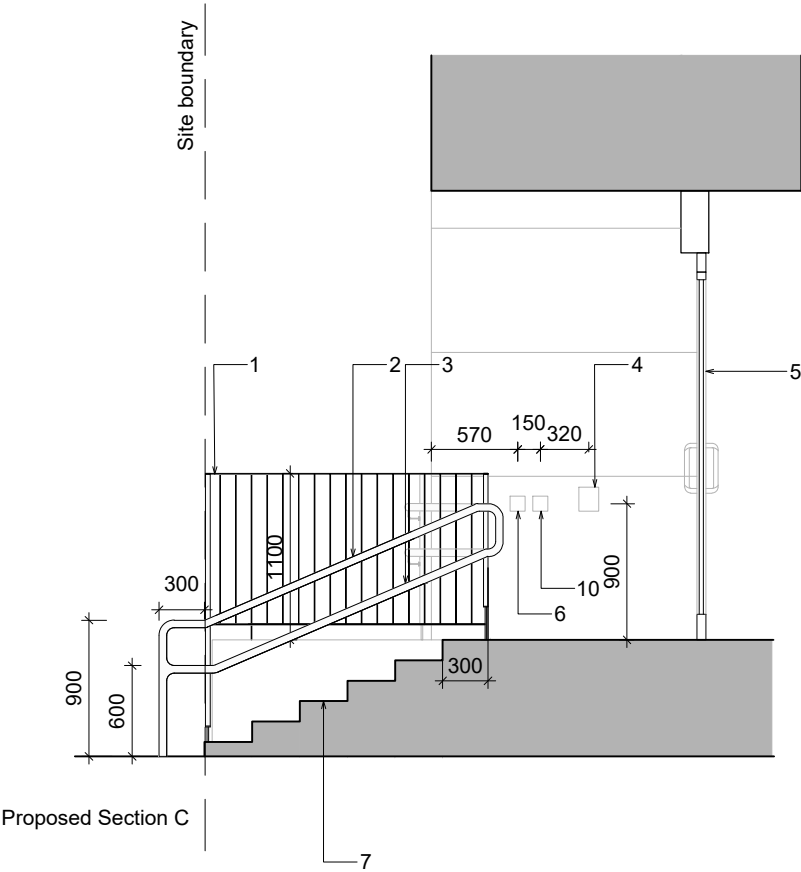
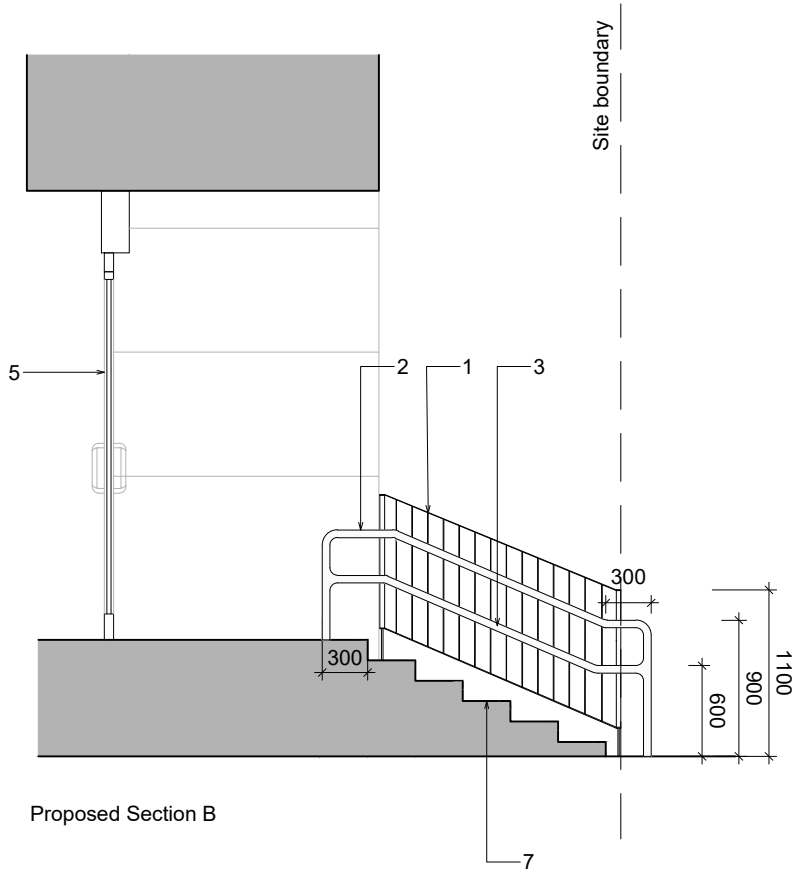


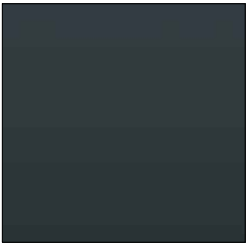
Key

- 1. 1100mm high balustrade from ramp floor and extended to ground floor flat top and bottom rails, PPC colour dark grey
- 2. 900mm high, PVC sleeved over galvanised steel tube with exterior diameter of 50mm, orange colour and led integrated lighting
- 3. 600mm high, PVC sleeved over galvanised steel tube with exterior diameter of 50mm, orange colour and led integrated lighting
- 4. New entry phone
- 5. New dual swinging door with manifestation, that requires no more than 30N to be opened or is automatic
- 6. New swipe card
- 7. Existing marble stairs to be made good, cleaned, new edgings with black inserts applied and re-instate black treads
- 8. New welded steel mesh PPC black to allow for basement ventilation
- 9. Existing concrete ramp clear width to be extended as far as possible to align with outer existing balustrade with resin bound gravel finish
- 10. New entry button



Material Finishes & Precedents

Balustrade



Colour: dark grey

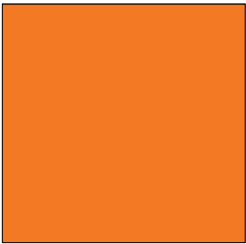


Balustrade precedent (not to include flat top handrail)



Welded steel mesh powder coated black

Handrail



Exterior colour: orange



LED integrated lighting



PVC sleeved over galvanised steel tube

Ramp and Landing



Resin bound solid surface to match marble colour



Resin bound solid surface colour to contrast with landings

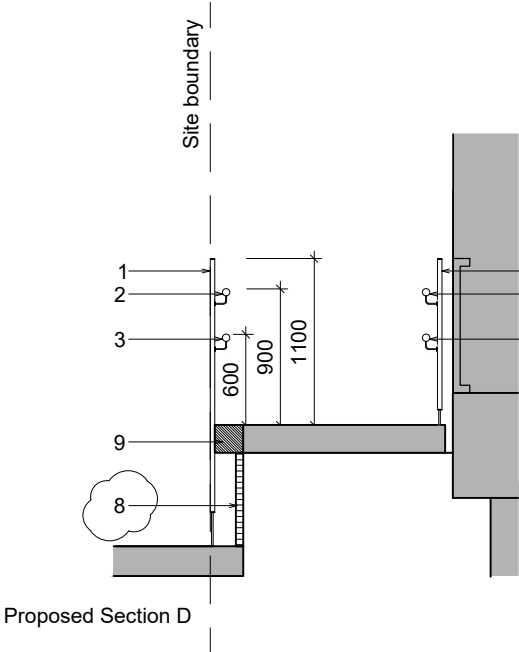
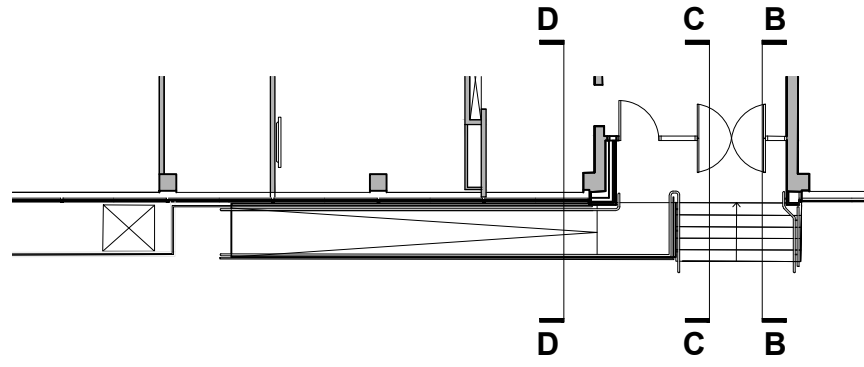
Stairs



Squared edge with black insert colour



Black tread



DRAWING NOTES

- 1. filename: Bidborough House Ramp Works - Proposed.dwg
- 2. Do not scale this drawing in either paper or digital form. Use figured dimensions only. Detailed site survey to be carried out to establish tolerances. Figured dimensions are in mm. All dimensions shall be verified on site before proceeding with the work. The architect shall be notified of any discrepancies.
- 3. This drawing has been produced for sole use on this project and is not intended for use by any other person or for any other purpose. © Copyright RSS (U.K.)
- 4. All printed copies should be made at 100% of the original page size. Use scale bars, where included, to check that the drawing has been printed to the intended scale as identified in the drawing title block.
- 5. This drawing is not intended for construction unless specifically described as such.

REVISIONS

REV	DATE	STATUS
PI2	12.12.23	For planning application
Changes since last issue:		
- Description of new welded steel mesh added below ramp (8)		



28 NAVIGATION ROAD LONDON E3 3TG
T : 020 7739 8945
E : rss@rssa.co.uk
www.rivingtonstreetstudio.co.uk

rivingtonstreetstudio

job title UCL Short Term Lease Exits

drawing title Bidborough House - Entrance Modification - Proposed Sections B, C & D

drawn by	job no.	suitability	revision	PROJECT	ORIGIN.	VOLUME	LEVEL	TYPE	ROLE	NUMBER
HS	1007-F	S4	PI2	STLE	RSS	00	00	DR	A	1205
scale	1:50 @ A3									