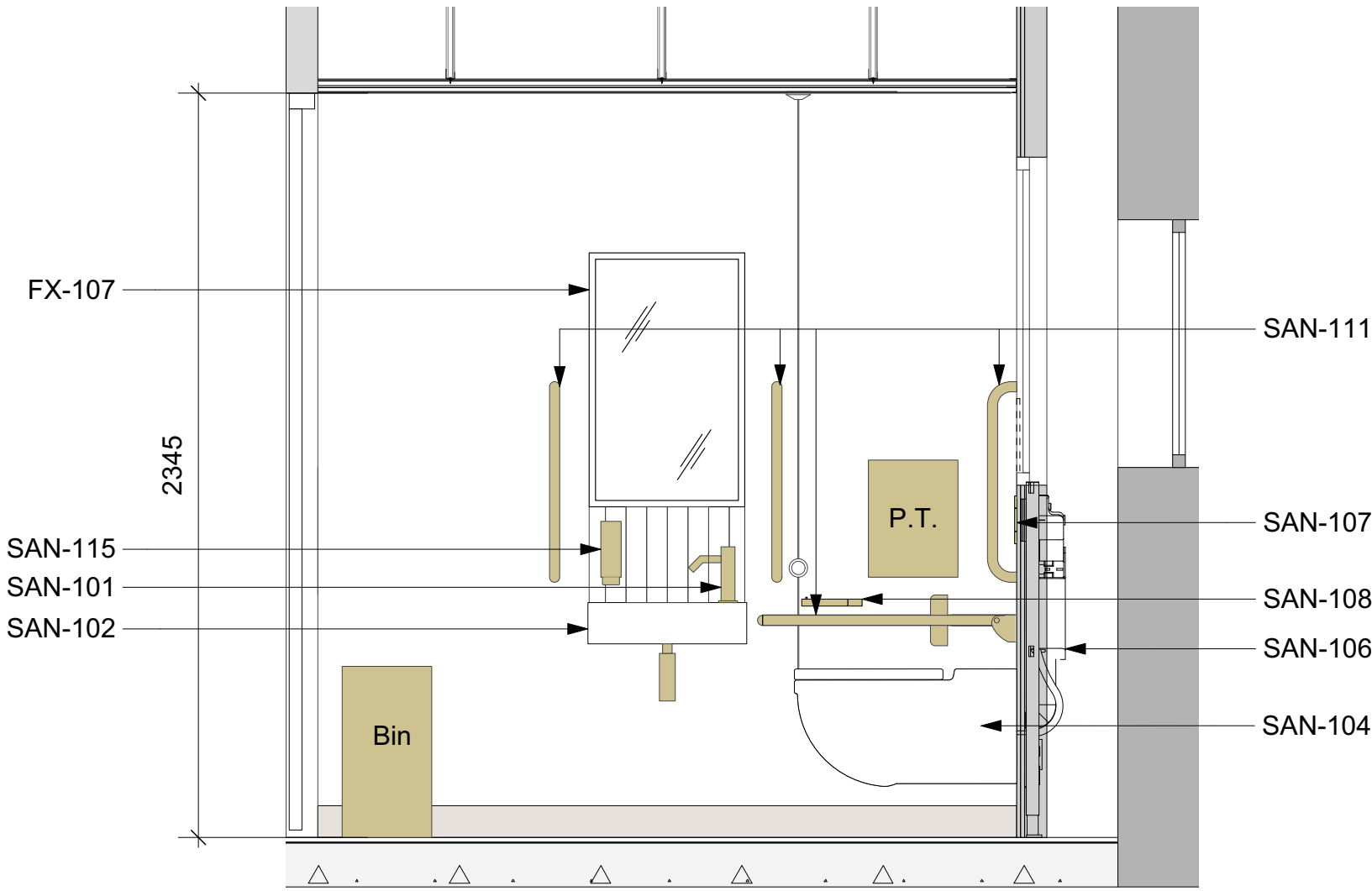
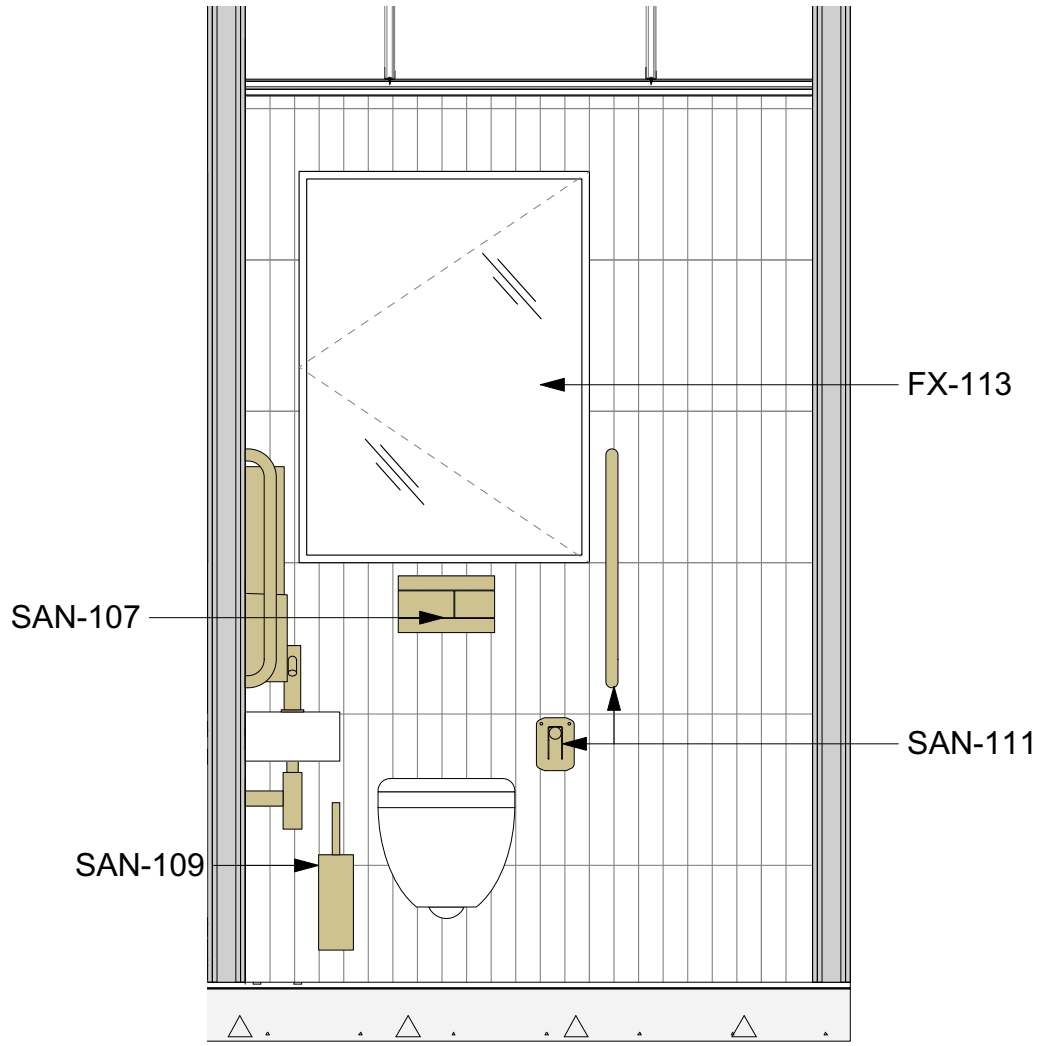


PLANNING

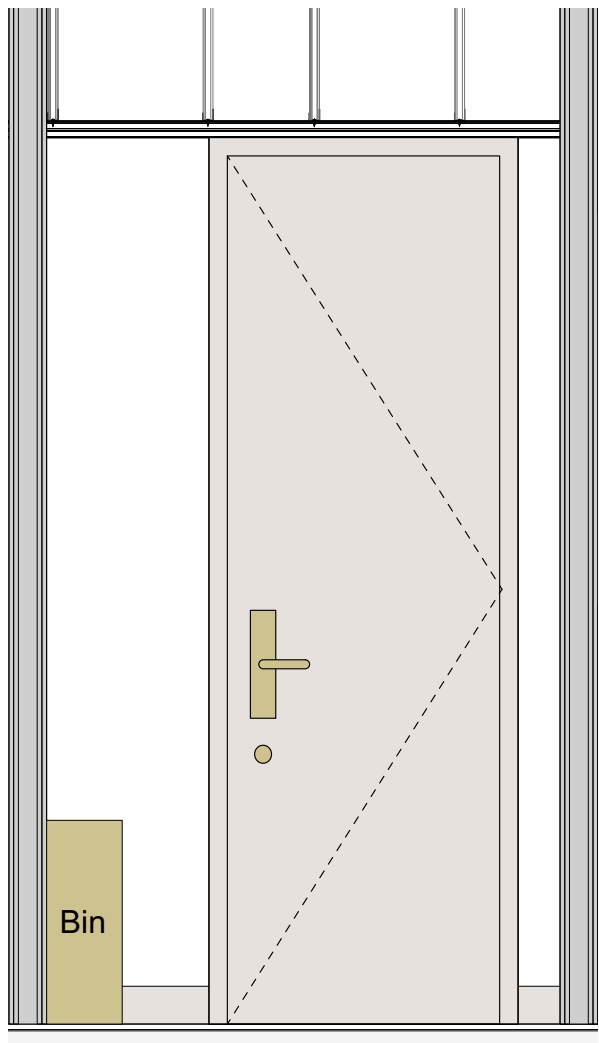
- Notes**
- FX-107. Spec Code:N10/275 Wall hung mirror with black decorative frame
- FX-113. Spec Code: xxx/xxx H/L Hinged mirror panel/ Frosted glass to WC'S
- SAN-101.Spec Code: N13/336 Deck mounted monobloc mixer
- SAN-102.Spec Code: N13/336 Basin: To be counter mounted in standard WC's/Shower rooms and wall mounted in accessible WC's/Shower rooms.
- SAN-104.Spec Code: N13/301 WC: Wall mounted, 700 projection toilet with seat and soft closing lid
- SAN-106.Spec Code: N13/300 & 301 Concealed cistern and wall hung frame
- SAN-107.Spec Code: N13/300 & 301 Flush plate
- SAN-108.Spec Code: N13/462 Wall mounted Toilet Roll Holder
- SAN-109.Spec Code: N13/429 Wall mounted Toilet Brush Holder
- SAN-111.Spec Code: N13/436 Doc M - Lift-up grab rails and grab rails
- SAN-115.Spec Code: N13/458 Soap dispenser



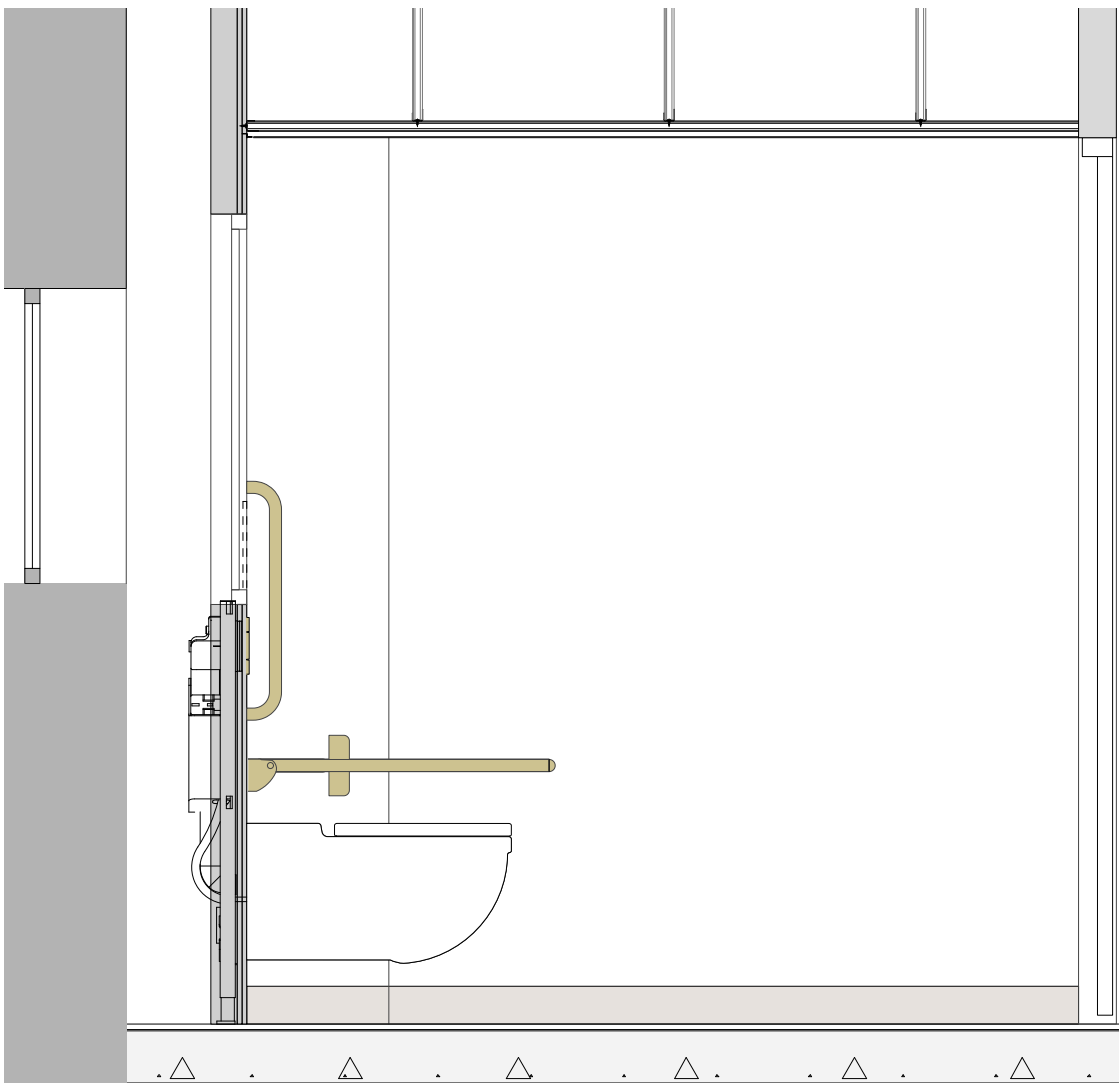
2 Elevation A  
Scale: 1:20



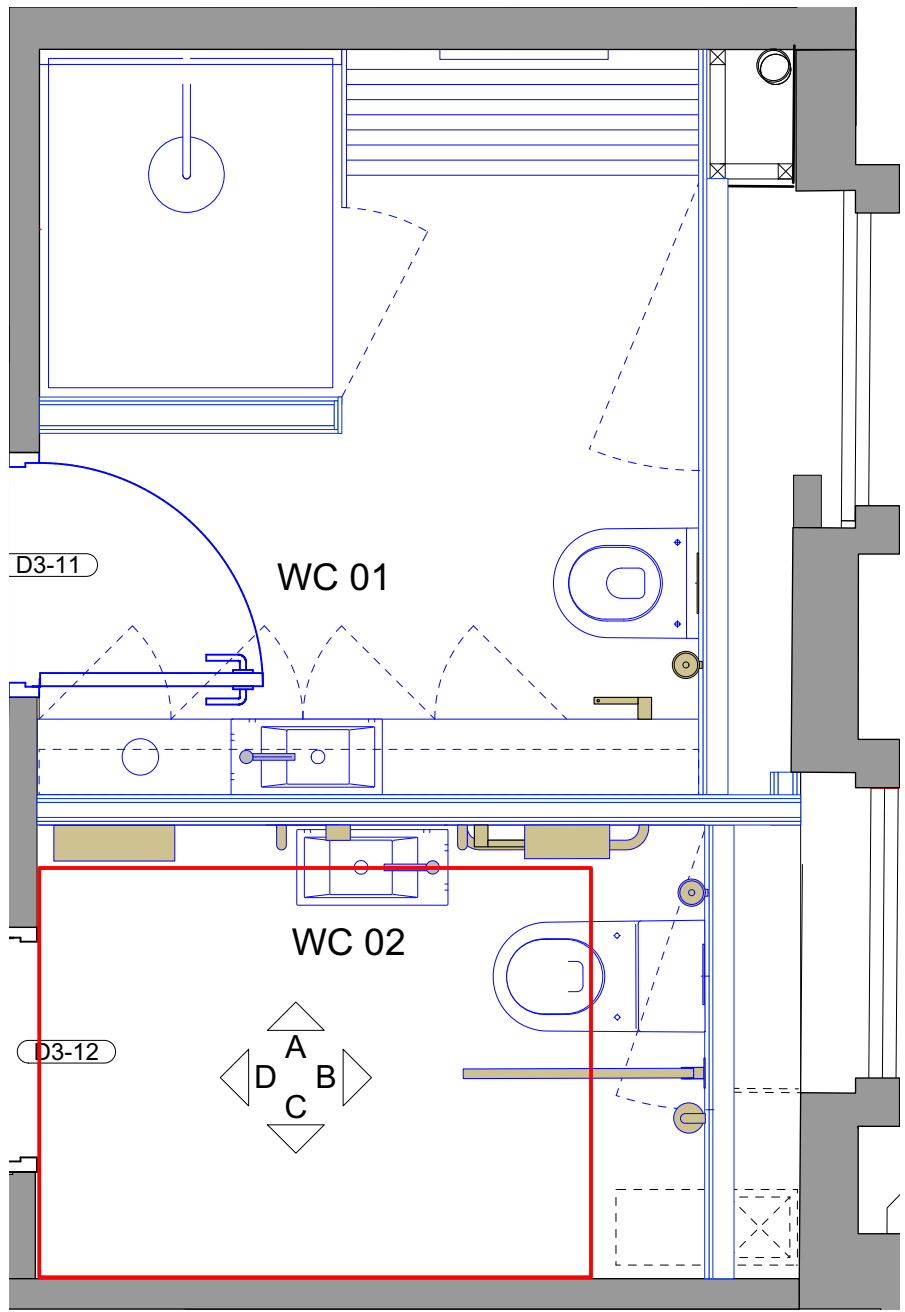
3 Elevation B  
Scale: 1:20



4 Elevation C  
Scale: 1:20



5 Elevation D  
Scale: 1:20



1 Key Plan  
Scale: 1:25

All dimensions to be checked on site prior to commencement of any works, and/or preparation of any shop drawings.

Sizes of and dimensions to any structural or services elements are indicative only. See structural and service engineers drawings for actual sizes / dimensions.

This drawing to be read in conjunction with all other Architect's drawings, specifications and other Consultants' information.

All proprietary systems shown on this drawing are to be installed strictly in accordance with the Manufacturers/Suppliers recommended details.

Any discrepancies between information shown on this drawing and any other contract information or manufacturers/suppliers recommendations is to be brought to the attention of the Architect.

Revision	Date	Amendment
PL1	30/11/2023	Issued for Planning

Date March 2023	Project 31 Great Queen Street	Job Ref. 433
Scale 1:20@A1	Drawn CL	Check MH
Status PLANNING	Client Ref MCF	Drwg. no. 433(WC)216
		Rev. PL1
Hale Brown Architects Ltd. Unit 1.04, Edinburgh House, 170 Kennington Lane, London, SE11 5DP T: 020 3735 7442 E: <a href="mailto:mail@halebrown.com">mail@halebrown.com</a> W: <a href="http://www.halebrown.com">www.halebrown.com</a>		

halebrown  
architects