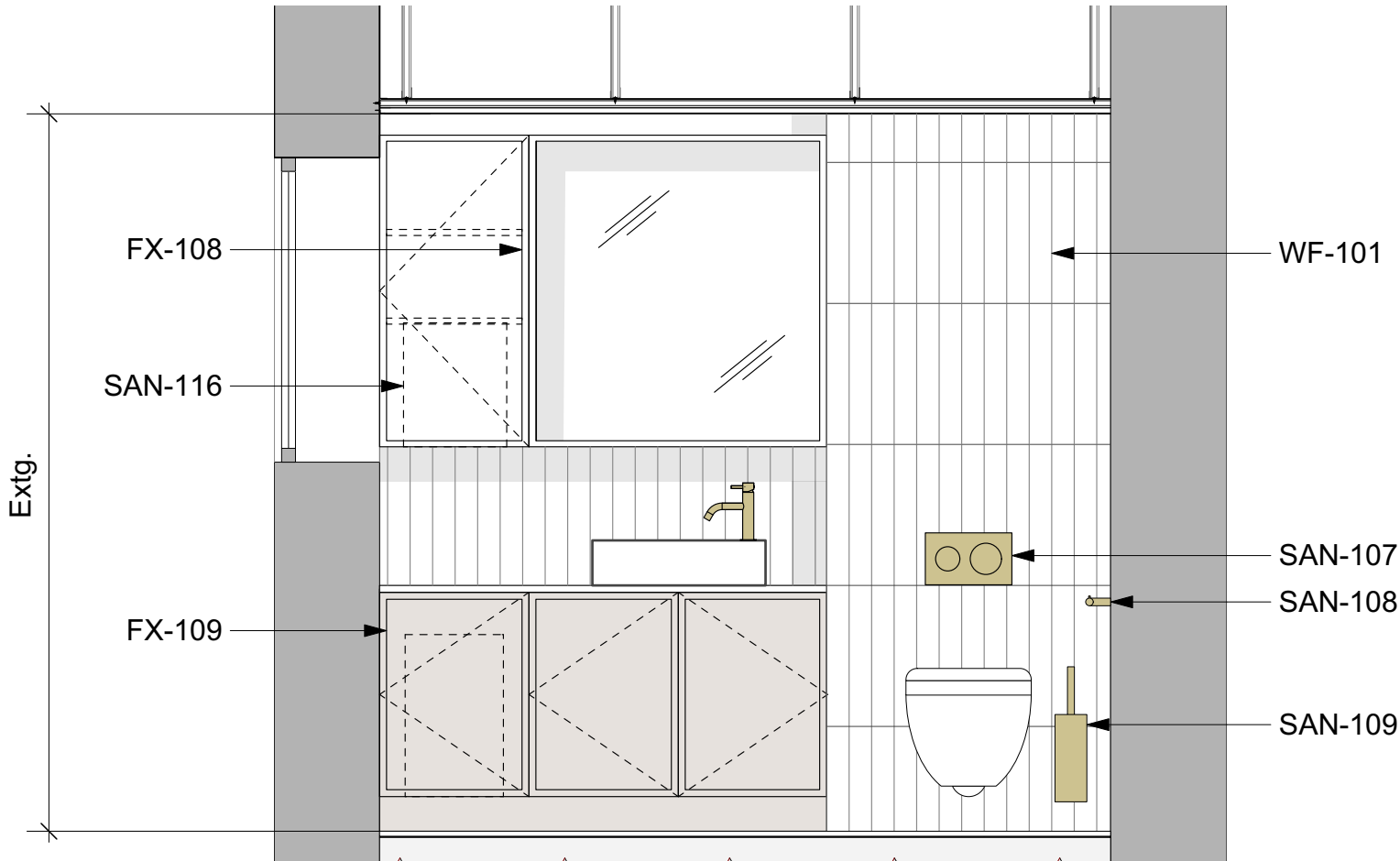
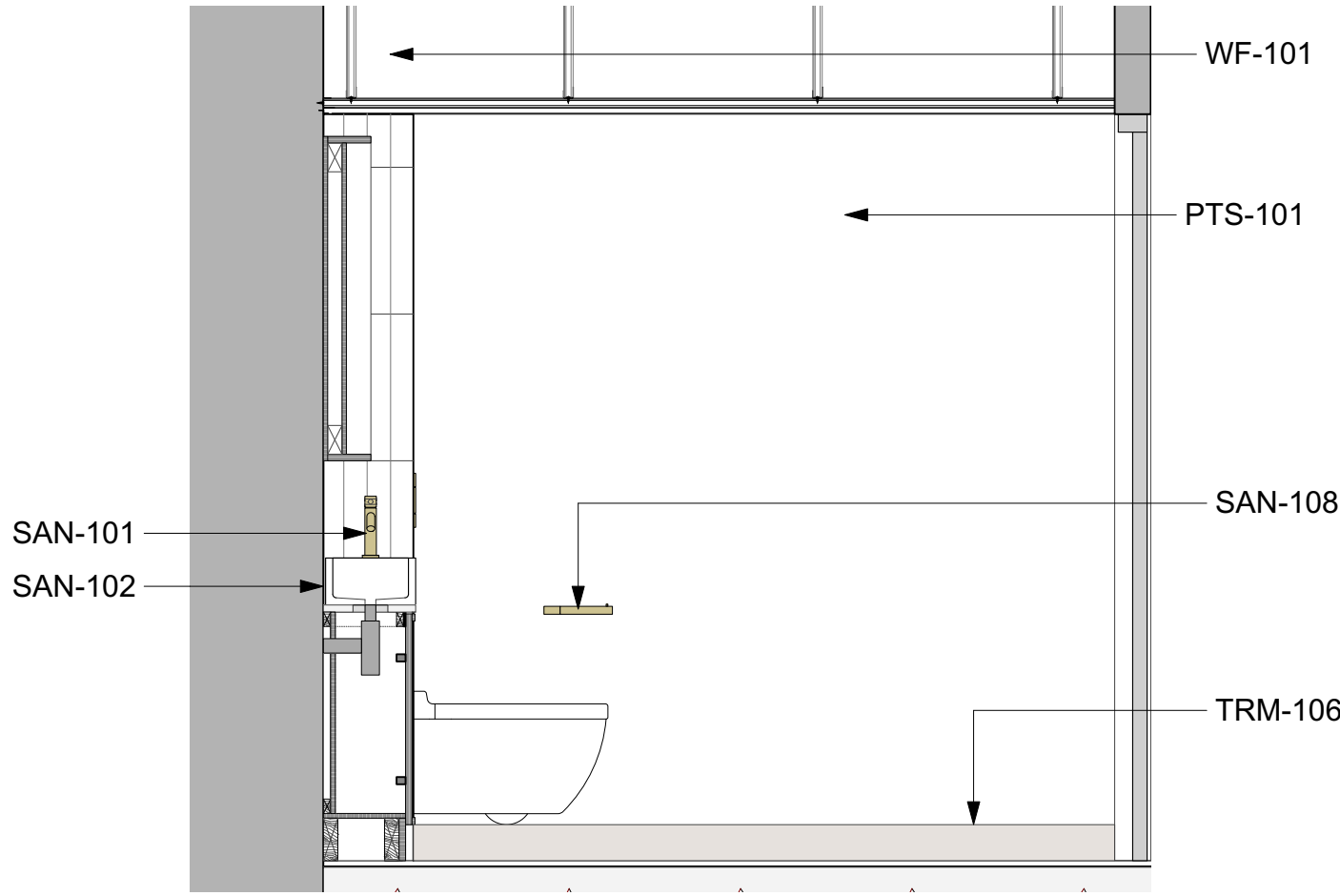


PLANNING

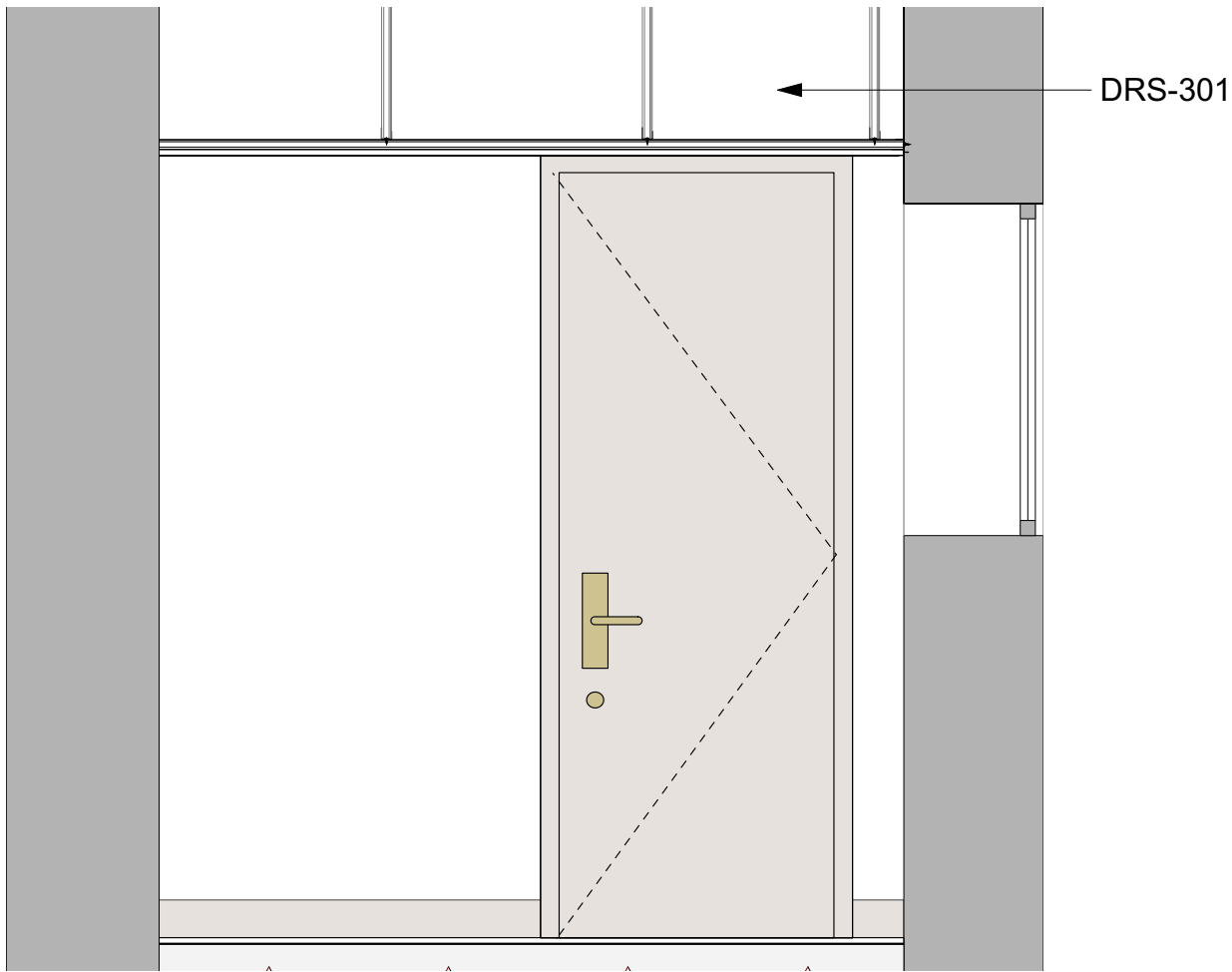
- Notes
- DRS-301. Existing WC/BoH painted timber doors to be retained, prepared to be redecorated. New ironmongery to be installed.
- FX-108. Spec Code: N10/145 High level, wall mounted shelving unit with concealed paper towel dispenser. Veneered hinge door(s) on concealed hinges with push catch release. Veneered internal carcass with 2 x shelves with setback mirrored within veneered timber frame.
- FX-109. Spec Code: N10/146 Low level vanity unit. Lacquered MDF doors. Internal melamine carcass and pull out bin liner. Colour; TBC. Solid surface worktop with cut-out for access to concealed bin. Brushed brass bin ring insert. Finish; TBC
- PTS-101. Spec Code: M60/110 Emulsion Paint; Dulux Trade Diamond Matt
- SAN-101. Spec Code: N13/336 Deck mounted monobloc mixer
- SAN-102. Spec Code: N13/336 Basin: To be counter mounted in standard WC's/Shower rooms and wall mounted in accessible WC's/Shower rooms.
- SAN-103. Spec Code: N13/300 WC: Compact wall mounted toilet with seat and soft closing lid
- SAN-106. Spec Code: N13/300 & 301 Concealed cistern and wall hung frame
- SAN-107. Spec Code: N13/300 & 301 Flush plate
- SAN-108. Spec Code: N13/462 Wall mounted Toilet Roll Holder
- SAN-109. Spec Code: N13/429 Wall mounted Toilet Brush Holder
- SAN-116. Spec Code: N13/438 Paper towel dispenser
- TRM-106. Spec Code: P20/202 Plant on tile skirting. Schluter-Jolly-AC (100G) tile trim to top edge; Colour TBC .
- WF-101. /



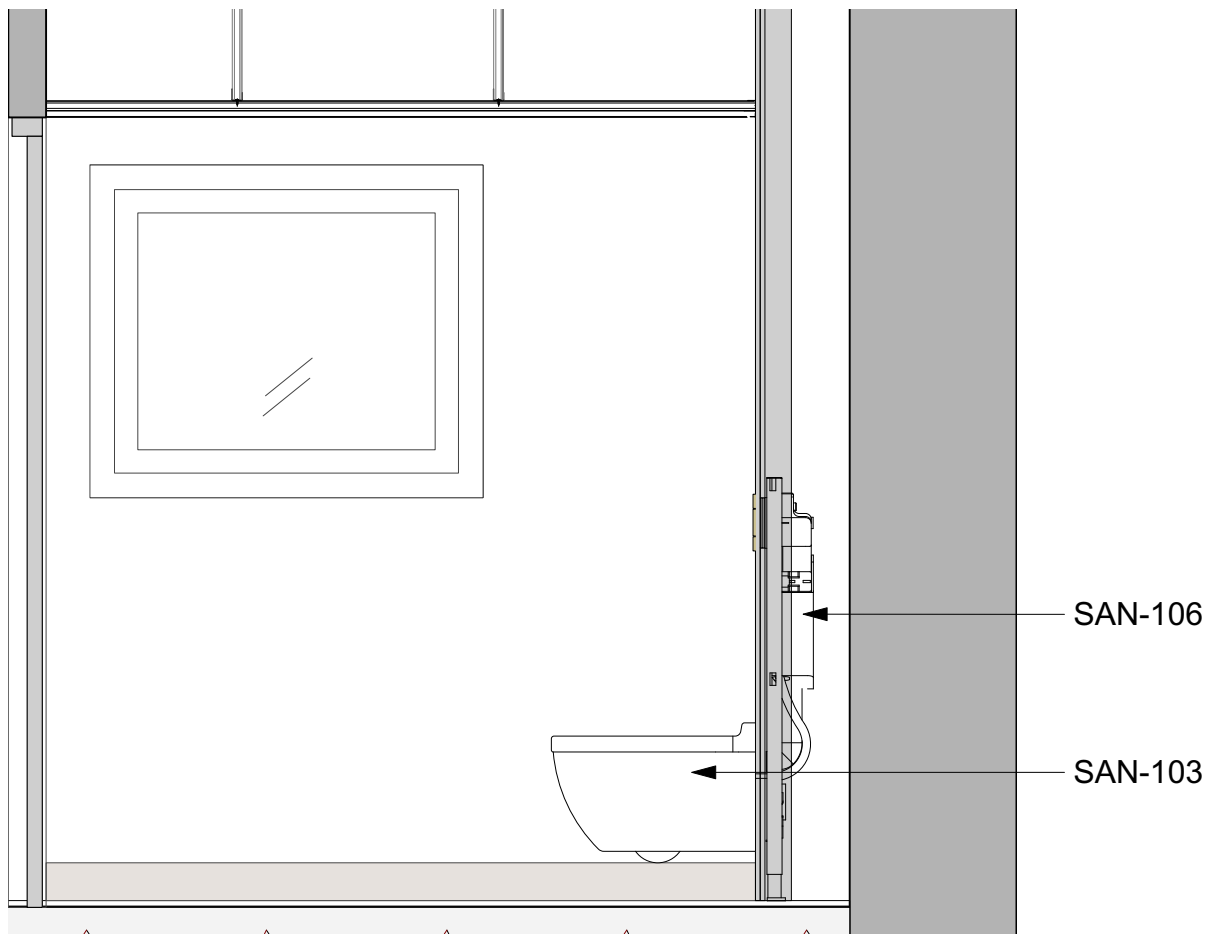
1 Elevation A
Scale: 1:20



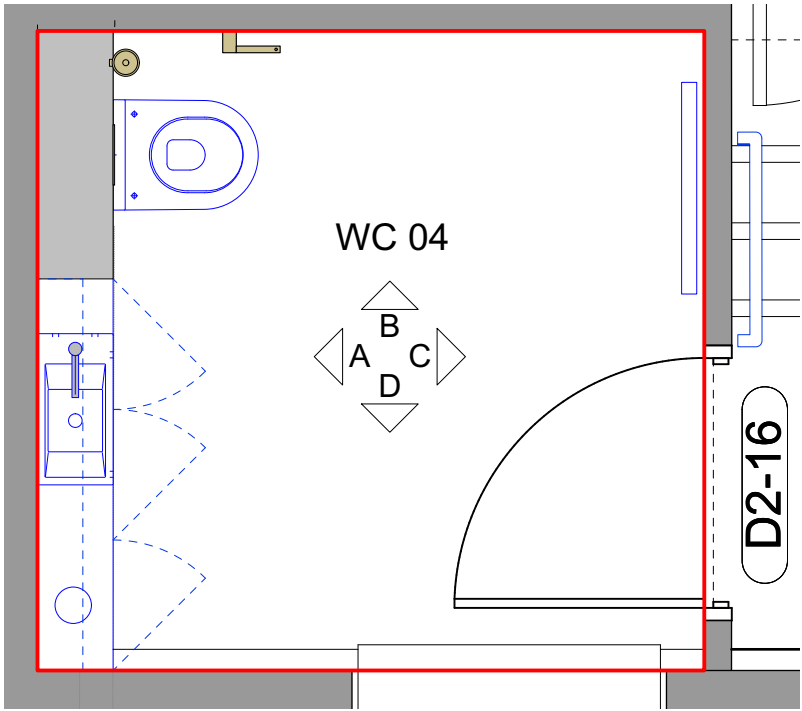
2 Elevation B
Scale: 1:20



3 Elevation C
Scale: 1:20



4 Elevation D
Scale: 1:20



5 Key Plan
Scale: 1:25

All dimensions to be checked on site prior to commencement of any works, and/or preparation of any shop drawings. Sizes of and dimensions to any structural or services elements are indicative only. See structural and service engineers drawings for actual sizes / dimensions. This drawing to be read in conjunction with all other Architect's drawings, specifications and other Consultants' information. All proprietary systems shown on this drawing are to be installed strictly in accordance with the Manufacturers/Suppliers recommended details. Any discrepancies between information shown on this drawing and any other contract information or manufacturers/suppliers recommendations is to be brought to the attention of the Architect.	Revision	Date	Amendment	Date	Project			Job Ref.	halebrown architects
	PL1	30/11/2023	Issued for Planning	March 2023	31 Great Queen Street			433	
				Scale	Drawn	Check	Title		
				1:20@A1	CL	MH	Second Floor Elevations WC 04 (32)		
				Status	Client Ref	Drwg. no.	Rev.		
				PLANNING	MCF	433(WC)213	PL1		
				Hale Brown Architects Ltd. Unit 1.04, Edinburgh House, 170 Kennington Lane, London, SE11 5DP					
				T: 020 3735 7442		E: mail@halebrown.com		W: www.halebrown.com	