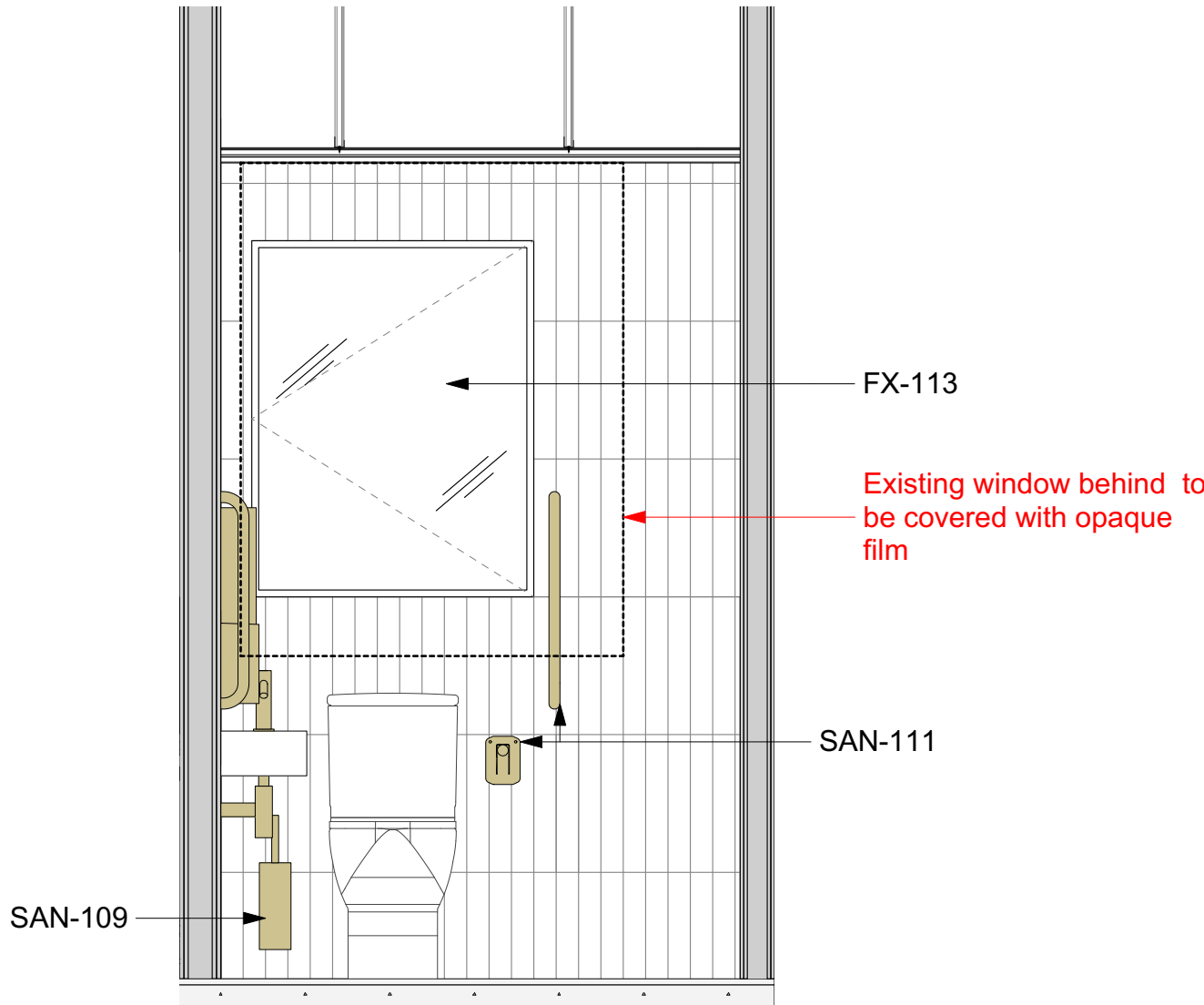


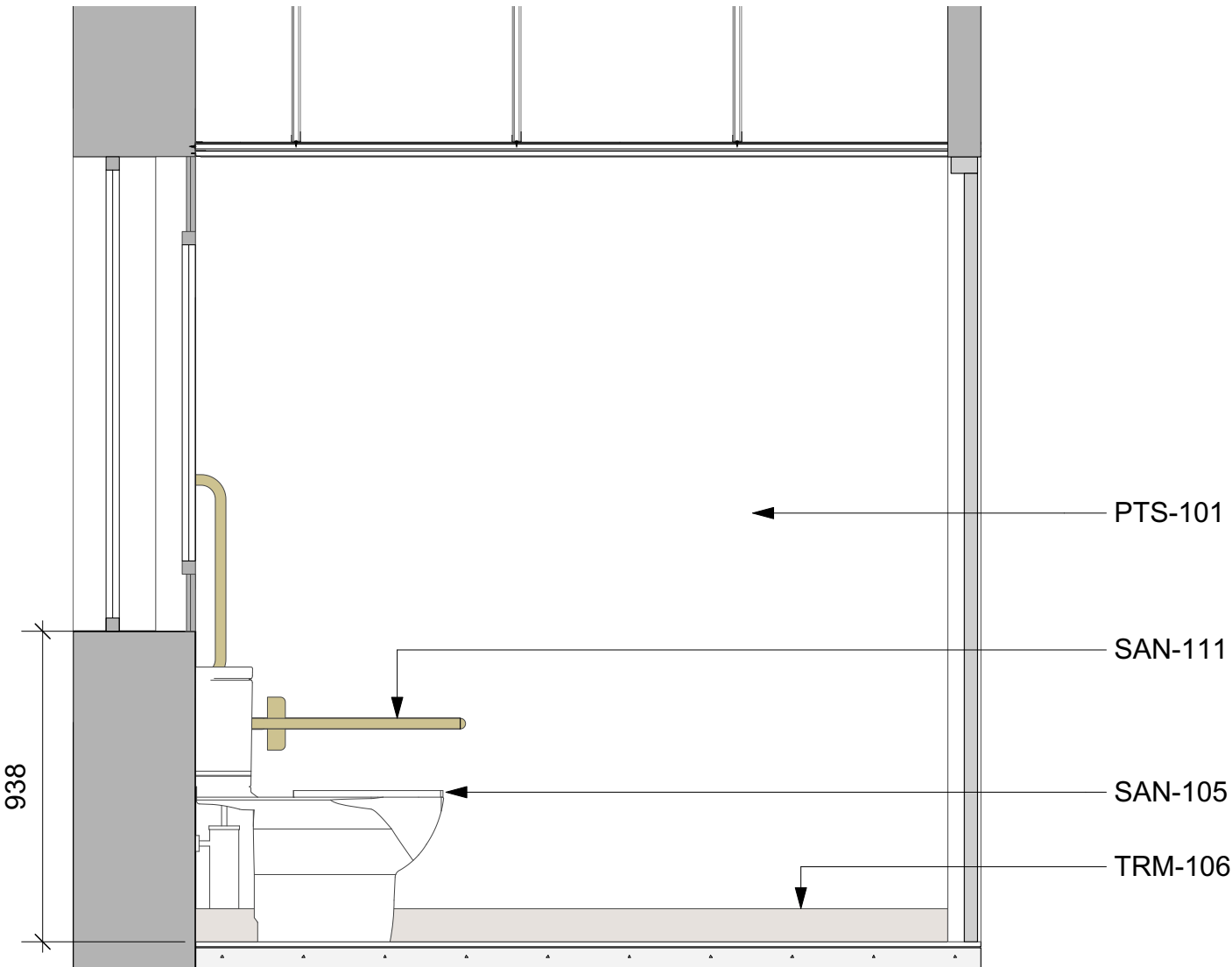
PLANNING

Notes

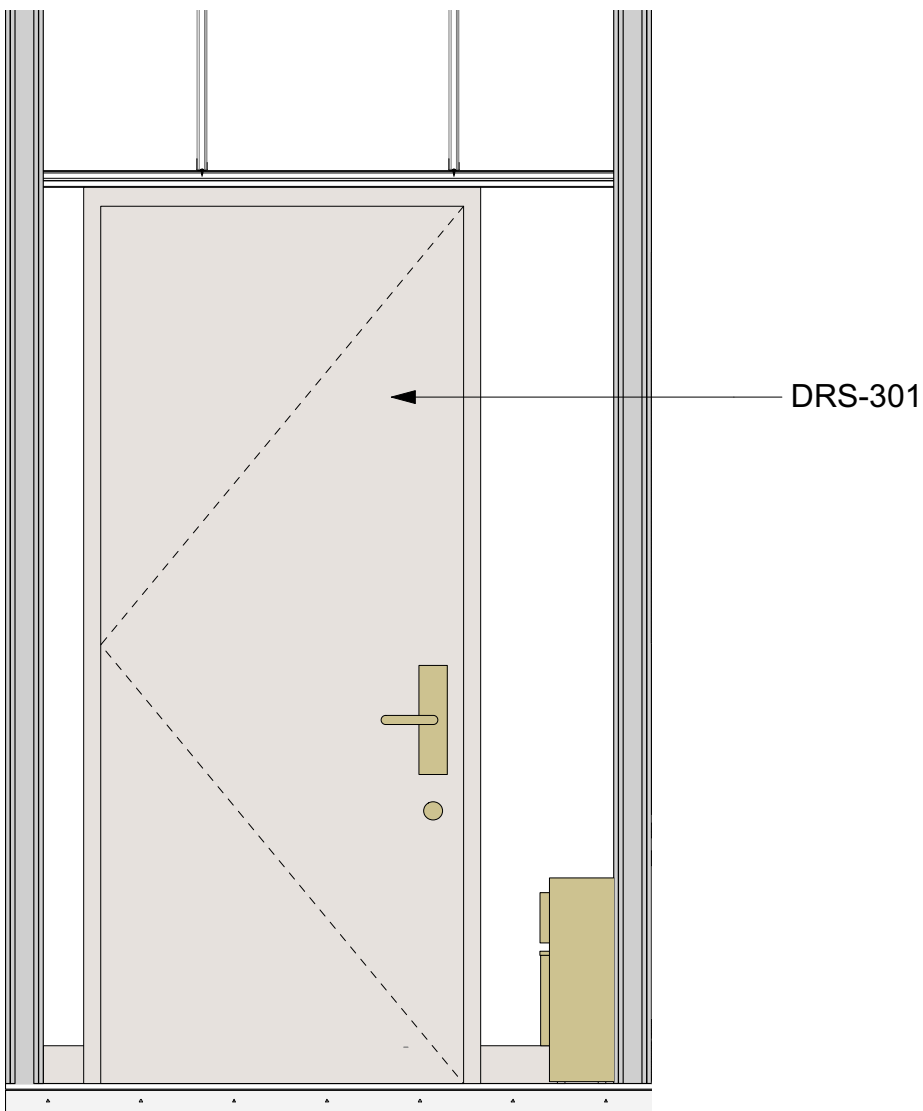
- DRS-301.Existing WC/BoH painted timber doors to be retained, prepared to be redecorated. New ironmongery to be installed.
- FX-107. Spec Code:N10/275 Wall hung mirror with black decorative frame
- FX-113. Spec Code: xxx/xxx H/L Hinged mirror panel/ Frosted glass to WC'S
- PTS-101. Spec Code: M60/110 Emulsion Paint; Dulux Trade Diamond Matt
- SAN-101.Spec Code: N13/336 Deck mounted monobloc mixer
- SAN-102. Spec Code: N13/336 Basin: To be counter mounted in standard WC's/Shower rooms and wall mounted in accessible WC's/Shower rooms.
- SAN-105. Spec Code: N13/302 WC: close-coupled Big Toilet
- SAN-108. Spec Code: N13/462 Wall mounted Toilet Roll Holder
- SAN-109. Spec Code: N13/429 Wall mounted Toilet Brush Holder
- SAN-111. Spec Code: N13/436 Doc M - Lift-up grab rails and grab rails
- SAN-115. Spec Code: N13/458 Soap dispenser
- SAN-116. Spec Code: N13/438 Paper towel dispenser
- TRM-106.Spec Code: P20/202 Plant on tile skirting. Schluter-Jolly-AC (100G) tile trim to top edge; Colour TBC .



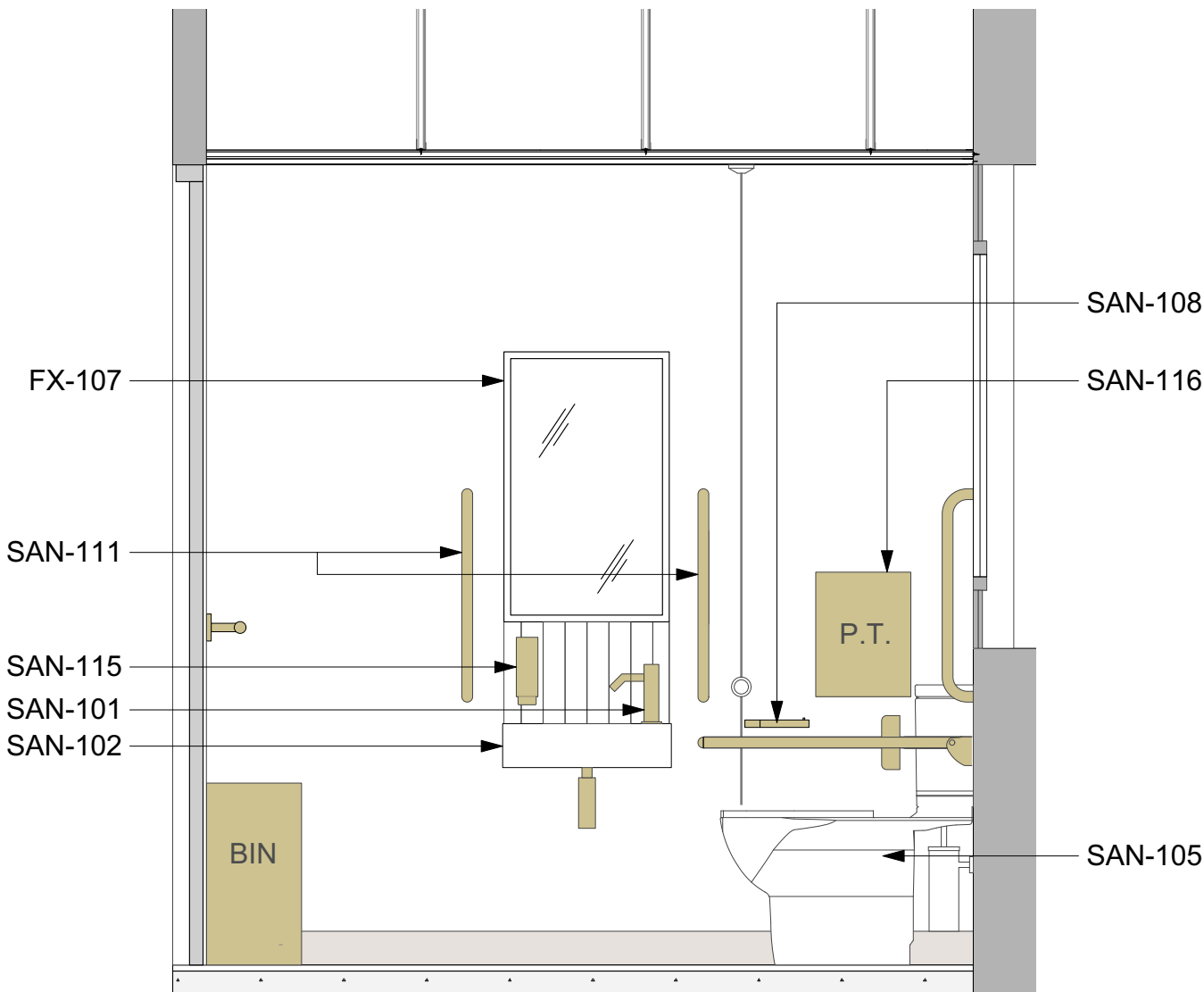
2 Elevation A
Scale: 1:20



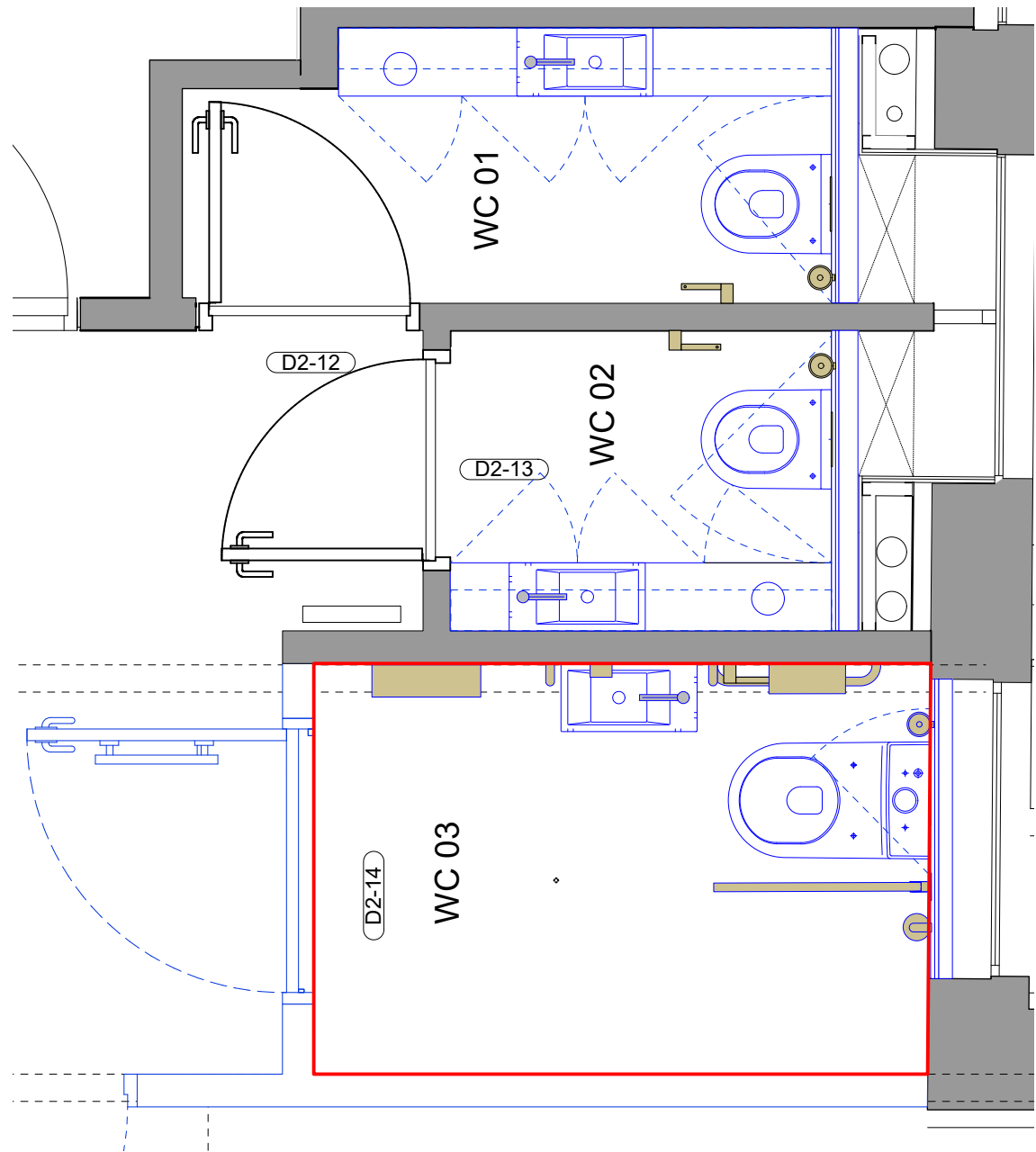
3 Elevation B
Scale: 1:20



4 Elevation C
Scale: 1:20



5 Elevation D
Scale: 1:20



1 Key Plan
Scale: 1:25

All dimensions to be checked on site prior to commencement of any works, and/or preparation of any shop drawings. Sizes of and dimensions to any structural or services elements are indicative only. See structural and service engineers drawings for actual sizes / dimensions. This drawing to be read in conjunction with all other Architect's drawings, specifications and other Consultants' information. All proprietary systems shown on this drawing are to be installed strictly in accordance with the Manufacturers/Suppliers recommended details. Any discrepancies between information shown on this drawing and any other contract information or manufacturers/suppliers recommendations is to be brought to the attention of the Architect.			
--	--	--	--

Revision	Date	Amendment
PL1	30/11/2023	Issued for Planning

Date March 2023		Project 31 Great Queen Street		Job Ref. 433
Scale 1:20@A1	Drawn CL	Check MH	Title Second Floor Elevations Accessible WC 03 (31)	Rev. PL1
Status PLANNING	Client Ref MCF		Drwg. no. 433(WC)212	
Hale Brown Architects Ltd. Unit 1.04, Edinburgh House, 170 Kennington Lane, London, SE11 5DP T: 020 3735 7442 E: mail@halebrown.com W: www.halebrown.com				

halebrown
architects