

PLANNING

Notes

FX-108. Spec Code: N10/145 High level, wall mounted shelving unit with concealed paper towel dispenser. Veneered hinge door(s) on concealed hinges with push catch release. Veneered internal carcass with 2 x shelves with setback mirrored within veneered timber frame.

FX-109. Spec Code: N10/146 Low level vanity unit. Lacquered MDF doors. Internal melamine carcass and pull out bin liner. Colour; TBC. Solid surface worktop with cut-out for access to concealed bin. Brushed brass bin ring insert. Finish; TBC

FX-112. Spec Code: N13/488 Cantilevered, wall fixed timber slat bench to shower rooms

PTS-101. Spec Code: M60/110 Emulsion Paint; Dulux Trade Diamond Matt

SAN-101. Spec Code: N13/336 Deck mounted monobloc mixer

SAN-102. Spec Code: N13/336 Basin: To be counter mounted in standard WC's/Shower rooms and wall mounted in accessible WC's/Shower rooms.

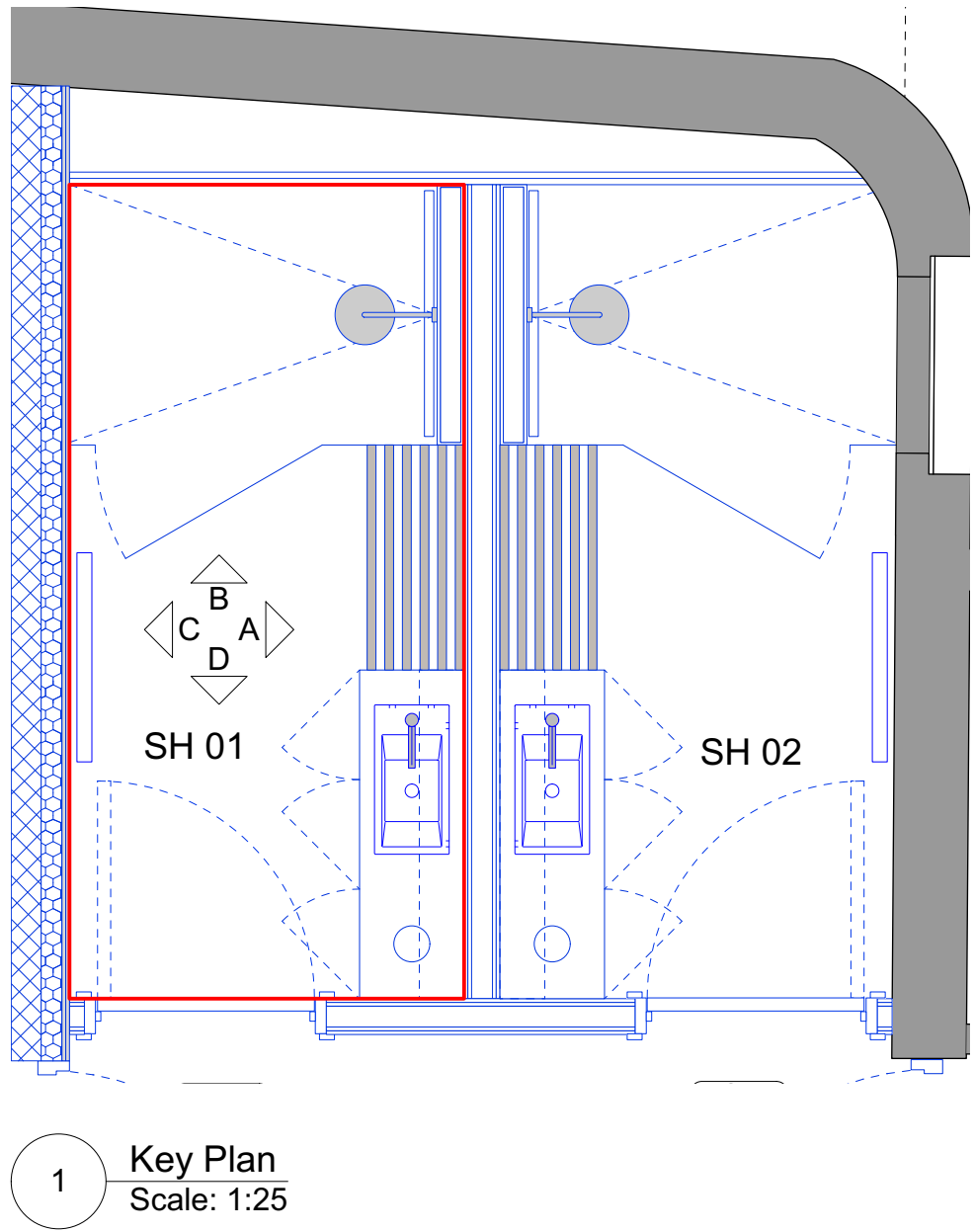
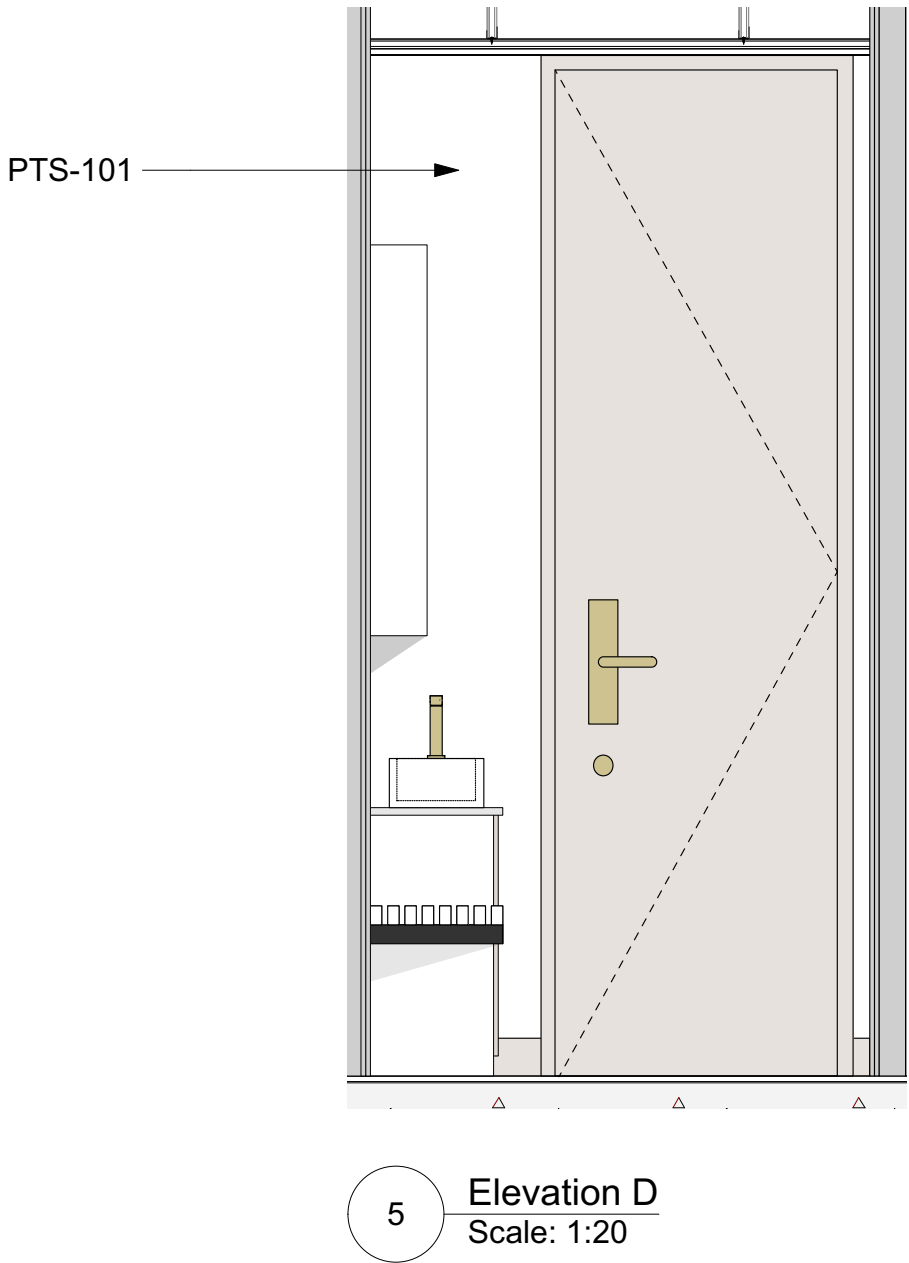
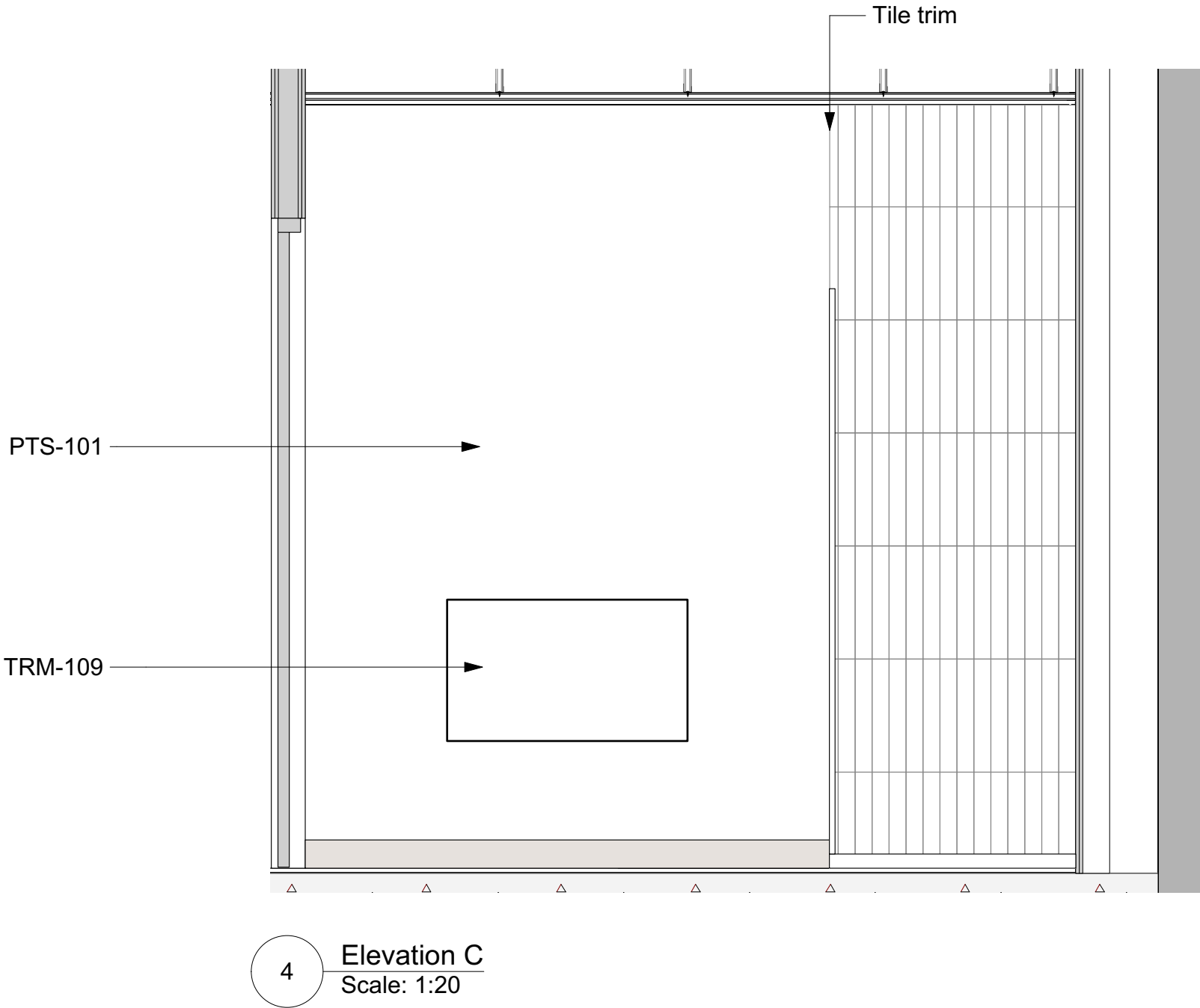
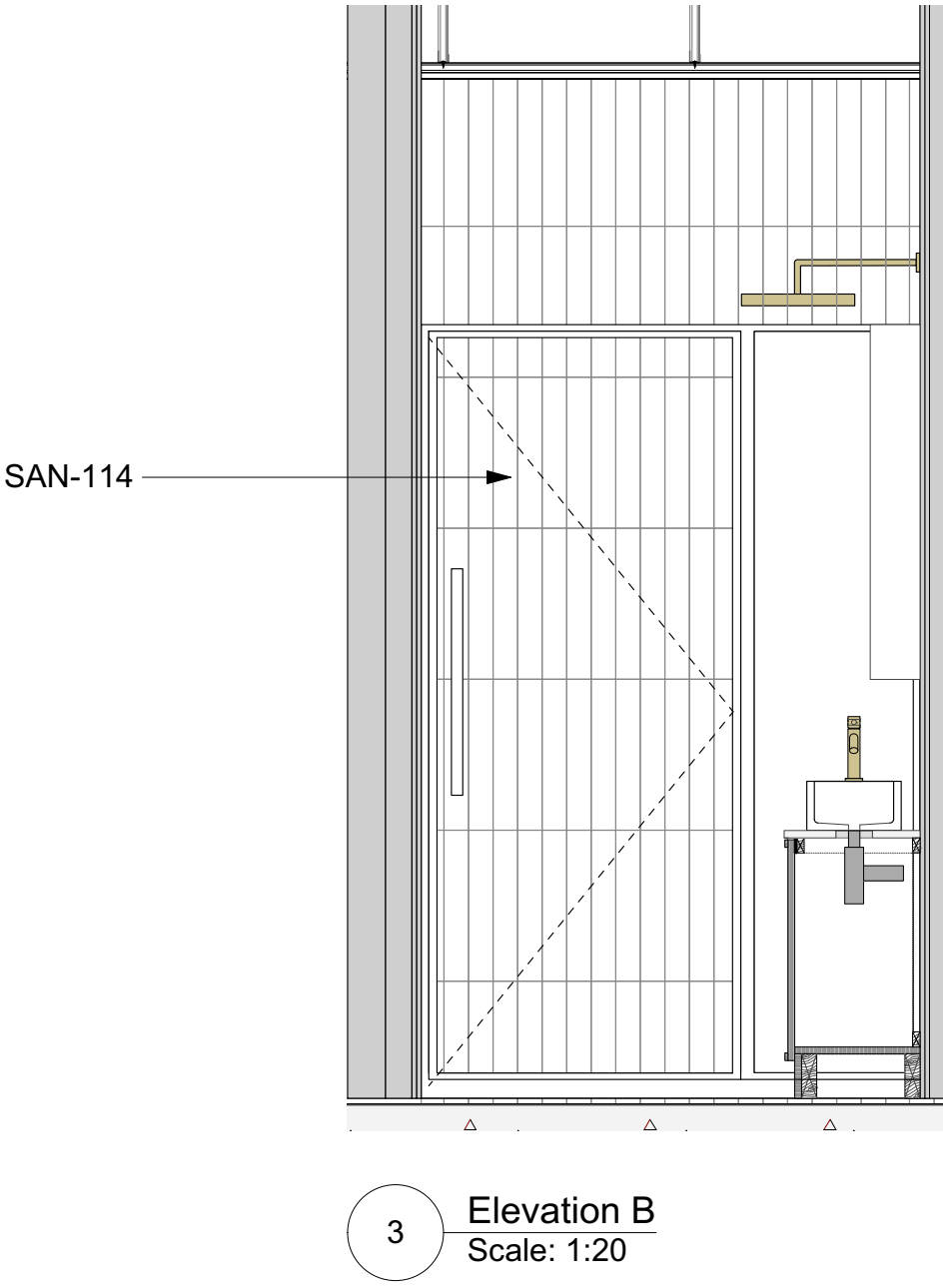
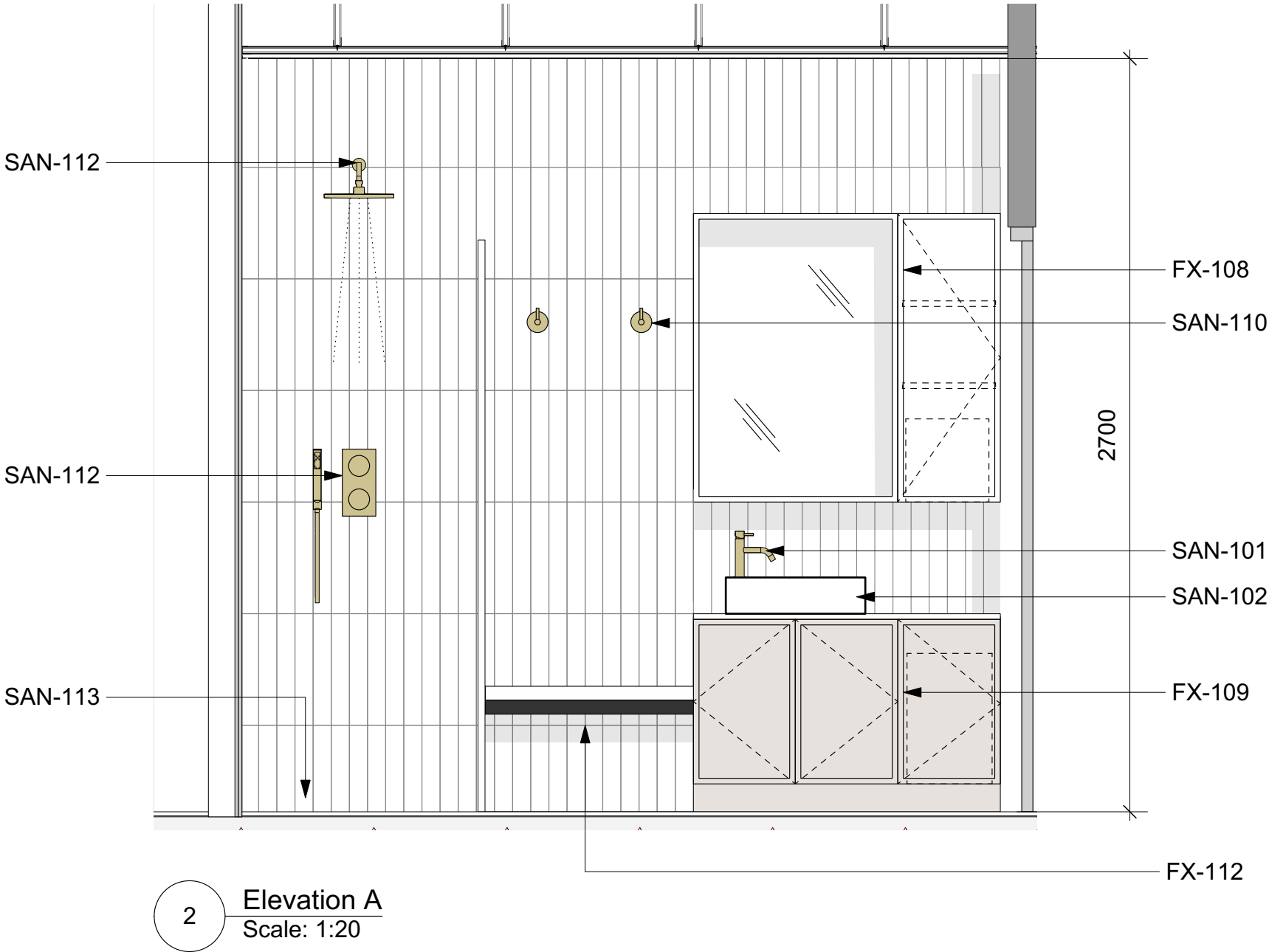
SAN-110. Spec Code: N13/429 Robe hook

SAN-112. Spec Code: N13/375 Shower set with wall mounted head and handheld shower

SAN-113. Spec Code: N13/375 Shower tray

SAN-114. Spec Code: N13/375 shower screen with hinged door, low iron toughened glass

TRM-109. Spec Code: L30/585 Replace anti-slip tape to Basement stairs



All dimensions to be checked on site prior to commencement of any works, and/or preparation of any shop drawings.
Sizes of and dimensions to any structural or services elements are indicative only. See structural and service engineers drawings for actual sizes / dimensions.
This drawing to be read in conjunction with all other Architect's drawings, specifications and other Consultants' information.
All proprietary systems shown on this drawing are to be installed strictly in accordance with the Manufacturers/Suppliers recommended details.
Any discrepancies between information shown on this drawing and any other contract information or manufacturers/suppliers recommendations is to be brought to the attention of the Architect.

Revision	Date	Amendment
PL1	30/11/2023	Issued for Planning

Date	March 2023	Project	31 Great Queen Street	Job Ref.	433
Scale	1:20@A1	Drawn	CL	Check	MH
Status	PLANNING	Client Ref	MCF	Drwg. no.	433(WC)204
				Rev.	PL1
Hale Brown Architects Ltd. Unit 1.04, Edinburgh House, 170 Kennington Lane, London, SE11 5DP					
T: 020 3735 7442 E: mail@halebrown.com W: www.halebrown.com					

halebrown
architects