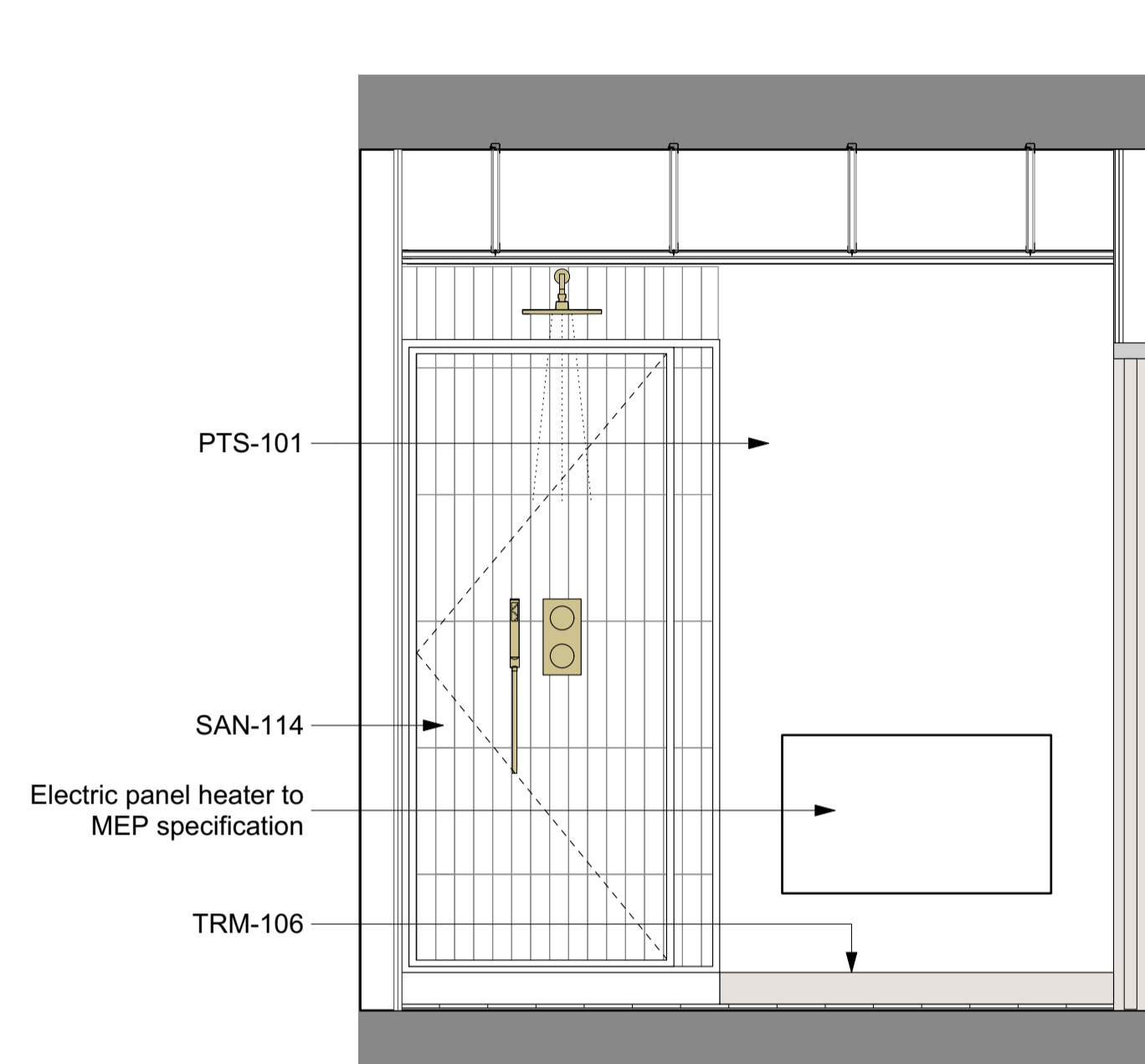


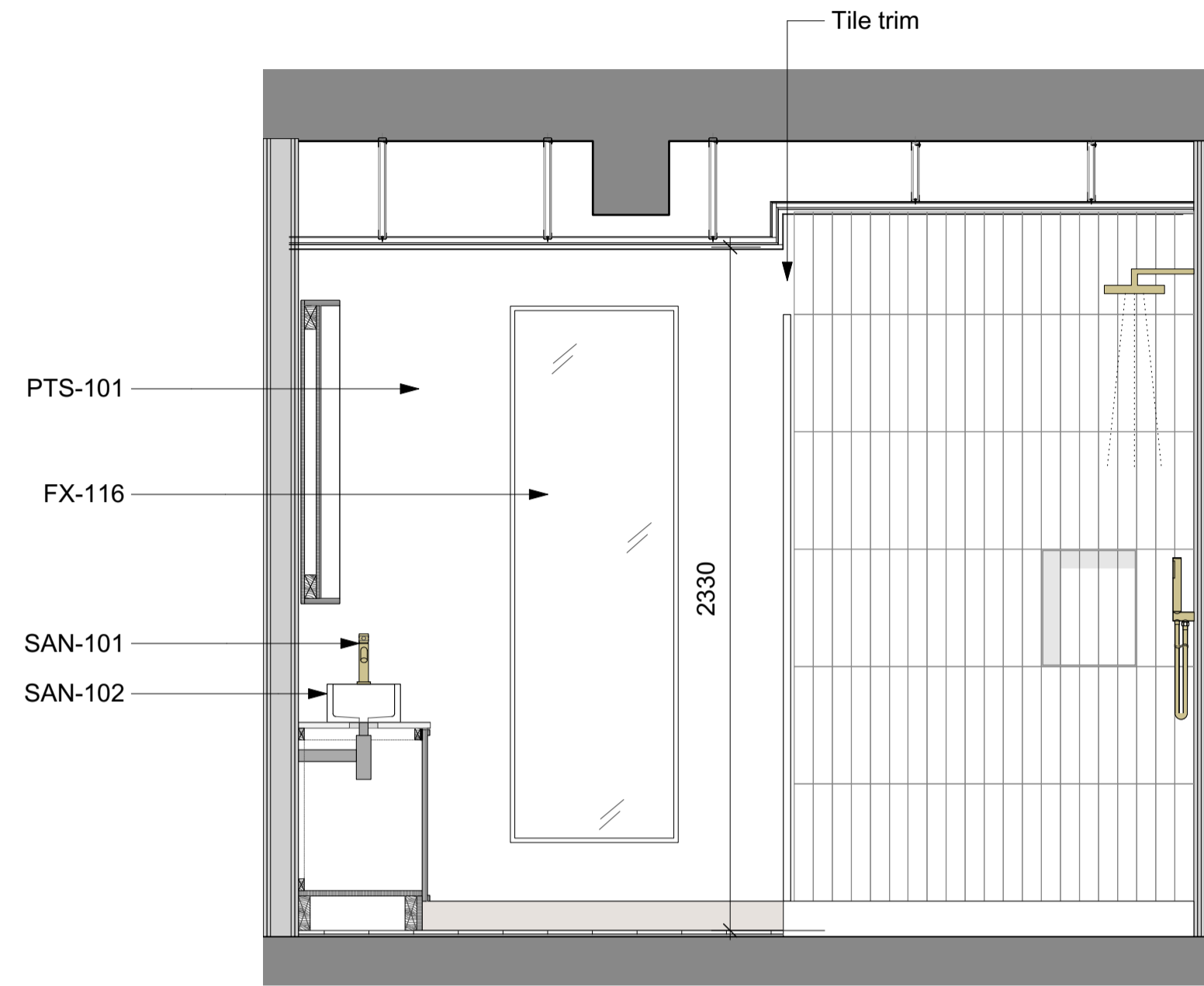
PLANNING

Notes

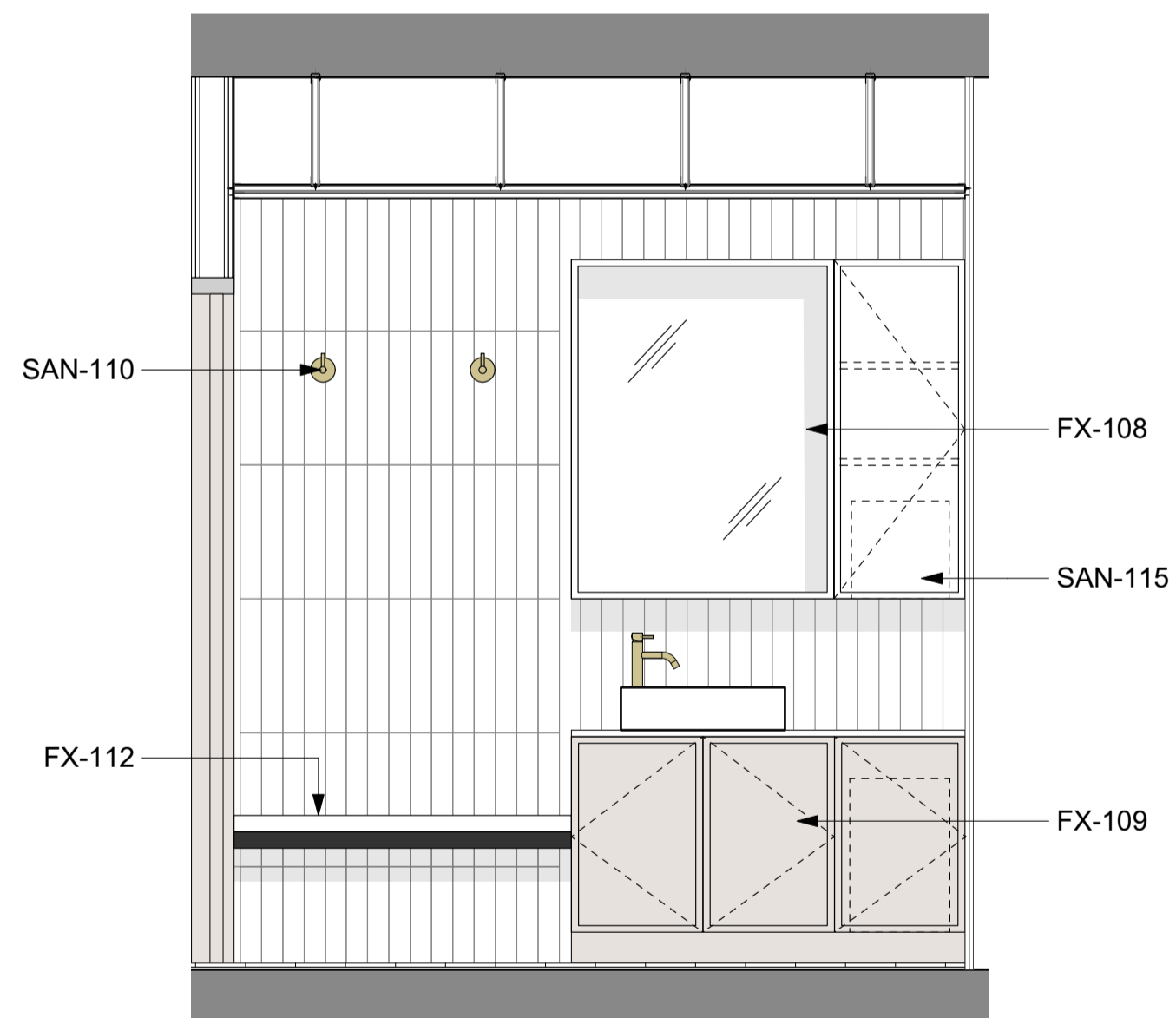
- FX-108. Spec Code: N10/145 High level, wall mounted shelving unit with concealed paper towel dispenser. Veneered hinge door(s) on concealed hinges with push catch release. Veneered internal carcass with 2 x shelves with setback mirrored within veneered timber frame.
- FX-109. Spec Code: N10/146 Low level vanity unit. Lacquered MDF doors. Internal melamine carcass and pull out bin liner. Colour; TBC. Solid surface worktop with cut-out for access to concealed bin. Brushed brass bin ring insert. Finish; TBC
- FX-112. Spec Code: N13/488 Cantilevered, wall fixed timber slat bench to shower rooms
- FX-116. Spec Code: L40/551 Full height, wall hung Mirror
- PTS-101. Spec Code: M60/110 Emulsion Paint; Dulux Trade Diamond Matt
- SAN-101. Spec Code: N13/336 Deck mounted monobloc mixer
- SAN-102. Spec Code: N13/336 Basin: To be counter mounted in standard WC's/Shower rooms and wall mounted in accessible WC's/Shower rooms.
- SAN-110. Spec Code: N13/429 Robe hook
- SAN-112. Spec Code: N13/375 Shower set with wall mounted head and handheld shower
- SAN-113. Spec Code: N13/375 Shower tray
- SAN-114. Spec Code: N13/375 shower screen with hinged door, low iron toughened glass
- SAN-115. Spec Code: N13/458 Soap dispenser
- SAN-117. Spec Code: N13/442 Built-in shower niche to be aligned with vertical and horizontal tiling layout. Brushed brass tile trims to edges.
- TRM-106. Spec Code: P20/202 Plant on tile skirting. Schluter-Jolly-AC (100G) tile trim to top edge; Colour TBC .



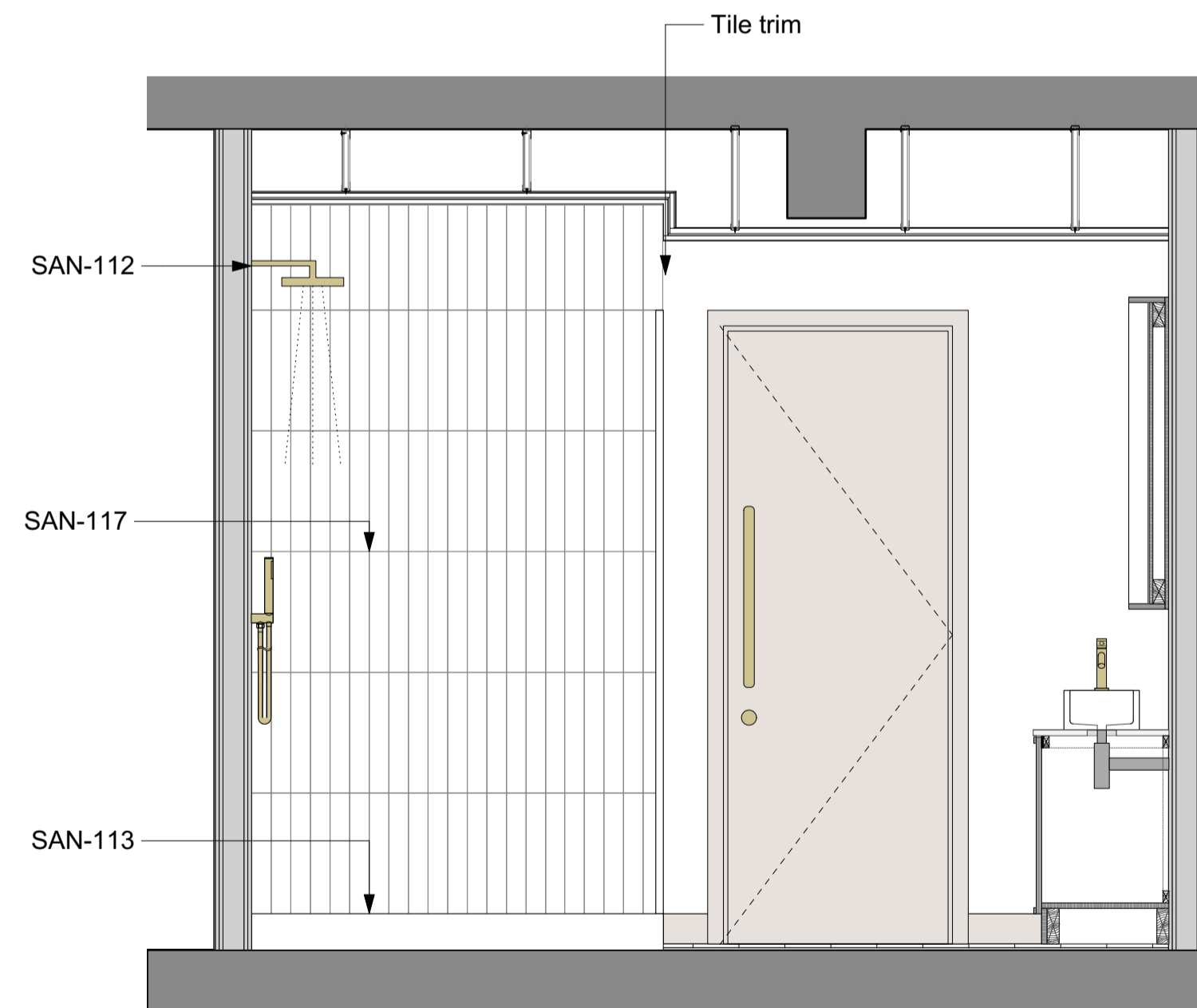
2 Elevation A
Scale: 1:20



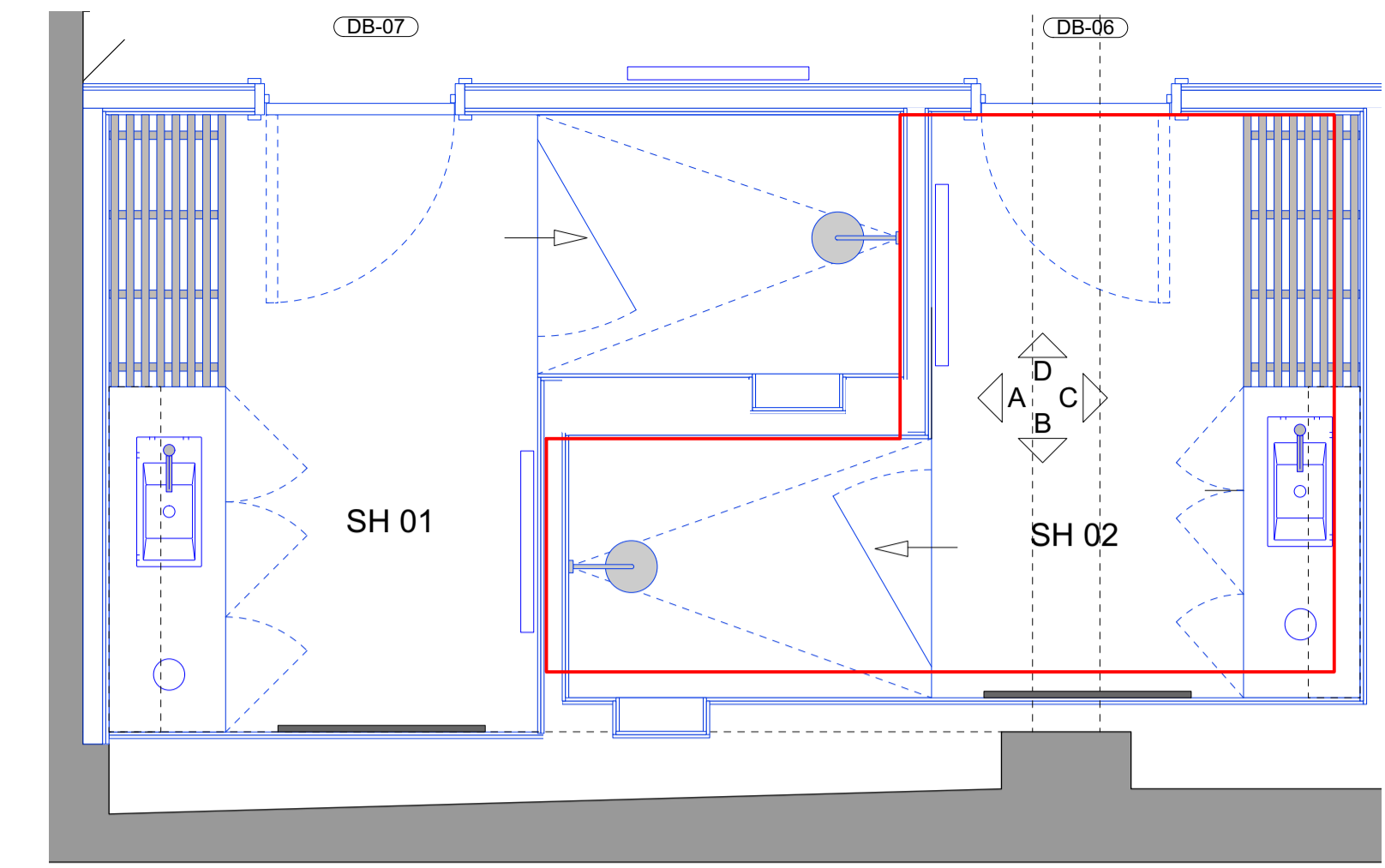
3 Elevation B
Scale: 1:20



4 Elevation C
Scale: 1:20



5 Elevation D
Scale: 1:20



1 Key Plan
Scale: 1:25

All dimensions to be checked on site prior to commencement of any works, and/or preparation of any shop drawings.
 Sizes of and dimensions to any structural or services elements are indicative only. See structural and service engineers drawings for actual sizes / dimensions.
 This drawing to be read in conjunction with all other Architect's drawings, specifications and other Consultants' information.
 All proprietary systems shown on this drawing are to be installed strictly in accordance with the Manufacturers/Suppliers recommended details.
 Any discrepancies between information shown on this drawing and any other contract information or manufacturers/suppliers recommendations is to be brought to the attention of the Architect.

| Revision | Date | Amendment |
|----------|------------|---------------------|
| PL1 | 30/11/2023 | Issued for Planning |
| | | |
| | | |

| | | | | | |
|--|------------|------------|-----------------------|----------|---------------------------------------|
| Date | March 2023 | Project | 31 Great Queen Street | Job Ref. | 433 |
| Scale | 1:20@A1 | Drawn | CL | Check | MH |
| Status | PLANNING | Client Ref | MCF | Title | Basement Shower Elevations SH 02 (31) |
| | | Drwg. no. | 433(WC)202 | Rev. | PL1 |
| Hale Brown Architects Ltd. Unit 1.04, Edinburgh House, 170 Kennington Lane, London, SE11 5DP | | | | | |
| T: 020 3735 7442 E: mail@halebrown.com W: www.halebrown.com | | | | | |

halebrown
architects