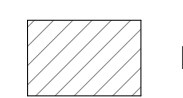


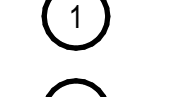



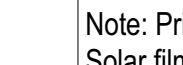
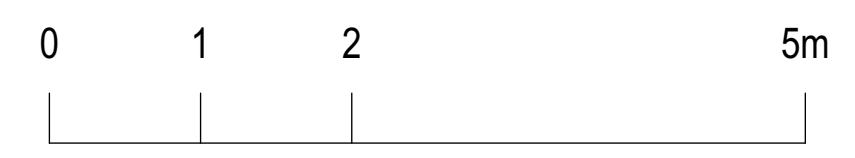


General Arrangement Notes

-  Not in scope
-  Area in scope
-  Area not surveyed
-  Proposed secondary sliding glazing, retained timber sill boards
-  Proposed secondary side hung glazing, retained timber sill boards
-  Proposed insulated panel behind existing frosted glass window with mechanical ventilation grill
-  Proposed secondary sliding glazing, new timber sill boards to match retained timber sills
-  Proposed secondary side hung glazing, new timber sill boards to match retained timber sills

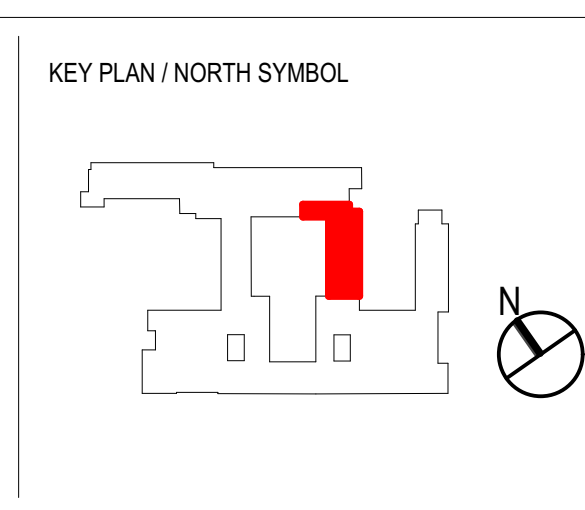
Note: Primary window to be made good internally. Solar film applied to internal face.



Rev	Date	Dwn	Chk	Description
001	18/10/2023	OS	LM	For Planning

Rev	Date	Dwn	Chk	Description

Rev	Date	Dwn	Chk	Description



JRA
John Robertson Architects
111 Southwark Street,
London, SE1 1UF
02076335100
www.jra.co.uk
enquiries@jra.co.uk

Project
Tavistock House
London

Client
British Medical Association
BMA House, Tavistock Square London
WC1H 9JP
0200 123 1233
bma@bma.org.uk

Drawing Title
Block E - Proposed Fourth Floor Plan

Scale 1:50 @ A0 Internal Project No. 1998

Dwg No. **1998-JRA-02-04-DR-A-0174**

Suitability FOR INFORMATION S2

Revision FOR PLANNING **P01**

This document and its design content is © John Robertson Architects Ltd. It shall be used in conjunction with all other associated project information including models, specifications, schedules and related consultants documents. Do not scale from documents. All dimensions to be checked on site. Immediately report any discrepancies, errors or omissions on this document to the Originator. If in doubt ASK.

Source File: BMAHouse_175282623 - BIMcloud Base for Architects 23/10/2023 BMA House/198-JRA-02-04-DR-A-001_BMA House Team Model_WORKSTREAM2