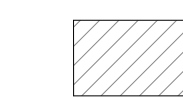
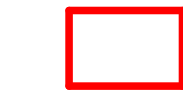

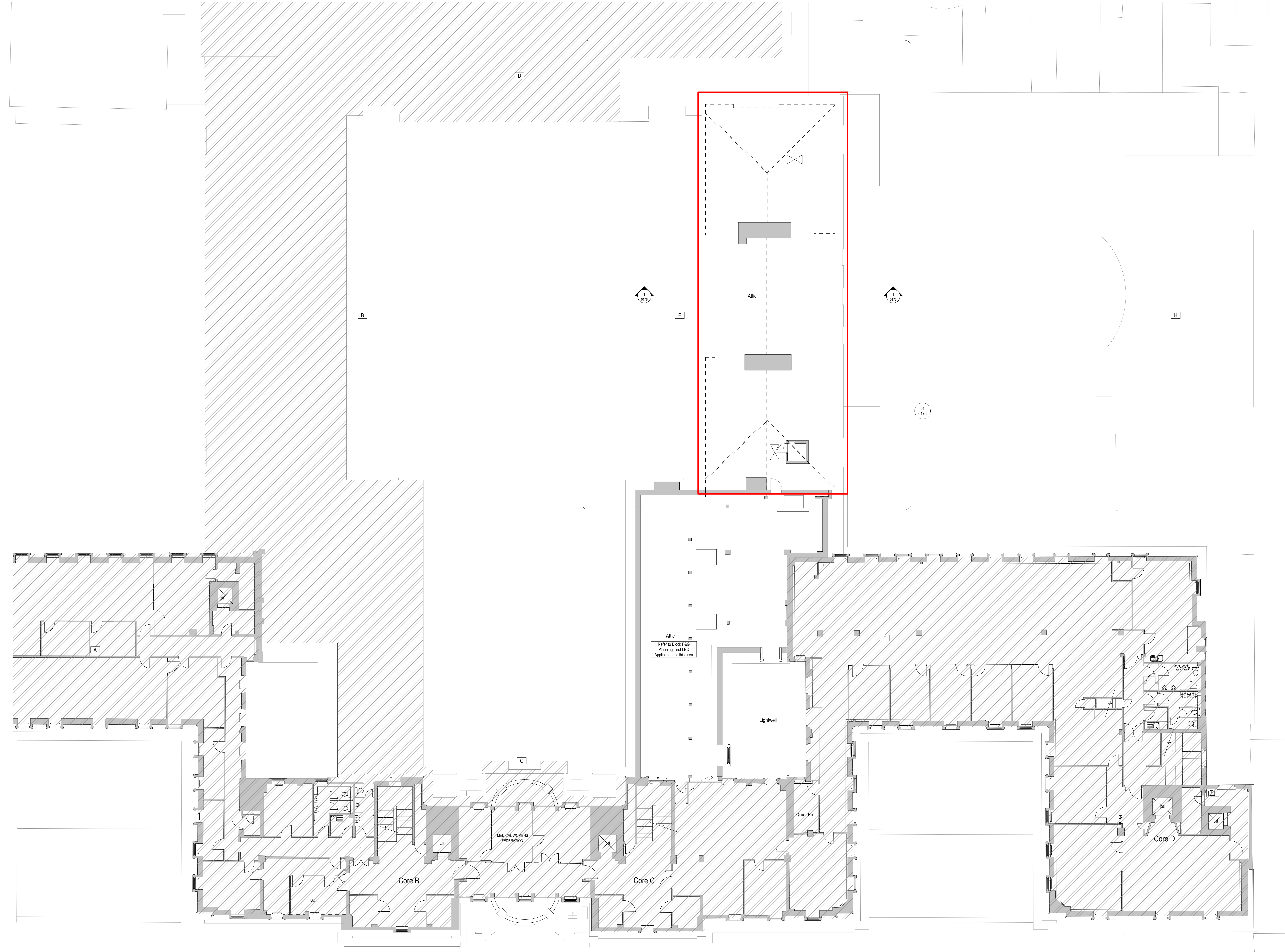
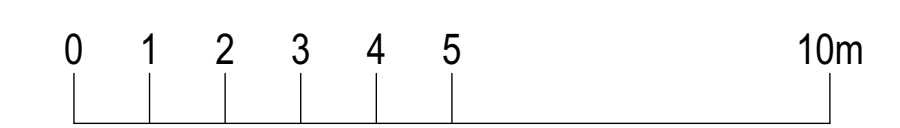


General Arrangement Notes

-  Not in scope
-  Area in scope
-  Area not surveyed



Attic
Refer to Block E/C
Planning and LBC
Application for this area



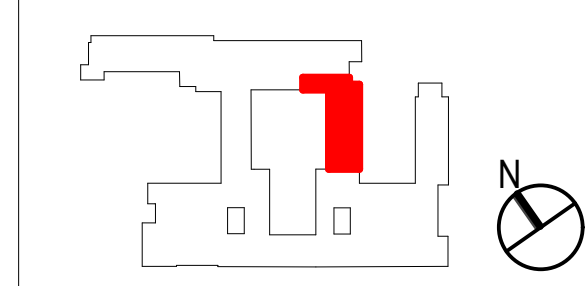
| Rev | Date | Dwn | Chk | Description |
|-----|------------|-----|-----|-----------------|
| P01 | 02/02/2023 | JRB | LM | For Information |
| P02 | 21/07/2023 | PP | LM | For Information |
| P03 | 01/08/2023 | PP | LM | For Planning |
| P04 | 18/10/2023 | OS | LM | For Planning |

Detail markers added

| Rev | Date | Dwn | Chk | Description |
|-----|------|-----|-----|-------------|
| | | | | |

| Rev | Date | Dwn | Chk | Description |
|-----|------|-----|-----|-------------|
| | | | | |

KEY PLAN / NORTH SYMBOL



John Robertson Architects
111 Southwark Street,
London, SE1 1UF
02076335100
www.jra.co.uk
enquiries@jra.co.uk

Project
Tavistock House
London

Client
British Medical
Association
BMA House, Tavistock Square London
WC1H 9EP
0200 123 1233
bma@bma.org.uk

Drawing Title
Block E - Proposed Fifth Floor Plan
(Attic)

Scale 1:100 @ A0 Internal Project No. 1998

Dwg No. 1998-JRA-02-05-DR-A-0155

Suitability FOR INFORMATION S2

Revision FOR PLANNING P04

Source File: BMAHouse_20230203 - BMAHouse.dwg for
Architect: 21/08/2023 BMA House/198-JRA-02-05-DR-A-001
BMA House Team Model, WORKSTREAM2