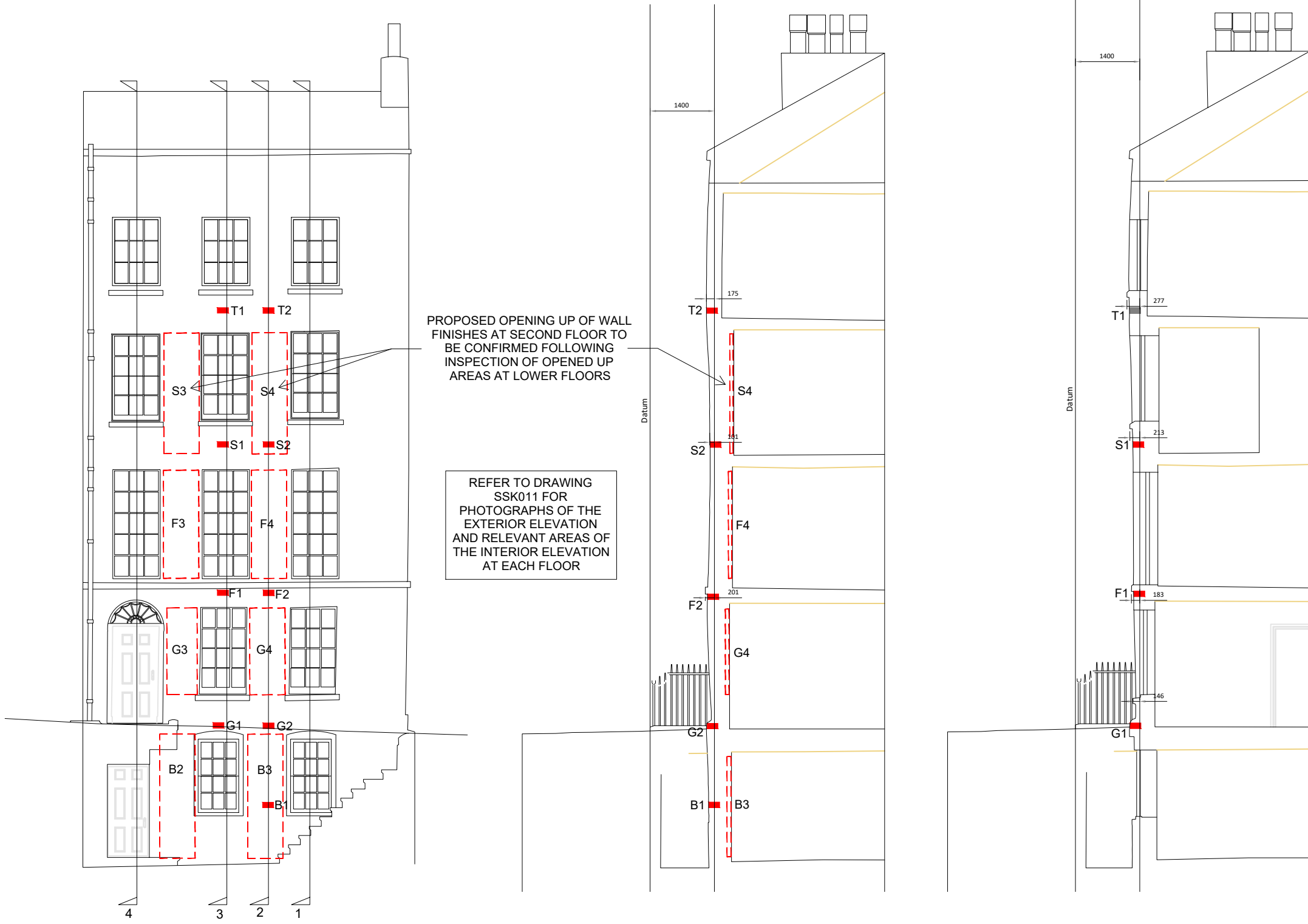


This drawing must be read in conjunction with the specification and all other relevant drawings. Do not scale from this drawing.



PROPOSED OPENING UP OF WALL FINISHES AT SECOND FLOOR TO BE CONFIRMED FOLLOWING INSPECTION OF OPENED UP AREAS AT LOWER FLOORS

REFER TO DRAWING SSK011 FOR PHOTOGRAPHS OF THE EXTERIOR ELEVATION AND RELEVANT AREAS OF THE INTERIOR ELEVATION AT EACH FLOOR

NORTH ELEVATION

SECTION 2

SECTION 3

NOTES

All necessary permissions and approvals are to be obtained before commencing any intrusive works.

All services are to be traced and their locations confirmed prior to commencing any intrusive works.

All site operations are to be undertaken by fully trained and qualified personnel.

The contractor is to take all necessary precautions to screen and protect relevant areas from the works.

All intrusive works are to proceed from basement upwards and inspected by the structural engineer at each stage.

All opened up areas are to be reinstated to suit their previous appearance following inspection by the structural engineer.

LEGEND

■ B1 Brick to be removed at each location marked thus to expose the original brickwork facade for inspection. All relevant bricks are to be appropriately tagged before removal by carefully cutting out the existing mortar using hand tools ensuring no damage is caused. After inspection all bricks are to be replaced using traditional lime/sand mortar (1 part NHL 2 to 3 parts sharp sand or similar approved) colour matched and texture matched to the current appearance to the Conservation Officer's approval.

▭ B3 Internal wall finishes to be removed at each location marked thus to expose the original brickwork wall for inspection. All relevant finishes are to be appropriately tagged before careful removal ensuring no damage is caused. After inspection all finishes are to be replaced to match the current appearance making use of traditional lime/sand plaster (1 part lime putty to 3 parts sharp sand or similar approved) in relevant areas in accordance with the Conservation Officer's approval.

0 .1m 2m

conisbee
 Consulting Structural Engineers
 Consulting Civil Engineers

1-5 Offord St
 London N1 1DH
 Tel 020 7700 6666
 Fax 020 7700 6686
 design@conisbee.co.uk
 www.conisbee.co.uk

Project
 16 Church Row, Hampstead, London

Title
 Proposed opening up works

P231.07.23	Further details added	KC	KC
P126.07.23	Preliminary issue	KC	KC
Rev	Date	Description	Drawn/Check
Drawing Status		Project No	
PRELIMINARY		230595	
Date	Drawn	Drawing No	
JUL 2023	KC	SSK010	
Scale	Engineer	Revision	
1:100@A3	KC	P2	