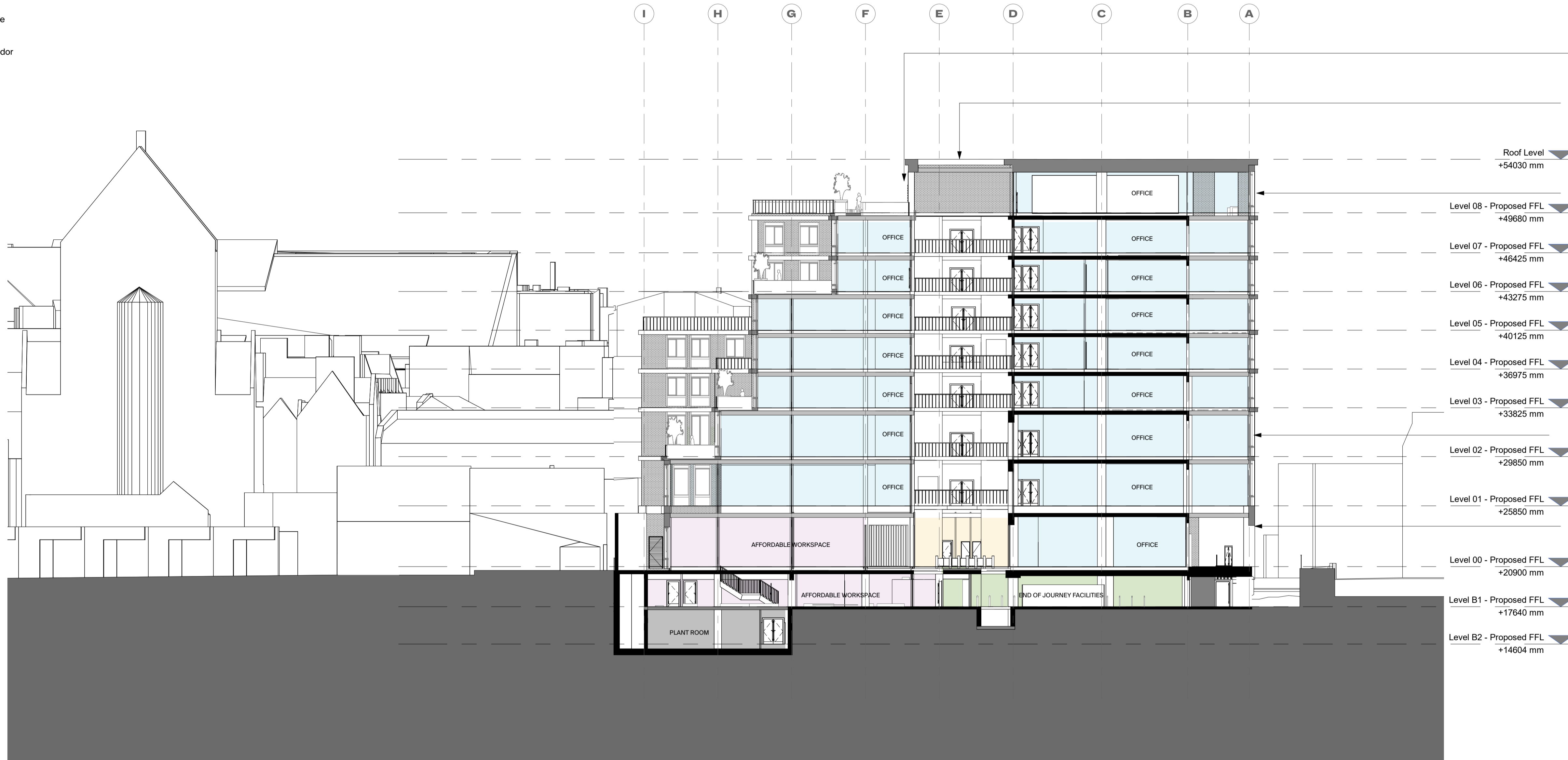


### By Department Legend

- Affordable WorkSpace
- Office
- EOJ Facilities - corridor
- EOJ Facilities
- Plant
- Reception
- Terrace



Red brick coloured louvers set into window openings

Open to plant room

New (white) brick facade with new windows and integrated retractable awnings

New hybrid CLT / steel extension

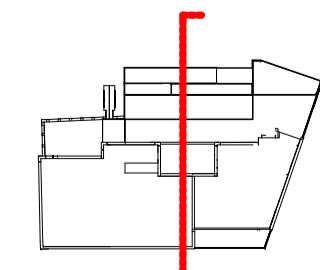
New columns to support extension above

- Roof Level ▼  
+54030 mm
- Level 08 - Proposed FFL ▼  
+49680 mm
- Level 07 - Proposed FFL ▼  
+46425 mm
- Level 06 - Proposed FFL ▼  
+43275 mm
- Level 05 - Proposed FFL ▼  
+40125 mm
- Level 04 - Proposed FFL ▼  
+36975 mm
- Level 03 - Proposed FFL ▼  
+33825 mm
- Level 02 - Proposed FFL ▼  
+29850 mm
- Level 01 - Proposed FFL ▼  
+25850 mm
- Level 00 - Proposed FFL ▼  
+20900 mm
- Level B1 - Proposed FFL ▼  
+17640 mm
- Level B2 - Proposed FFL ▼  
+14604 mm



© Buckley Gray Yeoman Ltd.  
 All dimensions to be checked on site prior to commencement of any works, and/or preparation of any shop drawings. Sizes of and dimensions to any structural elements are indicative only. See structural engineers drawings for actual sizes/dimensions. Sizes of and dimensions to any service elements are indicative only. See service engineers drawings for actual sizes and dimensions.  
 This drawing to be read in conjunction with all other Architect's drawings, specifications and other Consultants' information. All proprietary systems shown on this drawing are to be installed strictly in accordance with the Manufacturers/Suppliers recommended details.  
 Any discrepancies between information shown on this drawing and any other contract information or manufacturers/suppliers recommendations is to be brought to the attention of the Architect.  
 DO NOT SCALE FROM THIS DRAWING.

GENERAL NOTES:  
 1. These drawings are for costing and information only and are **NOT** to be used for tender or construction.  
 2. These architectural drawings have been based off Point2 Surveyors pre-strip out 2D survey drawings issued on November 2022 and therefore, may not include various areas not fully surveyed or building anomalies which could alter the scope and information of these drawings.



A	31.10.23	Issue for Planning
REV	DATE	NOTE

CLIENT	Clare Real Estate (14 Gray's Inn Road) Ltd
PROJECT	Fox Court
DWG No.	1195-BGY-XXX-325S-DR-A-04325

DRAWING		
Planning - Proposed Section FF		
STATUS	APPROVED BY	SUITABILITY
PLANNING	TB	S4
SCALE	DATE	
1 : 200 @A1	31.10.23	

**BGY**  
 BUCKLEY GRAY YEOMAN  
 + 44 20 7033 9913  
 BGY.CO.UK