

By Department Legend

- Core-Fire
- Office
- Risers
- Core-Other
- WC's
- Terrace

Corner windows

New brick and stone facade

Corner windows

New white brick facade with new windows and integrated retractable awnings

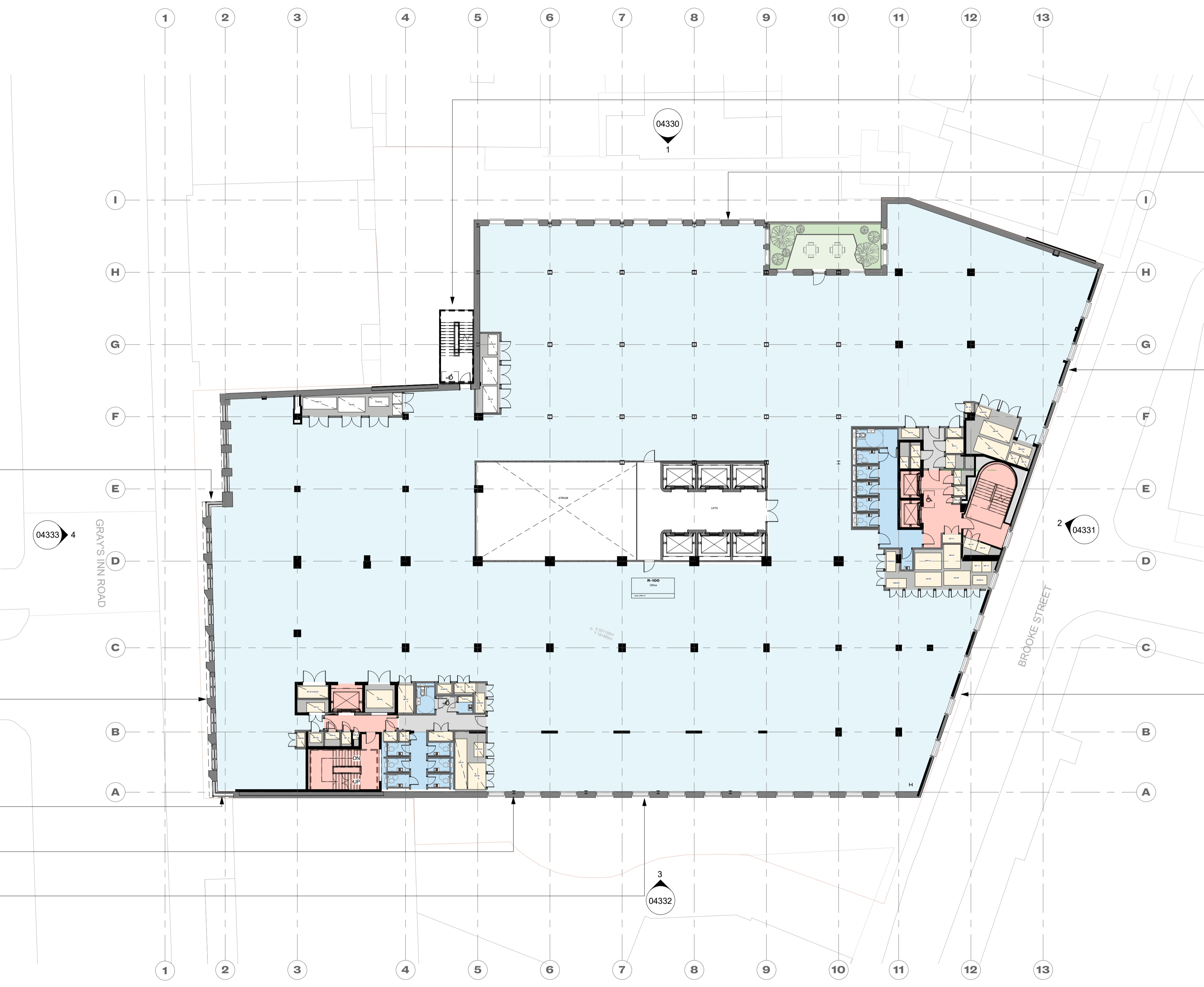
New hybrid CLT / steel extension

New light weight metal fire escape stair

Dark brown bricks to match adjacent residential buildings

Red brick

Red brick



© Buckley Gray Yeoman Ltd.
 All dimensions to be checked on site prior to commencement of any works, and/or preparation of any shop drawings. Sizes of and dimensions to any structural elements are indicative only. See structural engineers drawings for actual sizes/dimensions. Sizes of and dimensions to any service elements are indicative only. See service engineers drawings for actual sizes and dimensions.
 This drawing to be read in conjunction with all other Architect's drawings, specifications and other Consultants' information. All proprietary systems shown on this drawing are to be installed strictly in accordance with the Manufacturers/Suppliers recommended details.
 Any discrepancies between information shown on this drawing and any other contract information or manufacturers/suppliers recommendations is to be brought to the attention of the Architect.
 DO NOT SCALE FROM THIS DRAWING.

GENERAL NOTES:

1. These drawings are for costing and information only and are **NOT** to be used for tender or construction.
2. These architectural drawings have been based off Point2 Surveyors pre-strip out 2D survey drawings issued on November 2022 and therefore, may not include various areas not fully surveyed or building anomalies which could alter the scope and information of these drawings.

A	31.10.23	Issue for Planning
REV	DATE	NOTE

CLIENT Clare Real Estate (14 Gray's Inn Road) Ltd	
PROJECT Fox Court	DRAWING Planning - Proposed Plan - Level 01
DWG No. 1195-BGY-XXX-101L-DR-A-04301	REVISION A

STATUS PLANNING		
APPROVED BY TB	SUITABILITY S4	
SCALE 1 : 200 @A1	DATE 31.10.23	

BGY
 BUCKLEY GRAY YEOMAN
 + 44 20 7033 9913
 BGY.CO.UK