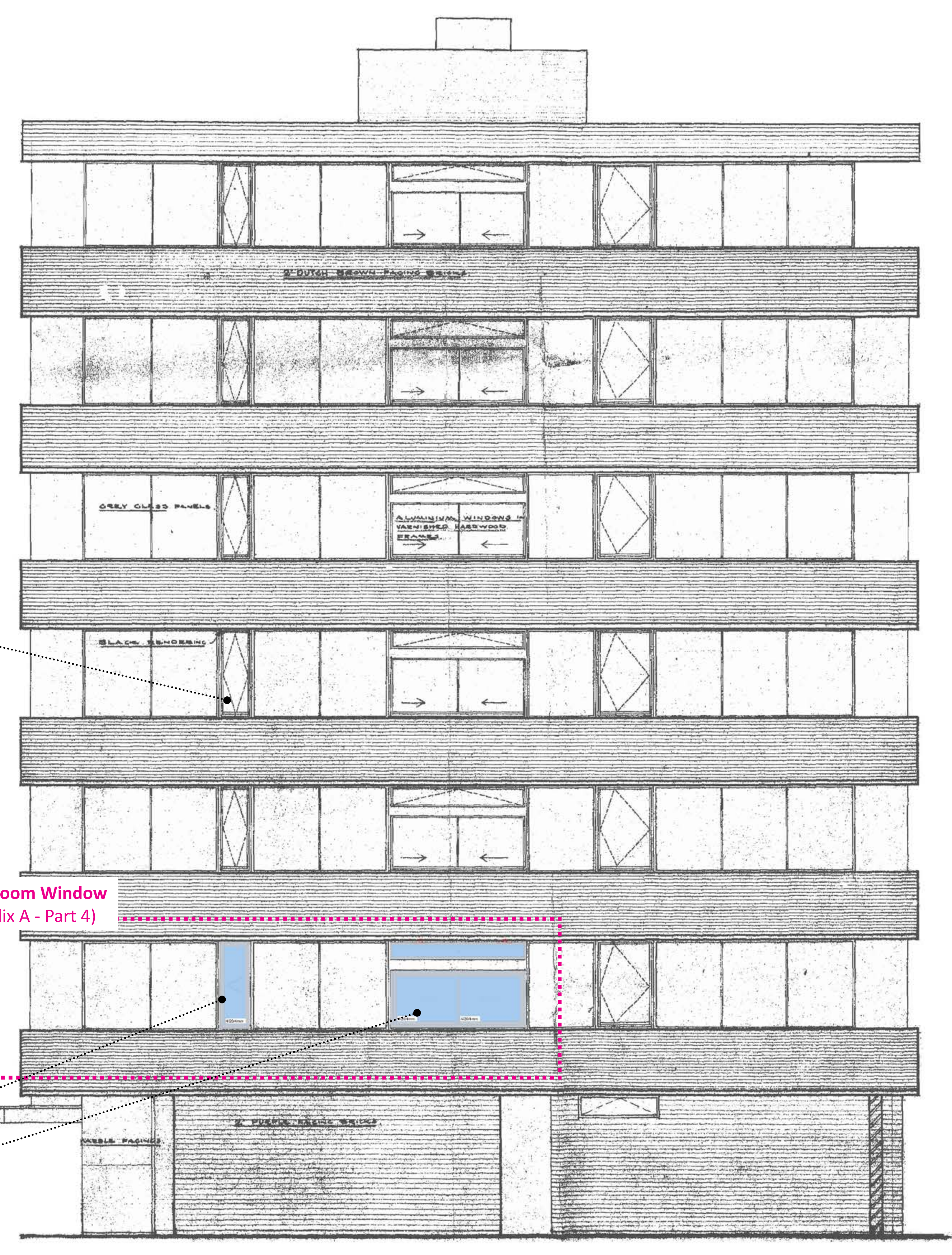




West Elevation

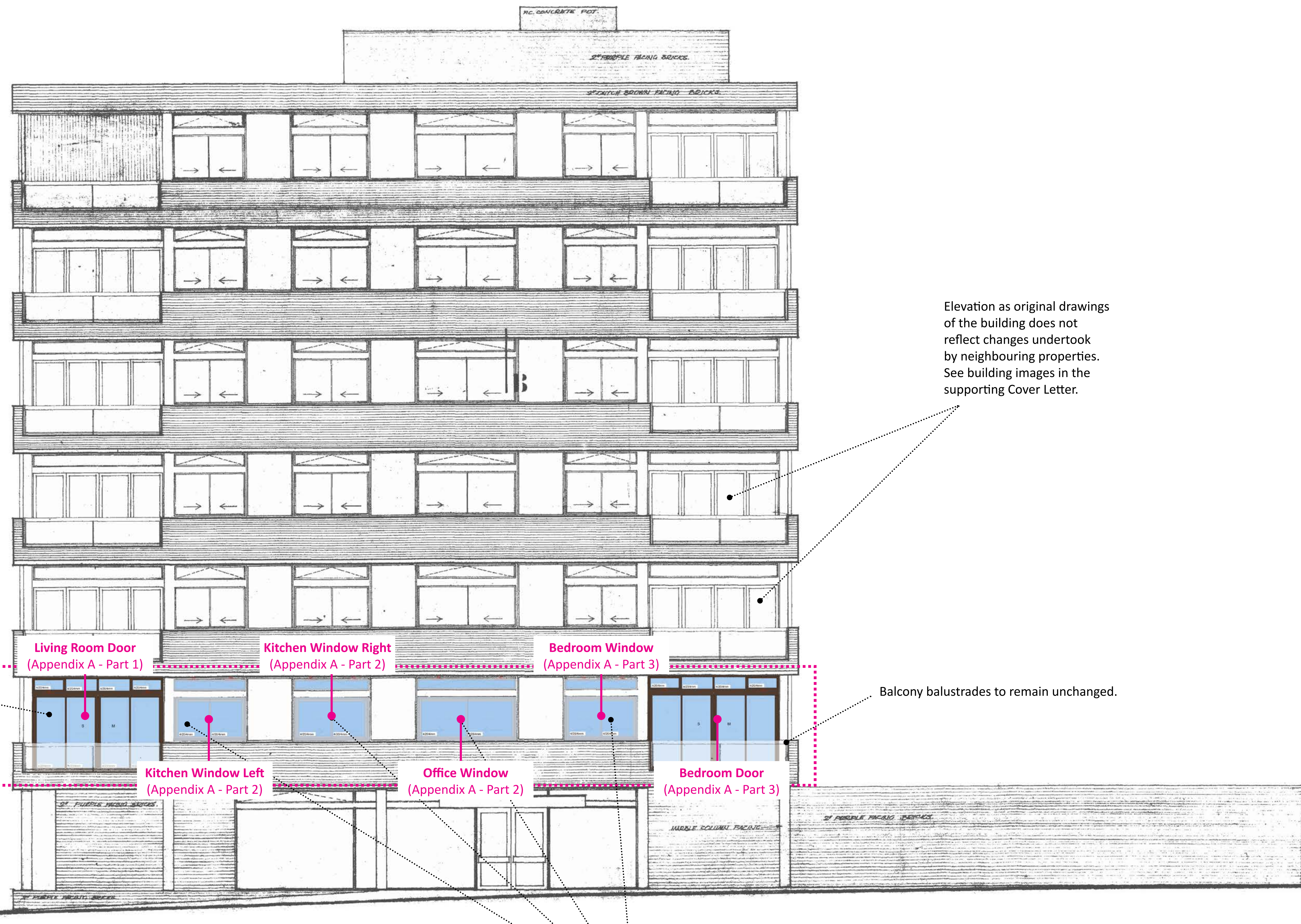
New windows to maintain same design, finish, and colour as original windows. Beam between upper and lower frames to remain in place. Windows profile slightly wider due to availability of suppliers - but in lines with alterations undertaken by neighbouring properties for facade consistency.

Elevation as original drawings of the building does not reflect changes undertaken by neighbouring properties. See building images in the supporting Cover Letter.



East Elevation

Project	Flat 11 Oak Hill Lodge	Job Ref.	23_11 OHL	Drawn by	MP
Scale	1:50 @ A0	Checked by	ES		
Drawing Title	West and East Elevations - Proposed	Drawing no.	D103	Date	09.12.23
		Rev.	01		

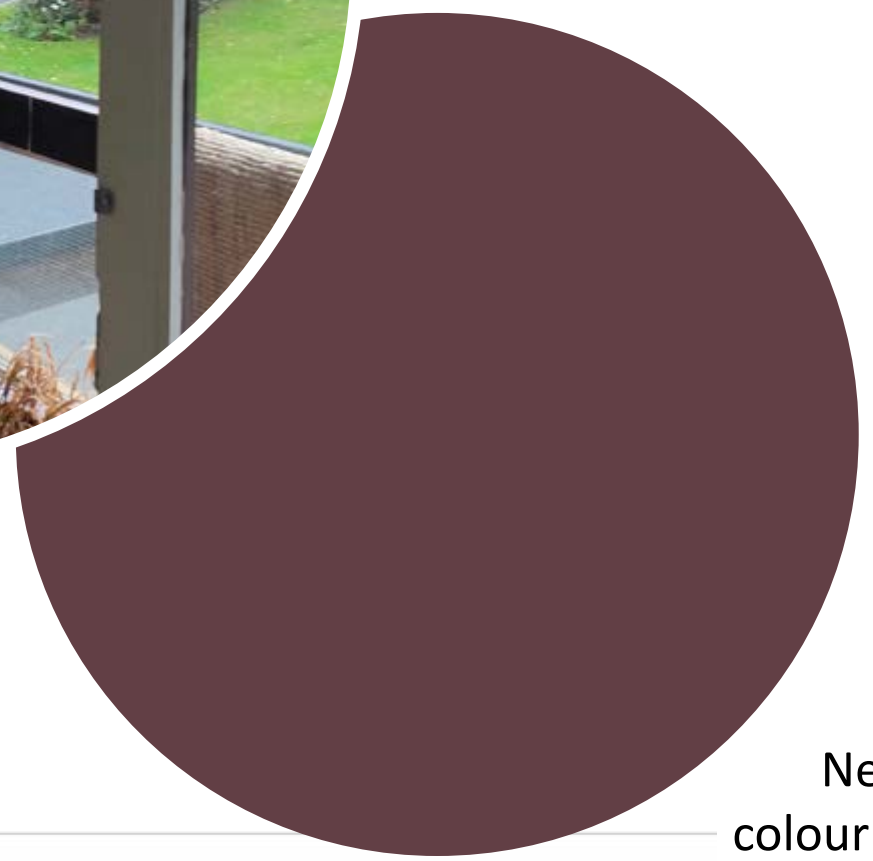
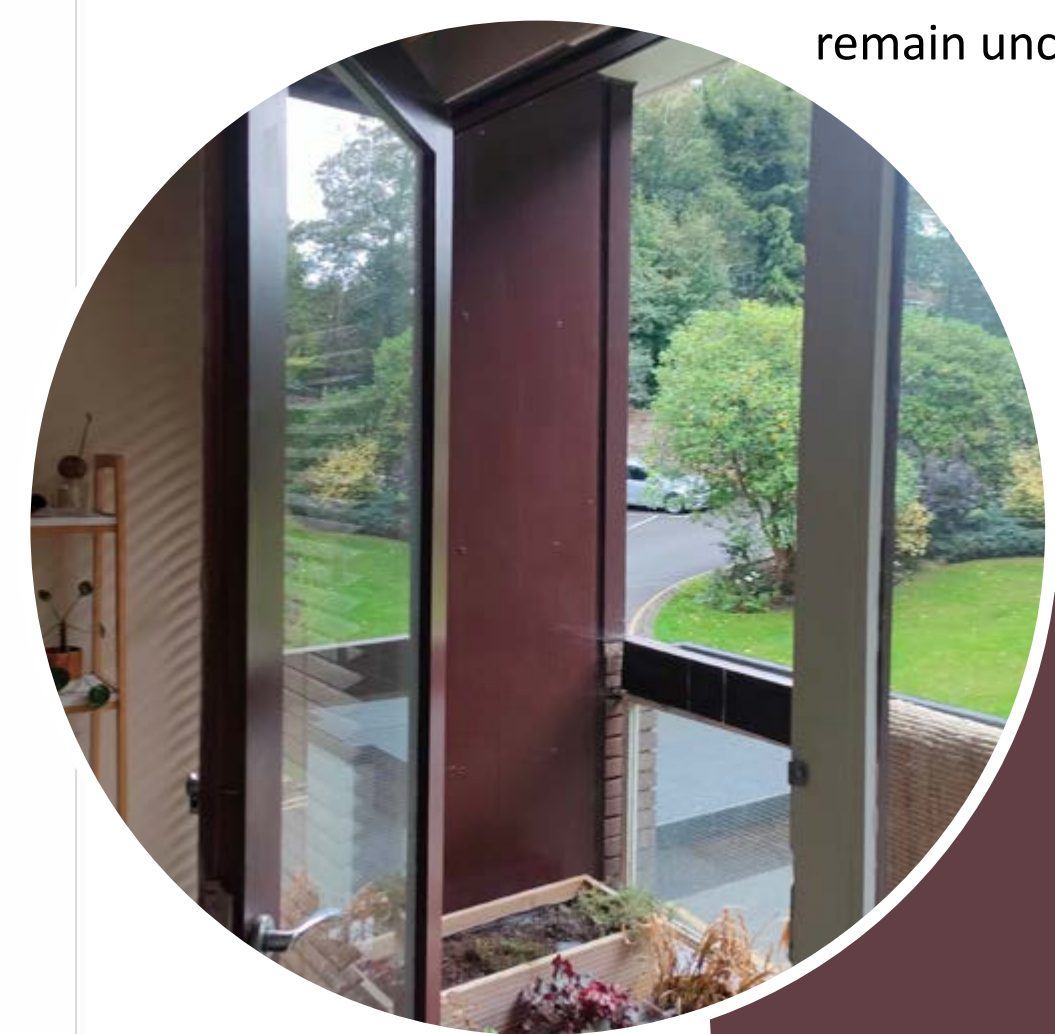


Elevation as original drawings of the building does not reflect changes undertaken by neighbouring properties. See building images in the supporting Cover Letter.

Wooden balcony doors replaced by aluminium frames, consistent with changes undertaken by neighbours (see Cover Letter). Aluminium frames to offer better insulation, acoustic performance and safety. Design to remain the same with division into 4 panels. Colour to remain the same as building elevation (see below). Beam between lower panels and upper window incorporated into window design.

Balcony balustrades to remain unchanged.

Existing colour and finish of building's facade. External panels and balustrade to remain unchanged.



New aluminium doors to match facade colour (RAL 8011 Nut Brown Matt sample)

New windows to maintain same design, finish, and colour as original windows. Beam between upper and lower frames to remain in place. Windows profile slightly wider due to availability of suppliers - but in lines with alterations undertaken by neighbouring properties for facade consistency.

South Elevation

Project	Job Ref.	23_11 OHL	Drawn by	MP
Flat 11 Oak Hill Lodge	Scale	1:50 @ A0	Checked by	ES
Drawing Title	Drawing no.	D104	Date	09.12.23
South Elevation - Proposed	Rev.			01