

# Supporting Technical Information for

**CTiL**

**CSR 95827**

## Summary:

VMO2 requires site 95827 to replace NTQ site 44398 to provide replacement coverage and capacity to this busy commercial area north of Kings Cross.

**Date Prepared:** 16/10/2023

# KEY TO COVERAGE PLOTS

The enclosed radio propagation plots are based on Ordnance Survey geographical information.

The level of coverage provided by a particular site is dependant on a number of variables. The main factors which determine the extent of coverage are: the frequency of the signal emitted, the height of the antenna above ground level, the characteristics of the surrounding topography and the type and occurrence of ground clutter such as buildings and trees which can cause 'shadows' or reflections and can absorb the signal.

The Radio Planners have produced accurate visual representations of the level of coverage available in this particular area by using advanced computer modelling software based on a Geographical Information System. The programme takes the numerous variables as above into account and can then calculate and plot the strength of the signal.

Existing and proposed sites are indicated by a blue or red circle and dot with the site number. The orientation of the antennas is shown by the arrows.

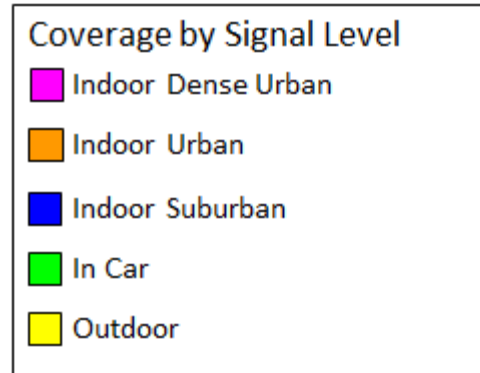
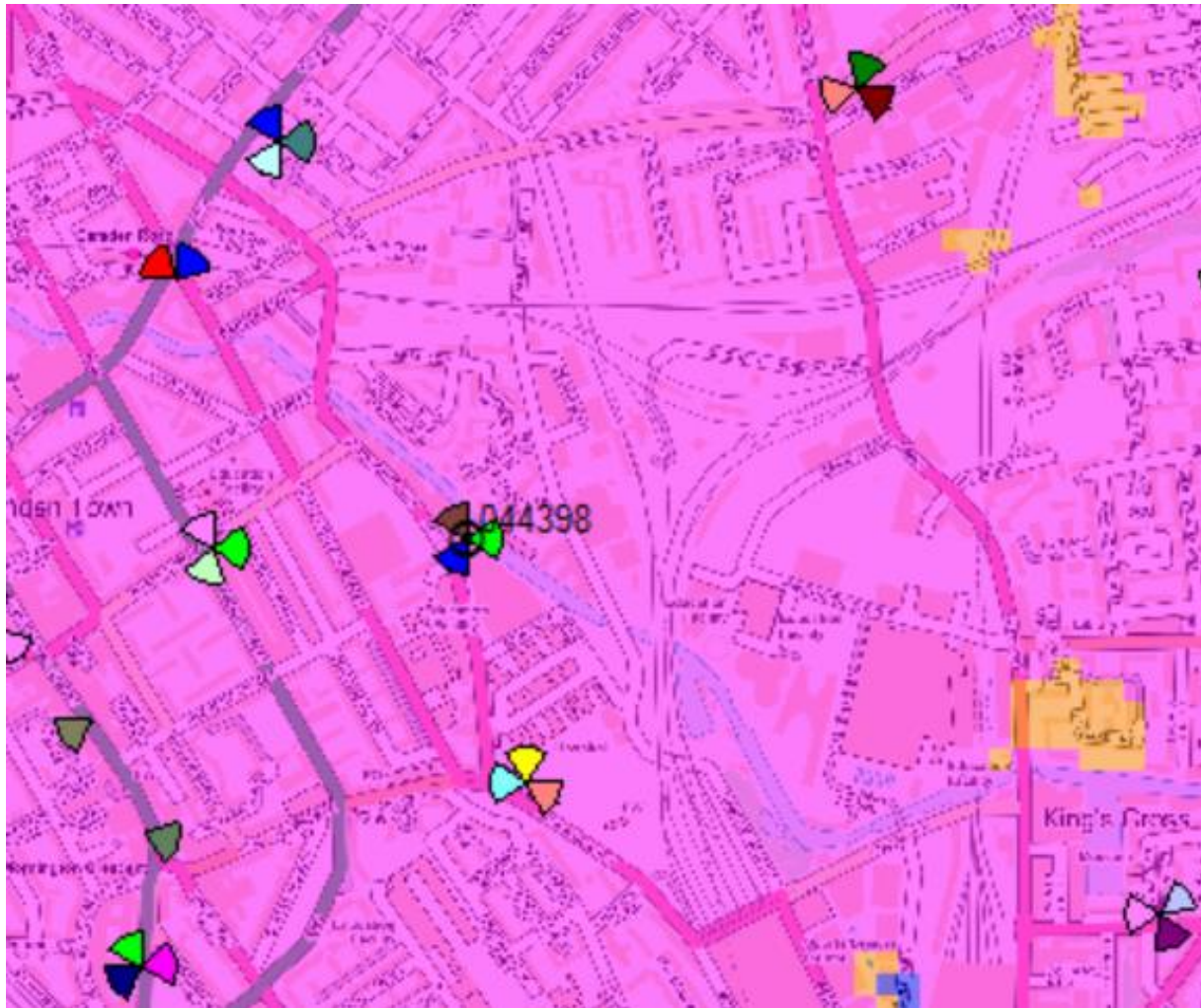


Site arrows show orientation of antennas

Note on large rooftop sites the antenna can be distributed in different locations from the site location. This is represented by a line extending outwards from the site to the antenna.

Pink	Sufficient signal strength to provide adequate service for Indoor use of a hand portable mobile in urban areas.	Indoor Dense Urban
Orange	Sufficient signal strength to provide adequate service for Indoor use of a hand portable mobile in suburban areas	Indoor Urban
Blue	Sufficient signal strength to provide adequate service for Indoor use of a hand portable mobile in suburban areas	Indoor Suburban
Green	Sufficient signal strength to provide adequate service for use of a hand portable mobile in a car	In Car
Yellow	Sufficient signal strength to provide adequate service for outdoor use of a hand portable mobile.	Outdoor
No Colour	Insufficient signal strength to provide reliable service.	No Coverage

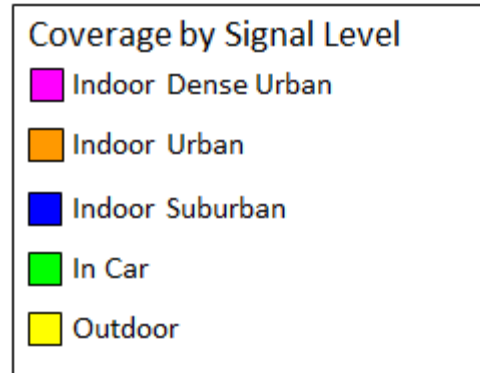
# CTiL – Existing Telefonica Coverage



Digital Mapping Solutions from Dotted Eyes. © Crown Copyright 2008. All rights reserved. Licence number 100019918

This coverage plan must be read in conjunction with the key and site specific supplementary information. Each colour block represents 50 metres square.

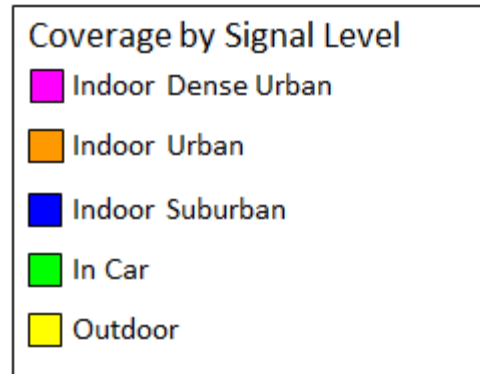
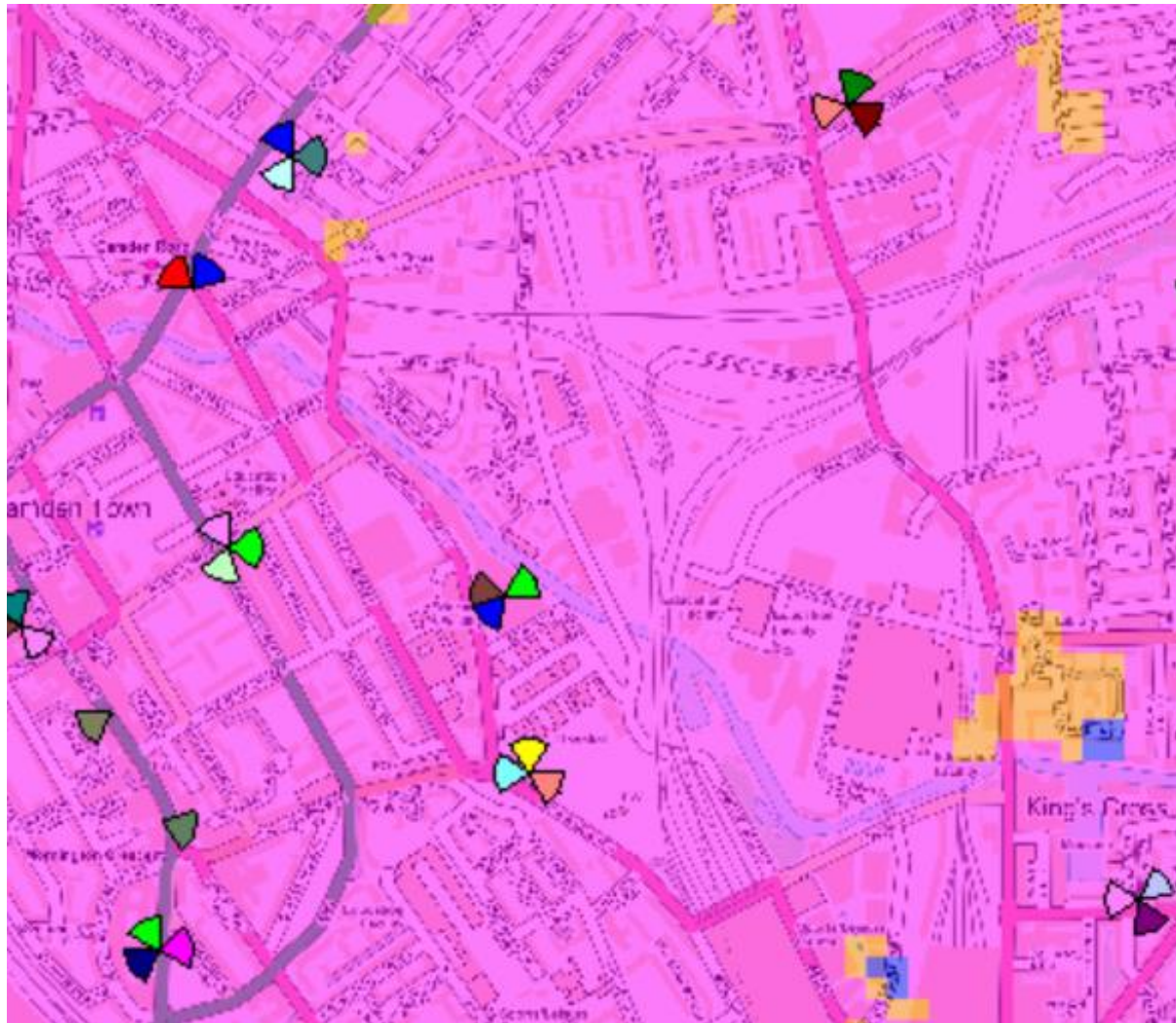
# CTiL – Telefonica Coverage without 44398



Digital Mapping Solutions from Dotted Eyes. © Crown Copyright 2006.  
All rights reserved. Licence number 100019918

This coverage plan must be read in conjunction with the key and site specific supplementary information. Each colour block represents 50 metres square.

# CTiL – Telefonica Coverage with replacement site 95827



Digital Mapping Solutions from Dotted Eyes. © Crown Copyright 2006.  
All rights reserved. Licence number 100019918

This coverage plan must be read in conjunction with the key and site specific supplementary information. Each colour block represents 50 metres square.