

NOTES:

PROPOSED VF 5No. ERS UNITS TO BE INSTALLED ON OFFSET BRACKETS WITH SUPPORT POLE FIXED TO MAIN POLE ON SCREEN STEELWORK

PROPOSED VF 1No. ANTENNA TO BE INSTALLED ON MAIN POLE FIXED TO SCREEN STEELWORK

PROPOSED VF 1No. ANTENNA TO BE INSTALLED ON OFFSET BRACKETS WITH SUPPORT POLE FIXED TO MAIN POLE ON SCREEN STEELWORK

PROPOSED VMO2 1No. ANTENNA TO BE INSTALLED ON MAIN POLE FIXED TO SCREEN STEELWORK

PROPOSED VMO2 1No. ANTENNA TO BE INSTALLED ON OFFSET BRACKETS WITH SUPPORT POLE FIXED TO MAIN POLE ON SCREEN STEELWORK

TOP OF PROPOSED VF/VMO2 ANTENNAS +36.00m AGL

U/S OF PROPOSED VMO2 ANTENNAS +35.27m AGL

U/S OF PROPOSED VF ANTENNAS +35.18m AGL

U/S OF PROPOSED VF/VMO2 ANTENNAS +33.80m AGL

EXISTING ROOF LEVEL +21.00m AGL

PROPOSED VMO2 1No. Ø300 DISH TO BE INSTALLED ON OFFSET BRACKETS WITH SUPPORT POLE FIXED TO MAIN POLE ON SCREEN STEELWORK

PROPOSED VMO2 5No. RRU UNITS TO BE INSTALLED ON OFFSET BRACKETS WITH SUPPORT POLE FIXED TO MAIN POLE ON SCREEN STEELWORK

PROPOSED VF 5No. ERS UNITS TO BE INSTALLED ON OFFSET BRACKETS WITH SUPPORT POLE FIXED TO MAIN POLE ON SCREEN STEELWORK

PROPOSED VF 1No. ANTENNA TO BE INSTALLED ON OFFSET BRACKETS WITH SUPPORT POLE FIXED TO MAIN POLE ON SCREEN STEELWORK

PROPOSED VF 1No. ANTENNA TO BE INSTALLED ON MAIN POLE FIXED TO SCREEN STEELWORK

PROPOSED VF/VMO2 DISHES LEVEL +34.00m AGL

EXISTING SCREEN LEVEL +33.15m AGL

EXISTING PARAPET LEVEL +30.80m AGL

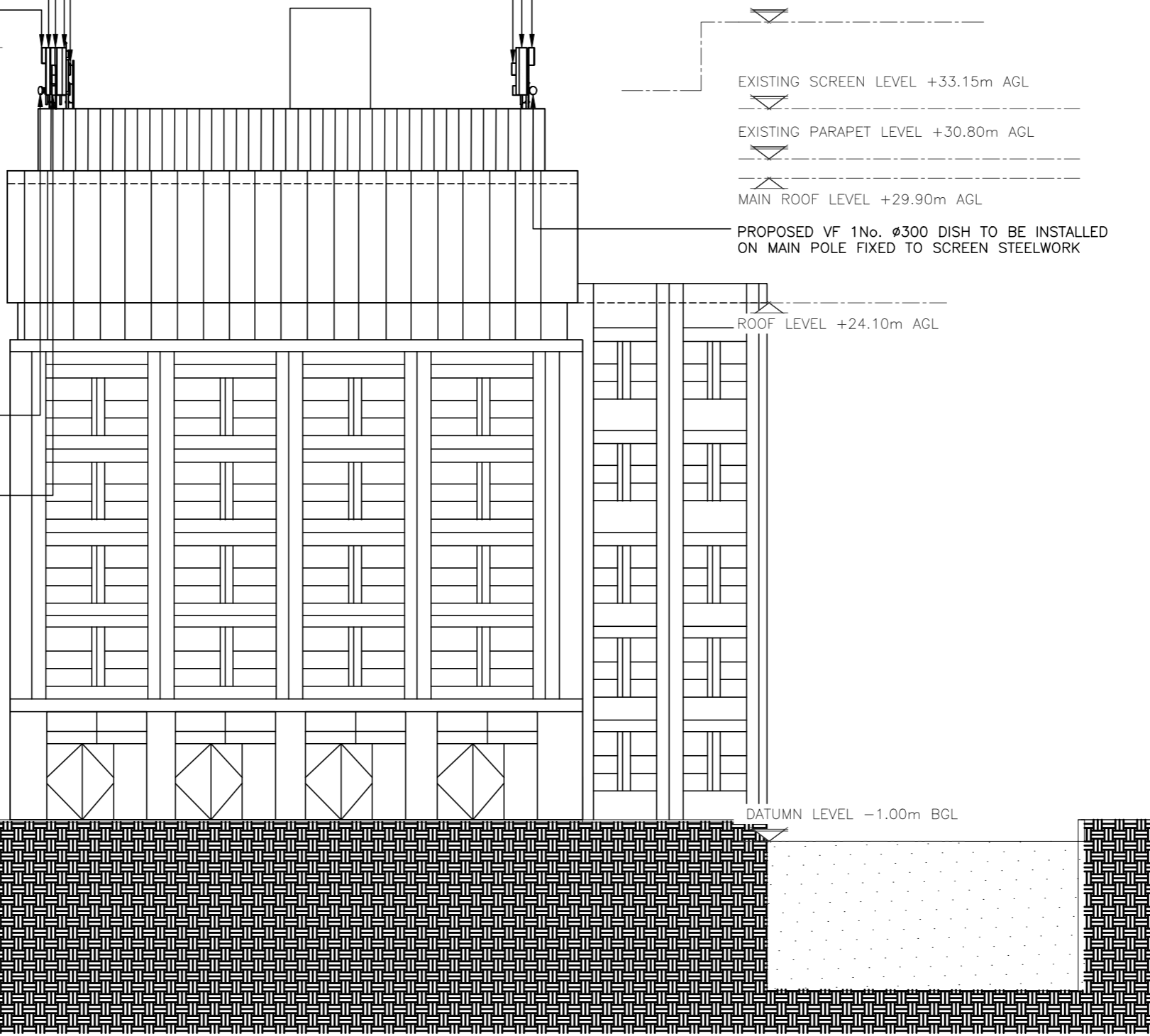
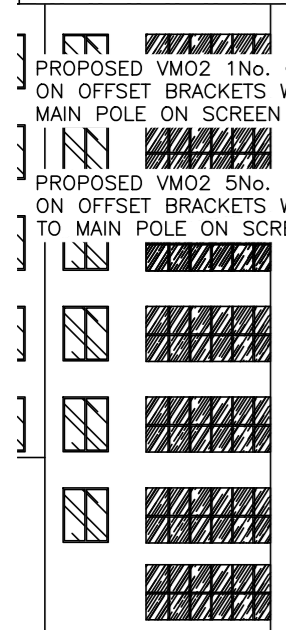
MAIN ROOF LEVEL +29.90m AGL

PROPOSED VF 1No. Ø300 DISH TO BE INSTALLED ON MAIN POLE FIXED TO SCREEN STEELWORK

ROOF LEVEL +24.10m AGL

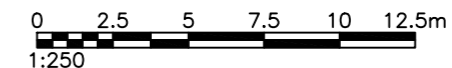
DATUM LEVEL -1.00m BGL

G.L.



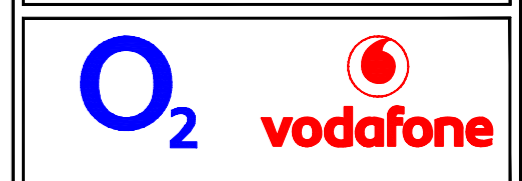
PROPOSED SOUTH EAST ELEVATION

(1:250)



These drawings comply with VF & VMO2 Standard ICNIRP guidelines, under configuration VM7F  
Designed in accordance with Cornerstone documents: SDN0007 & SDN0009 v6.0

A	Issued for Approval	ASE	FD	27.11.23
REV	MODIFICATION	BY	CH	DATE



Cell Name	Opt.
TRIBECA - THE APEX	A

Cell ID No		
CORNERSTONE	VF	VMO2
305482_00	20207	95827

Site Address / Contact Details	
2-6 ST PANCRAS WAY CAMDEN NW1 0TB	

Drawing Title: PROPOSED SOUTH EAST ELEVATION

Purpose of issue:	PLANNING	Dwg Rev:
Drawing Number:	303	A

Surveyed By:	Original Sheet Size:	Pack Issue:
FD	A3	

Drawn:	Date:	Checked:	Date:	
ASE	27.11.23	FD	27.11.23	D